

## Summary of the Student Accommodation and Program Plan

### Overview:

- Change the grades of the local secondary school from 10-12 to 9-12 to allow students to benefit from a 4-year secondary experience
- Change the grades of the feeder intermediate schools from 7-9 to 6-8 to utilize available space, to address enrolment pressures at several junior feeder schools, and to establish a feeder system that has consistent grade ranges and common entry and graduation points
- Change the grades of the feeder junior schools from JK-6 to JK-5 to address enrolment pressures and to establish a feeder system that has consistent grade ranges and common entry and graduation points
- Change an anomalous shared attendance area (which has two designated home schools at the junior and intermediate levels) to match the system standard of a single home school for each residential address
- Change the location of the Autism program to address an enrolment pressure and utilize available space
- Change the Gifted Program locations and pathways to address enrolment pressures and utilize available space
- Change the French Program locations and pathways to address enrolment pressures and utilize available space

### Details for each school:

#### AY Jackson SS

##### 2016-17:

- Change the grades of the Regular Program from 10-12 to 9-12 – receive the Grade 9 students from Zion Heights JHS and Highland JHS
- Introduce a new Gifted Program and receive Grade 9 students based on the Gifted Boundaries – receive Grade 10 students graduating from the Zion Heights JHS Gifted program based on the Gifted Boundaries – Gifted Program serves Grades 9-10 for this school year
- Remove the two portables and fit-up two rooms in the building to receive the Music classes from the portables

##### 2017-18:

- Continue the Regular Program as Grades 9-12
- Expand the Gifted Program to Grades 9-11

##### 2018-19 (full implementation):

- Continue the Regular Program as Grades 9-12
- Expand the Gifted Program to Grades 9-12

#### Highland JHS

##### 2016-17:

- Change the grades of the Regular Program from 7-9 to 6-8 – send Grade 9 students to AY Jackson SS and receive Grade 6 students from Arbor Glen PS, Cliffwood PS, Cresthaven PS and Hillmount PS

- Introduce a new Extended French Program and receive Grade 6 and 7 students from Cliffwood PS – Extended French Program serves Grades 6-7 for this school year
- Change the name of the school to Highland Middle School to reflect the new grade range

2017-18:

- Continue the Regular Program as Grades 6-8
- Expand the Extended French Program to Grades 6-8 (program will feed into Newtonbrook SS)

2018-19 (full implementation):

- Continue the Regular Program as Grades 6-8
- Continue the Extended French Program as Grades 6-8 – receive Grade 6 students from a new feeder, Cresthaven PS

### **Zion Heights JHS**

2016-17:

- Change the grades of the Regular Program from 7-9 to 6-8 – send Grade 9 students to AY Jackson SS and receive Grade 6 students from Cresthaven PS, Pineway PS and Steelesview PS
- Change the grades of the Gifted Program from 7-9 to 6-8 – send Grade 9 students to AY Jackson SS based on Gifted boundaries – receive Grade 6 students from Hillmount PS and Lillian PS where the Gifted Programs are being phased out
- Change the name of the school to Zion Heights Middle School to reflect the new grade range
- Eliminate the shared Cummer Valley MS / Zion Heights MS attendance area by assigning the area to Zion Heights MS with grandparenting of existing students and their siblings (allow students attending Cummer Valley MS at the end of 2015-16 and their younger siblings to attend the school until graduation) – see attached map

2017-18:

- Continue the Regular Program as Grades 6-8
- Continue the Gifted Program as Grades 6-8 – receive Grade 6 students from Hillmount PS and Lillian PS where the Gifted Programs are being phased out – receive Grade 6 students from Lescon PS and Seneca Hill PS where the Gifted Programs will continue (grade changes of Lescon PS and Seneca Hill PS were addressed in concurrent PARTs)

2018-19 (full implementation):

- Continue the Regular Program as Grades 6-8
- Continue the Gifted Program as Grades 6-8 – receive Grade 6 students from a new feeder, Steelesview PS, as well as Lescon PS and Seneca Hill PS

### **Arbor Glen PS**

2016-17 (full implementation):

- Change the grades of the Regular Program from JK-6 to JK-5 – send Grade 6 students to Highland MS

### **Cliffwood PS**

2016-17:

- Change the grades of the Regular Program from JK-6 to JK-5 – send Grade 6 students to Highland MS
- Relocate the Extended French Program to Cresthaven PS by phasing it out – direct new Grade 4 students to Cresthaven PS and send Grade 6 students to Highland MS – Extended French Program serves Grade 5 for this school year
- Continue the French Immersion Program as SK-6

2017-18 (full implementation):

- Continue the Regular Program as JK-5
- Change the grades of the French Immersion Program from SK-6 to SK-5 – send Grade 6 students to Don Valley MS (this change is made this school year to coincide with similar grade changes of the French Immersion Programs at Brian PS and Dallington PS that were addressed in concurrent PARTs which will also impact Don Valley MS)

### **Cresthaven PS**

2016-17:

- Change the grades of the Regular Program from JK-6 to JK-5 – send Grade 6 students to Zion Heights MS or Highland MS depending on home address
- Receive the Extended French Program from Cliffwood PS by phasing it in – Extended French Program serves Grade 4 for this school year

2017-18 (full implementation):

- Continue the Regular Program as JK-5
- Expand the Extended French Program to Grades 4-5
- Receive the Middle French Immersion Program from Hollywood PS by phasing it in – Middle French Immersion Program serves Grade 4 for this school year (in 2016-17, the French Department will review converting the Middle French Immersion Program to an Extended French Program and will contact affected parents upon concluding the review)

### **Cummer Valley MS**

2016-17:

- Continue the Regular Program as Grades 6-8
- Relocate the Gifted Program to Zion Heights MS by phasing it out – Gifted Program serves Grades 7 and 8 for this school year
- Eliminate the shared Cummer Valley MS / Zion Heights MS attendance area by assigning the area to Zion Heights MS with grandparenting of existing students and their siblings (allow students attending Cummer Valley MS at the end of 2015-16 and their younger siblings to attend the school until graduation) – see attached map

2017-18:

- Continue the Regular Program as Grades 6-8
- Continue phasing out the Gifted Program – Gifted Program serves Grade 8 for this school year

2018-19 (full implementation):

- Continue the Regular Program as Grades 6-8

### **Finch PS**

2016-17 (full implementation):

- Continue the Regular Program as JK-5
- Relocate all or part of the Autism Program to Pineway PS as decided by the Special Education Department based on their annual review of program needs
- Eliminate the shared Finch PS / Steelesview PS attendance area by assigning the area to Steelesview PS with grandparenting of existing students and their siblings (allow students attending Finch PS at the end of 2015-16, and their younger siblings to attend the school until graduation) – see attached map

### **Hillmount PS**

2016-17:

- Change the grades of the Regular Program from JK-6 to JK-5 – send Grade 6 students to Highland MS
- Relocate the Gifted Program to Steelesview PS by phasing it out – direct new Grade 4 students to Steelesview PS and send Grade 6 students to Zion Heights MS – Gifted Program serves Grade 5 for this school year

2017-18 (full implementation):

- Continue the Regular Program as JK-5

### **Hollywood PS**

2016-17:

- Continue the Regular Program as JK-5
- Continue the Middle French Immersion Program as 4-6
- The French Department will review converting the Middle French Immersion Program to an Extended French Program and will contact affected parents upon concluding the review

2017-18:

- Continue the Regular Program as JK-5
- Relocate the Middle French Immersion Program to Cresthaven PS by phasing it out – direct new Grade 4 students to Cresthaven PS – Middle French Immersion serves Grades 5-6 for this school year (in 2016-17, the French Department will review converting the Mid-Immersion Program to an Extended French Program and will contact affected parents upon concluding the review)

2018-19:

- Continue the Regular Program as JK-5
- Continue phasing out the Middle French Immersion Program – Middle French Immersion serves Grade 6 for this school year

2019-20 (full implementation):

- Continue the Regular Program as JK-5

**Lillian PS**

2016-17:

- Continue the Regular Program as JK-5
- Relocate the Gifted Program to Steelesview PS by phasing it out – direct new Grade 4 students to Steelesview PS and send graduates to Zion Heights MS until the program is fully phased out – Gifted Program serves Grade 5 for this school year

2017-18 (full implementation):

- Continue the Regular Program as JK-5

**Pineway PS**

2016-17 (full Implementation):

- Change the grades of the Regular Program from JK-6 to JK-5 – send Grade 6 students to Zion Heights MS
- Receive all or part of the Autism Program from Finch PS as decided by the Special Education Department based on their annual review of program needs

**Steelesview PS**

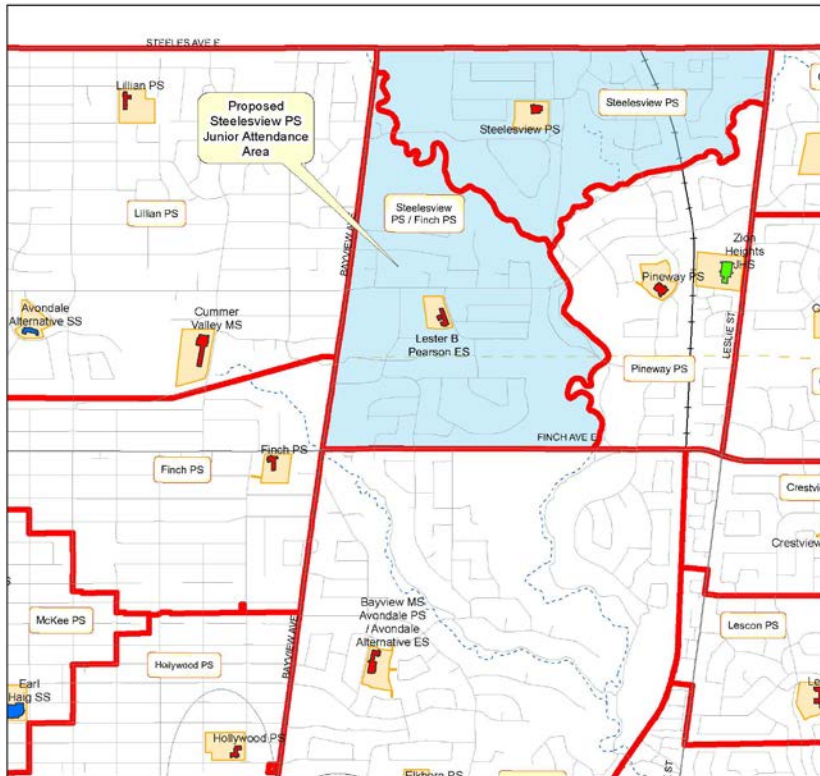
2016-17:

- Change the grades of the Regular Program from JK-6 to JK-5 – send Grade 6 students to Zion Heights MS
- Receive the Gifted Program from Hillmount PS and Lillian PS by phasing it in – Gifted Program serves Grade 4 for this school year
- Eliminate the shared Finch PS / Steelesview PS attendance area by assigning the area to Steelesview PS with grandparenting of existing students and their siblings (allow students attending Finch PS at the end of 2015-16 and their younger siblings to attend the school until graduation) – see attached map

2017-18 (full implementation):

- Continue the Regular Program as JK-5
- Expand the Gifted Program to Grades 4-5

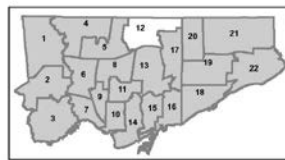
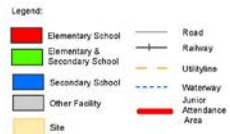
## Changes to Junior Attendance Areas



Please note:  
The lines on this map representing the Attendance Areas are approximate.  
For specific information on designated schools to serve individual addresses, please consult the TDCSB Street Guide.

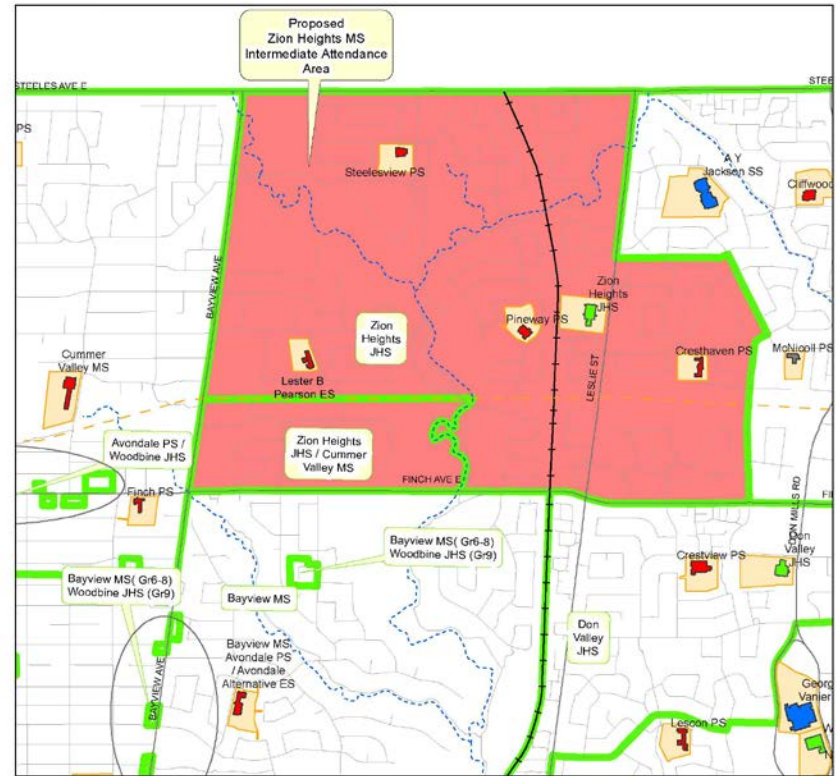
0 0.15 0.3 0.6 0.9 1.2 km

Produced by:  
Planning Division, TDCSB  
November, 2015  
Source:  
Base Map: Geospatial Competency Centre  
Facility - Planning Division, TDCSB  
Data: City of Toronto



F:\GIS\MPT\Proposed Junior.mxd

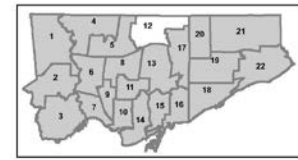
## Changes to Intermediate Attendance Areas



Please note:  
The lines on this map representing the Attendance Areas are approximate.  
For specific information on designated schools to serve individual addresses, please consult the TDCSB Street Guide.

0 0.15 0.3 0.6 0.9 1.2 km

Produced by:  
Planning Division, TDCSB  
November, 2015  
Source:  
Base Map: Geospatial Competency Centre  
Facility - Planning Division, TDCSB  
Data: City of Toronto



F:\GIS\MPT\Proposed Intermediate.mxd