

In-Person Community Meeting

Pape Avenue Junior Public School Relocation to 540 Jones Avenue

April 22, 2025

6:30 – 8:00pm

This presentation is available on the TDSB public website at www.tdsb.on.ca – click on **Accommodation Reviews** on the bottom of the page – scroll down to **Other Reviews** – select **Pape Avenue JPS – Metrolinx Construction of the Ontario Line**.

Land Acknowledgement

We acknowledge we are hosted on the lands of the Mississaugas of the Anishinaabe, the Haudenosaunee Confederacy and the Wendat. We also recognize the enduring presence of all First Nations, Métis and Inuit peoples.

Welcome and Introductions

Elizabeth Addo	Executive Superintendent, Learning Centre 2
Sara Ehrhardt	Trustee, Ward 15
Anastasia Poulis	Superintendent, FOS15
Carol Shea	Principal, Pape Avenue Jr PS
Maia Puccetti	Executive Officer, Facilities and Planning
Vladimir Tarakanov	Senior Manager, Design and Renewal, LC2
Viktor Kuslikis	Manager, Design Services, LC 2
Ralf Klopff	Move Coordinator, TDSB Facilities
Daniel Castaldo	System Planning Officer (Interim)
Garry Green	Senior Manager, Community, Business and Student Transportation Services
Ellie Cameron	Manager, Student Transportation Services
Liz Hoang	Manager, Child Care Services
Leslie Murray	Early Years Coordinator, Child Care Services
Kim Fritz	Manager, EarlyON Child & Family Centres
Jennifer Kowalski	Manager, Real Estate, Toronto Lands Corporation
Zoya McGroarty	Communications Advisor

Agenda

1.	Welcome and Introductions	Elizabeth Addo, Executive Superintendent, LC2
2.	Opening Remarks	Sara Ehrhardt, Trustee, Ward 15
3.	Overview on Timelines for the Move	Maia Puccetti, Executive Officer, Facilities Services and Planning Ralf Klopff, Move Coordinator
4.	Update on the Jones Avenue Building – Renovations and Readiness	Vladimir Tarakanov, Senior Manager, Design and Renewal, LC2 Viktor Kuslikis, Manager, Design Services
5.	Update on Renovations to Pape Avenue Jr. PS	Vladimir Tarakanov, Senior Manager, Design and Renewal, LC2 Viktor Kuslikis, Manager, Design Services
6.	Planning for the Transportation of Eligible Students	Garry Green, Senior Manager, Student Transportation Services Ellie Cameron, Manager, Student Transportation Services
7.	Day to Day – Pape Avenue Jr. PS at Jones Avenue; sharing with Earl Grey Sr. PS	Carol Shea, Principal, Pape Avenue Jr. PS Anastasia Poulis, Superintendent, FOS15
8.	Update on Child Care Update on EarlyON	Liz Hoang, Manager, Child Care Services Leslie Murray, Early Years Coordinator Kim Fritz, Manager, EarlyON
9.	Closing Comments and Adjournment	Elizabeth Addo, Executive Superintendent, LC2



Overview on Timelines for the Move

**Maia Puccetti, Executive Officer,
TDSB Facilities and Planning**

Background

- On January 16, 2025, staff presented a report recommending the relocation of Pape Avenue Jr. PS to the Jones Avenue building.
- The report detailed concerns regarding the proximity, impact and duration of Metrolinx construction for the new Ontario Line.
- The recommendation to relocate Pape Avenue Jr. PS was approved by the Board on January 22, 2025.
- A digital recording of the November 28, 2024 community meeting is available on the Strategy and Planning webpage, under *Other Reviews*.
- On January 23, 2025, a survey was sent to parents/guardians/caregivers. This meeting is intended to provide further information on the topics that were identified in the survey.

Move Working Group

- To help manage the logistics of the move, a ten person “Move Working Group” committee has been established consisting of the following:
 - (2) PCH staff Reps,
 - (2) PCH parent Reps,
 - (1) School council Rep
 - (1) School teacher Rep
 - (2) School parent reps
- Principal and TDSB Move Coordinator
- The first (in person) meeting has been scheduled for Wednesday, April 23, 2025, followed by bi-weekly team meetings.
- Committee updates will be communicated in the school newsletter.

Move planning is underway now.

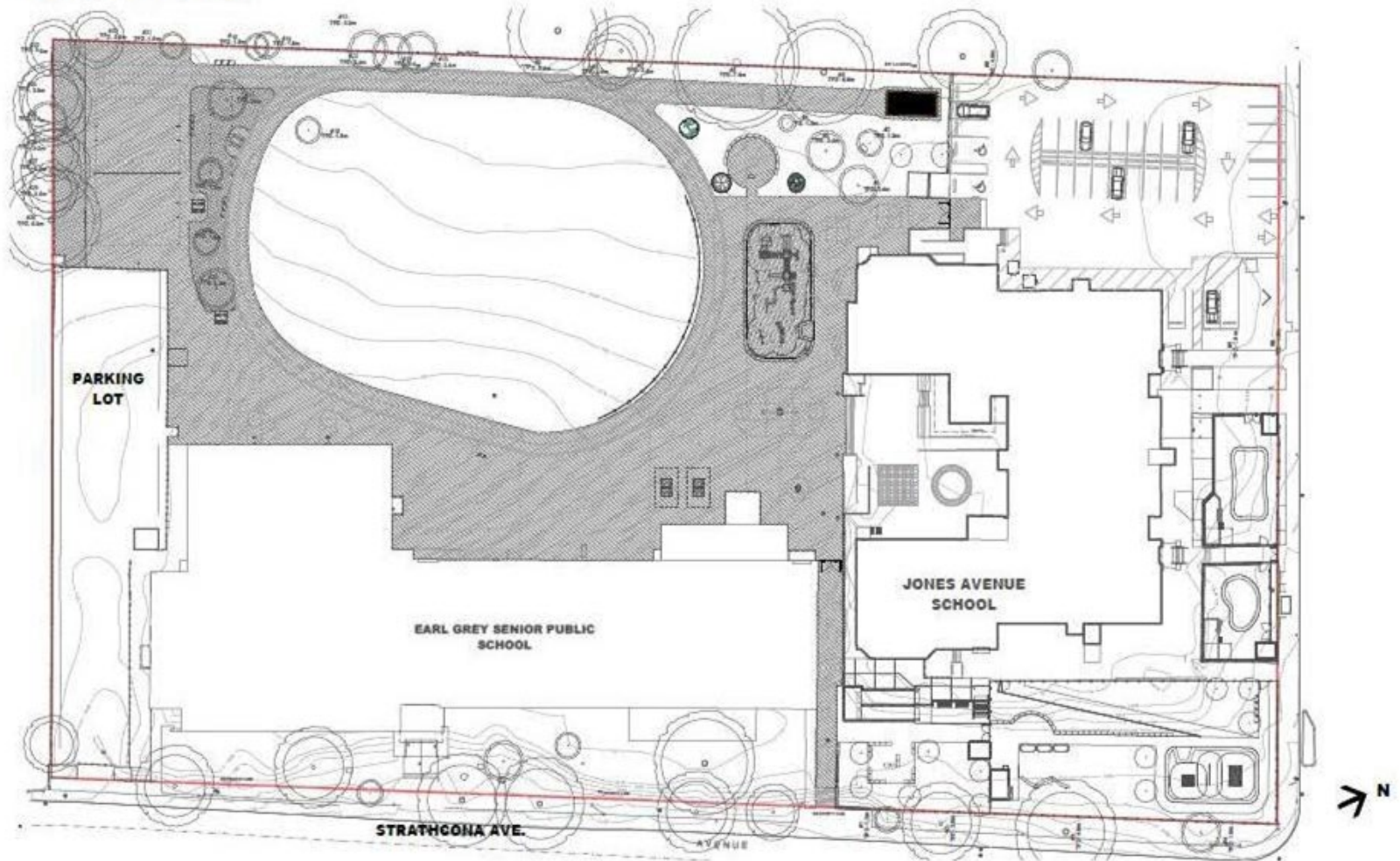
- Our Move Coordinator, Ralf Klopf, is working with Principal Shea and Glenn Sheridan, Facility Team Lead, as well as caretaking staff, to determine what materials, equipment and furniture will be moved over to the Jones Avenue building.
- The Jones building has new furniture, which means we do not need to move all the Pape furniture to Jones.
- We will provide relief staff to give teachers time to pack.
- Starting in May, boxes will be provided to start packing up materials.
- If possible, we will try to have a few Focus on Youth (FoY) students available in June to help pack materials.

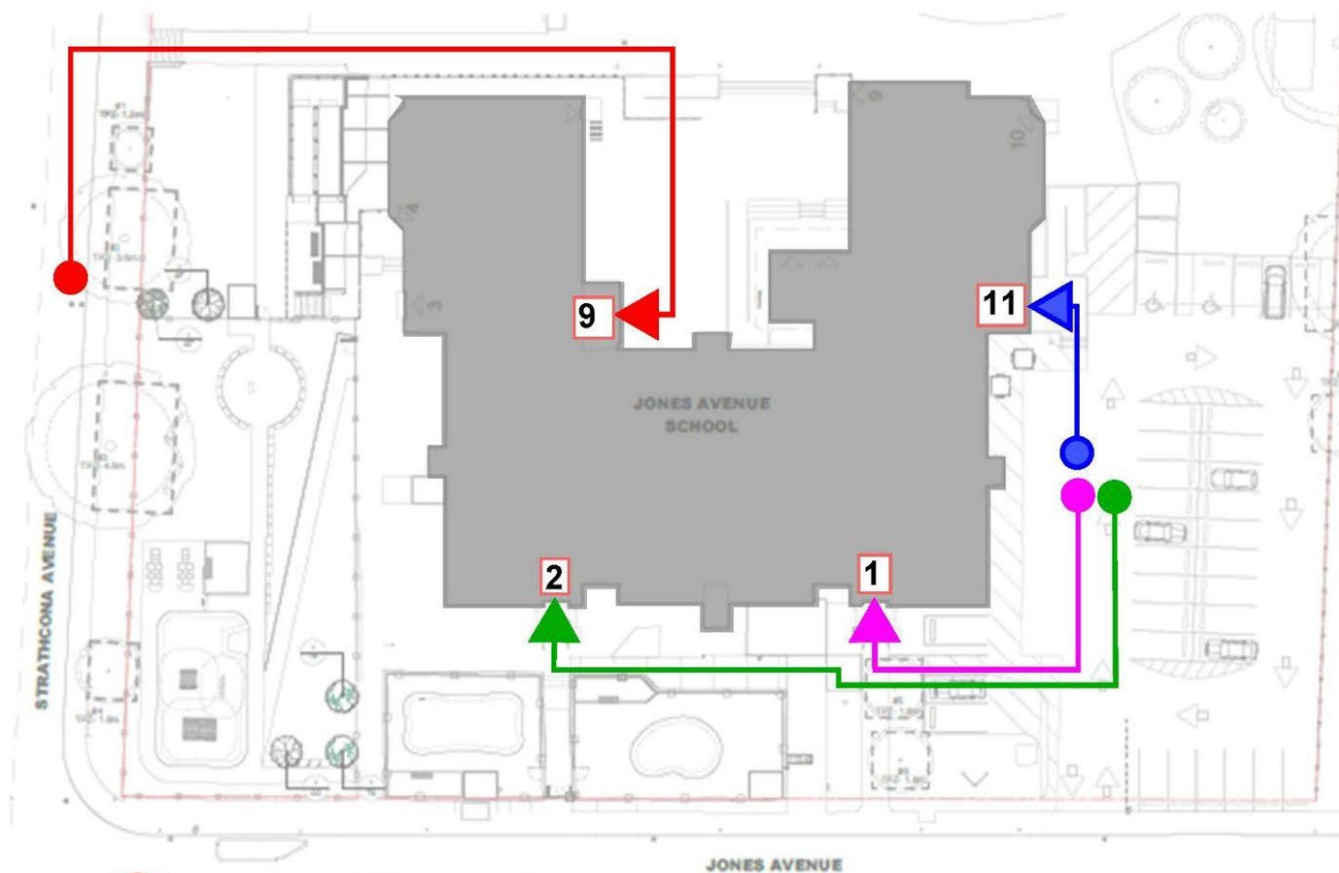
- This is a great time to encourage decluttering and to identify outdated materials and equipment that are no longer needed.
- Caretaking staff will assist to organize disposal and recycling pickups.
- The move itself will happen in July, with the movers placing the labelled boxes into each classroom.
- FoY students may be available during the summer to assist with unpacking and setting up, including with Pape Children's House (PCH).
- We are still working with PCH to determine the dates and their needs for the move to Jones. TDSB will take care of moving the PCH materials from Pape to Jones.
- The same process would take place when we are ready to move from Jones back to Pape.

Update on the Jones Avenue Building - Renovations and Readiness

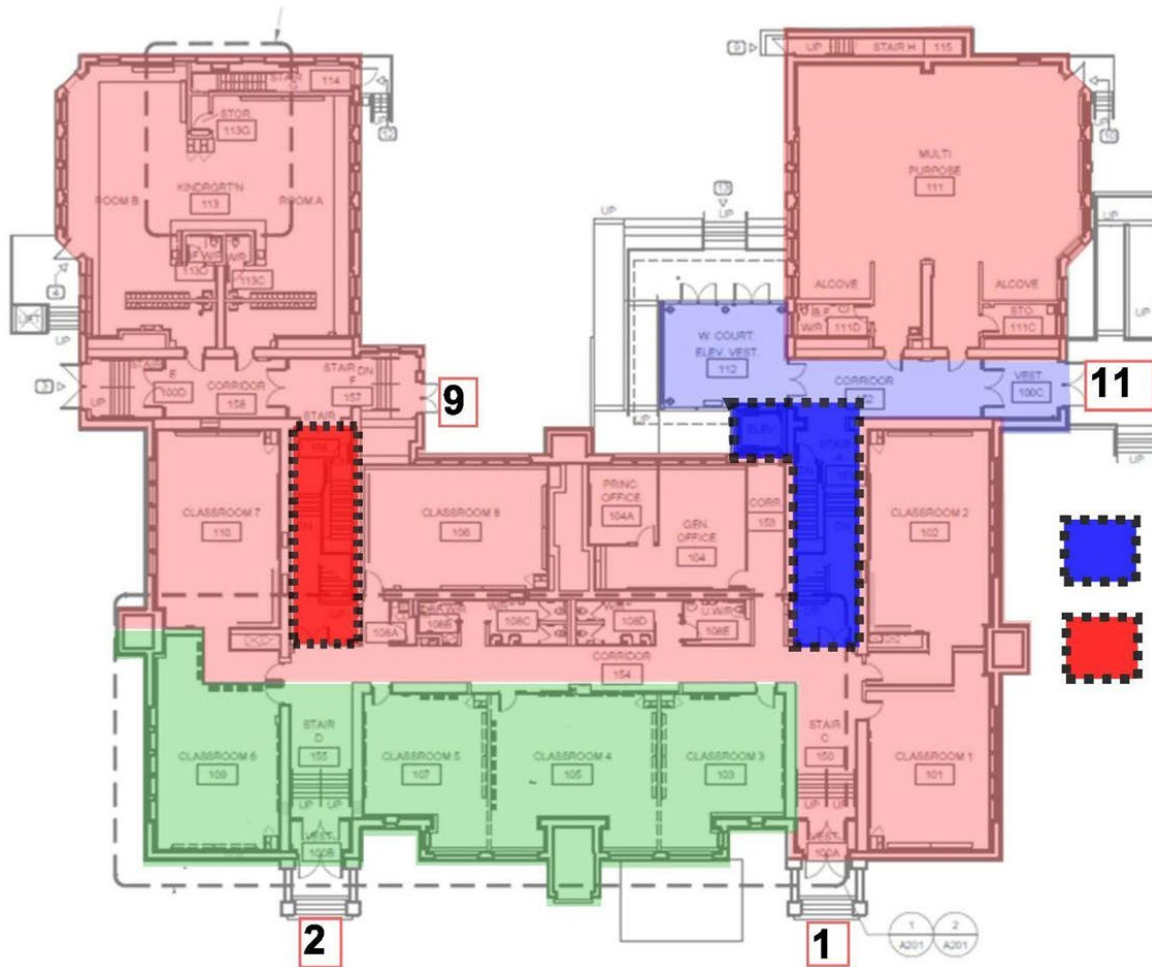
Vladimir Tarakanov, Senior Manager, Design and Renewal, LC2
Viktor Kuslikis, Manager, Design Services, LC2



KEY PLAN:

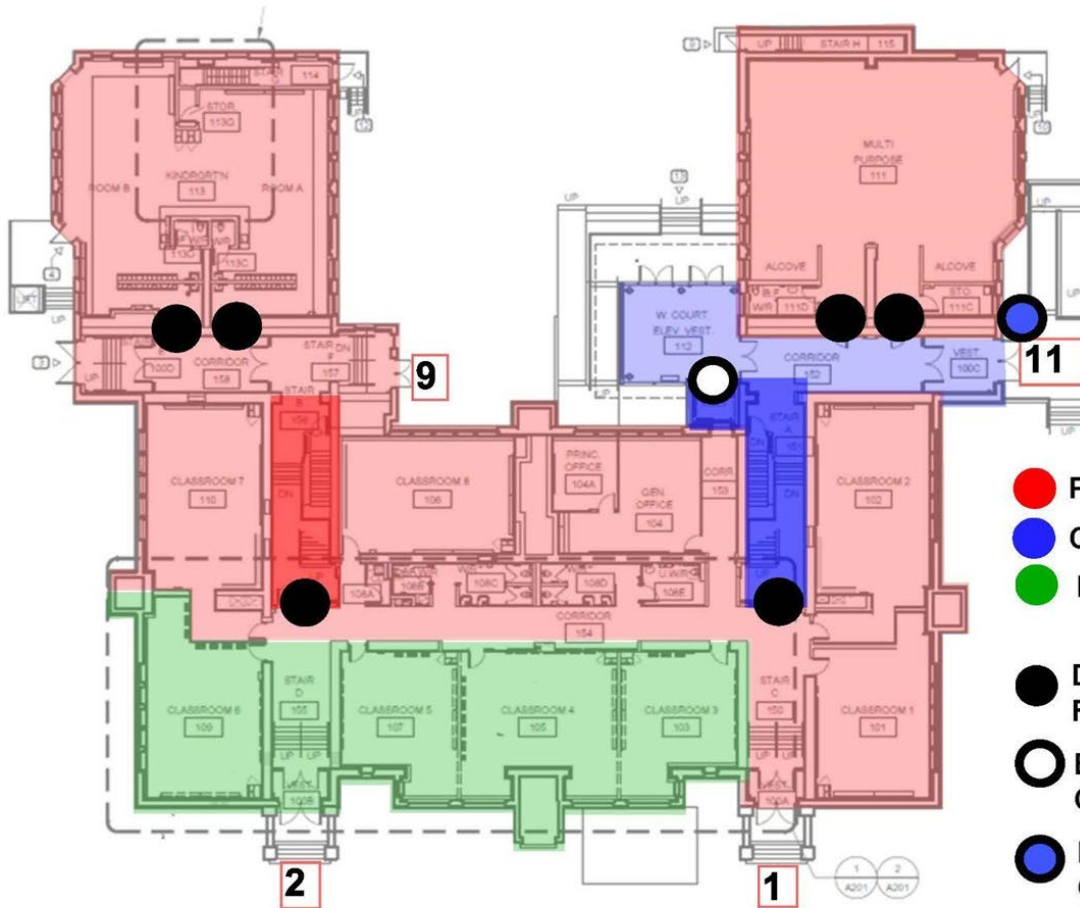




- Pape Ave JPS Students
- Con.Ed Adult Students
- Pape Ave JPS Public + Admin.
- PCH Child Care

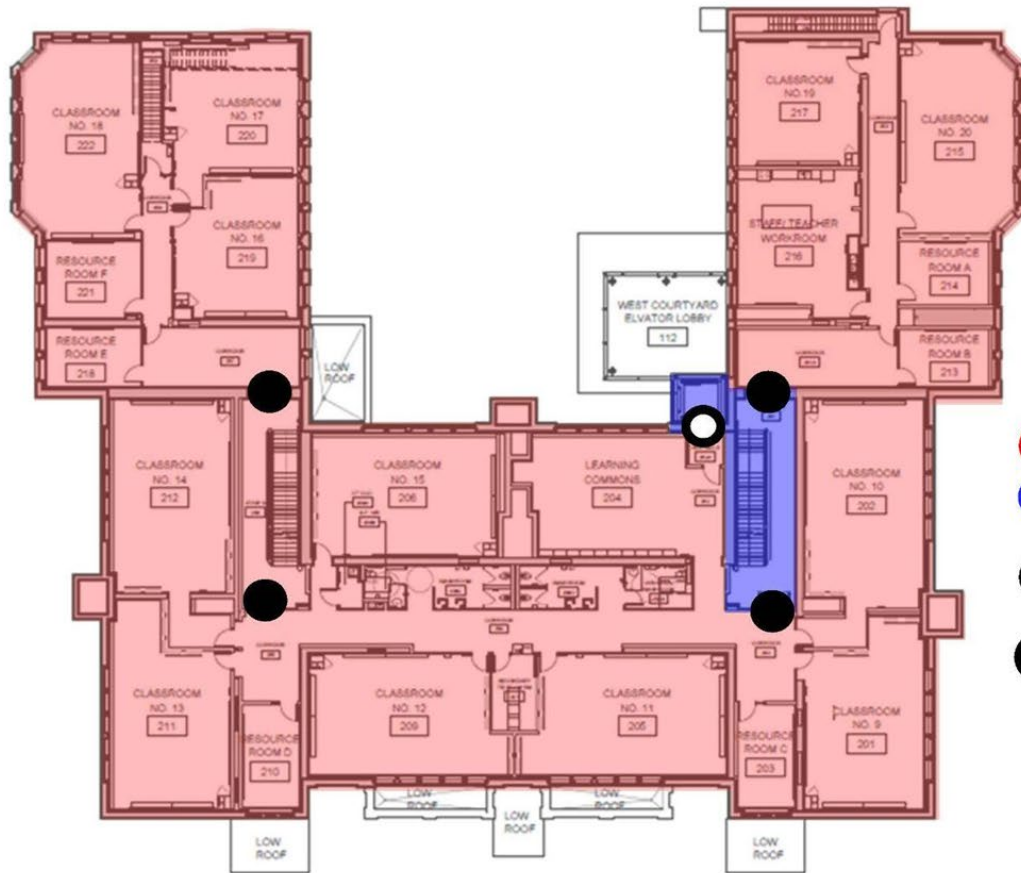


-  Con.Ed Stair
-  Pape Ave JPS Stair



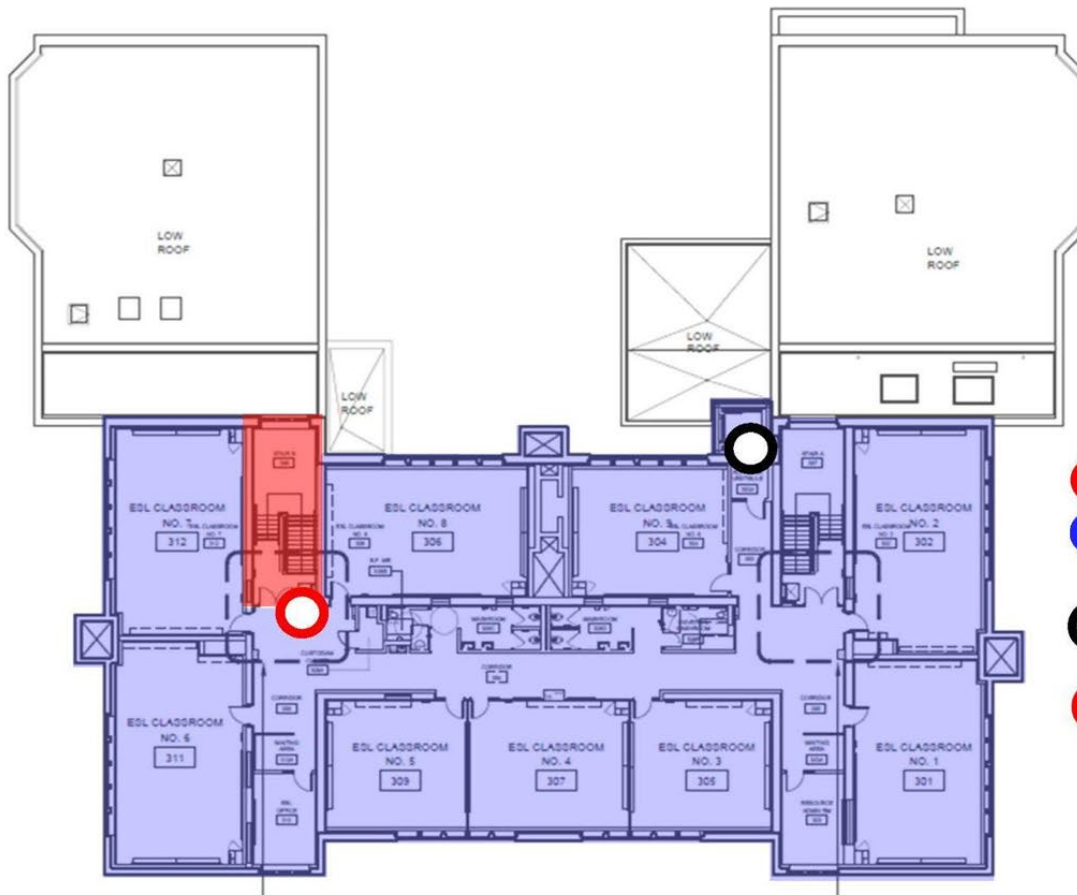
- Pape Ave JPS
- Con.Ed Adult
- PCH Child Care
- Door to Receive Card Reader Access*
- Elevator to Receive Card Reader Access
- New iPhone System Connected to RM#305 Third Floor

*Doors locked from inside stair side only



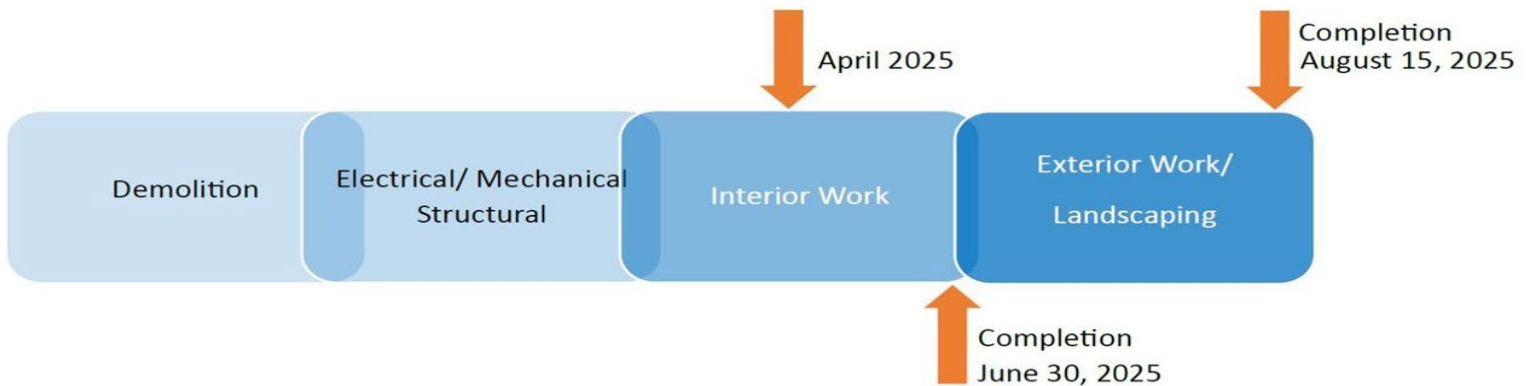
- Pape Ave JPS
- Con.Ed Adult
- Door to Receive Card Reader Access*
- Elevator to Receive Card Reader Access

***Doors locked from inside stair side only**



- Pape Ave JPS
- Con.Ed Adult
- Elevator to Receive Card Reader Access
- Signage For Emergency Use Only

Construction timeline



Progress to date:

- Demolition of existing Mechanical and Electrical systems is complete.
- New metal stud & gypsum board partition installations are complete.
- New Mechanical and Electrical rough-in installation are complete.
- Flooring, Tiling, and interior finishes work is underway and progressing.

Look ahead for work in April & May

- Interior finishes and fitments will be complete; floor tiles, ceiling tile & grids will be installed.
- Mechanical and electrical work will be complete and fixtures will be installed.

Progress Photos



Interior Corridor- Signage and protection



Mechanical awaiting fixture installation



Preparation for tile flooring and mechanical fixtures



General interior progress- Rooms and gypsum board

Pape Avenue Jr. PS - Renovations

The temporary relocation of Pape Ave JPS presents an opportunity to undertake extensive renovations in the building.

- Recent facility condition assessment of the building identified 40 building systems and components in urgent or high need of replacement
- Renovations would include replacement of mechanical and electrical systems, building envelope upgrades, site improvements, and interior work.
- The high-level cost for the work would be approximately \$10M w/ work expected to commence Fall 2025

Pape Avenue Jr. PS - Renovations

Building Envelope:

- TDSB recently replaced all windows in the original 1908 building with careful consideration to the heritage character of the elevations.
- Windows in the 1957 addition to be replaced with high performance aluminum frames c/w insulated glazing units and increased operable vents for improved natural ventilation.

Interior:

- Minor restoration work of building components as required. New millwork in classrooms to facilitate heating plant upgrade. New flooring and ceilings throughout both buildings.

Pape Avenue Jr. PS - Renovations

Electrical:

- Replace electrical distribution services in both 1907 and 1958 trical distribution services in both 1907 and 1958 buildings.
- Upgrade lighting fixtures throughout (interior and exterior) to LED. Upgrade security system.

Site Improvements:

- Replace asphalt in parking and play areas and replace play equipment.
- The final exterior scope of work would be contingent on a master plan study involving all stake holders (recognizing the complications of the Metrolinx project on the east side of the property) to best meet the needs of the school.

Pape Avenue Jr. PS - Renovations

Mechanical

- Replace heating plant from steam to hot water system.
- Replace air handling units in 1958 and refurbish ventilation system in 1907 building. Deep clean all existing ductwork and grilles.
- Provide new domestic hot water system to service both buildings.
- Miscellaneous replacement of plumbing fixtures throughout.



Planning for the Transportation of Eligible Students

**Garry Green, Senior Manager,
Community, Business & Student Transportation Services**

Ellie Cameron, Manager, Student Transportation Services

Policy P.020, “Transportation of Students” Section 6.10

Eligibility Criteria

(a) Distance

Transportation is provided to students who would otherwise be excused from attendance at a school because of distance as provided by the Educational Act, Section 21, based on grade level as of September 1 of the school year.

- (i) Junior Kindergarten to Grade 5: 1.6 km or more* (by school bus)
- (ii) Grades 6 to 8: 3.2 km or more* (by TTC tickets)
- (iii) Grade 9 to 12: 4.8 km or more*+ (by TTC tickets)

*Distance to be measured from closest public thoroughfare of the residence of the student to nearest public access to the school building.

*Grade 6 students may be provided with bus transportation if the most direct TTC route requires more than one transfer.

****Amendments to bus eligibility and routes and designated pick-up/drop-off locations to accommodate affected families***

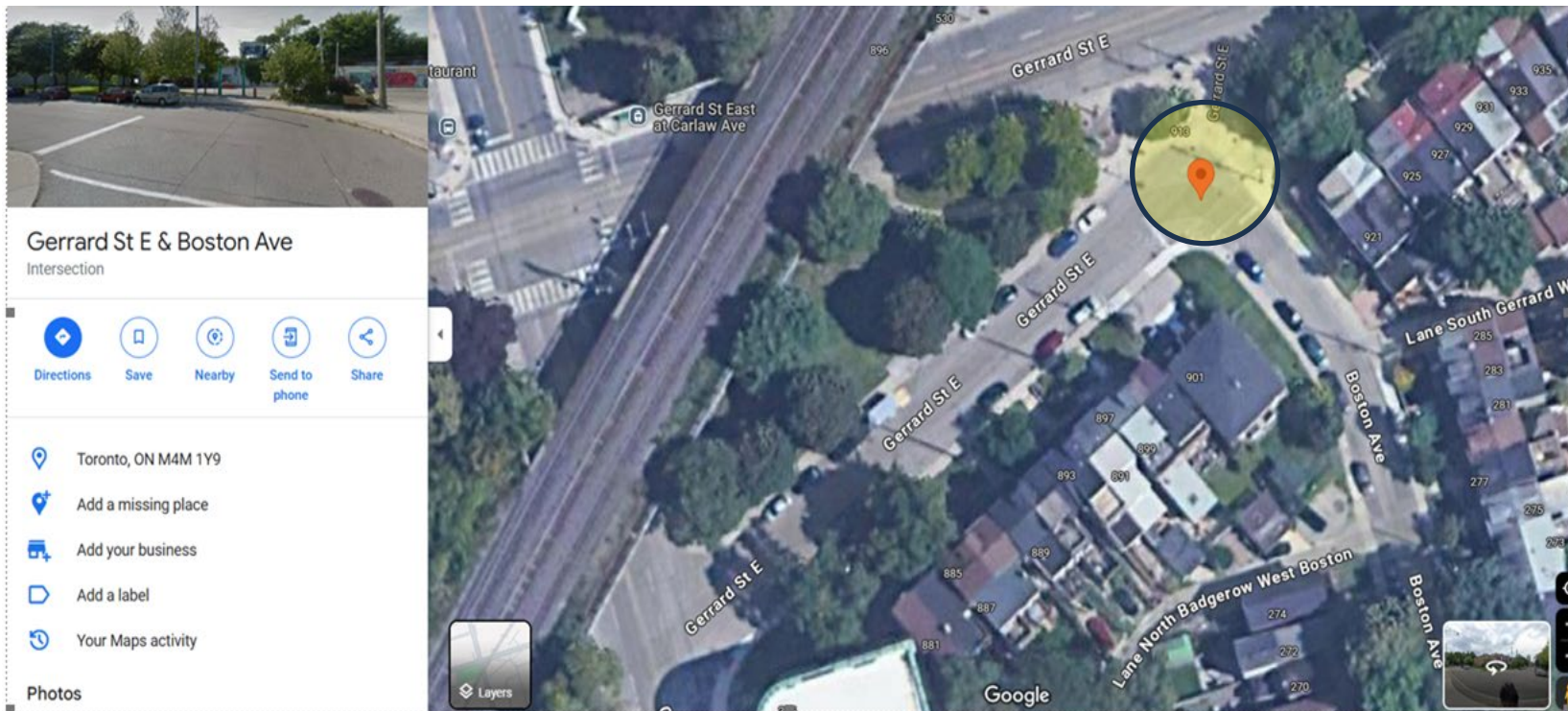
*For the purposes of relocation only, the qualifying distance for Grades 6-8 will be 1.6 km.

Bus Drop Off and Pick Up Location

- Common Bus Stops are provided for students attending French Immersion, Gifted and regular education programs.
- A local stop has been identified on the northside of Gerrard St. East - West of Boston Ave. at the parkette.
- Currently there is an existing route that can accommodate this pick up and drop off, but times and routes may change during the routing process over the summer.
- We will explore whether an additional route is necessary as circumstances emerge.
- An Area Review was conducted on April 11 to identify any potential concerns and provided to the city. The best location for the school pick up & drop off is in front of the school on Jones Ave between the parking lot and TTC stop where a natural layby exists.

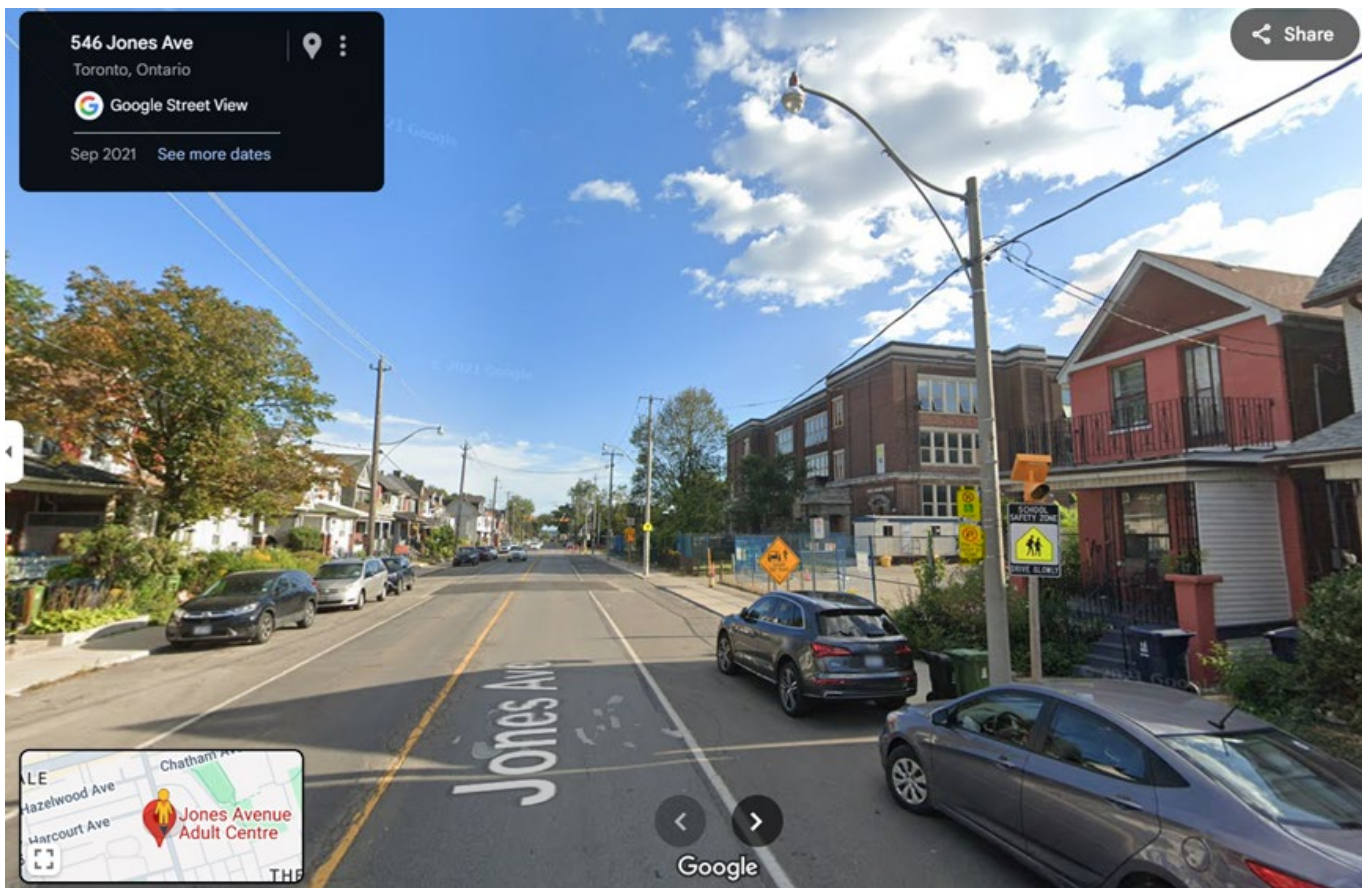
Bus Drop Off and Pick Up Location - Map

Pick Up/Drop Off Location (Home Neighbourhood): Northside of Gerrard St. East - West of Boston Ave. at the parkette. This is not a busy thoroughfare, p/u on the north side of the street a sidewalk does not impinge on private property with so many students utilizing the stop and is within easy walking distance of eligible addresses..



Bus Drop Off and Pick Up Location at Jones Avenue - Map

Pick Up/Drop Off Location Jones Ave. School: After the parking lot and prior to the TTC with direct access to the school. There is a calming curb after the TTC stop which creates a natural layby.



Empty Seat Policy

- Empty seat requests will be accepted by Transportation starting on September 30th of each school year. Any priority given to the forms should be indicated numerically in the top right corner of the form. Schools can collect the Empty Seat Forms earlier but will not process until we are certain all eligible students are assigned.
- Once forms are processed, student data will be entered into the routing system & BusPlanner Web will be updated within 24-48 hours to show students on the bus list.
- School staff are requested to inform parents whether their request is approved or denied & to provide the routing information or reason for denial.
- Depending on the how full a large bus is, we may look at Empty Seat requests earlier, but that would be a conversation with Area Supervisor Jordan Atanasovski the school Principal.



Day-to-Day - Pape Avenue Jr. PS at Jones Avenue

**Carol Shea, Principal, Pape Avenue Jr. PS
Anastasia Poulis, Superintendent, FOS15**

- School start and end times for FDK and Grades 1-6 will be the same at Jones for all Pape students:
 - Supervision in our yard begins at 8:40 a.m. for an 8:50 a.m. transition to our instructional day beginning at 8:55 a.m.
 - Dismissal at 3:20 p.m. for all students
 - Supervision in our yard 3:30 p.m.
 - Additional allocation of Vice-Principal and Office Assistant
 - 14.5 teachers, 11 homeroom classes, 1.0 Special Needs Assistant, 0.5 Educational Assistant
 - 1.0 Office Administrator
- International Language program to continue.
- Opportunities to support students and families during transition (e.g., open house in late August prior to school start up).
- Plans are underway with administrator at Earl Grey Sr. PS to organize access to their facilities: Gym and pool, outdoor field and track.

- School plan in place to provide release for teachers and all staff to pack materials
- Student experiences are planned to provide additional opportunities during this packing time.
- Move Planning Committee has been established, representing parents, PCH and school staff to work through and identify key next steps and support school-wide communication.
- Working alongside Move Coordinator for transition planning.
- Library Services will be supporting the weeding and packing of Pape Library collection on May 20, 21 and 22.

Update on Childcare & EarlyON

Liz Hoang, Manager, Child Care Services
Leslie Murray, Early Years Coordinator,
Child Care Services

**Kim Fritz, Manager, EarlyON Child & Family
Centres**

Pape Childrens House

- PCH is scheduled to move to Jones in mid-August.
- TDSB staff are working very closely with PCH to support a smooth transition to Jones and have scheduled bi-weekly meetings.
- Interior construction is scheduled to be completed by the end of June, and exterior construction is scheduled to be completed by mid-August.
- PCH is in the process of licensing the space at Jones, but this cannot be completed until all interior and exterior construction is complete and the Ministry inspects the space.
- PCH will be closed from June 30 to July 4 to support moving and set up activities so there will be no disruption to care in August when they move.

City of Toronto ARC Program

- The City of Toronto's ARC Program currently serves several Pape students at the Matty Eckler Community Centre.
- The distance to Jones is outside of their walking escort boundary, and they will be developing a temporary program at Jones.
- The program at Jones will operate until Pape returns to the original school location, at which time ARC will resume serving Pape students at the Matty Eckler Community Centre.

Other External Program Providers

- Eastview Boys & Girls Club
 - Exploring opportunities to serve Pape Ave. Jr. PS students.
- Sprouts
 - Will pick up Pape Ave. Jr. PS students and new SK+ students from Jones and bring them to their community location.
 - Exploring opportunities to serve new Pape Ave. Jr. PS JK students
- Rock Oasis
 - Reviewing whether they can pick up students from Jones.
- Artists Play
 - Will pick up Pape Ave. Jr. PS students from Jones and bring them to their community location.

EarlyON Child & Family Centre

- Free program for children 0-6 and their parents/guardians/caregivers that supports children's development and provides opportunities for parents and caregivers to connect.
- Supports school transitions through building positive relationships with the school.
- Establishes connections with local resources and community agencies including appropriate referral services.
- Staffed by a Registered Early Childhood Educator.
- We look forward to continuing to support families from the new location!
- Further details will be shared in the future.



Questions and Discussion



Closing Remarks

Sara Ehrhardt, Trustee, Ward 15

