

# **Avondale Accommodation Pressures**

## **Program Area Review Team Meeting #4**

**February 14, 2023.**



## Agenda

1	Welcome and Land Acknowledgment
2	Meeting Norms and Introductions
3	Role of the PART Revisited
4	Review of feedback from the Public Meeting
5	Thoughts and comments from School Representatives and or Individuals
6	Determining PART Recommendations for the Report
7	Next Steps: <ul style="list-style-type: none"><li>• Staff and PART Reports</li><li>• Submitting to Trustees</li><li>• Making a Deputation to Trustees</li><li>• Trustees making a final decision</li></ul>
8	Next Meeting of the PART Committee

## Welcome and Thank you

We value your time and respect your thoughts.

Thank you for participating in this Program Area Review Team by representing your school and giving us your perspectives on how to make your school and our school system better.

## Land Acknowledgement

"We acknowledge we are hosted on the lands of the Mississauga's of the Anishinaabe, the Haudenosaunee Confederacy and the Wendat. We also recognise the enduring presence of all First Nations, Métis and Inuit peoples."

## Meeting Norms

- Meetings will be chaired by Domenic Giorgi, Superintendent
- Members will arrive on time and we will ensure that the meeting ends at the scheduled time
- The chair will follow the meeting agenda
- Members will treat each other, and the opinions of each other, with respect
- Meaningful information sharing comes through dialogue and collaboration

# Role of the PART

## Role of the PART

- Advisory Role
- The PART shall make recommendations to inform staff and Board
- PART recommendation(s) may be modified by staff and/or Board members

## Functioning of the PART

- The PART shall function by reaching **consensus** among members
- If consensus cannot be reached a vote shall occur
- Voting members: Principals, and Parent Representatives (1 vote from each school). The same representatives are expected to attend all working meetings.
- Trustees here to observe the PART's conversations. They do not vote.
- Quorum: If a school is not present, the Superintendent will represent the school

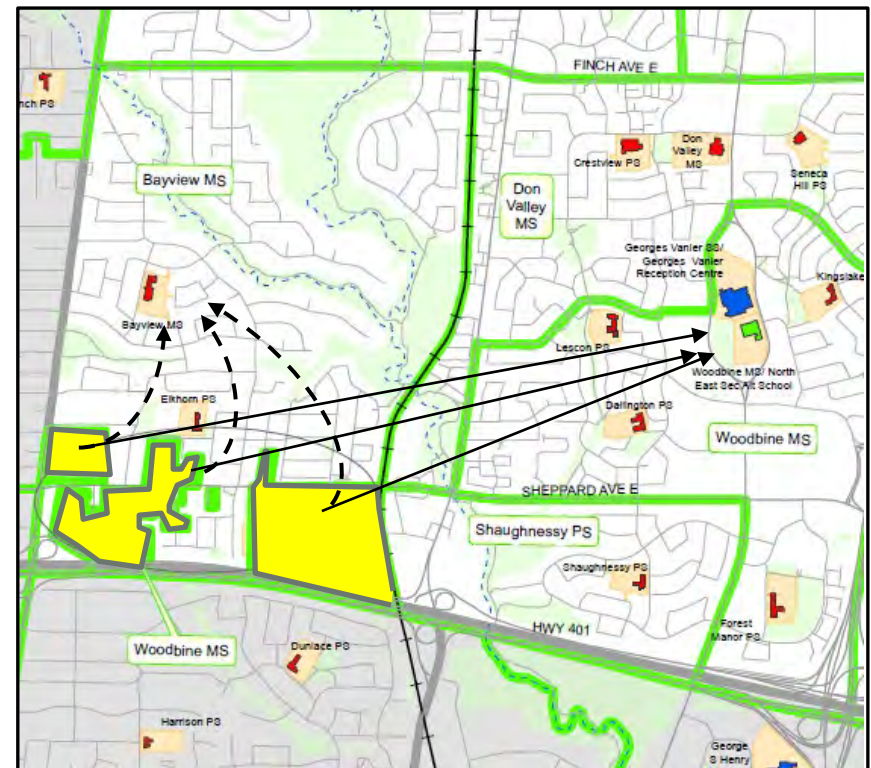
# Staff Recommended Scenario for Discussion

## Woodbine MS boundary change to Bayview MS

- This option also includes giving students in Grade 6-8, who have been redirected to Woodbine MS, an opportunity to return to Bayview MS.

Grade 6 to 8 Students to Bayview MS	2022	2027	2032
Currently Attending Woodbine	18	20	21
Currently Not Attending Woodbine	42	63	65
Total	60	83	86

- Currently there are about 15 Grade 5 students at Crestview who could decide to attend Bayview MS



# Staff Recommended Scenario for Discussion

## Avondale Elem Alt School relocates to Bayview MS

- Staff is recommending that Avondale Elementary Alternative School be relocated to Bayview MS. After looking at several possible solutions, staff considers Bayview MS to be the most viable due to its location and availability of space.

### **Opportunities of Relocating Avondale EA Sch to Bayview MS; and ending Redirection to Woodbine:**

- At 2.2 km between schools (3.1 km walking), Bayview MS is the closest school. Existing familiarity to Bayview school and neighbourhood. Bayview MS hosted Avondale PS and EA Sch between 2015 and 2019. Ends redirection to Woodbine for students from new residential developments since 2002
- Access to similar program spaces such as Science labs, Design & Tech rooms, large gymnasium, although not as new as at the Avondale building.
- Enough space to keep Avondale EA School in tact as a JK-8& end redirection to Woodbine MS.
- No construction or renovation required. Age and grade appropriate indoor and outdoor spaces already exist at Bayview MS.
- Improves the overall utilization at Bayview MS, and improves the possibility of a new CTL school being approved.
- The closest school with capacity.
- The option is likely to lose the least amount Avondale EA students:
  - The second largest number of Avondale EA (17) students come from the Bayview MS area. First is the Avondale PS attendance area at 59.

### **Challenges:**

- The loss of Avondale EA students.
- For Crestview graduates, friendships and peers may break as most graduates go to Woodbine for Gr.6.
- Creating the expectation of attending Earl Haig SS as peer groups and friendships forms with Bayview MS students.
- Projected 7 portables remain needed Avondale PS, although not 13 if nothing is done.
- Age appropriate Before and After programming for Avondale EA students at Bayview.



# Emails Received So Far:

(Repeated from PART Meeting#3)

67 emails have been received

- 48 from Avondale EA, 13 from Avondale PS, 2 from Crestview PS

## Common Themes Observed:

### Avondale PS:

- No support for moving Gr. 6 to 8 to Bayview MS (petition with up to 500 signatures)
  - K-8 model provides stability
  - Hard ship and mental stress on families coordinating pickup and drop off between two schools
  - Distance, bussing and or other transportation to Bayview MS, with costs to family, and increased traffic at Bayview
  - Need for Extended Day Program at Bayview MS

### Crestview PS:

- If address is impacted by the PART

### Avondale Elem Alt:

- No support for moving Avondale EA Sch to Bayview
  - Lack of appropriate spaces
    - Library, Extended Day Program, outdoor features, separation from the MS population, plus other.
  - Portables still needed at Avondale
  - Is this the last move?
  - Bussing is needed.
  - Increased traffic at Bayview
  - No car, will not transition to Bayview MS
- Some support to relocate if spaces are appropriate and ready
- Poor planning for building too small of a school and allowing for some many new condos
- Burnett and Oakburn are better options.

# What have we heard from the PART and Public, so far:

(Repeated from PART Public Meeting)

## Most Common Themes Observed:

- Getting to and from school
- Child care being available
- Use Burnett PS
- Mental health and stress caused by change
- Parking, drop off and pick up
- Hardship to family when JK to 8 is split up between schools
- Improvements are needed at Bayview MS before relocation can happen
- Separation of youngest students from the oldest at Bayview MS.
- Why was Avondale not built to the correct size. Avondale PS still needs portables.
- What is the long term plan for Avondale area schools?
- Existing use of specialized spaces will be lessened for Bayview MS students
- Equity concerns: impact on New Canadians, local school for local students versus a school with out boundary.

## Responses of 91 emails plus from conversations, by school

### Avondale Elem Alt (51 emails):

- No support for moving Avondale EA Sch to Bayview MS

### Avondale PS (35 emails):

- No support for moving Avondale PS Gr. 6 to 8 to Bayview MS (petition with up to 500 signatures)

### Bayview MS (3 emails)

- No support for receiving Avondale Elem Alt

### Crestview PS (2 emails):

- If address is impacted by the PART
- Prefer a pathway to Don Valley MS instead of Bayview MS or Woodbine MS

## Suggested alternatives:

- **Oakburn Centre, Burnett PS**, and Forrest Valley Outdoor Education Centre
- Redirect new students only
- Phase out Alternative Programs from crowded schools and phase in at uncrowded schools
- Look at the problem through an evaluation table

# Review of feedback from Public Meeting:

**Total number of users: 176 Internet users, 5 phone users. Total registered users of 270**

Theme of Chat	Count
Needed and timing of improvements at Bayview (play area, EDP, bussing, library, washrooms, parking)	19
Other Options: Hollywood, Claude Watson, Burnett, Relocate beyond Willowdale, eliminate Avondale EA, Move PS 6-8	13
Frustration, Unheard, Not Fair	8
Budget needed for improvements at Bayview MS	5
How will more residential development be accommodated	4
More portables at Avondale PS, who goes into them?	4
Thank you for the information, hosting	4
When will the final decision be made?	3
Middle school student behaviour	3
Staggered start times	2
How many EA students will remain at Avondale PS, go to Bayview MS?	2
What is the successful rate of application to school?	2
Communities put against each other	2
Developers pay; Education Development Charges, Delay future development	2
Can the recording of this meeting, and or power point be made available?	2
How are projections done?	2
Hardship on families (transportation, looking after siblings, extra cost )	2
More driving is counter to the greener environment initiative	2
More portables versus don't delay in relocation	2

## Thoughts and Comments from Schools:

See separate documents that were submitted by School Representatives and presented to the PART

## Determining PART Recommendations for the Report:

1. Is there consensus that relocation is necessary? Yes.
  - The PART recommends that relocation is necessary.
  
2. Is there consensus that a boundary change is necessary? Yes.
  - The PART recommends a Woodbine MS to Bayview MS boundary change for those redirected Gr.6 to 8 students is necessary.
  
3. Is there consensus that Avondale EA School relocate to Bayview MS? No, a vote is required.
  - The PART recommends that Avondale EA School relocate to Bayview MS.

	Yes	No
1 Avondale EA Sch	Y	
2 Avondale PS	Y	
3 Bayview MS		N
4 Crestview PS	Y	
5 Elkhorn PS		N
6 Finch PS	Y	
7 Hollywood PS	Y	
8 McKee PS	Y	
9 Woodbine MS		N
<b>Total</b>	<b>6</b>	<b>3</b>

## Determining PART Recommendations for the Report:

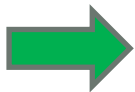
4. Is there consensus for the Woodbine MS boundary change to Bayview MS for those Grade 6 to Grade 8 students who have been redirected to Woodbine MS? Yes.
  - The PART recommends a Woodbine MS boundary change to Bayview MS for those Grade 6 to Grade 8 students redirected there.
5. Is there consensus that implementation be for September 2024? Yes.
  - The PART recommends that implementation be for September 2024
6. Is there consensus that a detailed budget be created and be put forward to Trustees for items already mentioned during the PART process? Yes.
  - The PART recommends that a detailed budget be created and be put forward to Trustees for items already mentioned during the PART process.

## Next Steps

- Getting information back to your school
- Getting information from the community to PART membership.
  - Email [accommodationreviews@tdsb.on.ca](mailto:accommodationreviews@tdsb.on.ca)
  - Speak or email your principal, superintendent, trustee

## Meeting Dates:

Date	Time	Meeting Type
Tuesday, December 20, 2022	6:00 p.m. to 7:30 p.m.	Working PART Meeting #2
Thursday January 12, 2023	6:00 p.m. to 7:30 p.m.	Working PART Meeting #2
Tuesday January 31, 2023	5:30 p.m. to 8:00 p.m.	Working PART Meeting #3
Thursday February 9, 2023	6:30 p.m. to 8:30 p.m.	Public Meeting
Tuesday February 14, 2023	6:00 p.m. to 8:00 p.m.	Working PART Meeting #4



## Next Steps

### Program Area Review Team Timeline

#### March to April 2023

- PART will finalize its report and send it to staff, who will then review it.
- Staff will make recommendations based on feedback received, and from the PART Report.
- The PART's report is appended to the staff report and is presented to Trustees for final decision.
- Planning & Priorities Committee meeting scheduled for **Wednesday, April 19, 2023.**
- P&P Meeting is when the **public has an opportunity to depute to Board**
- Regular Board Meeting scheduled for Wednesday, April 26, 2023.



## **Good Night and Thank you:**

We value your time and respect your thoughts.

Thank you for participating in this Program Area Review Team by representing your school and giving us your perspectives on how to make your school and our school system better.



Toronto  
District  
School  
Board