

# **Avondale Accommodation Pressures**

## **Program Area Review Team Meeting #2**

**January 12, 2023**



### Agenda

1	Welcome and Land Acknowledgment
2	Meeting Norms and Introductions
3	<p>Review from Meeting #1</p> <p>a) Setting the Context</p> <ul style="list-style-type: none"><li>• Long-Term Program and Accommodation Strategy (LTPAS)</li><li>• Our Guiding Principles from the LTPAS and used for this Program Area Review (PART)</li><li>• Why are we here?</li><li>• Overview of Studies and Actions To Date</li><li>• How New Schools are Financed and Built in Ontario</li><li>• Local Feasibility Team</li></ul> <p>b) What is expected of the PART?</p> <p>c) Overview of Avondale EA, Avondale PS, Bayview MS, Crestview PS, Woodbine MS</p> <p>d) Other Sites and Options Considered by the LFT</p>
4	<p>a) Discussion. What are your thoughts, comments, questions?</p> <p>b) Email correspondence received so far</p>
5	Next Steps and Good Night

## **Welcome and Thank you**

We value your time and respect your thoughts.

Thank you for participating in this Program Area Review Team by representing your school and giving us your perspectives on how to make your school and our school system better.

## Land Acknowledgement

"We acknowledge we are hosted on the lands of the Mississauga's of the Anishinaabe, the Haudenosaunee Confederacy and the Wendat. We also recognise the enduring presence of all First Nations, Métis and Inuit peoples."

## Meeting Norms

- Meetings will be chaired by Domenic Giorgi, Superintendent
- Members will arrive on time and we will ensure that the meeting ends at the scheduled time
- The chair will follow the meeting agenda
- Members will treat each other, and the opinions of each other, with respect
- Meaningful information sharing comes through dialogue and collaboration

## PART Members

### Trustees & Superintendents:

- Trustee, Weidong Pei, Ward 12
- Trustee, James Li, Ward 13
- SOE, Domenic Giorgi, LN 12
- SOE, Marwa Hamid, LN 8
- SOE, Kurt McIntosh, LN 11

### Schools:

- Principal, Artemis Manukas, Avondale Elementary Alternative Sch & Avondale PS
- Principal, Janice Kent, Bayview MS
- Principal, Andrea Samartzis, Crestview PS
- Principal (A), Danila Duliunas, Elkhorn PS
- Principal, Dima Nijmeh-Mantia, Finch PS
- Principal, Bill Waldman, Hollywood PS
- Principal, Jeanette Lang, McKee PS
- Principal, Michelle Fraser, Woodbine MS

## PART Members

### **Avondale EA Sch**

- Parent: Melanie Tolensky
- Parent: Cheri Louie

### **Avondale PS**

- Parent: Stacey Found
- Parent: Maki Nemoto

### **Bayview MS**

- Parent: Melody Nguyen

### **Crestview PS**

- Parent: Monique Phillips

### **Elkhorn PS**

- Parent: Dawn Bowles

### **Finch PS**

- Parent: Natalia Kao

### **Hollywood PS**

- Parent: Jaime Fraser

### **McKee PS**

- Parent: Melissa Ash
- Parent: Maria Speare

### **Woodbine MS**

- Parent: Danielle Ferguson

# Setting the Context: Long-Term Program and Accommodation Strategy (LTPAS)

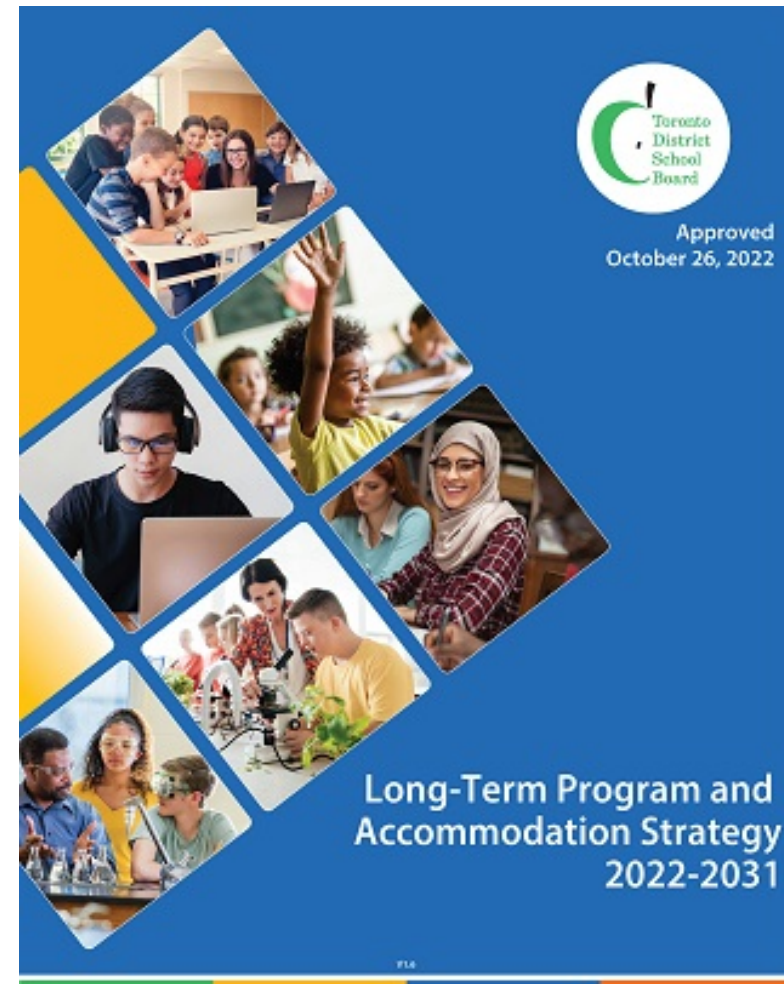
- The document identifies a number of studies to be undertaken to resolve existing and future accommodation pressures in the City

## **Program Relocation Study :**

Explore the potential relocation of Avondale Alternative Elementary School to address growing enrolment and accommodation pressures at Avondale PS. (see Tab 4-22)

## **Boundary Change Study :**

Explore a boundary change to address the middle school pathway for students currently redirected to Crestview PS / Woodbine MS. This study will include Bayview Middle School. (see Tab 4-24)





## Setting the Context: Our Guiding Principles from the LTPAS and used for this PART

### The Guiding Principles;

- Are intended to move the TDSB forward as a system to better meet the needs of students.
- They represent broad goals to which we aspire over time. The degree to which they can be achieved will be influenced by local circumstances and availability of funding.
- Are not intended to repeat what is already found in the TDSB's Mission, Values and Goals, policies and procedures, but to provide supplemental guidance to these documents.
- Inform accommodation studies.
- Are grouped under two themes:
  - **“Equity of Access”** and **“Efficient and Flexible Learning Space”**.

## **Setting the Context: Our Guiding Principles of the LTPAS and this PART – Equity of Access**

These Guiding Principles seek to strengthen access to neighbourhood schools that are of a sufficient size to enable them to provide the range of program opportunities that students want and need to be successful.

- 1. Neighbourhood schools that meet the needs of all students**
- 2. Optimal elementary school size of at least two classes per grade**
3. Optimal secondary school size of at least 1,000 students
- 4. Consistent attendance boundaries**
- 5. School locations that support active transportation**
- 6. Minimal transitions**
7. Balanced enrolment across tracks

# Setting the Context: Our Guiding Principles of the LTPAS and this PART - Efficient and Flexible Learning Space

These Guiding Principles promote flexibility to enable us to adapt to a dynamic and changing city while efficiently managing space.

- 8. Optimal utilization rate\* of 90%**
- 9. Minimal use of portables**
10. Flexible buildings and sites
11. Different models of school organization

\*An indicator on how well a school is being used. The number of students attending a school compared to the number of students that the school was designed to hold, enrolment divided by capacity

## Setting the Context: Why are we here?

The Willowdale community is experiencing significant residential development and population changes that have resulted in enrolment growth at local schools.

Over the past twenty years, the TDSB has managed enrolment growth by changing school boundaries, moving programs, building additions and a new school (Avondale), and by sending students to schools outside the local community.

- Away from Elkhorn PS & Bayview MS to Crestview PS & Woodbine MS

Enrolment continues to grow at Avondale PS and portables are now being used. The school does not have space to manage future growth.

### **Long-term projections anticipate;**

- **Enrolment at Avondale PS will continue to exceed capacity.**
- **Bayview MS will continue to have surplus capacity.**

## Setting the Context: Why are we here?

**After listening to the context over the next few slides, we want to hear from you about Staff's recommendations.**

**What does this mean for your school?**

**What does this mean for your TDSB?**

Bayview MS

- Will increase its enrolment by having Avondale EA relocate to it, and receive some graduates from Crestview PS.

Crestview PS

- Some of its students will no longer graduate to Woodbine MS

Woodbine MS

- Will not receive as many graduates from Crestview PS

Avondale PS

- Will see a reduction in its over crowding

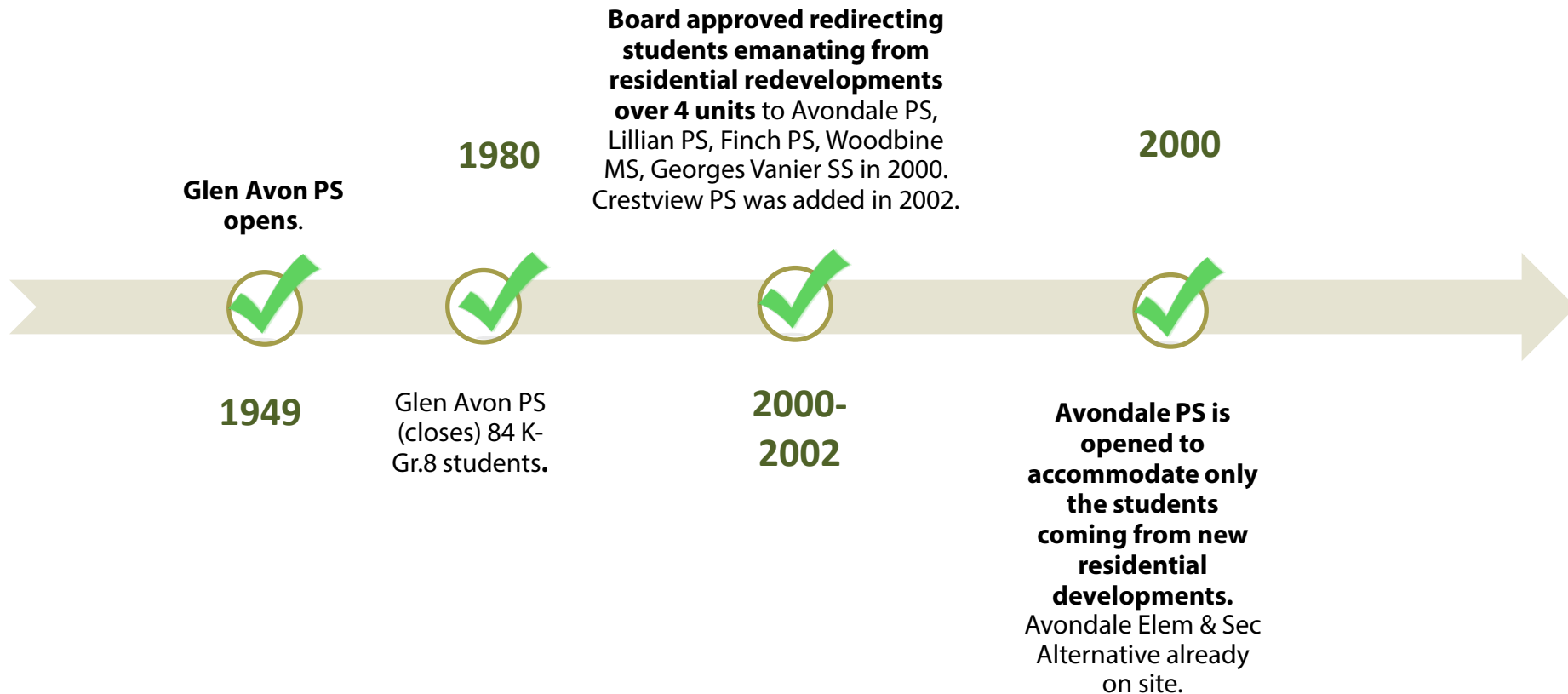
Avondale EA Sch

- Will relocate to Bayview MS

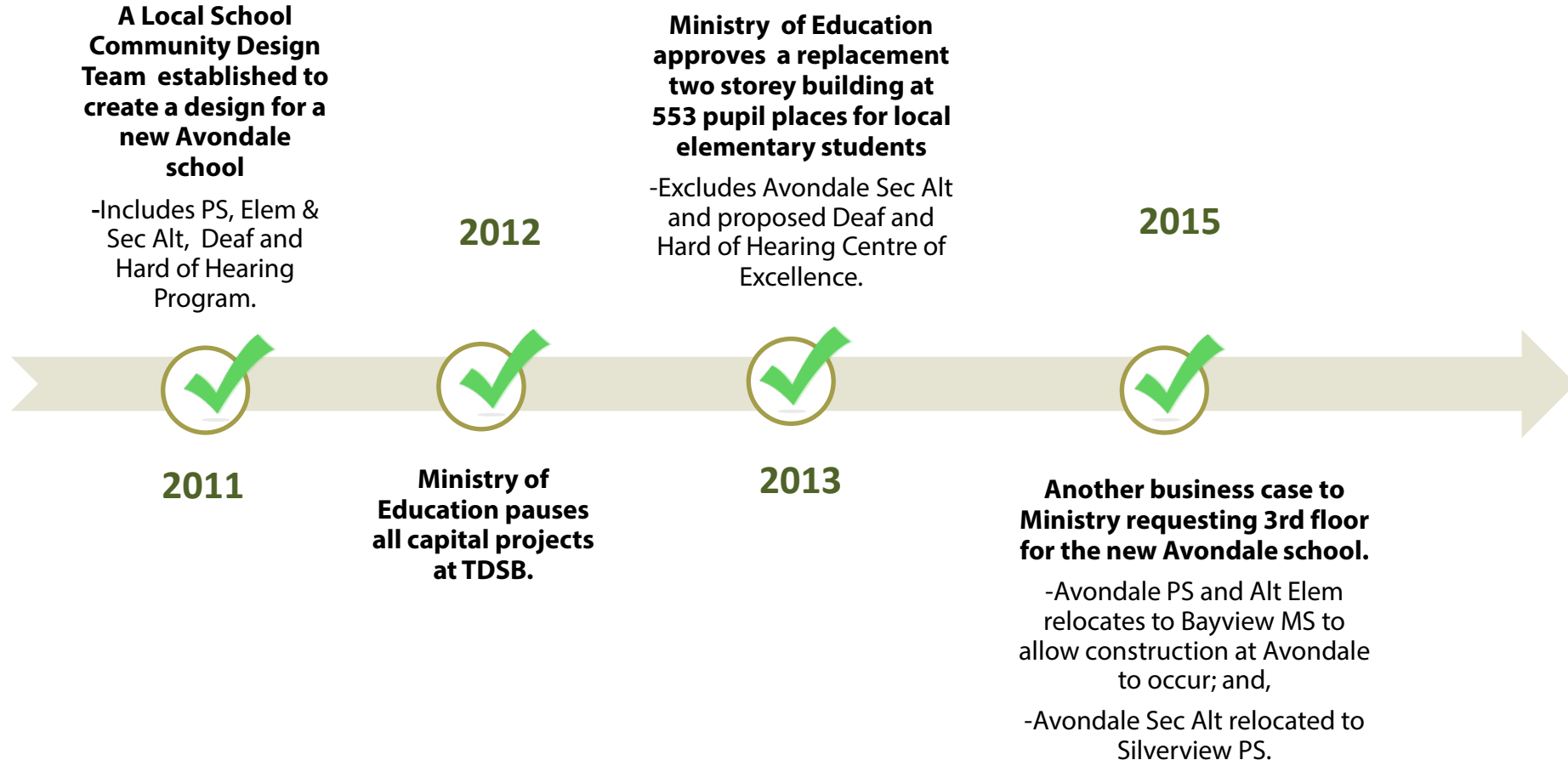
Elkhorn PS, Finch PS, Hollywood PS, and McKee PS

- Students will graduate to a larger enrolled Bayview MS and with Avondale EA Sch on site

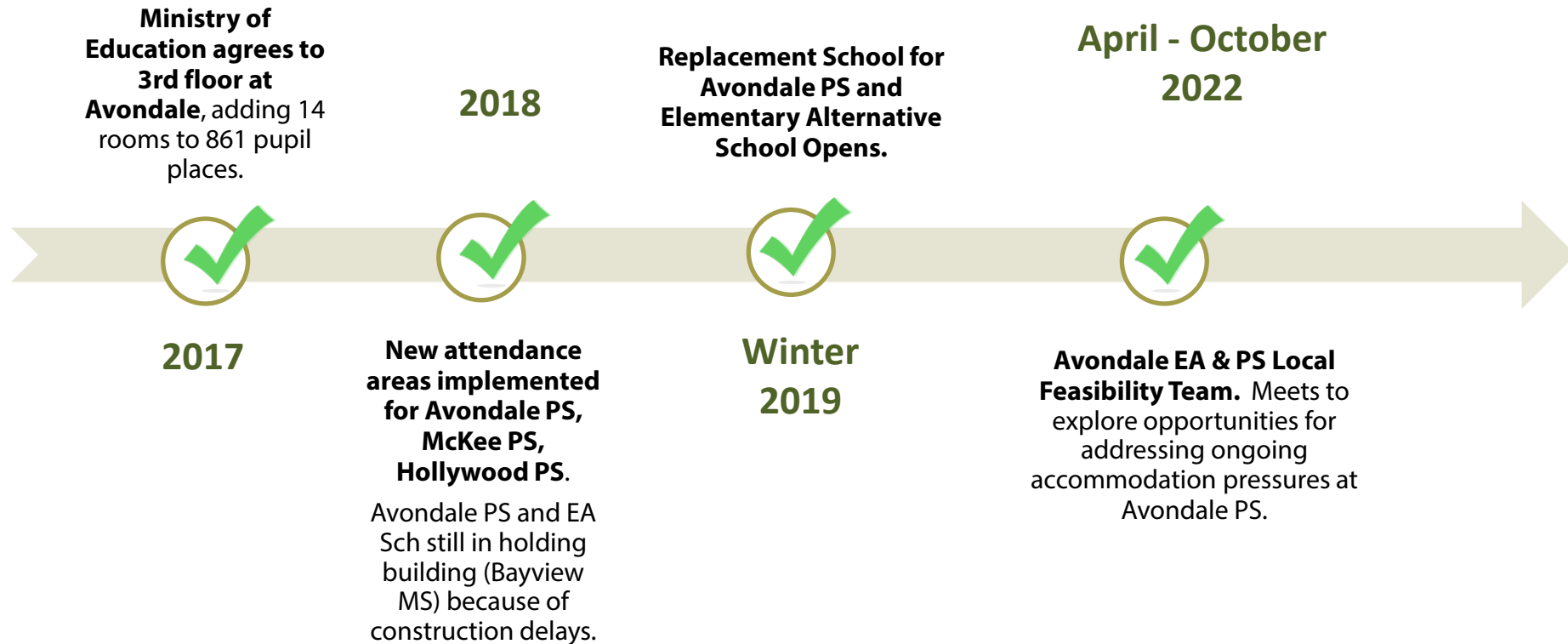
## Setting the Context: Overview of Studies and Actions To Date



## Setting the Context: Overview of Studies and Actions To Date



## Setting the Context: Overview of Studies and Actions To Date





# Setting the Context: How New Schools are Financed and Built in Ontario

Since 1998, School Boards lost the ability to self fund and make decisions about the construction of schools. Local property school taxes are collected and given to the Province who then fund school boards.

- It approves all school board construction for new and replacement schools, including additions across Ontario.
- It decides where the need is greatest and will then approve and fund the needed construction.

The need for new and replacement schools across the Province is great. Throughout Ontario,

- New communities are being built without schools, and then;
- Schools in existing communities need replacement or deep renovation.
- For just the TDSB, the need for new and replacement schools is extremely great:
  - \$3.7 billion is the backlog in repair as of May 2021.
  - 60 plus years is the average age of a TDSB school, 58 schools over 95 years old.
  - New communities are being created in Toronto where schools **do not** already exist (Downsview Airport, the Golden Mile, Mr. Christie lands in Etobicoke, Lower Yonge Precinct).
  - Existing communities are having more homes being built. Existing schools are already full (Yonge Sheppard Bayview, Yonge & Eglinton, Central Etobicoke).

# Setting the Context:

## How New Schools are Financed and Built in Ontario

### Decision Making and Funding:

The Ministry of Education takes on a stewardship role. In addition to approving, it provides rules and guidance on how approvals are granted so that tax-payers monies are appropriately spent.

- Through a Ministry created process, a school board will submit its top 10 priorities each year. TDSB Trustees confirm the priorities. The priorities are assessed by the Ministry and compared to priorities from across the Province.
- Typically, only one or two priorities are approved each year. TDSB is very fortunate as other school boards may not have any approvals.
- TDSB solely relies on this funding within this process.
  - Unlike other school boards in Ontario, the TDSB is not allowed collect Education Development Charges (EDC's) from developers to help support construction.

### Timing:

City approves housing construction well before a school is approved by the Ministry.

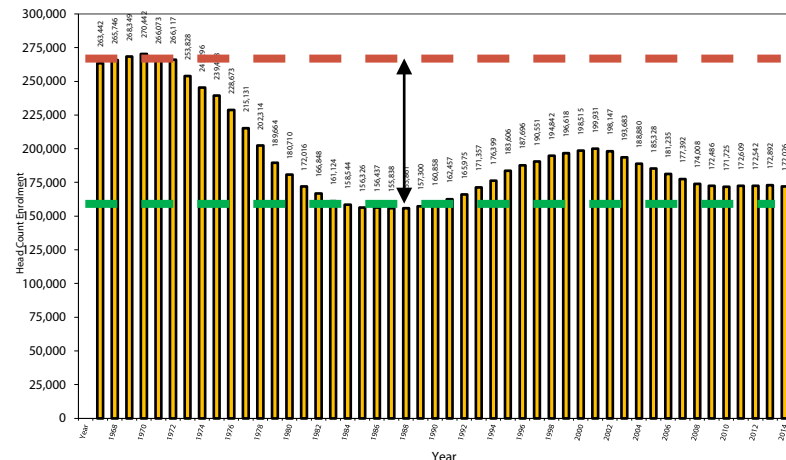
- 5 years is typically needed to build a new school from, approval, securing financing, design and construction.
  - Rapidly rising land and construction costs in Toronto requires the TDSB request approval for additional funds.
- The need for a new school is only recognized by the Ministry **after a very large number of students already exist.**
  - **Those existing students are often held in schools not in their community.**

# Setting the Context: How New Schools are Financed and Built in Ontario

**Ministry Requirements** for a school board when asking for funding and permission to build;

- The need is expressed for local students in local regular programs.
  - This excludes students brought into a community for programs, such as French Immersion and Alternative Programs.
- Schools are sized not for the peak enrolment, nor the lowest enrolment.. somewhere in between
  - Peaks enrolments will require temporary need for portables.
  - Low enrolments have fewer vacant classrooms, saving money on initial construction, and the cost to operate (heat, lighting, cleaning).

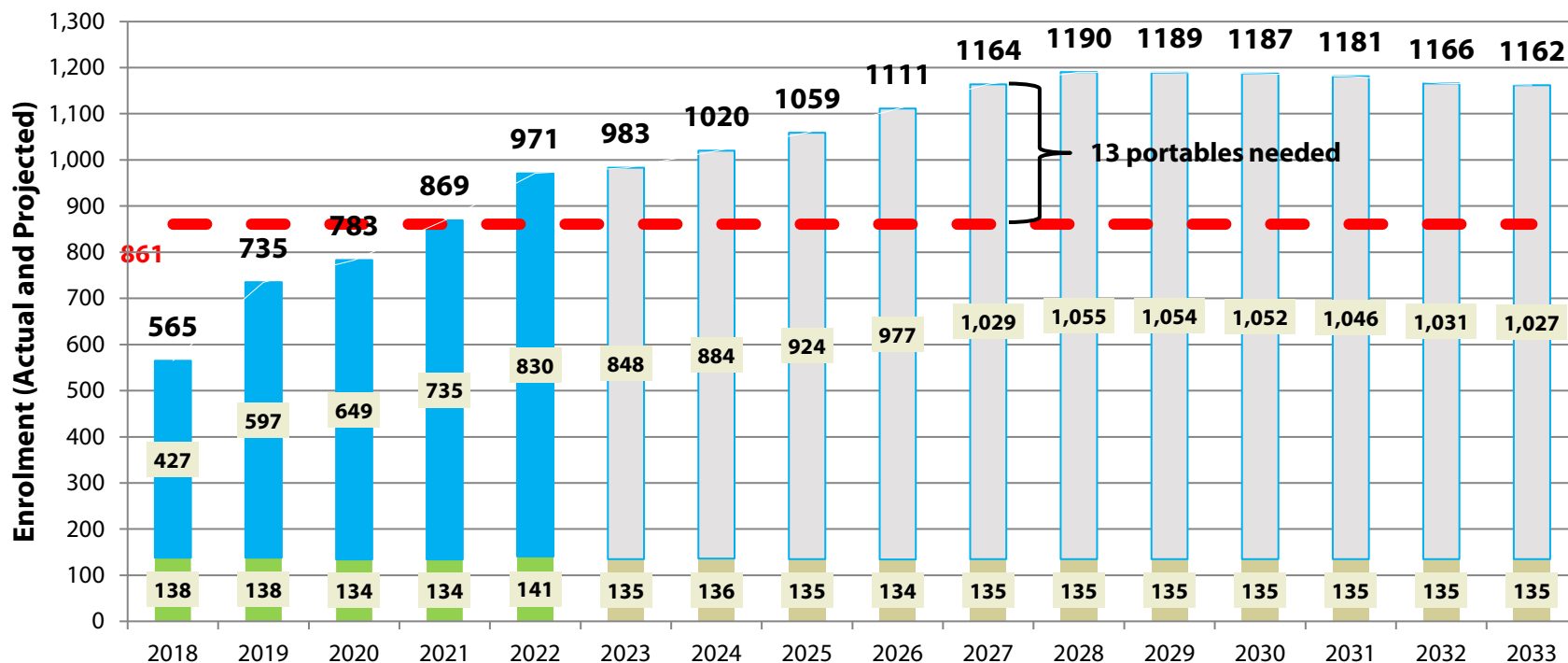
TDSB Actual Elementary Enrolment 1967-2021  
(Head Count)



Source: P20210528-HistoricalEnrolmentSummary.xlsx

# Context of Avondale PS & Elem Alt Sch

## Avondale PS and Elem Alt Sch- Historical and Projected Enrolment



**Grade Range:** JK-8

**Existing Programs:** Regular Track, Alternative

**TDSB Program/Partners:** Child Care

**Classrooms Available:** 38 = 32+6

**Building Capacity (2022):** 861 = 720 + 141 pupil places

**2022 Actual Enrolment (Oct 31):** 971 pupil places

**Current Building Utilization:** 113%


**Enrolment Projection:** Significant accommodation issues for the long-term

**Concerns:** Over-utilization, available space for portables and impact on program. 3 portable in 2022, 13 as soon as 2027

## Local Feasibility Study

- Studies in the LTPAS are approved by Central Accommodation Team (CAT) to commence Local Feasibility Team (LFT) work.
- The LFT;
  - Met in April, September, and October of 2022
  - Was comprised of local Trustees, Superintendents, Principals, Central TDSB Staff, and other support staff as required
  - Reviewed options to address accommodation issues associated with continued enrolment growth and over-utilization at the Avondale site.
  - The LFT determined that;
    1. Avondale Elem Alt Sch be relocated to Bayview MS. After looking at several possible solutions, staff considers Bayview MS to be the most viable due to its location and availability of space
    2. Give students in Grade 6-8, who have been redirected to Woodbine MS, an opportunity to return to Bayview MS.

## Program Area Review Process



**Local  
Feasibility  
Team (LFT)**

**April to October 2022**

- Studies in the LTPAS are approved by CAT to commence LFT work
- Central TDSB Staff process to develop and analyze feasible accommodation options
- CAT reviews LFT report and recommends approval to form a PART

✓ **Complete**



**Program Area  
Review (PART)**

**December 2022 to March 2023**

- Formal public process to provide opportunities for consultation and feedback
- Includes working meetings with parent representatives to review option(s), provide feedback and contribute new idea and a minimum of one public meeting
- Once PART has reached a decision, the Superintendent prepares report with recommendations and brings it to CAT for review



**Board  
Approval**

**Spring 2023**

- Board meeting for approval held in Spring of 2023
- Following Board's approval to make change, the affected Superintendents and Principals will notify staff and students and proceed with addressing details related to the transition
- Final decision is made by Trustees

# Role of the PART

## Role of the PART

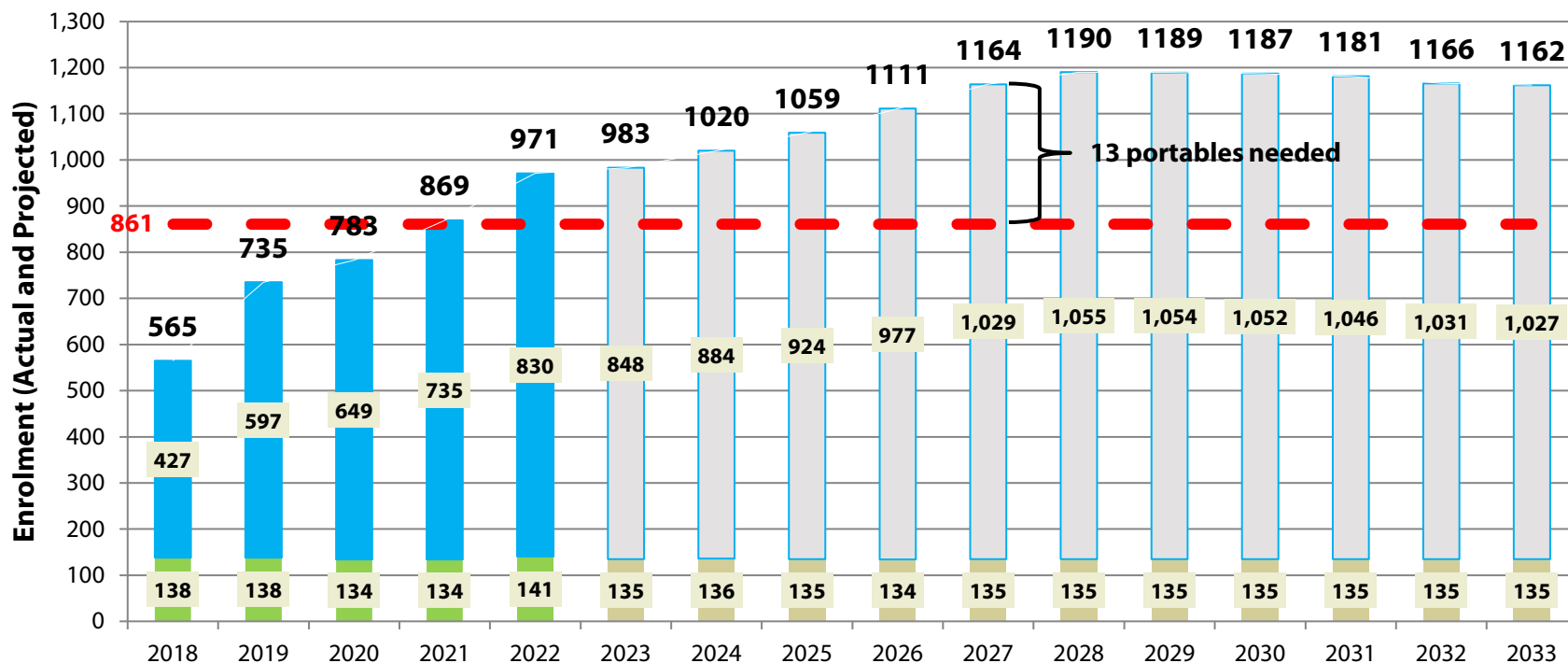
- Advisory Role
- The PART shall make recommendations to inform staff and Board
- PART recommendation(s) may be modified by staff and/or Board members

## Functioning of the PART

- The PART shall function by reaching **consensus** among members
- If consensus cannot be reached a vote shall occur
- Voting members: Principals, and Parent Representatives (1 vote from each school). The same representatives are expected to attend all working meetings.
- Trustees here to observe the PART's conversations. They do not vote.
- Quorum: If a school is not present, the Superintendent will represent the school

# Overview of Avondale PS & Elem Alt Sch

## Avondale PS and Elem Alt Sch- Historical and Projected Enrolment



**Grade Range:** JK-8

**Existing Programs:** Regular Track, Alternative

**TDSB Program/Partners:** Child Care

**Classrooms Available:** 38 = 32+6

**Building Capacity (2022):** 861 = 720 + 141 pupil places

**2022 Actual Enrolment (Oct 31):** 971

**Current Building Utilization:** 113%

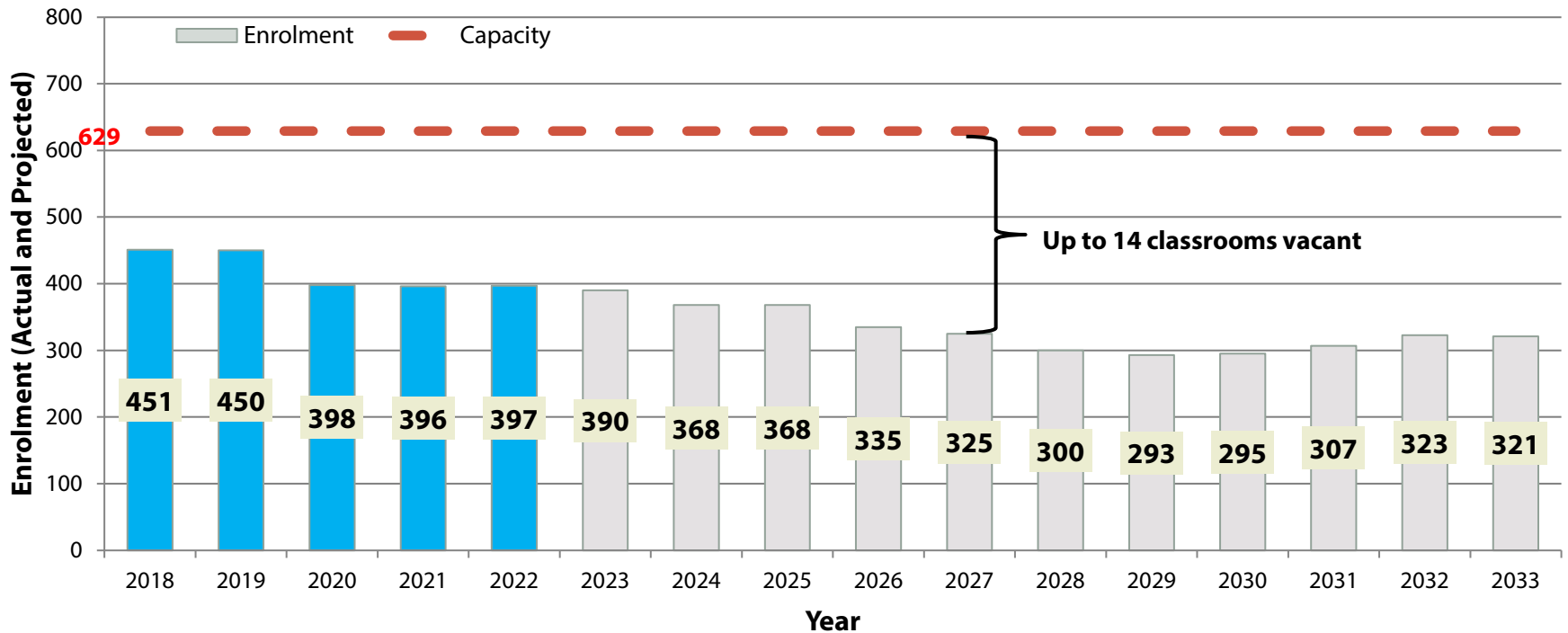
**Enrolment Projection:** Significant accommodation issues for the long-term

**Concerns:** Over-utilization, available space for portables and impact on program. 3 portables in 2022, 13 as soon as 2027



# Overview of Bayview MS

## Bayview MS - Historical and Projected Enrolment



**Grade Range:** Gr.6-8

**Existing Programs:** Regular Track, ASD Special Education

**TDSB Program/Partners:** Wilmington ES (Jan 2023)

**Total Classrooms Available:** 28

**Building Capacity (2022):** 629 pupil places

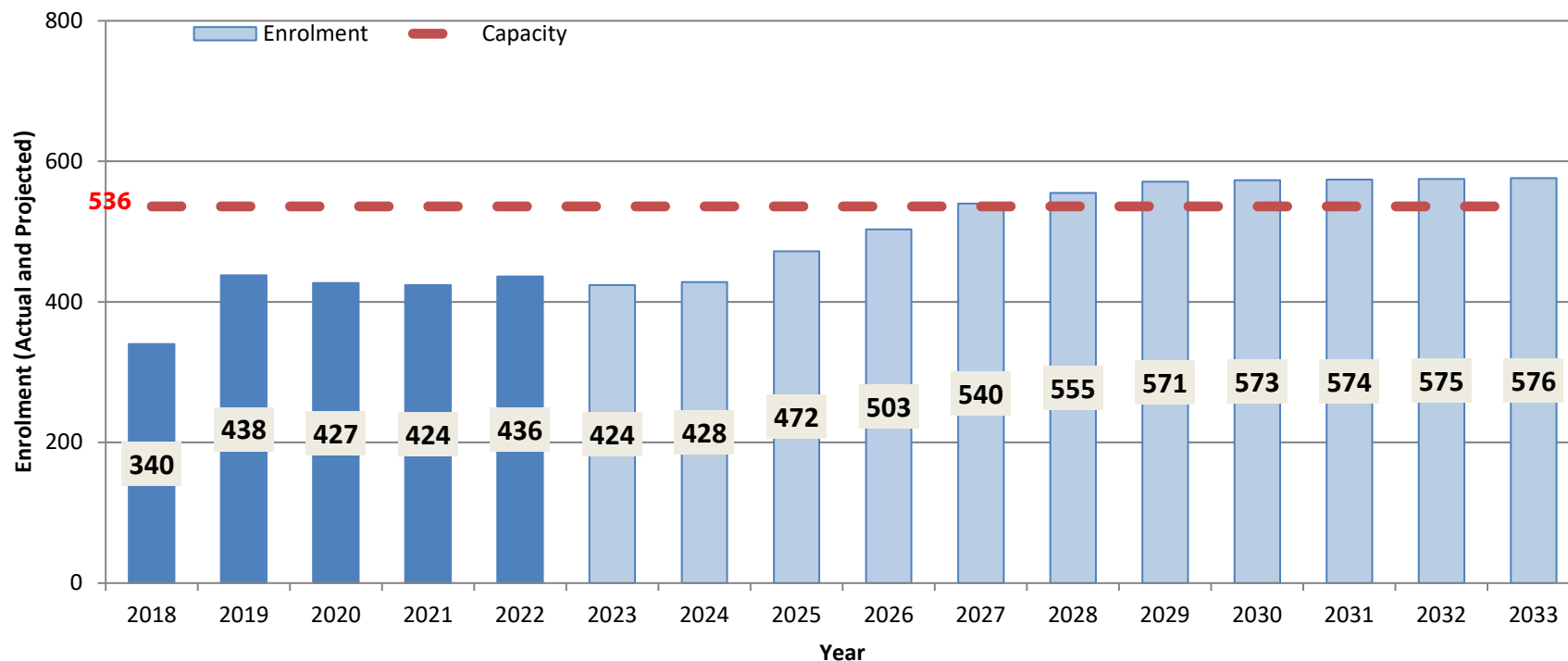
**2022 Actual Enrolment (Oct 31):** 404

**Current Building Utilization:** 63%

**2027 Enrolment Projection:** low enrolment, up to 14 classrooms vacant

# Overview of Crestview PS

## Crestview PS - Historical and Projected Enrolment



**Grade Range:** JK-5

**Existing Programs:** Regular Track, Beh Special Education

**TDSB Program/Partners:** Child Care (YMCA of Toronto)

**Total Classrooms Available:** 24

**Building Capacity (2022):** 536 pupil places

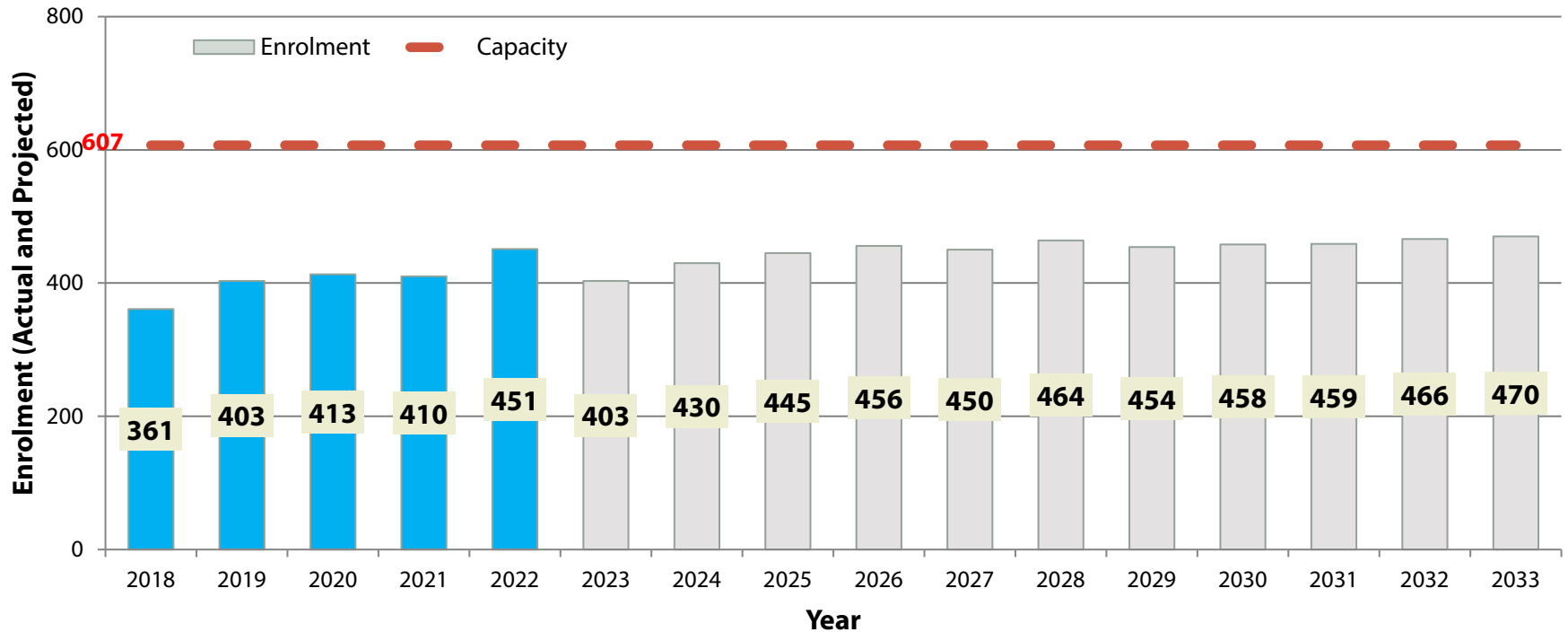
**2022 Actual Enrolment (Oct 31):** 377

**Current Building Utilization:** 81%

**2027 Enrolment Projection:** At capacity

# Overview of Woodbine MS

## Woodbine MS - Historical and Projected Enrolment



**Grade Range:** Gr.6-8

**Existing Programs:** Regular Track

**TDSB Program/Partners:** North East Secondary Alt School

**Total Classrooms Available:** 30

**Building Capacity (2022):** 607 pupil places

**2022 Actual Enrolment (Oct 31):** 607 pupil places

**Current Building Utilization:** 52%

**2027 Enrolment Projection:** 450

# Challenges with the Status Quo at Avondale PS and Bayview MS

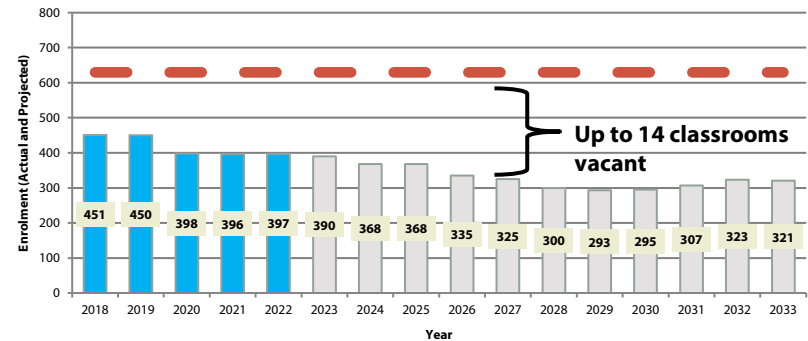
## Challenges:

- 1,110 students are too many for a elementary school site.
- Avondale is 5.4 acre site.
- Portables needed in the future at Avondale PS.
  - 3 portables greatly hinder program delivery and out door space.
  - 13 portables exceed the site's capacity.
- Significant surplus spaces exists at Bayview MS. Up to 14 classrooms vacant by 2027 and beyond
- The Ministry requires school boards to balance enrolments amongst schools before asking for new construction.
- Without balancing enrolments, the Ministry will not likely approve;
  - A new JK-5 school near Bessarion Subway Station.
  - Any future addition and or re-build of older schools and buildings in the area.

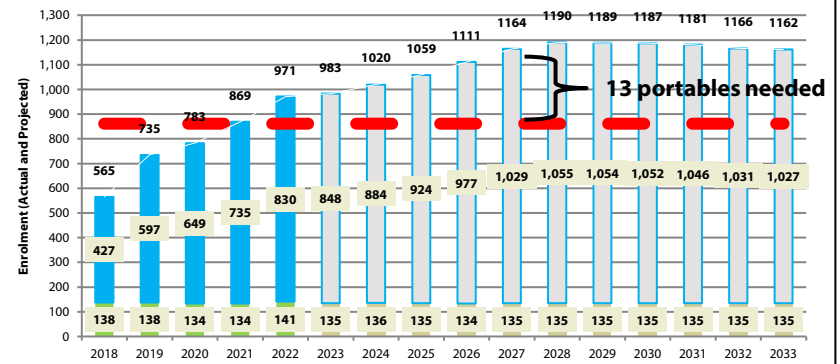


Imagery ©2022 CNES / Airbus, First Base Solutions, Maxar Technol

Bayview MS - Historical and Projected Enrolment



Avondale PS and Elem Alt Sch- Historical and Projected Enrolment



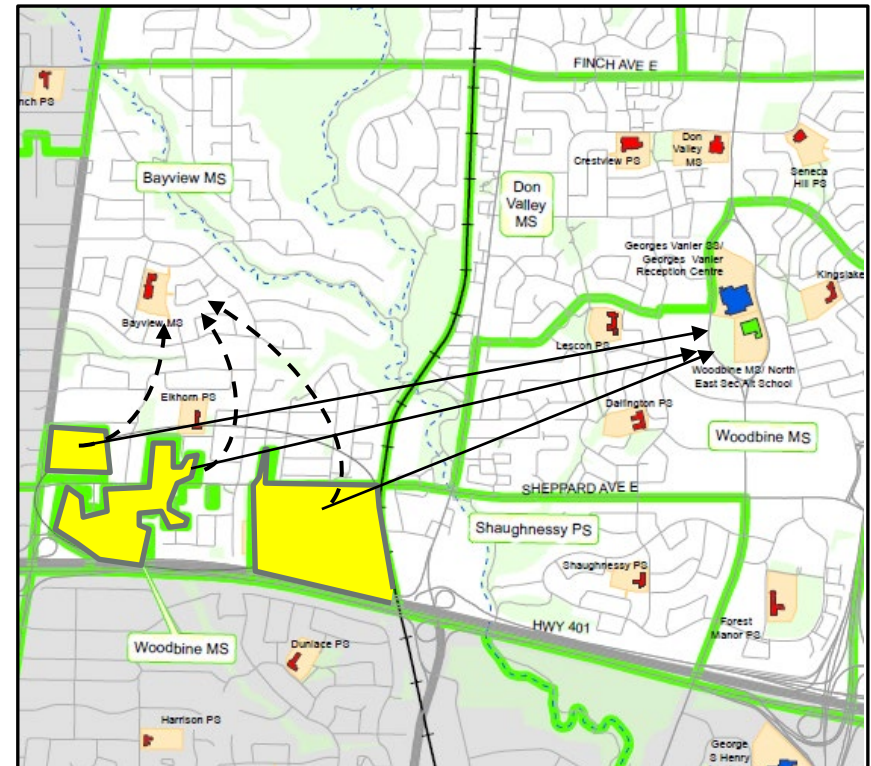
## Staff Recommended Scenario for Discussion

## Woodbine MS boundary change to Bayview MS

- This option also includes giving students in Grade 6-8, who have been redirected to Woodbine MS, an opportunity to return to Bayview MS.

Grade 6 to 8 Students to Bayview MS	2022	2027	2032
Currently Attending Woodbine	18	20	21
Currently Not Attending Woodbine	42	63	65
Total	60	83	86

- Currently there are about 15 Grade 5 students at Crestview who could decide to attend Bayview MS



# Staff Recommended Scenario for Discussion

## Avondale Elem Alt School relocates to Bayview MS

- Staff is recommending that Avondale Elementary Alternative School be relocated to Bayview MS. After looking at several possible solutions, staff considers Bayview MS to be the most viable due to its location and availability of space.

### **Opportunities of Relocating Avondale EA Sch to Bayview MS; and ending Redirection to Woodbine:**

- At 2.2 km between schools (3.1 km walking), Bayview MS is the closest school. Existing familiarity to Bayview school and neighbourhood. Bayview MS hosted Avondale PS and EA Sch between 2015 and 2019. Ends redirection to Woodbine for students from new residential developments since 2002
- Access to similar program spaces such as Science labs, Design & Tech rooms, large gymnasium, although not as new as at the Avondale building.
- Enough space to keep Avondale EA School in tact as a JK-8& end redirection to Woodbine MS.
- No construction or renovation required. Age and grade appropriate indoor and outdoor spaces already exist at Bayview MS.
- Improves the overall utilization at Bayview MS, and improves the possibility of a new CTL school being approved.
- The closest school with capacity.
- The option is likely to lose the least amount Avondale EA students:
  - The second largest number of Avondale EA (17) students come from the Bayview MS area. First is the Avondale PS attendance area at 59.

### **Challenges:**

- The loss of Avondale EA students.
- For Crestview graduates, friendships and peers may break as most graduates go to Woodbine for Gr.6.
- Creating the expectation of attending Earl Haig SS as peer groups and friendships forms with Bayview MS students.
- Projected 7 portables remain needed Avondale PS, although not 13 if nothing is done.
- Age appropriate Before and After programming for Avondale EA students at Bayview.

# Other Sites and Options Considered by the LFT

### Considerations:

- Available space in the receiving school today, and in the future.
- Avoid possible increasing loss of current Avondale EA students with relocation sites further and further way from current location.
- Are age and appropriate program spaces available? Science, Art, Design & Tech, gym, FDK spaces, both indoor and outdoor.
- Maintaining peers and friendships. Consistent pathway from JK to Gr.12.
- Maintaining JK-8 model when already existing.
  - Avoid creating new transitions (such as splits at Gr.5 and 6) between schools.
- Ending redirections, not creating more.
- Timing, when will a new school or addition be built?
  - Ministry approval requires removing surplus spaces in this area of schools, and also being recognized as a higher priority by decision makers.
- Minimize the use of portables.

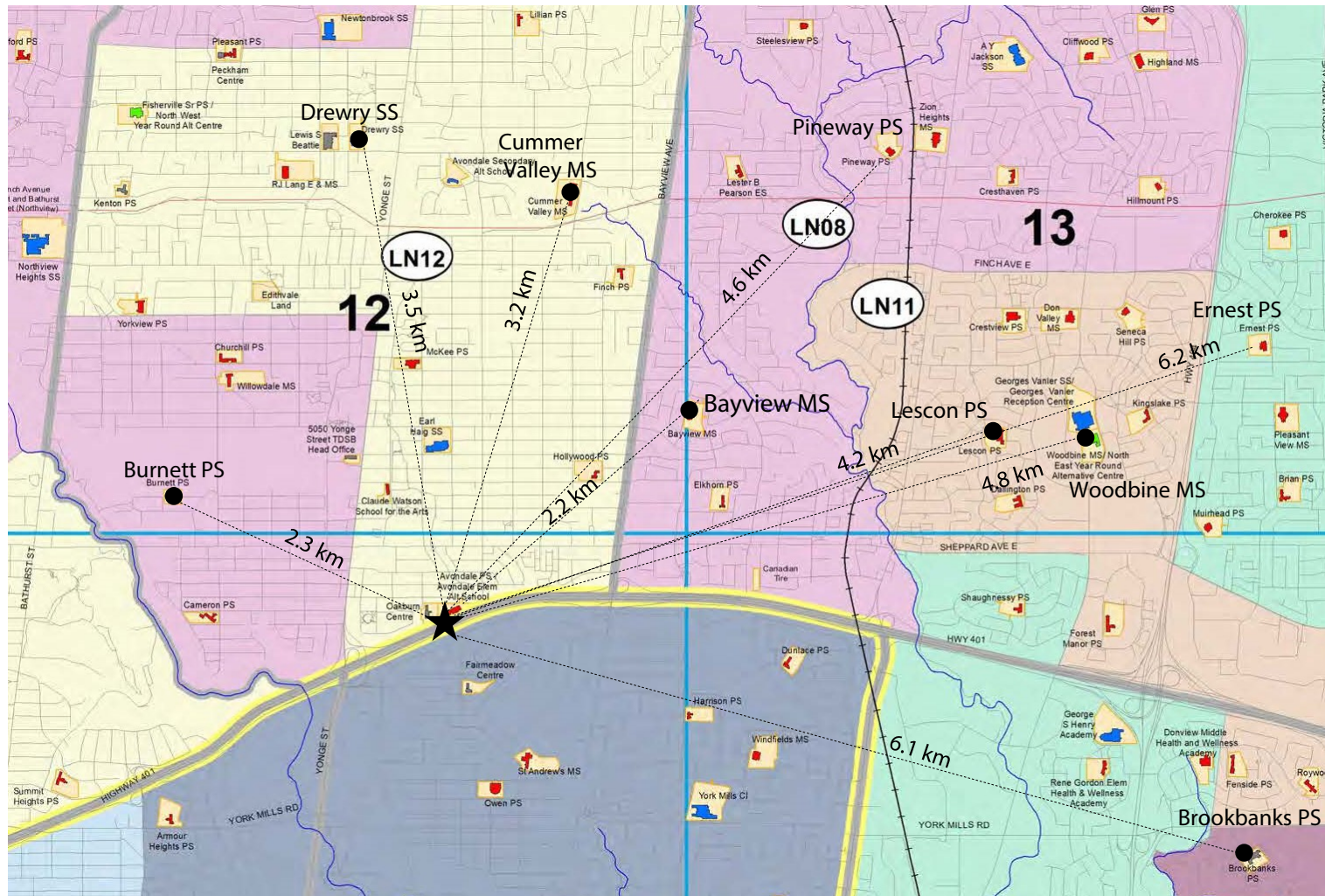
1. Status Quo
2. Avondale EA to Bayview MS
3. Avondale EA to Woodbine MS
4. Avondale EA to Cummer Valley MS
5. Gr.6-8 Avondale PS & EA to Bayview MS
6. Gr.6-8 Avondale PS & EA to Woodbine MS
7. End Area 4 redirections\* for Gr.6-8. Proposed new CTL PS\*\* feeds to Bayview MS, Avondale EA at Bayview MS
8. End Area 4 redirections\* for Gr.6-8. Proposed new CTL PS\*\* feeding to Bayview MS, Avondale EA at Woodbine MS
9. Re-redirect from Crestview PS and Woodbine MS to Bayview as a JK-8 without local JK-5 boundary. No future new CTL. Avondale EA at Crestview PS
10. Avondale EA at Pineway PS
11. Avondale EA at Ernest PS

\*Since 2002, students from new residential developments in an area from Sheppard Ave East to Hwy 401 and between Bayview Ave and Leslie St are redirected away from Elkhorn PS, Bayview MS and Earl Haig SS to Crestview PS, Woodbine MS and Georges Vanier SS.

\*\* The TDSB has secured a 1.8 acre site (south of the Bessarion subway station) for a JK-5 school



## Other Sites and Options Considered by the LFT





### Other Sites and Options Considered by the LFT

**New CTL School\*\*** TDSB elementary school (JK-5) yet to be built;

- If approved, the actual school would not be opened in time to address the pressures at Avondale PS.
- Approval requires removing surplus spaces in this area of schools, and also being recognized as a higher priority by decision makers.

**Claude Watson School of the Arts** (130 Doris Avenue);

- Gr.3-8 specialized arts school with specialized spaces
- Only 54 pupil places available.

**Drewry SS;**

- Drewry Secondary School is a small special needs school providing academic and life skills courses.
- Large oversized specialized rooms.
- Enrolment varies between 80 and 120. Adjusted for Special Education uses, the school capacity is 138 pupil places.

Considerations:

- Available space in the receiving school today, and in the future.
- Avoid possible increasing loss of current Avondale EA students with relocation sites further and further way from current location.
- Are age and appropriate program spaces available? Science, Art, Design & Tech, gym, FDK spaces, both indoor and outdoor.
- Maintaining peers and friendships. Consistent pathway from JK to Gr.12.
- Maintaining JK-8 model when already existing.
  - Avoid creating new transitions (such as splits at Gr.5 and 6) between schools.
- Ending redirections, not creating more.
- Timing, when will a new school or addition be built?
  - Ministry approval requires removing surplus spaces in this area of schools, and also being recognized as a higher priority by decision makers.
- Minimize the use of portables.

\*\* Canadian Tire Lands - The TDSB has secured a 1.8 acre site for a JK-5 school. The site is located south of the Bessarion Subway Station

### Other Sites and Options Considered by the LFT

**Lescon PS**, JK-5 (34 Lescon Road), Regular and ASD Spec Ed Programs, Lumenus ECPP, capacity is 447 pupil places;

- Projected 2032: 244 students leaving 203 pupil places available.

**Oakburn Centre** (15 Oakburn Crescent)

- Fully utilized operations centre with maintenance yard that cannot be easily replicated elsewhere.

**Silview PS** (24 Silview Dr., Avondale Alternative Secondary School with Caring and Safe Schools)

- All classrooms are occupied

**Brookbanks PS** (217 Brookbanks Drive)

- Leased to Crestwood Preparatory College Inc, lease expire is August 31, 2026

**Burnett PS** (21 Eddfield Ave.)

- Leased to Prestige School; lease expires June 30, 2024 – 12 month notice
- Building rated at 173 pp

#### Considerations:

- Available space in the receiving school today, and in the future.
- Avoid possible increasing loss of current Avondale EA students with relocation sites further and further way from current location.
- Are age and appropriate program spaces available? Science, Art, Design & Tech, gym, FDK spaces, both indoor and outdoor.
- Maintaining peers and friendships. Consistent pathway from JK to Gr.12.
- Maintaining JK-8 model when already existing.
  - Avoid creating new transitions (such as splits at Gr.5 and 6) between schools.
- Ending redirections, not creating more.
- Timing, when will a new school or addition be built?
  - Ministry approval requires removing surplus spaces in this area of schools, and also being recognized as a higher priority by decision makers.
- Minimize the use of portables.

### Other Sites and Options Considered by the LFT

#### Schools Within 9km of Avondale with at least 140 Spaces Available in 2022, 2026, and 2031

School Name	Distance from Avondale (direct line – km)	Grade Range	Enrolment (Oct 31, 2022)
Downsview SS	7.1	9-12	458
Newtonbrook SS	4.3	9-12	802
Drewry SS	3.5	9-12	76
Ernest PS	6.2	JK-5	203
Lescon PS	4.2	JK-5	242
Fisherville Sr PS	4.3	7-8	208
Northview Hts SS	4.0	9-12	1,568
Georges Vanier SS	4.8	9-12	877
Cummer Vly MS	3.2	6-8	343
Bayview MS	2.2	6-8	404
Calico PS	8.7	JK-5	229
Pineway PS	4.6	JK-5	127
Pleasant View MS	6.2	6-8	274
McKee PS	1.8	JK-5	603
Sheppard PS	7.3	JK-5	171

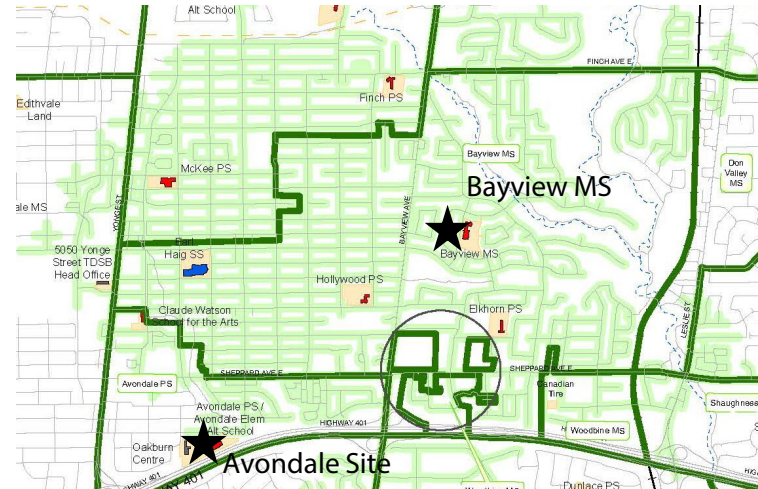
#### Considerations:

- Available space in the receiving school today, and in the future.
- Avoid possible increasing loss of current Avondale EA students with relocation sites further and further way from current location.
- Are age and appropriate program spaces available? Science, Art, Design & Tech, gym, FDK spaces, both indoor and outdoor.
- Maintaining peers and friendships. Consistent pathway from JK to Gr.12.
- Maintaining JK-8 model when already existing.
  - Avoid creating new transitions (such as splits at Gr.5 and 6) between schools.
- Ending redirections, not creating more.
- Timing, when will a new school or addition be built?
  - Ministry approval requires removing surplus spaces in this area of schools, and also being recognized as a higher priority by decision makers.
- Minimize the use of portables.

# Discussion

- Comments/Questions
  - Questions from schools?
- Other options
  - Relocate Avondale PS Grade 6 to 8 to Bayview, with Avondale Alt EA remaining

3.2 km Walking Distance from Bayview MS and Intermediate Attendance Area



### Opportunities:

- Improves the utilization at Bayview MS.
- At 3.1 km walking between schools, Bayview MS is the closest MS to the Avondale site.
- Bayview MS has the largest number of Avondale EA Gr.6-8 students (7) originating from within the Bayview MS attendance area after the Avondale PS attendance area.
- Removes the need for portables at Avondale PS, but the school is operating at 100% capacity.

### Challenges:

- Creates a transition for approximately 300 Gr.6-8 Avondale PS students
- Bayview MS is at capacity and hinders ability to accommodate graduates of the future JK-5 CT Lands PS. Portables will be needed. Expectation of attending Earl Haig SS as peer groups and friendships forms with Bayview MS students.
- The densest population portion of Avondale PS attendance area is beyond the 3.2 walking distance to Bayview distance causing significant student transportation costs (TTC). 90 (6 EA, 84 PS) Gr. 6-8 students for 2021.

# Emails Received

5 messages received from 4 individuals:

- 4 messages oppose the relocation of Avondale Elementary Alt Sch to Bayview MS
- 1 message asks a question about registering at Crestview PS and the impact of this PART

Key messages observed:

- Avondale EA students are local students and being treated unfairly.
- The relocation of Avondale EA will not achieve the required reduction at Avondale PS because parents will opt to remain at Avondale PS.
- Friendships amongst students will be broken.
- 'A culture for student and staff well being'; Bayview MS is not a location to achieve this.
  - While previously at Bayview and Avondale staff were conflicted, parking and traffic issues.
- Relocation is a violation of TDSB Alternative School Policy, Strategic Plan, and LTPAS Guiding Principles.
- TDSB is to be blamed for creating the situation.


Suggestions:

- Relocate the senior grades of Avondale PS elsewhere.
- Utilize space at the Oakburn Centre.
- Build another school (podium or other).

### Next Steps

- Next meeting – Are we ready for a Public Meeting?
- Getting information back to your school
- Getting information from the community to PART membership.
  - Email [accommodationreviews@tdsb.on.ca](mailto:accommodationreviews@tdsb.on.ca)
  - Speak or email your principal, superintendent, trustee

### Meeting Dates:



Date	Time	Meeting Type
Tuesday, December 20, 2022	6:00 p.m. to 7:30 p.m.	Working PART Meeting #2
Thursday January 12, 2023	6:00 p.m. to 7:30 p.m.	Working PART Meeting #2
Tuesday January 24, 2023 (Proposed)	6:00 p.m. to 7:30 p.m.	Working PART Meeting #3
Thursday February 9, 2023 (Proposed)	6:00 p.m. to 7:30 p.m.	Public Meeting
TBD – February March, 2023	6:00 p.m. to 7:30 p.m.	Working PART Meeting #4

## **Good Night and Thank you:**

We value your time and respect your thoughts.

Thank you for participating in this Program Area Review Team by representing your school and giving us your perspectives on how to make your school and our school system better.

