

Armour Heights PS Program Area Review Team

Committee Meeting #1

March 4, 2021



Agenda

6:30 p.m. to 8:00 p.m.

1.	Welcome and Introductions
2.	Meeting Norms
3.	Setting the Context
4.	Program Area Review Process
5.	Initial Staff Report and Recommendations
6.	Discussion, Questions and Comments
7.	Closing

Land Acknowledgement

We acknowledge we are hosted on the lands of the Mississaugas of the Anishinaabe, the Haudenosaunee Confederacy and the Wendat. We also recognize the enduring presence of all First Nations, Métis and the Inuit peoples

Meeting Norms

- Meetings will be chaired by Ron Felsen, Superintendent
- Members will arrive on time and we will ensure that the meeting ends at the scheduled time
- The chair will follow the meeting agenda
- Members will treat each other, and the opinions of each other, with respect
- Meaningful information sharing comes through dialogue and collaboration

Program Area Review Team (PART) Members

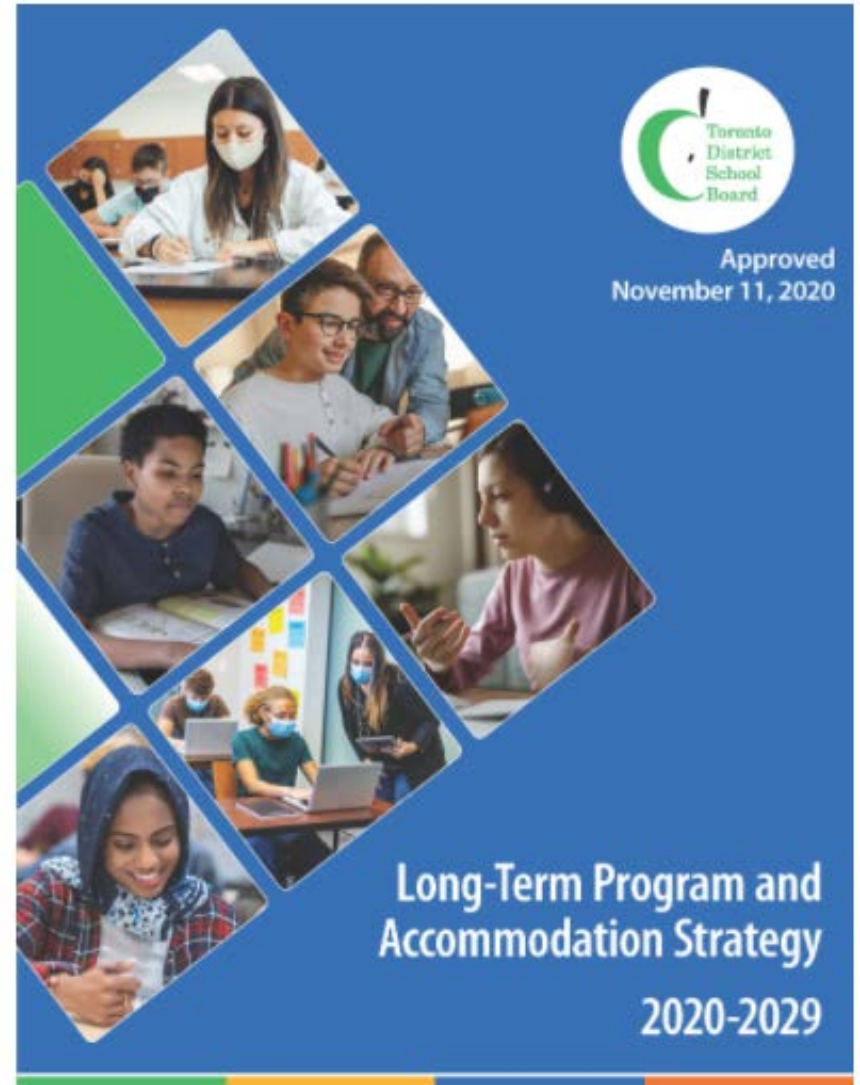
School/Organization	Name	Position
Ward 8	Shelley Laskin	Trustee
Ward 11	Rachel Chernos-Lin	Trustee
Armour Heights PS	Belinda Longe Laura Berry	Principal Parent representative
St. Andrew's MS	Jessica Feldberg Zakia Nabbus	Principal Parent representative
Ledbury Park EMS	Kari Hudson Jason Rosen	Principal Parent representative
Learning Network 4	Denise Humphreys	Superintendent
Learning Network 6	Ron Felsen	Superintendent, chair

Setting the Context: why are we here?

- Members of the Armour Heights PS community has been asking to expand the grade range at Armour Heights for many years
- Armour Heights PS is currently the only feeder of St. Andrew's to feed in at Gr. 7, the other feeders come in Gr. 6
- Armour Heights has previously been over capacity but is now starting to see a decrease in enrolment that gives it the space to be able to consider a grade range expansion
- Shared boundary has been identified as part of our Long Term Program and Accommodation Strategy

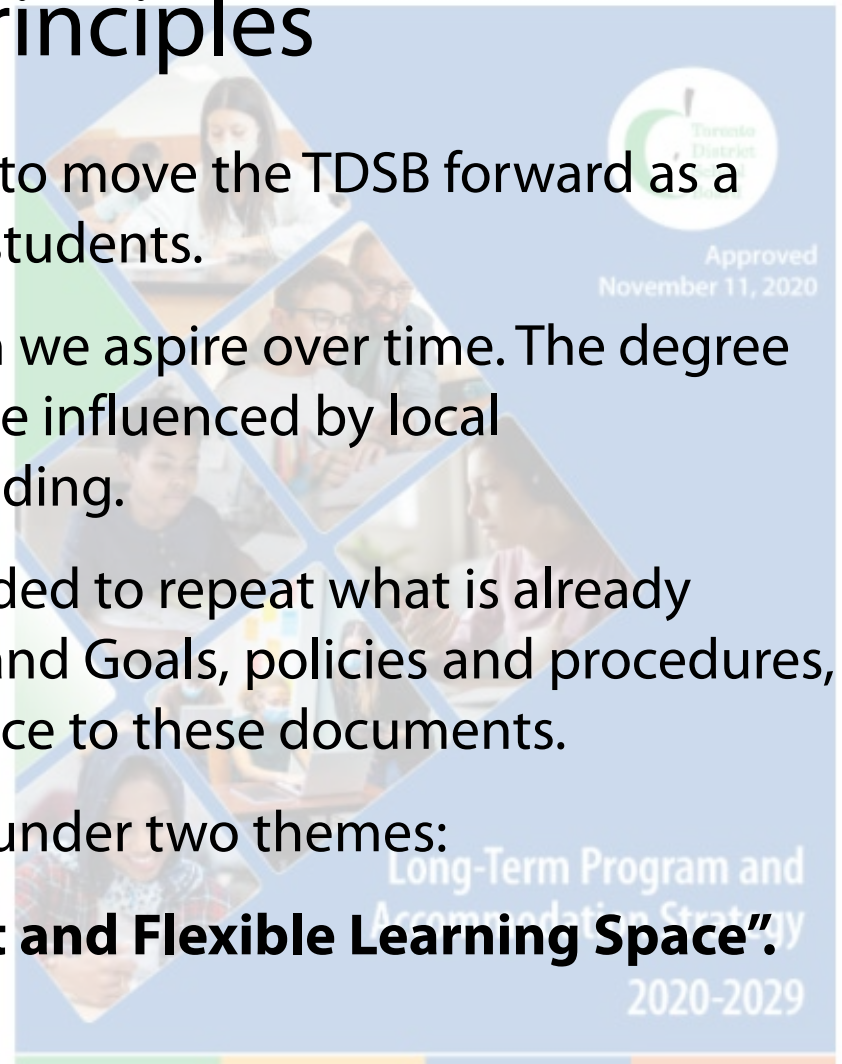
Long-Term Program and Accommodation Strategy

- Most recent Long-Term Program and Accommodation Strategy (LTPAS) Document was approved on November 11, 2020.
- The document identifies a number of studies to be undertaken to resolve existing and future accommodation pressures in the City.
- Studies identified in the 2020-21 Annual Planning Document are being undertaken.



Guiding Principles

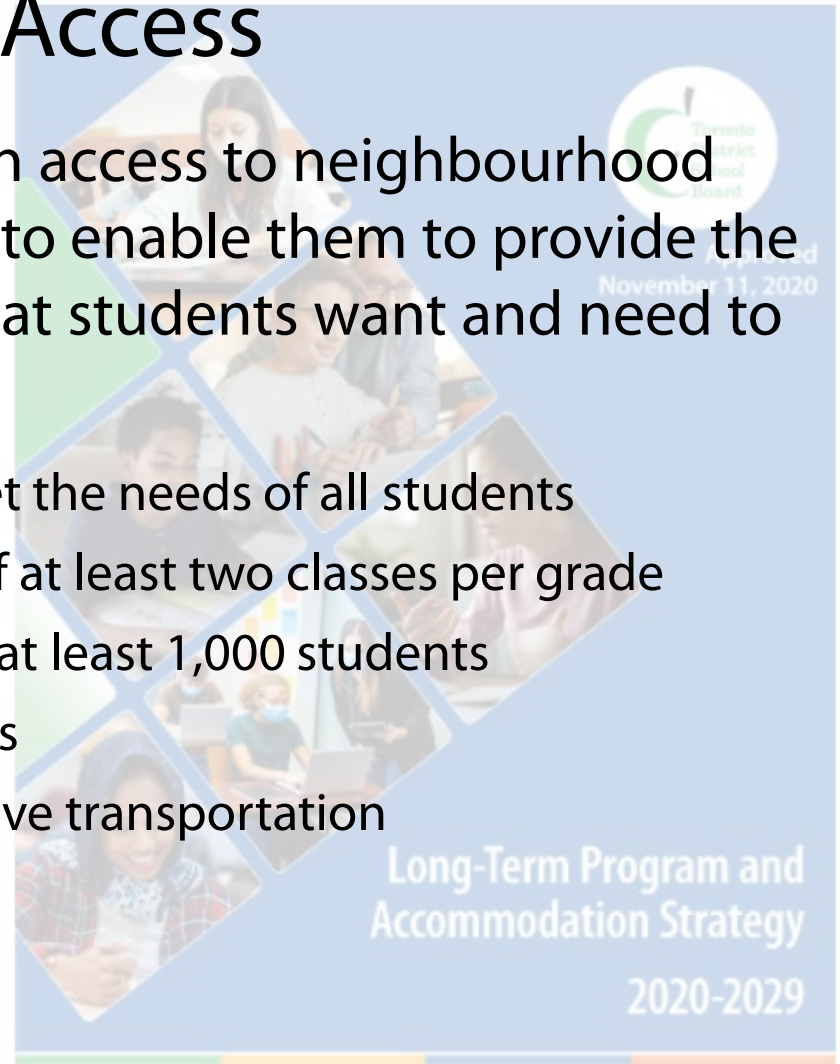
- The guiding principles are intended to move the TDSB forward as a system to better meet the needs of students.
- They represent broad goals to which we aspire over time. The degree to which they can be achieved will be influenced by local circumstances and availability of funding.
- The guiding principles are not intended to repeat what is already found in the TDSB’s Mission, Values and Goals, policies and procedures, but to provide supplemental guidance to these documents.
- The guiding principles are grouped under two themes:
 - **“Equity of Access” and “Efficient and Flexible Learning Space”.**



Equity of Access

These principles seek to strengthen access to neighbourhood schools that are of a sufficient size to enable them to provide the range of program opportunities that students want and need to be successful.

1. Neighbourhood schools that meet the needs of all students
2. Optimal elementary school size of at least two classes per grade
3. Optimal secondary school size of at least 1,000 students
4. Consistent attendance boundaries
5. School locations that support active transportation
6. Minimal transitions
7. Balanced enrolment across tracks



Efficient and Flexible Learning Space

These principles promote flexibility to enable us to adapt to a dynamic and changing city while efficiently managing space.

8. Optimal utilization rate of 90%
9. Minimal use of portables
10. Flexible buildings and sites
11. Different models of school organization



Current studies in the LTPAS

- The following studies are the focus of this Program Area Review Team exercise:
 - Grade Change Study: Explore a grade expansion from JK-6 to JK-8 at Armour Heights PS. Graduating students are currently directed to St. Andrew's MS at Grade 7.
 - We are also looking to address a current shared junior boundary between Ledbury Park PS and Armour Heights PS.

The Program Area Review Team can identify additional issues or ideas

Program Area Review Process

Central Accommodation Team (CAT) Project Launch – January 2021

- Studies in the LTPAS are approved by CAT to commence Local Feasibility Team work

Local Feasibility Team (LFT) – January – February 2021

- Once approval is received from CAT, an LFT is formed.
- LFT is composed of directly affected superintendents, principals, trustees, and other central staff as required.
- LFT meets to review data and discusses impacts of any proposed changes.
- LFT agrees on recommendation and reports back to CAT.

Program Area Review Team (PART) - March 2021

- CAT reviews LFT report and recommends approval to form a PART.
- PART members review data, discuss impacts, and make a recommendation to proceed or not to proceed with any change.
- One of the PART meetings shall be a community meeting to receive broader feedback.
- Once PART has reached decision, superintendent prepares report with recommendations and brings it to CAT for review.

Board of Trustees

- After considering the committee's recommendations, central staff shall present its own recommendations to the Board of Trustees for approval.
- Following Board's approval to make change, the affected Superintendents and Principals will notify staff and students and proceed with addressing details related to the transition.

Step 1



Step 2



Step 3

(we are here)



Step 4

Program Area Review Process

Meeting Dates:

PART Working Meeting #1: Thursday March 4th, 2021 (6:30-8pm)

PART Public Meeting #1: Thursday March 18th, 2021 (6:30-8pm)

PART Working Meeting #2: March 23rd, 2021 (6:30-8pm)

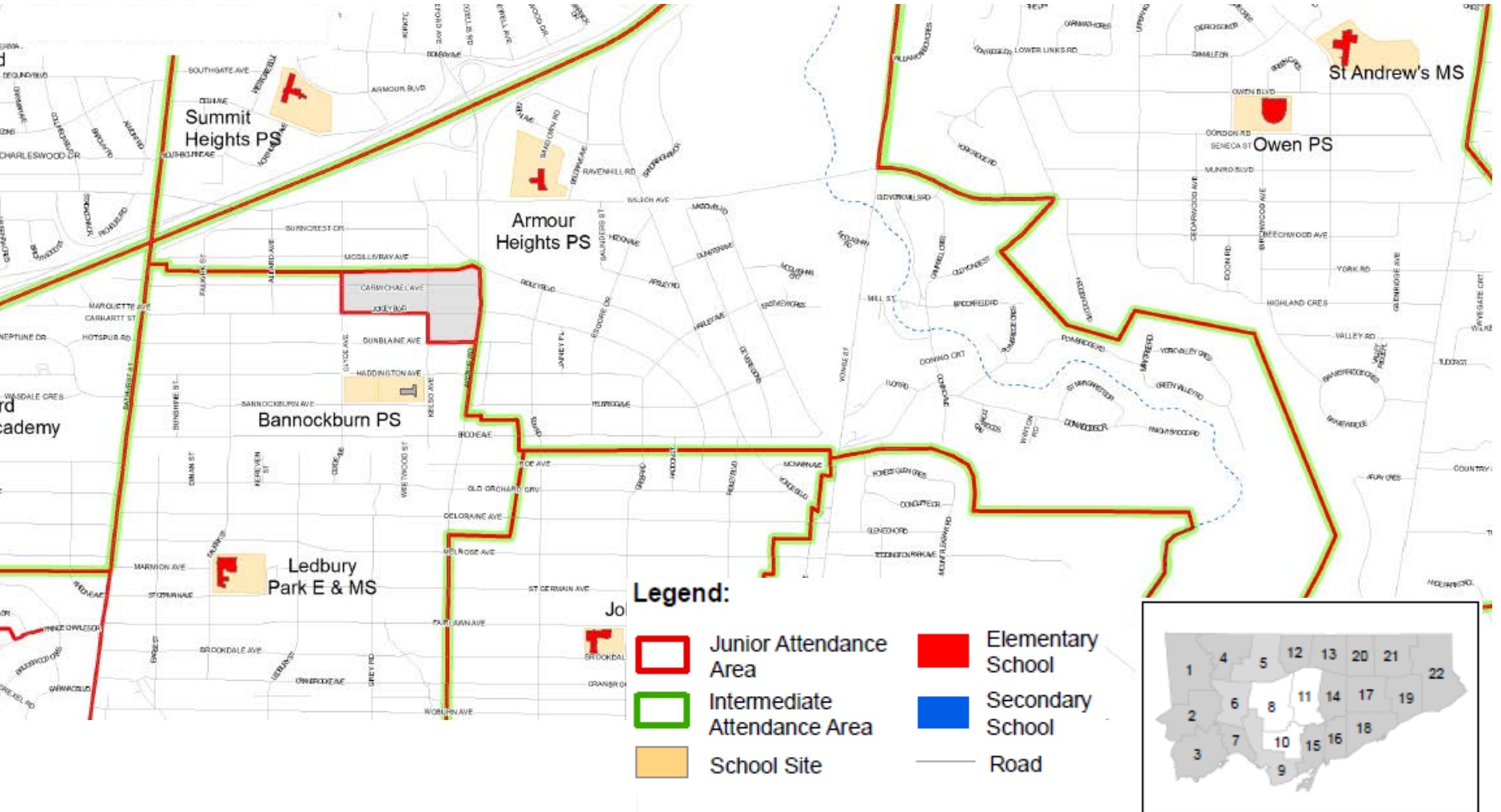
Role of the PART:

- Advisory Role
- The PART shall make recommendations to inform staff and Board
- PART recommendation(s) may be modified by staff and/or Board members

Functioning of the PART:

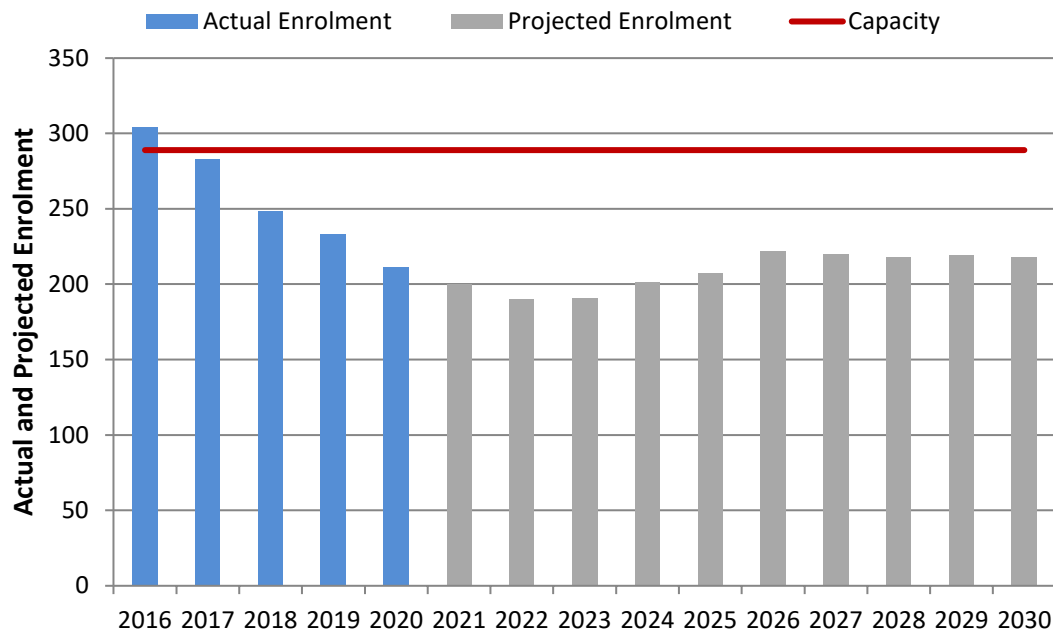
- The PART shall function by reaching **consensus** among members
- If consensus cannot be reached a vote shall occur
- Voting members: Principals and School Council Chairs/Representative (1 from each school). The same parent representatives are expected to attend all working meetings.
- PART to define quorum, voting procedure and process to be followed in the event of tie vote

Map of Schools in the Program Area Review



Current Situation – Armour Heights

Armour Heights PS



Armour Heights PS
JK-Grade 6 (English track)

Current School Capacity: 289

2020/21 Enrolment (Oct. 31 2020): 211

Current Building Utilization: 73%

2020/21 Optional Attendance Status: Closed

Existing Permanent Classroom Spaces: 16

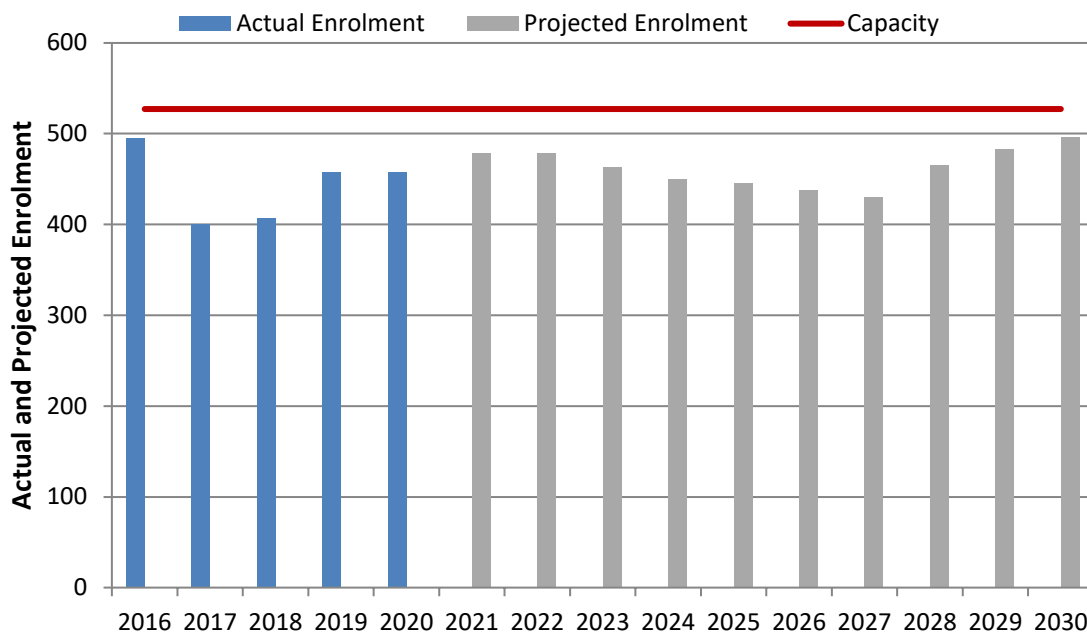
Programs: Autism (1 classroom)

Other Users: Childcare (2 classrooms)

	2021	2022	2023	2024	2025	2026	2027	2028	2029	2030
Enrolment	200	190	191	201	207	222	220	218	219	218
Utilization	69%	66%	66%	70%	72%	77%	76%	75%	76%	75%
Classroom Surplus/ Deficit	+2	+2	+3	+2	+2	+2	+2	+2	+2	+2

Current Situation – St. Andrew's MS

St. Andrew's MS



St. Andrew's MS

Grade 6 – 8 (English track)

Current School Capacity: 527

2020/21 Enrolment (Oct. 31 2020): 458

Current Building Utilization: 87%

2020/21 Optional Attendance Status: Limited

Existing Permanent Classroom Spaces: 23

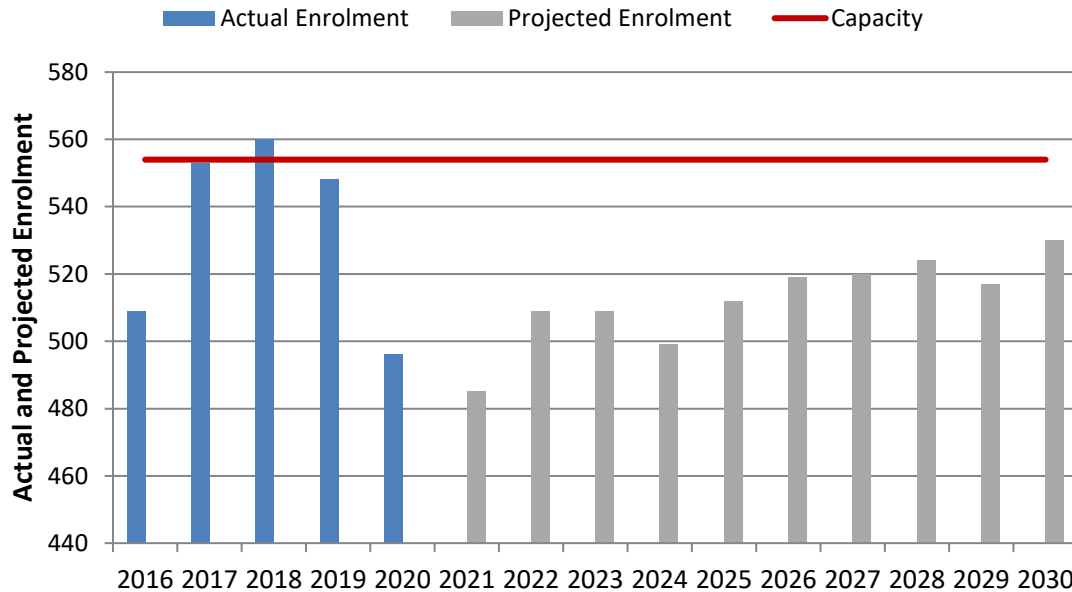
Programs: Gifted (6 classrooms)

Other Users: N/A

	2021	2022	2023	2024	2025	2026	2027	2028	2029	2030
Enrolment	479	479	463	450	446	438	430	465	483	496
Utilization	91%	91%	88%	85%	85%	83%	82%	88%	92%	94%
Classroom Surplus/ Deficit	+3	+2	+2	+3	+4	+4	+4	+3	+3	+2

Current Situation – Ledbury Park EMS

Ledbury Park EMS



Ledbury Park EMS

Grade JK – 8 (English track)

Current School Capacity: 554

2020/21 Enrolment (Oct. 31 2020): 458

Current Building Utilization: 90%

2020/21 Optional Attendance Status: Closed

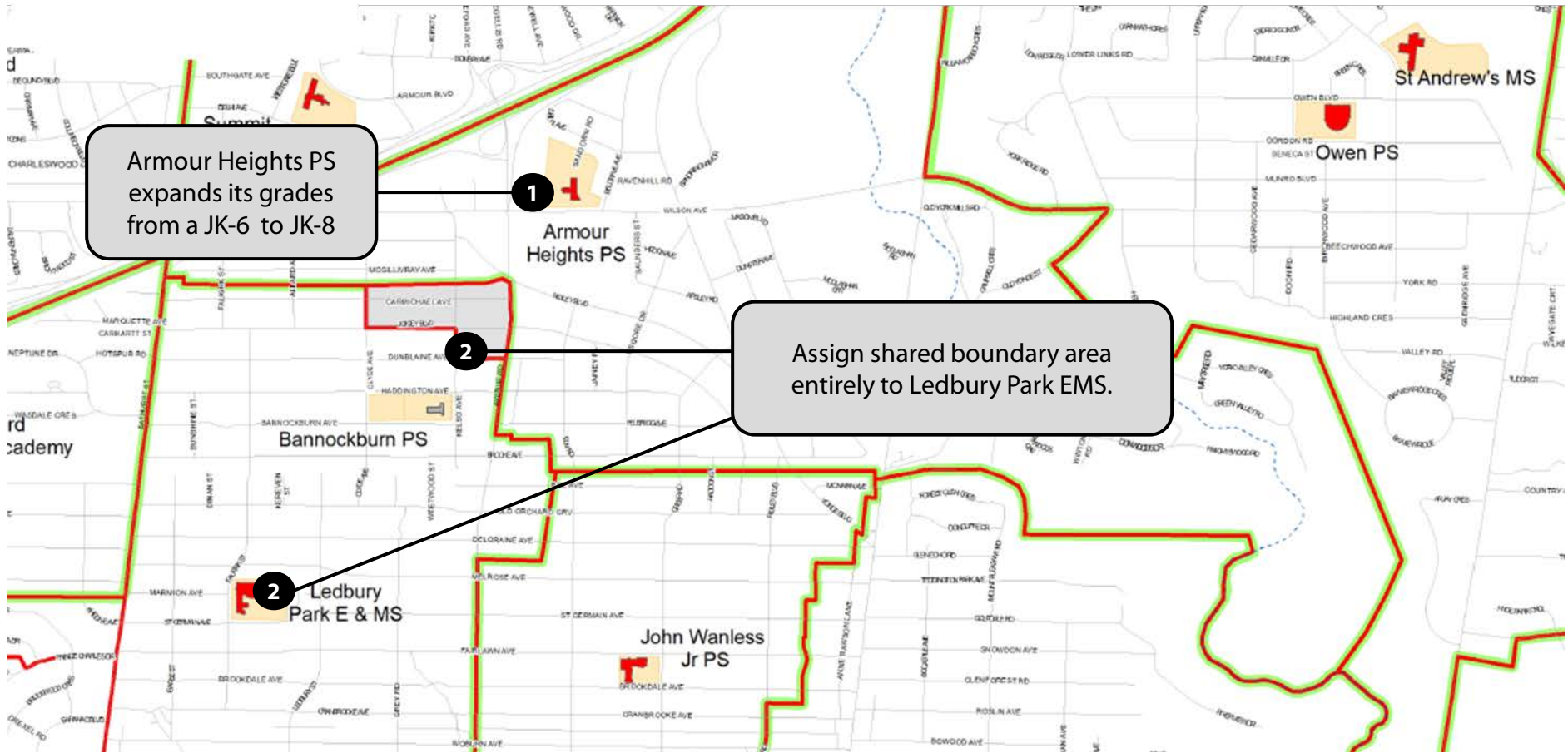
Existing Permanent Classroom Spaces: 27

Programs: Autism (1 classroom)

Other Users: Childcare (1 classroom)

	2021	2022	2023	2024	2025	2026	2027	2028	2029	2030
Enrolment	485	509	509	499	512	519	520	524	517	530
Utilization	87%	92%	92%	90%	92%	94%	94%	95%	93%	96%
Classroom Surplus/ Deficit	+2	+2	+2	+2	+1	+2	+2	+2	+2	+2

Initial Staff Recommendation for Discussion

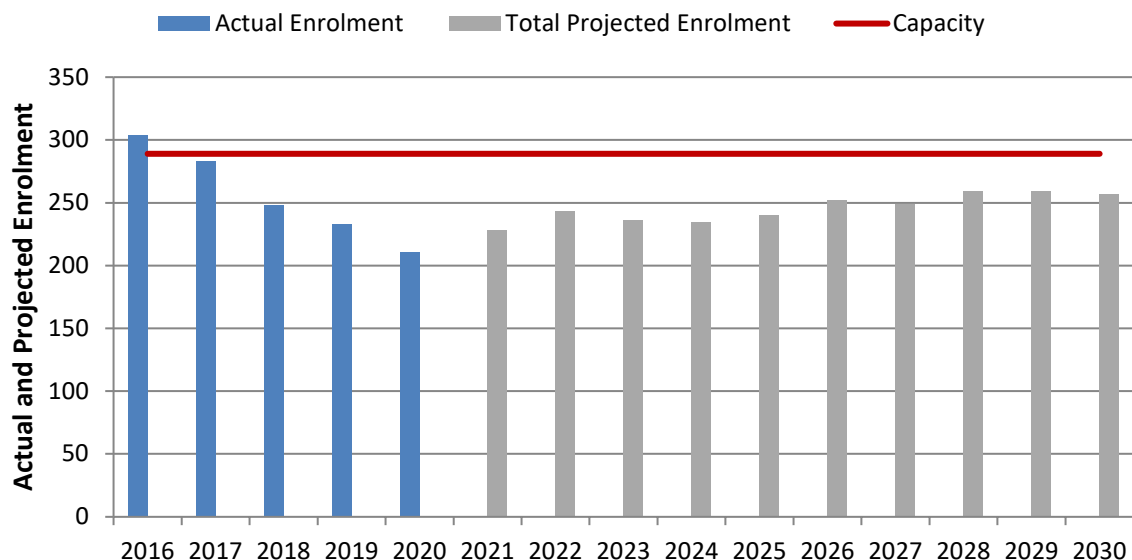


Initial Staff Recommendation

1

Grade range expansion of Armour Heights PS effective September 2021.

Armour Heights PS



- Grade range expansion begins in September 2021, by retaining current Gr 6 class into Gr 7.
- Grade range expansion complete in September 2022 with retention of Gr 8s.
- Grade 7 class projected to be 28 students in 2021 and 28 gr. 8s in 2022.
- Into the future, the class size stabilizes between 18-20 students in both grade 7 and 8.

	2021	2022	2023	2024	2025	2026	2027	2028	2029	2030
Enrolment	228	243	236	234	240	252	249	259	259	257
Utilization	79%	84%	82%	81%	83%	87%	86%	90%	90%	89%
Classroom Surplus/ Deficit	+1	0	0	0	0	0	0	0	0	0

Planning that would be required for 2021-2022

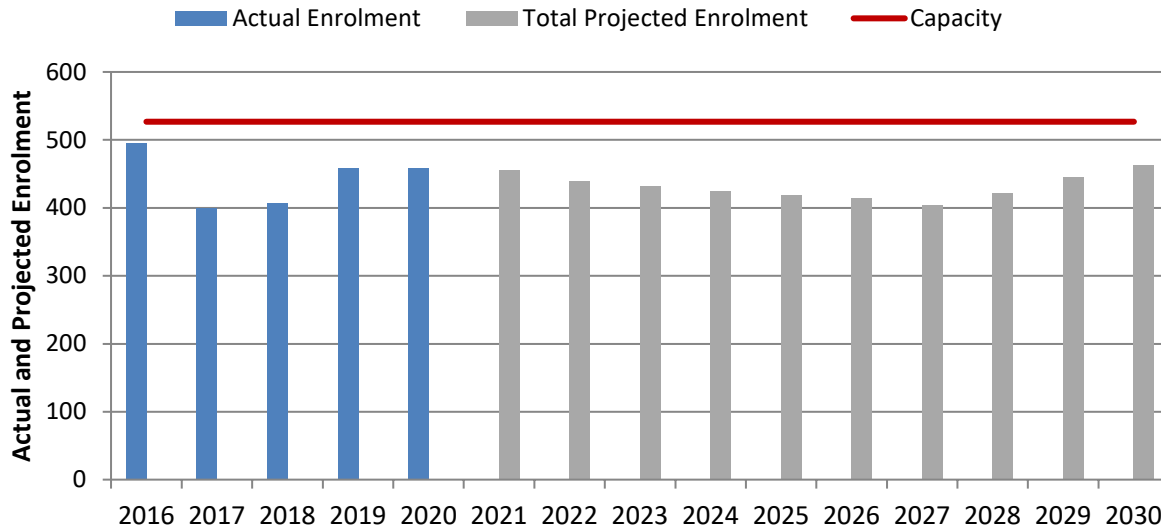
- Library resources to be curated to meet the needs of intermediate learners
- Additional opportunities for Grade 7 (and then) Grade 8 leadership through innovative programs
- Student Council leadership
- Enhanced teams/clubs that can occur as a result of increased student population and associated staff allocation
- Mentoring of new Grade 7 (and then) Grade 8 teachers from teachers in other K-8 schools

Initial Staff Recommendation

1

Grade range expansion of Armour Heights PS effective September 2021.

St. Andrew's MS



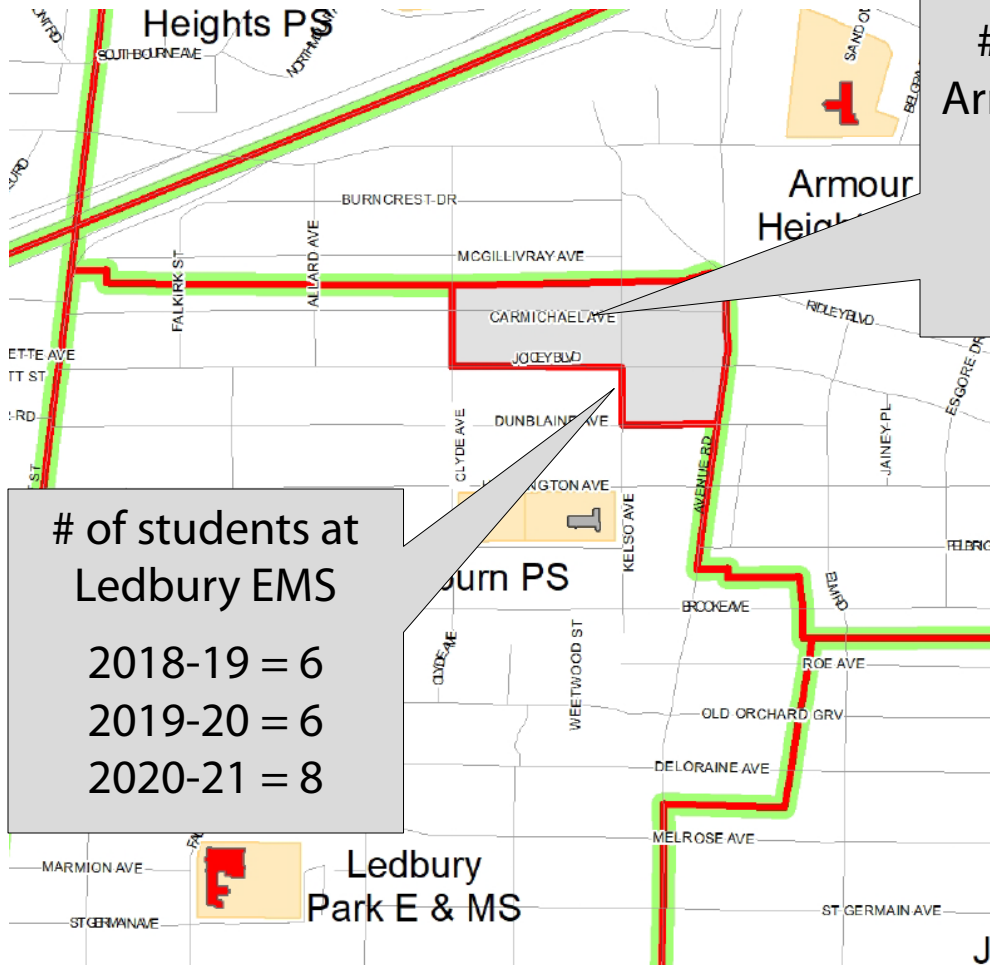
- St. Andrew's no longer receives Armour Heights as a feeder in gr. 7 starting in 2021.
- In 2021, this would mean a projected decrease of 23 gr. 7s from Armour Heights.
- Into the longer term, the number of students a decrease of 15-18 students per grade that would be expected to come from Armour Heights

	2021	2022	2023	2024	2025	2026	2027	2028	2029	2030
Enrolment	456	462	431	424	419	413	405	428	449	464
Utilization	87%	88%	82%	80%	80%	78%	77%	81%	85%	88%
Classroom Surplus/ Deficit	+4	+4	+4	+5	+5	+4	+6	+5	+4	+3

Initial Staff Recommendation

2

Assigning of shared junior boundary area entirely to Ledbury Park EMS



of students at
Armour Heights PS

2018-19 = 9

2019-20 = 4

2020-21 = 0

of students at
Ledbury EMS

2018-19 = 6

2019-20 = 6

2020-21 = 8

- Area south of McGillivray Ave, east of Clyde Ave, north of Dunblaine Ave, and west of Avenue Rd.
- No students currently attending Armour Heights within the shared boundary
- Ledbury enrolment remains ~90-95% utilized into long term

Initial Staff Recommendation Summary

- Armour Heights utilization rate increases from 75% to 88% utilized
 - Increase of 2 additional classrooms being used
- St. Andrew's utilization rate decreases slightly from the mid-90s but remains between 80-88% utilized into the long term
 - Decrease of 1 classrooms being used
- Ledbury remains status quo, 90-95% utilized into the long term, by assigning students in the shared junior boundary entirely to Ledbury

Draft PART Recommendations

- That Armour Heights PS expands its grades from a JK-6 to JK-8 starting in September 2021. Armour Heights PS becomes a JK-7 school in 2021 and JK-8 school in 2022.
- That the junior to intermediate pathway from Armour Heights PS to St. Andrew's MS be grandparented for the 2021/22 school year.
- That the shared boundary between Ledbury Park EMS and Armour Heights PS, be directed entirely to Ledbury Park EMS.

Discussion

- **Discussion about how the public meeting will function in a virtual world**
- **Initial staff recommendation for discussion**
- **Additional questions or ideas from the PART**



Next Steps:

- **Public Meeting, March 18th**
- **PART Working Meeting #2, March 23rd**

