

William Lyon Mackenzie CI Southern Cluster of Schools
PART


Welcome



William Lyon Mackenzie CI Southern Cluster of Schools PART

PART Working Meeting # 2 Agenda


1. Welcome
2. Logistics (review of Notes from PART Meeting #1)
3. Review of Key Issues from PART Meeting # 1
4. Discussion of the LFT Option
5. Analysis of the LFT Option
6. Next Steps
7. Adjournment



William Lyon Mackenzie CI Southern Cluster of Schools PART

Role of PART Members


- **Advise** –role is advisory
- **Consider** a full range of options and **make recommendations** on the grade changes and pathways to inform Trustees
- **Provide feedback** on any boundary changes and any other program issues
- **Report** on the outcome of these meetings and seek feedback from members of your community
- **Hear** from the broader community at Public Meetings
- Continuously **focus** on what is in the **best interest of TDSB students**



William Lyon Mackenzie CI Southern Cluster of Schools PART

Meeting Norms and Procedures

- Aim for consensus
- Represent your school....you know it best
- But also have the system perspective
- Be reflective, respectful and participatory
- Voting Procedures
 - One Vote per School
 - One Student Vote


4 

William Lyon Mackenzie CI Southern Cluster of Schools PART

Setting the Context

What are the Issues?

- Secondary and elementary school pathways
- Accommodations pressures
- Overuse of portables
- The reliance on optional attendance
- Future residential development
- Implementation


5 

William Lyon Mackenzie CI Southern Cluster of Schools PART

Long-Term Program and Accommodation Strategy (LTPAS)

Program Drivers

- ✓ Program Choice - Offer a variety of program choices to all learners including adults
- ✓ Equity - Provide Equity of opportunity and access to programs
- ✓ Fair Access to Specialized Programs and Schools - Achieve a fair and equal distribution of specialized programs and specialized schools
- ✓ Viability - Ensure viability of program


6 

William Lyon Mackenzie CI Southern Cluster of Schools PART

Long-Term Program and Accommodation Strategy (LTPAS)

Accommodation Drivers

- ✓ Good Distribution of Schools - Maintain a distribution of elementary schools within walking distance and secondary schools with good access to public transit and eliminate redundancy (schools in proximity)
- ✓ Minimal Transitions - Minimize school transitions for students
- ✓ Minimal Use of Portables - Minimize the use of portables (three is acceptable if space allows)




William Lyon Mackenzie CI Southern Cluster of Schools PART

Long-Term Program and Accommodation Strategy (LTPAS)

Accommodation Drivers

- ✓ Service Integration - Integrate services in schools (wherever possible)
- ✓ Good Utilization - Target utilization rates of 80% to 90% (review schools at 65% or less and schools over 100% utilization rate)
- ✓ Distinct Attendance Areas - Avoid shared attendance boundary and split attendance areas
- ✓ Efficient use of Space - Use existing space in schools efficiently to balance enrolments




William Lyon Mackenzie CI Southern Cluster of Schools PART

Review Status Quo

Status Quo: If nothing changes to boundaries, grades, pathways, special education programs, and optional attendance levels.

Facility	Actual Oct. 31, 2018 <small>(actual census)</small>				Proj. Oct. 31, 2023				Proj. Oct. 31, 2028			
	Total HC	Cap-actly-zation	Use-ables	Port-ables	Total HC	Cap-actly-zation	Use-ables	Port-ables	Total HC	Cap-actly-zation	Use-ables	Port-ables
Dublin Hrs E & MS	860	718	120%	6	938	718	131%	7	1,056	718	147%	12
Playwood ABC	561	448	114%	5	633	448	144%	8	665	448	151%	10
Leadbury Park, E & MS	560	554	101%	0	592	554	107%	2	594	554	107%	2
Summit Hrs PS	369	326	113%	3	376	326	115%	2	386	326	118%	3
Wm L Mackenzie CI	1,425	924	154%	5	1,581	924	171%	10	1,628	924	176%	12
John Polanyi CI	910	1,032	88%	0	1,072	1,032	104%	0	1,292	1,032	125%	2
Total	4,625	3,094	116%	10	5,192	3,094	130%	29	5,621	3,094	141%	41



William Lyon Mackenzie CI Southern Cluster of Schools PART

Review Status Quo

Regular Program:

For Grades JK-Gr.6/7

for Grades 6-8

for Grades 9-12

10

tdsb.on.ca

William Lyon Mackenzie CI Southern Cluster of Schools PART

Optional Attendance

- Status Quo without Optional Attendance, by Phasing Out:
- Timetable and accommodation efficiencies are implemented.

Facility	Actual Oct. 31, 2018 <small>(status quo)</small>				Proj. Oct. 31, 2023				Proj. Oct. 31, 2028			
	Total HC	Cap. HC	HC/abst. ratio	Peak ables	Total HC	Cap. HC	HC/abst. ratio	Peak ables	Total HC	Cap. HC	HC/abst. ratio	Peak ables
Dublin Hts E & MS	860	718	120%	6	907	718	126%	5	981	718	137%	9
Faywood ABC	501	440	114%	5	594	440	135%	7	570	440	130%	6
Leadbury Park E & MS	560	554	101%	0	592	554	107%	2	594	554	107%	2
Summit Hts PS	369	336	113%	3	379	328	116%	2	392	328	120%	3
Wm L Mackenzie CI	1,425	924	154%	5	1,383	924	150%	0	1,422	924	154%	0
John Polanyi CI	910	1,032	88%	0	1,072	1,032	104%	0	1,292	1,032	125%	2
Total	4,625	3,994	116%	19	4,927	3,994	123%	16	5,251	3,994	131%	22

11

tdsb.on.ca

William Lyon Mackenzie CI Southern Cluster of Schools PART

Optional Attendance

Regular Program:

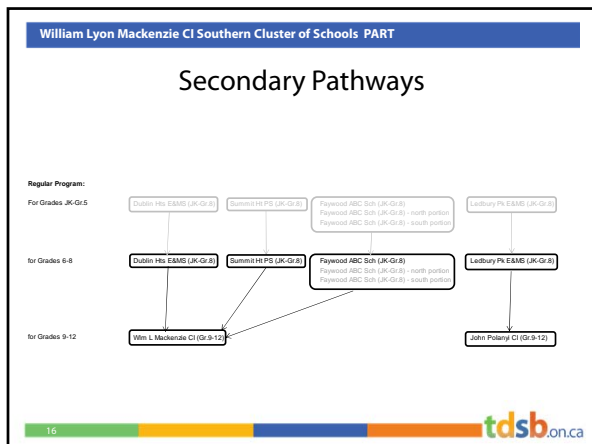
For Grades JK-Gr.6/7

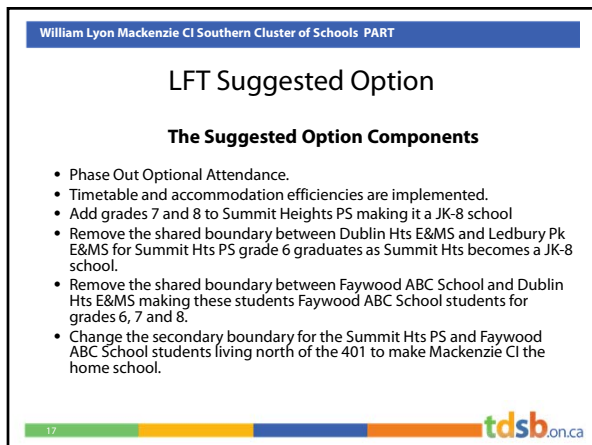
for Grades 6-8

for Grades 9-12

12

tdsb.on.ca





William Lyon Mackenzie CI Southern Cluster of Schools PART

LFT Suggested Option

- Phase Out Optional Attendance.
- Timetable and accommodation efficiencies are implemented.
- Add grades 7 and 8 to Summit Heights PS making it a JK-8 school
- Remove the shared boundary between Dublin Hts E&MS and Ledbury Pk E&MS for Summit Hts PS grade 6 graduates as Summit Hts becomes a JK-8 school.
- Remove the shared boundary between Faywood ABC School and Dublin Hts E&MS making these students Faywood ABC School students for grades 6, 7 and 8.
- Change the secondary boundary for the Summit Hts PS and Faywood ABC School students living north of the 401 to make Mackenzie CI the home school.

Facility	Actual Oct. 31, 2018 <small>(without changes)</small>				Prog. Oct. 31, 2023				Prog. Oct. 31, 2026			
	Total HC	Cap. activity	HC Lib. zation	Port. ables	Total HC	Cap. activity	HC Lib. zation	Port. ables	Total HC	Cap. activity	HC Lib. zation	Port. ables
Dublin Hts E & MS	860	718	120%	6	838	718	117%	2	906	718	126%	5
Faywood ABC	591	440	114%	5	624	440	142%	8	680	440	136%	7
Ledbury Park, E. & MS	560	554	101%	0	592	554	107%	2	594	554	107%	2
Summit Hts PS	369	326	113%	3	430	326	132%	5	452	326	139%	5
Win L Mackenzie CI	1,425	304	154%	5	1,536	304	160%	0	1,575	304	170%	1
John Polanyi CI	919	1,032	88%	0	1,017	1,032	99%	0	1,237	1,032	120%	0
Total	4,625	3,094	116%	19	5,007	3,094	126%	17	5,364	3,094	134%	20

tdsb.on.ca

William Lyon Mackenzie CI Southern Cluster of Schools PART

LFT Suggested Option

Regular Program:

For Grades JK-Gr.5

For Grades 6-8

For Grades 9-12

19

tdsb.on.ca

William Lyon Mackenzie CI Southern Cluster of Schools PART

Other Strategies in Our Tool Kit

What options do we have in our Tool Kit to address schools where enrolments are still high and we still have many portables?

- Additions (Board makes a Business Case to the Ministry of Education)
- Redirections of new residential developments

20

tdsb.on.ca

William Lyon Mackenzie CI Southern Cluster of Schools PART

Other Strategies in our Tool Kit

There are options which are not part of the PART recommendations or Board decisions because they are decision made by staff.

- Specialized Program Numbers
- Moving Special Education Programs
- Secondary School Timetable changes which increase efficiency in the use of space and makes the shared spaces less crowded (i.e. two lunches, grade timetabling)

21

tdsb.on.ca

William Lyon Mackenzie CI Southern Cluster of Schools PART

Balancing Enrolments Possibilities

Facility	Actual Oct. 31, 2018			LFT Suggested Option			Possible Gifted Locations									
	Total Cap.	Usb.	Port.	Total Cap.	Usb.	Port.	Proj. Oct. 31, 2023	Proj. Oct. 31, 2023	Proj. Oct. 31, 2023	Proj. Oct. 31, 2023	Proj. Oct. 31, 2023	Proj. Oct. 31, 2023				
	HC	acty	zation	absls	HC	acty	zation	absls	HC	acty	zation	absls	HC	acty	zation	absls
Dublin Hrs E & MS Status Quo Gifted (Gr-7-8)	860	718	120%	6	838	718	117%	2	No Gifted	No Gifted	Gr-4-8	0	821	718	139%	5
Faywood ABC	501	440	114%	5	624	440	142%	8	Gr-4-8	No Gifted	No Gifted	0	624	440	142%	8
Summit Hrs PS Status Quo Gifted (Gr-4-6)	369	326	113%	3	430	326	132%	5	No Gifted	Gr-4-8	No Gifted	0	485	326	149%	7
Total																

Facility	Actual Oct. 31, 2018			LFT Suggested Option			Possible Gifted Locations									
	Total Cap.	Usb.	Port.	Total Cap.	Usb.	Port.	Proj. Oct. 31, 2028	Proj. Oct. 31, 2028	Proj. Oct. 31, 2028	Proj. Oct. 31, 2028	Proj. Oct. 31, 2028	Proj. Oct. 31, 2028				
	HC	acty	zation	absls	HC	acty	zation	absls	HC	acty	zation	absls	HC	acty	zation	absls
Dublin Hrs E & MS Status Quo Gifted (Gr-7-8)	860	718	120%	6	908	718	126%	5	No Gifted	No Gifted	Gr-4-8	3	909	718	126%	5
Faywood ABC	501	440	114%	5	600	440	136%	7	Gr-4-8	No Gifted	No Gifted	0	600	440	136%	7
Summit Hrs PS Status Quo Gifted (Gr-4-6)	369	326	113%	3	452	326	139%	5	No Gifted	Gr-4-8	No Gifted	0	507	326	156%	7
Total																

tdsb.on.ca

William Lyon Mackenzie CI Southern Cluster of Schools PART

Balancing Enrolments Possibilities

Facility	Actual Oct. 31, 2018			LFT Suggested Option			Possible Deaf and Hard of Hearing (Oral & Sign) Locations									
	Total Cap.	Usb.	Port.	Total Cap.	Usb.	Port.	Proj. Oct. 31, 2023	Proj. Oct. 31, 2023	Proj. Oct. 31, 2023	Proj. Oct. 31, 2023	Proj. Oct. 31, 2023	Proj. Oct. 31, 2023				
	HC	acty	zation	absls	HC	acty	zation	absls	HC	acty	zation	absls	HC	acty	zation	absls
Dublin Hrs E & MS Status Quo DHH (Oral)	860	718	120%	6	838	718	117%	2	DHH (Oral and Sign)	No DHH	No DHH	0	822	718	114%	0
Faywood ABC Status Quo DHH (Sign)	501	440	114%	5	624	440	142%	8	No DHH	DHH (Oral and Sign)	No DHH	0	602	440	137%	3
Summit Hrs PS	369	326	113%	3	430	326	132%	5	No DHH	No DHH	DHH (Oral and Sign)	12	488	326	144%	15
Total																

Facility	Actual Oct. 31, 2018			LFT Suggested Option			Possible Deaf and Hard of Hearing (Oral & Sign) Locations									
	Total Cap.	Usb.	Port.	Total Cap.	Usb.	Port.	Proj. Oct. 31, 2028	Proj. Oct. 31, 2028	Proj. Oct. 31, 2028	Proj. Oct. 31, 2028	Proj. Oct. 31, 2028	Proj. Oct. 31, 2028				
	HC	acty	zation	absls	HC	acty	zation	absls	HC	acty	zation	absls	HC	acty	zation	absls
Dublin Hrs E & MS Status Quo DHH (Oral)	860	718	120%	6	908	718	126%	5	DHH (Oral and Sign)	No DHH	No DHH	3	890	718	124%	3
Faywood ABC Status Quo DHH (Sign)	501	440	114%	5	600	440	136%	7	No DHH	DHH (Oral and Sign)	No DHH	0	616	440	140%	9
Summit Hrs PS	369	326	113%	3	452	326	139%	5	No DHH	No DHH	DHH (Oral and Sign)	12	490	326	150%	12
Total																

tdsb.on.ca

William Lyon Mackenzie CI Southern Cluster of Schools PART

Balancing Enrolments Possibilities

Facility	Actual Oct. 31, 2018			LFT Suggested Option			Possible Enrolment Reduction								
	Total Cap.	Usb.	Port.	Total Cap.	Usb.	Port.	Proj. Oct. 31, 2023	Proj. Oct. 31, 2023	Proj. Oct. 31, 2023						
	HC	acty	zation	absls	HC	acty	zation	absls	HC	acty	zation	absls			
Wim L Mackenzie CI - MACS Program (enrolment: R(Gr-8-20) 0-0)	1,420	924	154%	0	1,536	924	168%	0	Reduction (144: 0) 0-0	0	1,488	924	159%	0	
Total															


Facility	Actual Oct. 31, 2018			LFT Suggested Option			Possible Enrolment Reduction								
	Total Cap.	Usb.	Port.	Total Cap.	Usb.	Port.	Proj. Oct. 31, 2028	Proj. Oct. 31, 2028	Proj. Oct. 31, 2028						
	HC	acty	zation	absls	HC	acty	zation	absls	HC	acty	zation	absls			
Wim L Mackenzie CI - MACS Program (enrolment: R(Gr-8-20) 0-0)	1,420	924	154%	0	1,575	924	170%	1	Reduction (144: 0) 0-0	0	1,483	924	160%	0	
Total															

tdsb.on.ca

William Lyon Mackenzie CI Southern Cluster of Schools PART

Review of LFT Suggested Option


At your tables review the LFT Suggested Option using the questions on the placemat.

25 

William Lyon Mackenzie CI Southern Cluster of Schools PART

Share results


Share the results of the table discussion with the whole group.

26 

William Lyon Mackenzie CI Southern Cluster of Schools PART

Next Steps

- Reflect upon today's presentation...
- Share the information
- Refer to your takeaway notes
- Next meeting
 - Feedback from community...what are the questions
 - Implementation discussions
 - Prepare for the Public Meeting

27 

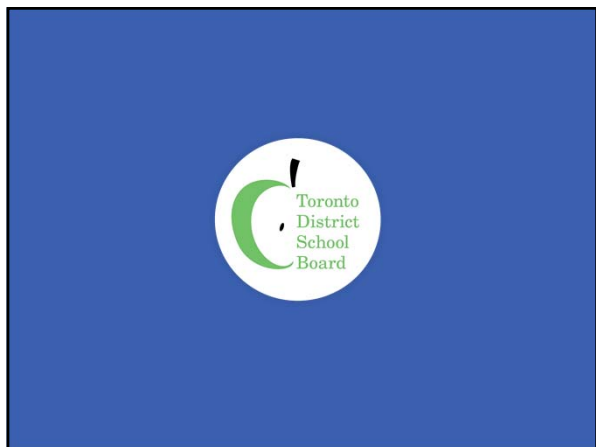
William Lyon Mackenzie CI Southern Cluster of Schools PART

Materials

All our materials will be on the website. The website is a great resource. <http://www.tdsb.on.ca/About-Us/Strategy-Planning/Search-All-Reviews>

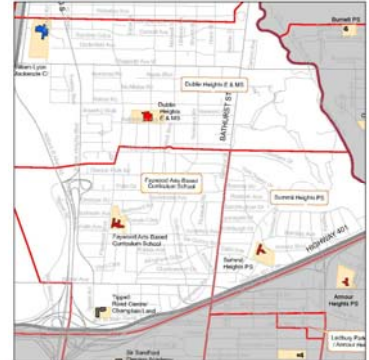


The screenshot shows the TDSB website's 'Accommodation Reviews' page. It features a navigation menu with options like 'Home', 'Early Years', 'Elementary School', 'High School', 'Adult Learning', 'Accessibility, Learning and Special Education', and 'Parents'. The main content area is titled 'Accommodation Reviews' and includes a dropdown menu for 'Program Area Review' and 'Review Name'. Below this, there is a section for 'About Us' with links to various departments such as 'Director of Education', 'Early Childhood', 'Finance, Procurement & IT', 'Human Resources', 'Employment', 'School Board Office', 'Facility Services', and 'Strategy & Planning'. A footer at the bottom left shows the number '28' and the TDSB logo with the URL 'tdsb.on.ca'.



William Lyon Mackenzie CI Southern Cluster of Schools PART

Ward 5 Selected Facilities and Junior Attendance Areas



The map displays the geographical layout of Ward 5, highlighting specific facilities and attendance areas. Key locations marked include 'Dixie High School & MS', 'Dixie Middle School', 'Fountain Ave. Board Composite School', 'Fountain Ave. Board Composite School', 'Tupper Heights P.S.', 'Tupper Heights P.S.', 'Amcor Heights P.S.', 'Lashby Park / Amcor P.S.', and 'De Safford / Charles H. Smith'. A legend in the bottom right corner provides a key for the symbols and colors used on the map. The TDSB logo and website URL 'tdsb.on.ca' are visible in the bottom right corner of the slide.

