

Oakridge Jr PS & Samuel Hearne MS

Program Area Review Team (PART)

Community Meeting – March 23, 2015

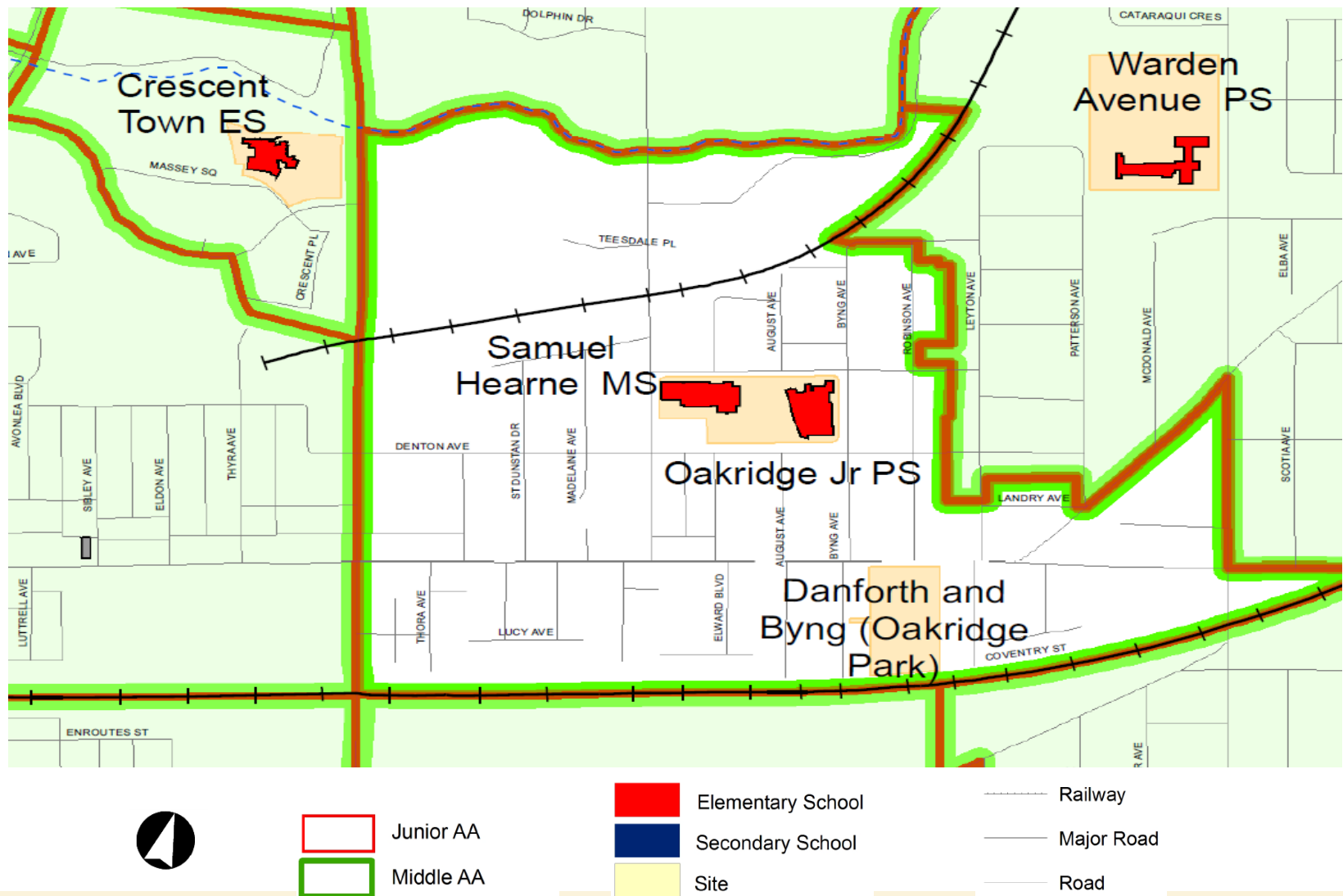
Toronto District School Board



Agenda

- Trustee Parthi Kandavel Welcome
- Program Area Review Team Process and Progress
- Historical and Projected Student Enrolment
- Review of first Community Meeting
- Student Accommodation Proposal
- Transition Plan
- Next Steps
- Questions

Location Map



What is a Program Area Review?

- The study of the impact of a new school, boundary change, program or grade configuration on a school or group of schools

What is a Program Area Review Team?

- A group of TDSB and parent representatives formed to complete a Program Area Review

Membership of the Part:

- Superintendent: Stacey Michener
- Trustee: Parthi Kandavel
- Principal: Heather Groves, Oakridge Jr PS
- Principal: Sohail Shaikh, Samuel Hearne MS
- School Council Chair: Javed KhanMajlish, Oakridge Jr PS
- School Council Chair: Monjur Mahmud, Samuel Hearne MS

Central Staff provide support to the PART committee but are not members.

Role of PART Members:

- Study, report, and make recommendations regarding the school(s) under review.

Process to Date – Oakridge Jr PS & Samuel Hearne MS Uncomplicated Grade Change

Long Term Program and Accommodation Strategy 2014

Report to Central Accommodation Team requesting approval to start LFT – August 28, 2014

Local Feasibility Team (LFT)

LFT Meetings - January 19, February 11 & February 25, 2015

Trustee Community Meeting - February 23, 2015

Report to Central Accommodation Team requesting approval to start PART – February 26, 2015

Program Area Review Team (PART)

PART Working Meeting – Review Student Accommodation issue and determine options – March 6, 2015

PART Community Meeting – March 23, 2015

PART Working Meeting – Confirm PART student accommodation recommendation – March 23, 2015

Reporting out and Final Decision

Enrolment History and Projections, 2012-2024

Status Quo

Oakridge Junior Public School

- Currently a JK to Grade 5 Junior School
- Ministry Rated Capacity..... **703** pupil places

Year	Student Enrolment as of September 30th of each year								Utilization Rate	Portables on Site
	JK	SK	Gr.1	Gr.2	Gr.3	Gr.4	Gr.5	Total		
Actual										
2012	121	115	116	112	110	90	95	759	108%	7
2013	119	114	122	108	111	119	87	780	111%	7
2014	107	119	106	124	105	104	106	771	110%	7
Projected										
2015	140	100	118	106	123	95	99	781	111%	7
2016	120	136	99	119	105	118	91	788	112%	7
2017	129	116	135	100	118	101	113	812	116%	8
2018	129	125	115	136	99	113	97	814	116%	8
2019	127	125	124	116	135	95	108	830	118%	9
2024	123	119	120	121	122	117	114	836	119%	9

Enrolment History and Projections, 2012-2024

Status Quo

Samuel Hearne Middle School

- Currently a Grade 6 to 8 program school

- Ministry Rated Capacity..... **423** pupil places

Year	Student Enrolment as of September 30th of each year				Utilization
	Gr 6	Gr 7	Gr 8	Total	Rate
Actual					
2012	108	108	89	305	72%
2013	97	106	104	307	73%
2014	84	92	105	281	66%
Projected					
2015	108	81	91	280	66%
2016	100	104	79	283	67%
2017	92	96	102	290	69%
2018	114	88	94	296	70%
2019	98	109	86	293	69%
2024	115	103	119	337	80%

Enrolment History and Projections, 2012-2024

Proposed Grade Range Change

Oakridge Junior Public School

- Convert Oakridge into a JK to Grade 4 Junior Public School effective September 2015
- Ministry Rated Capacity..... **703** pupil places

Year	Student Enrolment as of September 30th of each year								Utilization Rate	Portables on Site
	JK	SK	Gr.1	Gr.2	Gr.3	Gr.4	Gr.5	Total		
Actual										
2012	121	115	116	112	110	90	95	759	108%	7
2013	119	114	122	108	111	119	87	780	111%	7
2014	107	119	106	124	105	104	106	771	110%	7
Projected										
2015	140	100	118	106	123	95		682	97%	2
2016	120	136	99	119	105	118		697	99%	2
2017	129	116	135	100	118	101		699	99%	2
2018	129	125	115	136	99	113		717	102%	3
2019	127	125	124	116	135	95		722	103%	3
2024	123	119	120	121	122	117		722	103%	3

Enrolment History and Projections, 2012-2024

Proposed Grade Range Change

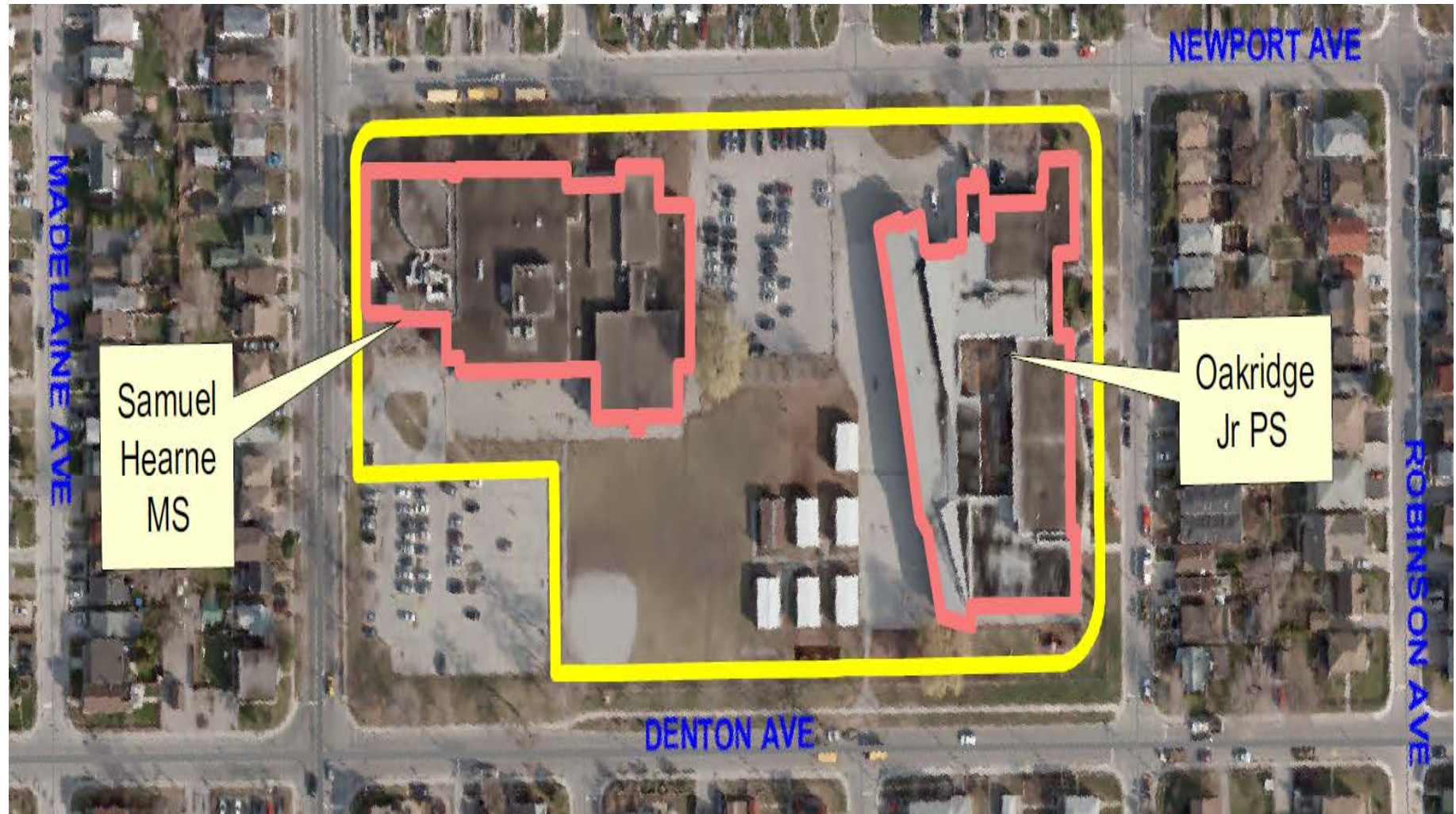
Samuel Hearne Middle School

- Convert Samuel Hearne into a Grade 5 to 8 Middle School effective September 2015

- Ministry Rated Capacity..... **423** pupil places

Year	Student Enrolment as of September 30th of each year					Utilization
	Gr 5	Gr 6	Gr 7	Gr 8	Total	Rate
Actual						
2012		108	108	89	305	72%
2013		97	106	104	307	73%
2014		84	92	105	281	66%
Projected						
2015	99	108	81	91	379	90%
2016	91	100	104	79	374	88%
2017	113	92	96	102	403	95%
2018	97	114	88	94	393	93%
2019	108	98	109	86	401	95%
2024	114	115	103	119	451	107%

Oakridge Jr PS & Samuel Hearne MS Site Plan



Next Steps: Reporting Out

Central Accommodation Team

Report to Central Accommodation Team with recommendations of the PART – Proposed: March 26, 2015

Executive Council

Report to Executive Council with recommendations of the PART – Proposed: March 31, 2015

Planning and Priorities Committee

Report to Planning and Priorities Committee with recommendations of the PART – Proposed: April 8, 2015

Board

A final decision is made by the TDSB Board – Proposed: April 15, 2015

