

# Pre-Eng

## **Pre-Eng Contracting Ltd.**

General Contractors • Construction Managers

1 Applewood Crescent, Unit 10, Concord, Ontario L4K 4K1 T 905.738.6866 F 905.738.4879 E [info@pre-eng.com](mailto:info@pre-eng.com)

August 10, 2023

Dear Neighbor:

As part of the agreement between the City of Toronto and the Toronto District School Board, for the new addition to George Syme Community School, sections of the city sidewalk at the perimeter of the school property along French Avenue and Prichard Avenue will be widened.

This work will take place starting from August 14, 2023 up to September 22, 2023.

During this period, east half of French Avenue will be closed to traffic for construction purposes, and no street parking will be allowed on the west half of French Avenue during this time.

On Prichard Avenue, a section of the street will be used for construction along the south sidewalk. This will narrow down the two way lanes along Prichard Avenue between French Avenue and Maraposa Avenue. No parking will be allowed on Prichard Avenue between French Ave. and Maraposa Ave. during this time.

Thank you for your cooperation.

Yours very truly,

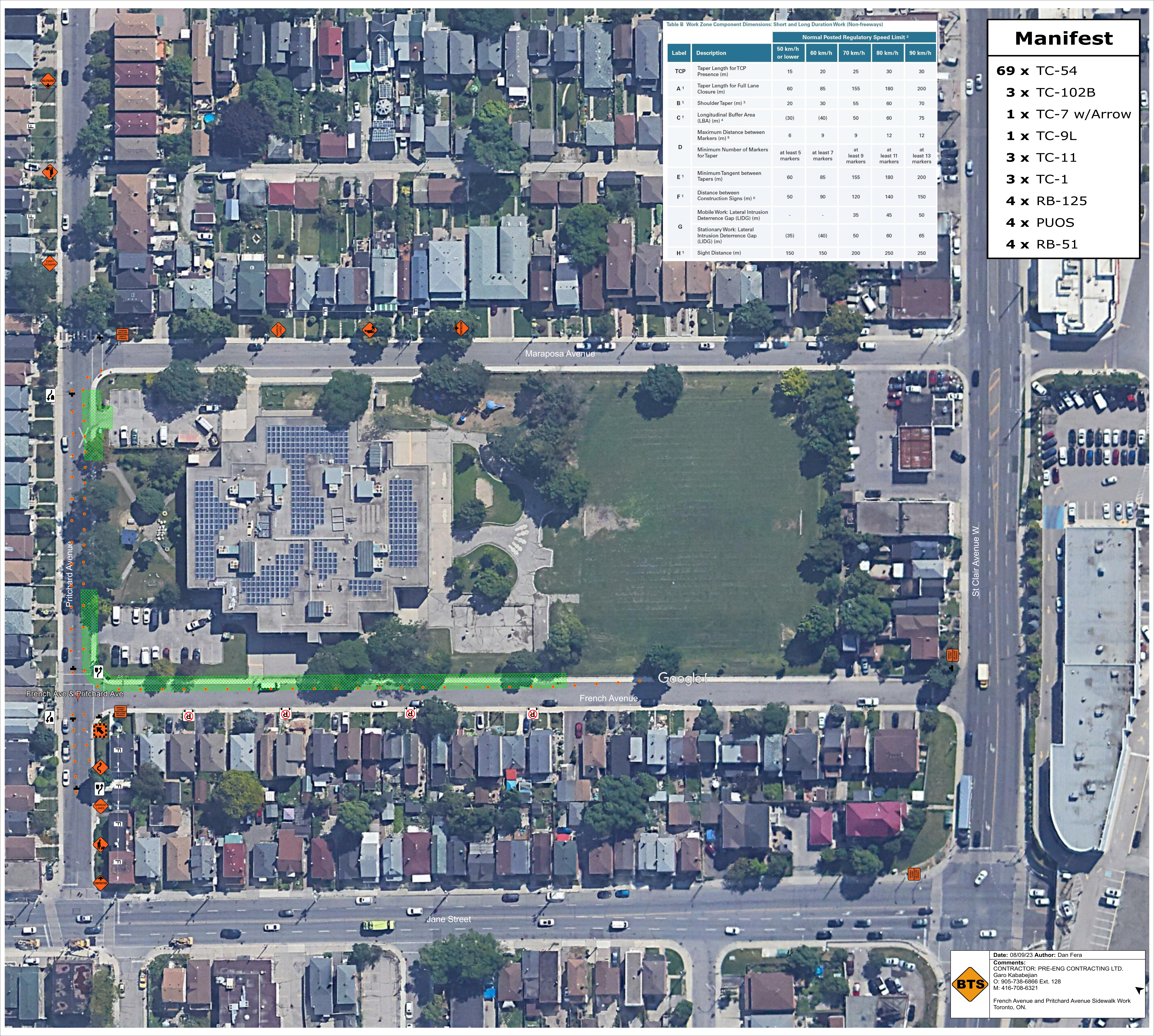
Pre-Eng Contracting Ltd.

Table B Work Zone Component Dimensions: Short and Long Duration Work (Non-freeways)

Label	Description	Normal Posted Regulatory Speed Limit <sup>2</sup>				
		50 km/h or lower	60 km/h	70 km/h	80 km/h	90 km/h
TCP	Taper Length for TCP Presence (m)	15	20	25	30	30
A <sup>1</sup>	Taper Length for Full Lane Closure (m)	60	85	155	180	200
B <sup>1</sup>	Shoulder Taper (m) <sup>3</sup>	20	30	55	60	70
C <sup>1</sup>	Longitudinal Buffer Area (LBA) (m) <sup>4</sup>	(30)	(40)	50	60	75
D	Maximum Distance between Markers (m) <sup>5</sup>	6	9	9	12	12
	Minimum Number of Markers for Taper	at least 5 markers	at least 7 markers	at least 9 markers	at least 11 markers	at least 13 markers
E <sup>1</sup>	Minimum Tangent between Tapers (m)	60	85	155	180	200
F <sup>1</sup>	Distance between Construction Signs (m) <sup>6</sup>	50	90	120	140	150
G	Mobile Work: Lateral Intrusion Deterrence Gap (LIDG) (m)	-	-	35	45	50
	Stationary Work: Lateral Intrusion Deterrence Gap (LIDG) (m)	(35)	(40)	50	60	65
H <sup>1</sup>	Sight Distance (m)	150	150	200	250	250

# Manifest

- 69 x TC-54**
- 3 x TC-102B**
- 1 x TC-7 w/Arrow**
- 1 x TC-9L**
- 3 x TC-11**
- 3 x TC-1**
- 4 x RB-125**
- 4 x PUOS**
- 4 x RB-51**



Date: 08/09/23 Author: Dan Fera  
 Comments:  
 CONTRACTOR: PRE-ENG CONTRACTING LTD.  
 Garo Kababajian  
 O: 905-738-6866 Ext. 128  
 M: 416-708-6321  
 French Avenue and Pritchard Avenue Sidewalk Work  
 Toronto, ON.