



Project: Redevelopment of Dav Date: Wed 6/10/20

| | | | | | | |
|-----------|-----------------|--------------------|-----------------------|----------------|--------------------|-----------------|
| Task | Summary | Inactive Milestone | Duration-only | Start-only | External Milestone | Critical Split |
| Split | Project Summary | Inactive Summary | Manual Summary Rollup | Finish-only | Deadline | Progress |
| Milestone | Inactive Task | Manual Task | Manual Summary | External Tasks | Critical | Manual Progress |



| ID | Task Mode | Task Name | Notes | Start | Finish | Duration | Gantt Chart (1/27/20 to 8/25/20) | | | | | | | | | | | | | | | | | | | | | | | | | | | |
|-----|-----------|---|--|--------------------|---------------------|-----------------|--|--|--|--|--|--|--|--|--|--|--|--|--|--|--|--|--|--|--|--|--|--|--|--|--|--|--|--|
| 70 | ✓ | PRECAST GROUTING | work period altered due to 68 davisville issues | Tue 12/10/19 | Fri 1/31/20 | 39 days | [Gantt bar from 12/10/19 to 1/31/20] | | | | | | | | | | | | | | | | | | | | | | | | | | | |
| 71 | ✓ | MECHANICAL / ELECTRICAL ROUGH-INS | work period altered due to 68 davisville issues | Wed 8/21/19 | Fri 6/26/20 | 223 days | [Gantt bar from 8/21/19 to 6/26/20] | | | | | | | | | | | | | | | | | | | | | | | | | | | |
| 72 | ✓ | SPRINKLER ROUGHINS | work period altered due to 68 davisville issues | Wed 8/21/19 | Fri 6/26/20 | 223 days | [Gantt bar from 8/21/19 to 6/26/20] | | | | | | | | | | | | | | | | | | | | | | | | | | | |
| 73 | ✓ | HVAC ROUGH INS | work period altered due to 68 davisville issues | Wed 8/21/19 | Fri 6/26/20 | 223 days | [Gantt bar from 8/21/19 to 6/26/20] | | | | | | | | | | | | | | | | | | | | | | | | | | | |
| 74 | ☒ | SECOND FLOOR | | Mon 1/6/20 | Wed 10/28/20 | 213 days | [Summary bar from 1/6/20 to 10/28/20] | | | | | | | | | | | | | | | | | | | | | | | | | | | |
| 75 | ✓ | METAL DECK TOPPING | work period extended due to 68 davisville issues | Mon 3/30/20 | Tue 6/2/20 | 47 days | [Gantt bar from 3/30/20 to 6/2/20] | | | | | | | | | | | | | | | | | | | | | | | | | | | |
| 76 | ✓ | LOAD BEARING MASONRY WALLS | work period extended due to 68 davisville issues | Mon 1/6/20 | Wed 5/27/20 | 103 days | [Gantt bar from 1/6/20 to 5/27/20] | | | | | | | | | | | | | | | | | | | | | | | | | | | |
| 77 | ✓ | STRUCTURAL STEEL FOR PRECAST & STEEL FOR LOW ROOFS | work period extended due to 68 davisville issues | Mon 1/6/20 | Fri 1/24/20 | 15 days | [Gantt bar from 1/6/20 to 1/24/20] | | | | | | | | | | | | | | | | | | | | | | | | | | | |
| 78 | ✓ | PRECAST SLABS - 3rd flr | work period extended due to 68 davisville issues | Mon 2/24/20 | Mon 3/2/20 | 6 days | [Gantt bar from 2/24/20 to 3/2/20] | | | | | | | | | | | | | | | | | | | | | | | | | | | |
| 79 | ✓ | PRECAST STAIRS | work period extended due to 68 davisville issues | Mon 2/24/20 | Wed 3/4/20 | 8 days | [Gantt bar from 2/24/20 to 3/4/20] | | | | | | | | | | | | | | | | | | | | | | | | | | | |
| 80 | ✓ | PRECAST GROUTING | work period extended due to 68 davisville issues | Mon 2/24/20 | Tue 3/10/20 | 12 days | [Gantt bar from 2/24/20 to 3/10/20] | | | | | | | | | | | | | | | | | | | | | | | | | | | |
| 81 | ✓ | PRECAST SLABS TOPPING - 2nd flr | work period extended due to 68 davisville issues | Wed 4/1/20 | Tue 4/7/20 | 5 days | [Gantt bar from 4/1/20 to 4/7/20] | | | | | | | | | | | | | | | | | | | | | | | | | | | |
| 82 | ✓ | NON LOAD BEARING MASONRY WALLS | work period extended due to 68 davisville issues | Thu 4/9/20 | Fri 7/10/20 | 67 days | [Gantt bar from 4/9/20 to 7/10/20] | | | | | | | | | | | | | | | | | | | | | | | | | | | |
| 83 | ✓ | MECHANICAL / ELECTRICAL ROUGH-INS | work period extended due to 68 davisville issues | Mon 1/6/20 | Fri 7/17/20 | 140 days | [Gantt bar from 1/6/20 to 7/17/20] | | | | | | | | | | | | | | | | | | | | | | | | | | | |
| 84 | ✓ | SPRINKLER ROUGHINS | work period extended due to 68 davisville issues | Mon 1/6/20 | Fri 7/17/20 | 140 days | [Gantt bar from 1/6/20 to 7/17/20] | | | | | | | | | | | | | | | | | | | | | | | | | | | |
| 85 | ✓ | HVAC ROUGH INS | work period extended due to 68 davisville issues | Mon 1/6/20 | Fri 7/17/20 | 140 days | [Gantt bar from 1/6/20 to 7/17/20] | | | | | | | | | | | | | | | | | | | | | | | | | | | |
| 86 | ✓ | STRUCTURAL STEEL EMBEDDED ITEMS FOR GUARD RAILS AT GREEN ROOF | work period extended due to 68 davisville issues | Mon 7/6/20 | Mon 8/17/20 | 31 days | [Gantt bar from 7/6/20 to 8/17/20] | | | | | | | | | | | | | | | | | | | | | | | | | | | |
| 87 | ✓ | FORM & POUR GREEN ROOF PLANTERS | work period extended due to 68 davisville issues | Mon 8/17/20 | Mon 9/28/20 | 31 days | [Gantt bar from 8/17/20 to 9/28/20] | | | | | | | | | | | | | | | | | | | | | | | | | | | |
| 88 | ✓ | FORM AND POUR CAST IN PLACE RAMPS | work period extended due to 68 davisville issues | Mon 8/17/20 | Wed 10/28/20 | 53 days | [Gantt bar from 8/17/20 to 10/28/20] | | | | | | | | | | | | | | | | | | | | | | | | | | | |
| 89 | ☒ | THIRD FLOOR | | Mon 2/24/20 | Thu 10/15/20 | 169 days | [Summary bar from 2/24/20 to 10/15/20] | | | | | | | | | | | | | | | | | | | | | | | | | | | |
| 90 | ✓ | LOAD BEARING MASONRY WALLS | | Mon 2/24/20 | Thu 4/9/20 | 34 days | [Gantt bar from 2/24/20 to 4/9/20] | | | | | | | | | | | | | | | | | | | | | | | | | | | |
| 91 | ✓ | STRUCTURAL STEEL FOR ROOF PRECAST | | Thu 5/21/20 | Thu 5/21/20 | 1 day | [Gantt bar at 5/21/20] | | | | | | | | | | | | | | | | | | | | | | | | | | | |
| 92 | ✓ | PRECAST SLABS - roof slab | | Mon 5/25/20 | Mon 5/25/20 | 1 day | [Gantt bar at 5/25/20] | | | | | | | | | | | | | | | | | | | | | | | | | | | |
| 93 | ✓ | PRECAST STAIRS | | Thu 3/5/20 | Thu 3/5/20 | 0 days | [Gantt bar at 3/5/20] | | | | | | | | | | | | | | | | | | | | | | | | | | | |
| 94 | ✓ | PRECAST GROUTING | | Mon 5/25/20 | Mon 5/25/20 | 1 day | [Gantt bar at 5/25/20] | | | | | | | | | | | | | | | | | | | | | | | | | | | |
| 95 | ✓ | PRECAST SLABS TOPPING - 3rd flr | | Mon 5/25/20 | Fri 5/29/20 | 5 days | [Gantt bar from 5/25/20 to 5/29/20] | | | | | | | | | | | | | | | | | | | | | | | | | | | |
| 96 | ✓ | NON LOAD BEARING MASONRY WALLS | | Fri 5/29/20 | Fri 9/25/20 | 86 days | [Gantt bar from 5/29/20 to 9/25/20] | | | | | | | | | | | | | | | | | | | | | | | | | | | |
| 97 | ✓ | MECHANICAL / ELECTRICAL ROUGH-INS | | Fri 5/29/20 | Thu 10/15/20 | 100 days | [Gantt bar from 5/29/20 to 10/15/20] | | | | | | | | | | | | | | | | | | | | | | | | | | | |
| 98 | ✓ | SPRINKLER ROUGHINS | | Fri 5/29/20 | Thu 10/15/20 | 100 days | [Gantt bar from 5/29/20 to 10/15/20] | | | | | | | | | | | | | | | | | | | | | | | | | | | |
| 99 | ✓ | HVAC ROUGH INS | | Fri 5/29/20 | Thu 10/15/20 | 100 days | [Gantt bar from 5/29/20 to 10/15/20] | | | | | | | | | | | | | | | | | | | | | | | | | | | |
| 100 | ✓ | STRUCTURAL STEEL EMBEDDED ITEMS FOR GUARD RAILS AT GREEN ROOF | | Mon 7/6/20 | Mon 8/17/20 | 31 days | [Gantt bar from 7/6/20 to 8/17/20] | | | | | | | | | | | | | | | | | | | | | | | | | | | |
| 101 | ✓ | FORM & POUR GREEN ROOF CONCRETE CURBS | | Mon 8/17/20 | Fri 9/4/20 | 15 days | [Gantt bar from 8/17/20 to 9/4/20] | | | | | | | | | | | | | | | | | | | | | | | | | | | |
| 102 | ☒ | ROOF | | Tue 5/19/20 | Fri 8/28/20 | 74 days | [Summary bar from 5/19/20 to 8/28/20] | | | | | | | | | | | | | | | | | | | | | | | | | | | |
| 103 | ✓ | steel decking | | Tue 5/19/20 | Tue 6/9/20 | 16 days | [Gantt bar from 5/19/20 to 6/9/20] | | | | | | | | | | | | | | | | | | | | | | | | | | | |
| 104 | ✓ | PRECAST SLABS TOPPING - roof slab | | Mon 6/1/20 | Fri 7/3/20 | 25 days | [Gantt bar from 6/1/20 to 7/3/20] | | | | | | | | | | | | | | | | | | | | | | | | | | | |
| 105 | ✓ | MASONRY PARRAPET LOW ROOFS | | Wed 6/3/20 | Tue 7/7/20 | 25 days | [Gantt bar from 6/3/20 to 7/7/20] | | | | | | | | | | | | | | | | | | | | | | | | | | | |

Project: Redevelopment of Dav Date: Wed 6/10/20

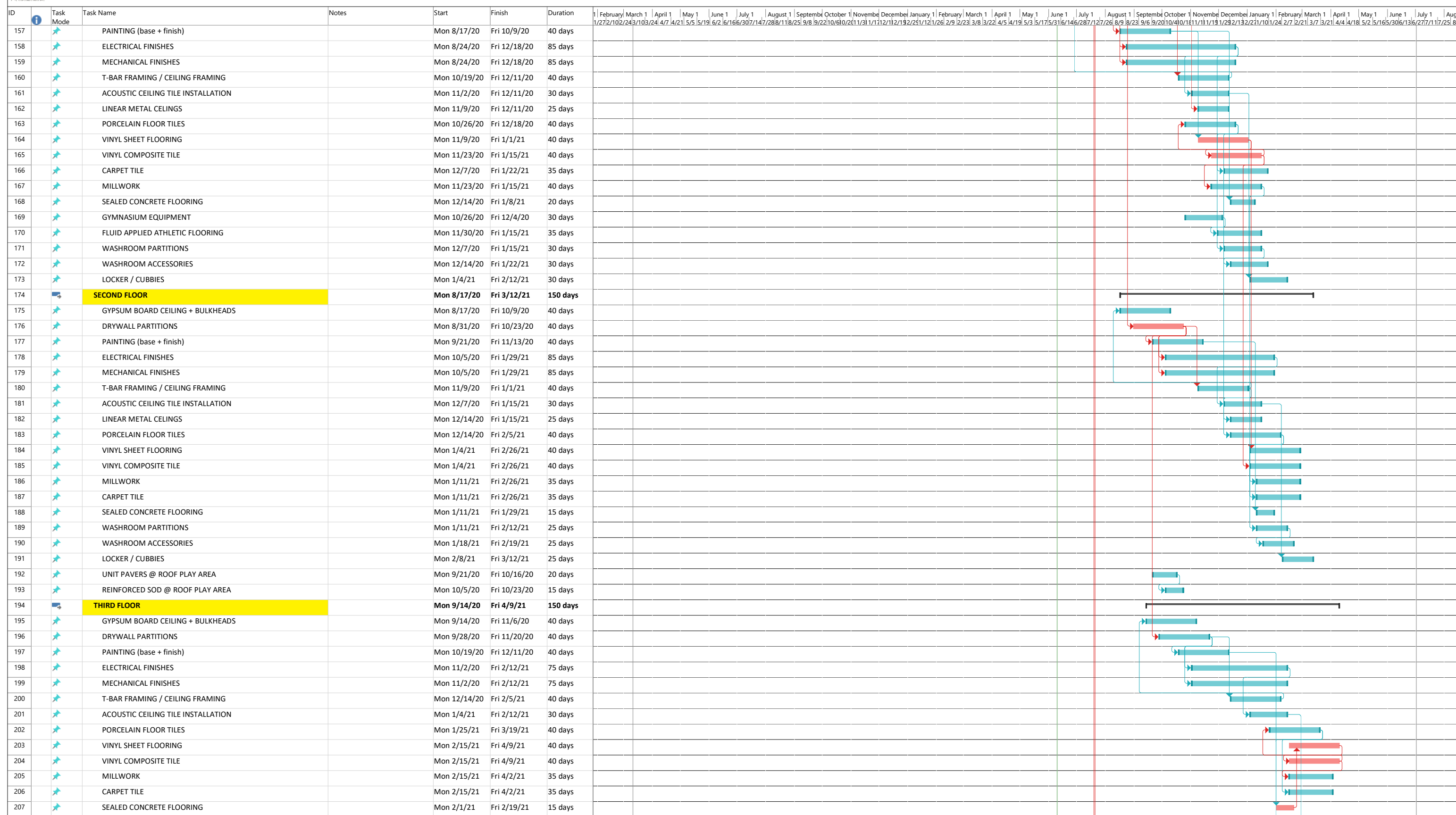
| | | | | | | |
|-----------|-----------------|--------------------|-----------------------|----------------|--------------------|-----------------|
| Task | Summary | Inactive Milestone | Duration-only | Start-only | External Milestone | Critical Split |
| Split | Project Summary | Inactive Summary | Manual Summary Rollup | Finish-only | Deadline | Progress |
| Milestone | Inactive Task | Manual Task | Manual Summary | External Tasks | Critical | Manual Progress |

Page 3

| ID | Task Mode | Task Name | Notes | Start | Finish | Duration | Gantt Chart Timeline (Feb 2020 - Aug 2021) | | | | | | | | | | | | | | | | | | | | | | | | | | | |
|-----|-----------|---|-------|--------------|--------------|----------|--|--|--|--|--|--|--|--|--|--|--|--|--|--|--|--|--|--|--|--|--|--|--|--|--|--|--|--|
| 106 | Task | MASONRY PARRAPET HIGH ROOFS | | Fri 6/19/20 | Thu 7/23/20 | 25 days | [Gantt bar from 6/19/20 to 7/23/20] | | | | | | | | | | | | | | | | | | | | | | | | | | | |
| 107 | Task | STEEL FRAMING AT PARRAPETS LOW ROOF | | Mon 7/6/20 | Fri 7/24/20 | 15 days | [Gantt bar from 7/6/20 to 7/24/20] | | | | | | | | | | | | | | | | | | | | | | | | | | | |
| 108 | Task | STEEL FRAMING AT PARRAPETS HIGH ROOF | | Mon 7/27/20 | Fri 8/14/20 | 15 days | [Gantt bar from 7/27/20 to 8/14/20] | | | | | | | | | | | | | | | | | | | | | | | | | | | |
| 109 | Task | LIGHT GAGE STEEL STUD PARAPPETS LOW ROOF | | Mon 7/13/20 | Fri 8/7/20 | 20 days | [Gantt bar from 7/13/20 to 8/7/20] | | | | | | | | | | | | | | | | | | | | | | | | | | | |
| 110 | Task | LIGHT GAGE STEEL STUD PARAPPETS HIGH ROOF | | Mon 7/27/20 | Fri 8/21/20 | 20 days | [Gantt bar from 7/27/20 to 8/21/20] | | | | | | | | | | | | | | | | | | | | | | | | | | | |
| 111 | Task | ELEVATOR SHAFT WALLS | | Mon 7/27/20 | Fri 8/7/20 | 10 days | [Gantt bar from 7/27/20 to 8/7/20] | | | | | | | | | | | | | | | | | | | | | | | | | | | |
| 112 | Task | ROOF TYPE R4 & R3 | | Mon 7/6/20 | Fri 8/28/20 | 40 days | [Gantt bar from 7/6/20 to 8/28/20] | | | | | | | | | | | | | | | | | | | | | | | | | | | |
| 113 | Task | ROOF TYPE R1 & R2 | | Mon 7/6/20 | Fri 8/28/20 | 40 days | [Gantt bar from 7/6/20 to 8/28/20] | | | | | | | | | | | | | | | | | | | | | | | | | | | |
| 114 | Task | RTU INSTALL | | Mon 8/3/20 | Fri 8/7/20 | 5 days | [Gantt bar from 8/3/20 to 8/7/20] | | | | | | | | | | | | | | | | | | | | | | | | | | | |
| 115 | Summary | BUILDING ENVELOPE | | Mon 7/13/20 | Fri 12/4/20 | 105 days | [Summary bar from 7/13/20 to 12/4/20] | | | | | | | | | | | | | | | | | | | | | | | | | | | |
| 116 | Summary | SOUTH ELEVATION | | Mon 7/13/20 | Fri 10/9/20 | 65 days | [Summary bar from 7/13/20 to 10/9/20] | | | | | | | | | | | | | | | | | | | | | | | | | | | |
| 117 | Task | CURTAIN WALL / ALUMINUM WINDOWS | | Mon 7/13/20 | Fri 8/7/20 | 20 days | [Gantt bar from 7/13/20 to 8/7/20] | | | | | | | | | | | | | | | | | | | | | | | | | | | |
| 118 | Task | SPRAY FOAM INSULATION | | Mon 7/20/20 | Fri 8/7/20 | 15 days | [Gantt bar from 7/20/20 to 8/7/20] | | | | | | | | | | | | | | | | | | | | | | | | | | | |
| 119 | Task | BRICK VENEER | | Mon 7/27/20 | Fri 9/11/20 | 35 days | [Gantt bar from 7/27/20 to 9/11/20] | | | | | | | | | | | | | | | | | | | | | | | | | | | |
| 120 | Task | METAL WALL PANEL | | Mon 8/3/20 | Fri 8/28/20 | 20 days | [Gantt bar from 8/3/20 to 8/28/20] | | | | | | | | | | | | | | | | | | | | | | | | | | | |
| 121 | Task | ALUMINUM COMPOSITE PANEL | | Mon 8/17/20 | Fri 9/11/20 | 20 days | [Gantt bar from 8/17/20 to 9/11/20] | | | | | | | | | | | | | | | | | | | | | | | | | | | |
| 122 | Task | SIGHT SCREEN | | Mon 9/28/20 | Fri 10/9/20 | 10 days | [Gantt bar from 9/28/20 to 10/9/20] | | | | | | | | | | | | | | | | | | | | | | | | | | | |
| 123 | Task | SUN CONTROL DEVICES | | Mon 9/28/20 | Fri 10/9/20 | 10 days | [Gantt bar from 9/28/20 to 10/9/20] | | | | | | | | | | | | | | | | | | | | | | | | | | | |
| 124 | Summary | WEST ELEVATION | | Mon 7/20/20 | Fri 10/9/20 | 60 days | [Summary bar from 7/20/20 to 10/9/20] | | | | | | | | | | | | | | | | | | | | | | | | | | | |
| 125 | Task | CURTAIN WALL / ALUMINUM WINDOWS | | Mon 7/20/20 | Fri 8/14/20 | 20 days | [Gantt bar from 7/20/20 to 8/14/20] | | | | | | | | | | | | | | | | | | | | | | | | | | | |
| 126 | Task | SPRAY FOAM INSULATION | | Mon 7/27/20 | Fri 8/14/20 | 15 days | [Gantt bar from 7/27/20 to 8/14/20] | | | | | | | | | | | | | | | | | | | | | | | | | | | |
| 127 | Task | BRICK VENEER | | Mon 8/3/20 | Fri 9/18/20 | 35 days | [Gantt bar from 8/3/20 to 9/18/20] | | | | | | | | | | | | | | | | | | | | | | | | | | | |
| 128 | Task | METAL WALL PANEL | | Mon 9/7/20 | Fri 10/2/20 | 20 days | [Gantt bar from 9/7/20 to 10/2/20] | | | | | | | | | | | | | | | | | | | | | | | | | | | |
| 129 | Task | ALUMINUM COMPOSITE PANEL | | Mon 9/14/20 | Fri 10/9/20 | 20 days | [Gantt bar from 9/14/20 to 10/9/20] | | | | | | | | | | | | | | | | | | | | | | | | | | | |
| 130 | Task | SUN CONTROL DEVICES | | Mon 9/28/20 | Fri 10/9/20 | 10 days | [Gantt bar from 9/28/20 to 10/9/20] | | | | | | | | | | | | | | | | | | | | | | | | | | | |
| 131 | Summary | NORTH ELEVATION | | Mon 7/27/20 | Fri 10/30/20 | 70 days | [Summary bar from 7/27/20 to 10/30/20] | | | | | | | | | | | | | | | | | | | | | | | | | | | |
| 132 | Task | CURTAIN WALL / ALUMINUM WINDOWS | | Mon 7/27/20 | Fri 8/28/20 | 25 days | [Gantt bar from 7/27/20 to 8/28/20] | | | | | | | | | | | | | | | | | | | | | | | | | | | |
| 133 | Task | SPRAY FOAM INSULATION | | Mon 8/3/20 | Fri 8/21/20 | 15 days | [Gantt bar from 8/3/20 to 8/21/20] | | | | | | | | | | | | | | | | | | | | | | | | | | | |
| 134 | Task | BRICK VENEER | | Mon 8/10/20 | Fri 9/25/20 | 35 days | [Gantt bar from 8/10/20 to 9/25/20] | | | | | | | | | | | | | | | | | | | | | | | | | | | |
| 135 | Task | ALUMINUM COMPOSITE PANEL | | Mon 10/5/20 | Fri 10/30/20 | 20 days | [Gantt bar from 10/5/20 to 10/30/20] | | | | | | | | | | | | | | | | | | | | | | | | | | | |
| 136 | Task | METAL WALL PANEL | | Mon 10/5/20 | Fri 10/30/20 | 20 days | [Gantt bar from 10/5/20 to 10/30/20] | | | | | | | | | | | | | | | | | | | | | | | | | | | |
| 137 | Summary | EAST ELEVATION | | Mon 8/3/20 | Fri 12/4/20 | 90 days | [Summary bar from 8/3/20 to 12/4/20] | | | | | | | | | | | | | | | | | | | | | | | | | | | |
| 138 | Task | CURTAIN WALL / ALUMINUM WINDOWS | | Mon 8/3/20 | Fri 9/4/20 | 25 days | [Gantt bar from 8/3/20 to 9/4/20] | | | | | | | | | | | | | | | | | | | | | | | | | | | |
| 139 | Task | SPRAY FOAM INSULATION | | Mon 8/10/20 | Fri 8/28/20 | 15 days | [Gantt bar from 8/10/20 to 8/28/20] | | | | | | | | | | | | | | | | | | | | | | | | | | | |
| 140 | Task | BRICK VENEER | | Mon 8/17/20 | Fri 10/2/20 | 35 days | [Gantt bar from 8/17/20 to 10/2/20] | | | | | | | | | | | | | | | | | | | | | | | | | | | |
| 141 | Task | METAL WALL PANEL | | Mon 10/19/20 | Fri 11/13/20 | 20 days | [Gantt bar from 10/19/20 to 11/13/20] | | | | | | | | | | | | | | | | | | | | | | | | | | | |
| 142 | Task | ALUMINUM COMPOSITE PANEL | | Mon 11/9/20 | Fri 12/4/20 | 20 days | [Gantt bar from 11/9/20 to 12/4/20] | | | | | | | | | | | | | | | | | | | | | | | | | | | |
| 143 | Task | OVER HEAD DOOR | | Mon 11/23/20 | Fri 12/4/20 | 10 days | [Gantt bar from 11/23/20 to 12/4/20] | | | | | | | | | | | | | | | | | | | | | | | | | | | |
| 144 | Summary | FINISHES | | Mon 7/6/20 | Fri 4/9/21 | 200 days | [Summary bar from 7/6/20 to 4/9/21] | | | | | | | | | | | | | | | | | | | | | | | | | | | |
| 145 | Summary | BASEMENT LEVEL | | Mon 7/27/20 | Tue 10/27/20 | 67 days | [Summary bar from 7/27/20 to 10/27/20] | | | | | | | | | | | | | | | | | | | | | | | | | | | |
| 146 | Task | PAINTING | | Mon 7/27/20 | Fri 8/28/20 | 25 days | [Gantt bar from 7/27/20 to 8/28/20] | | | | | | | | | | | | | | | | | | | | | | | | | | | |
| 147 | Task | METAL ROOF AT RAMP | | Mon 8/10/20 | Fri 9/4/20 | 20 days | [Gantt bar from 8/10/20 to 9/4/20] | | | | | | | | | | | | | | | | | | | | | | | | | | | |
| 148 | Task | ELECTRICAL FINISHES | | Mon 8/3/20 | Fri 9/25/20 | 40 days | [Gantt bar from 8/3/20 to 9/25/20] | | | | | | | | | | | | | | | | | | | | | | | | | | | |
| 149 | Task | MECHANICAL FINISHES | | Mon 8/3/20 | Fri 9/25/20 | 40 days | [Gantt bar from 8/3/20 to 9/25/20] | | | | | | | | | | | | | | | | | | | | | | | | | | | |
| 150 | Task | CEILING - SEMI RIGID INSULATION W/ WHITE PLASTIC INSTALLATION | | Mon 9/7/20 | Fri 10/2/20 | 20 days | [Gantt bar from 9/7/20 to 10/2/20] | | | | | | | | | | | | | | | | | | | | | | | | | | | |
| 151 | Task | PORCELAIN FLOOR TILES | | Mon 10/5/20 | Fri 10/16/20 | 10 days | [Gantt bar from 10/5/20 to 10/16/20] | | | | | | | | | | | | | | | | | | | | | | | | | | | |
| 152 | Task | SEALED CONCRETE FLOORING | | Mon 10/5/20 | Fri 10/9/20 | 5 days | [Gantt bar from 10/5/20 to 10/9/20] | | | | | | | | | | | | | | | | | | | | | | | | | | | |
| 153 | Task | BIKE STORAGE ENCLOSURE | | Mon 10/26/20 | Tue 10/27/20 | 2 days | [Gantt bar from 10/26/20 to 10/27/20] | | | | | | | | | | | | | | | | | | | | | | | | | | | |
| 154 | Summary | GROUND FLOOR | | Mon 7/6/20 | Fri 2/12/21 | 160 days | [Summary bar from 7/6/20 to 2/12/21] | | | | | | | | | | | | | | | | | | | | | | | | | | | |
| 155 | Task | GYPSUM BOARD CEILING + BULKHEADS | | Mon 7/6/20 | Fri 8/28/20 | 40 days | [Gantt bar from 7/6/20 to 8/28/20] | | | | | | | | | | | | | | | | | | | | | | | | | | | |
| 156 | Task | DRYWALL PARTITIONS | | Mon 7/27/20 | Fri 9/18/20 | 40 days | [Gantt bar from 7/27/20 to 9/18/20] | | | | | | | | | | | | | | | | | | | | | | | | | | | |

Project: Redevelopment of Dav Date: Wed 6/10/20

| | | | | | | | | | | | | | |
|-----------|--|-----------------|--|--------------------|--|-----------------------|--|----------------|--|--------------------|--|-----------------|--|
| Task | | Summary | | Inactive Milestone | | Duration-only | | Start-only | | External Milestone | | Critical Split | |
| Split | | Project Summary | | Inactive Summary | | Manual Summary Rollup | | Finish-only | | Deadline | | Progress | |
| Milestone | | Inactive Task | | Manual Task | | Manual Summary | | External Tasks | | Critical | | Manual Progress | |



| ID | Task Mode | Task Name | Notes | Start | Finish | Duration | Gantt Chart (Timeline from Feb 2020 to Aug 2021) | | | | | | | | | | | | | | | | | | | | | | | | | | | |
|-----|-----------|---|-------|--------------|--------------|----------|--|--|--|--|--|--|--|--|--|--|--|--|--|--|--|--|--|--|--|--|--|--|--|--|--|--|--|--|
| 208 | ✈ | WASHROOM PARTITIONS | | Mon 2/8/21 | Fri 3/12/21 | 25 days | [Gantt bar: Feb 8 - Mar 6, 2021] | | | | | | | | | | | | | | | | | | | | | | | | | | | |
| 209 | ✈ | WASHROOM ACCESSORIES | | Mon 2/8/21 | Fri 3/12/21 | 25 days | [Gantt bar: Feb 8 - Mar 6, 2021] | | | | | | | | | | | | | | | | | | | | | | | | | | | |
| 210 | ✈ | LOCKERS / CUBBIES | | Mon 3/1/21 | Fri 4/2/21 | 25 days | [Gantt bar: Mar 1 - Mar 30, 2021] | | | | | | | | | | | | | | | | | | | | | | | | | | | |
| 211 | ✈ | UNIT PAVERS @ ROOF PLAY AREA | | Mon 10/5/20 | Fri 10/30/20 | 20 days | [Gantt bar: Oct 5 - Oct 24, 2020] | | | | | | | | | | | | | | | | | | | | | | | | | | | |
| 212 | ✈ | REINFORCED SOD @ ROOF PLAY AREA | | Mon 10/12/20 | Fri 10/30/20 | 15 days | [Gantt bar: Oct 12 - Oct 26, 2020] | | | | | | | | | | | | | | | | | | | | | | | | | | | |
| 213 | ✈ | WOOD STAGE CONSTRUCTION @ ROOF PLAY AREA | | Mon 10/19/20 | Fri 11/6/20 | 15 days | [Gantt bar: Oct 19 - Nov 3, 2020] | | | | | | | | | | | | | | | | | | | | | | | | | | | |
| 214 | ✈ | EXTERIOR FURNISHINGS @ ROOF PLAY AREA (BENCHES, TIRES, PLANTERS, DIP BENCH) | | Mon 10/26/20 | Fri 11/13/20 | 15 days | [Gantt bar: Oct 26 - Nov 10, 2020] | | | | | | | | | | | | | | | | | | | | | | | | | | | |
| 215 | ✈ | ELEVATOR INSTALL | | Mon 10/5/20 | Fri 11/27/20 | 40 days | [Gantt bar: Oct 5 - Nov 20, 2020] | | | | | | | | | | | | | | | | | | | | | | | | | | | |
| 216 | ✈ | EXTERIOR SITE WORKS | | Wed 4/1/20 | Fri 11/20/20 | 168 days | [Gantt bar: Apr 1 - Nov 20, 2020] | | | | | | | | | | | | | | | | | | | | | | | | | | | |
| 217 | ✈ | DAVISVILLE AVENUE / MILLWOOD ROAD | | Wed 4/1/20 | Fri 11/20/20 | 168 days | [Gantt bar: Apr 1 - Nov 20, 2020] | | | | | | | | | | | | | | | | | | | | | | | | | | | |
| 218 | ✓ ✈ | STORM SEWER | | Wed 4/1/20 | Fri 5/22/20 | 38 days | [Gantt bar: Apr 1 - May 22, 2020] | | | | | | | | | | | | | | | | | | | | | | | | | | | |
| 219 | ✓ ✈ | SANITARY SEWER | | Wed 4/1/20 | Thu 4/30/20 | 22 days | [Gantt bar: Apr 1 - Apr 30, 2020] | | | | | | | | | | | | | | | | | | | | | | | | | | | |
| 220 | ✓ ✈ | WATERMAIN | | Wed 4/1/20 | Fri 4/17/20 | 13 days | [Gantt bar: Apr 1 - Apr 17, 2020] | | | | | | | | | | | | | | | | | | | | | | | | | | | |
| 221 | ✈ | MANHOLE + CATCH BASINS | | Wed 4/1/20 | Fri 6/19/20 | 58 days | [Gantt bar: Apr 1 - Jun 19, 2020] | | | | | | | | | | | | | | | | | | | | | | | | | | | |
| 222 | ✈ | WATERPROOFING U/S PAVING AREAS | | Mon 7/27/20 | Fri 8/14/20 | 15 days | [Gantt bar: Jul 27 - Aug 11, 2020] | | | | | | | | | | | | | | | | | | | | | | | | | | | |
| 223 | ✈ | PERFORATED SUBDRAIN INSTALLATION FOR TURF FIELD | | Mon 8/10/20 | Fri 8/28/20 | 15 days | [Gantt bar: Aug 10 - Aug 28, 2020] | | | | | | | | | | | | | | | | | | | | | | | | | | | |
| 224 | ✈ | ARTIFICIAL TURF INSTALLATION | | Mon 10/5/20 | Fri 10/16/20 | 10 days | [Gantt bar: Oct 5 - Oct 16, 2020] | | | | | | | | | | | | | | | | | | | | | | | | | | | |
| 225 | ✈ | CONCRETE CURBS | | Mon 8/24/20 | Fri 9/4/20 | 10 days | [Gantt bar: Aug 24 - Sep 4, 2020] | | | | | | | | | | | | | | | | | | | | | | | | | | | |
| 226 | ✈ | CONCRETE SIDEWALK PAVING | | Mon 9/7/20 | Fri 9/18/20 | 10 days | [Gantt bar: Sep 7 - Sep 18, 2020] | | | | | | | | | | | | | | | | | | | | | | | | | | | |
| 227 | ✈ | PLANTER CURBS | | Mon 9/21/20 | Fri 10/2/20 | 10 days | [Gantt bar: Sep 21 - Oct 2, 2020] | | | | | | | | | | | | | | | | | | | | | | | | | | | |
| 228 | ✈ | PERFORATED SUBDRAIN INSTALLATION FOR LANDSCAPE | | Mon 9/28/20 | Fri 10/2/20 | 5 days | [Gantt bar: Sep 28 - Oct 3, 2020] | | | | | | | | | | | | | | | | | | | | | | | | | | | |
| 229 | ✈ | SAND PIT INSTALLATIONS - LONG JUMP / PLAY AREAS | | Mon 10/5/20 | Fri 10/9/20 | 5 days | [Gantt bar: Oct 5 - Oct 9, 2020] | | | | | | | | | | | | | | | | | | | | | | | | | | | |
| 230 | ✈ | ASPHALT PAVING (base coat) | | Mon 9/28/20 | Fri 10/9/20 | 10 days | [Gantt bar: Sep 28 - Oct 9, 2020] | | | | | | | | | | | | | | | | | | | | | | | | | | | |
| 231 | ✈ | ASPHALT PAVING ON CONCL SLAB (base coat) | | Mon 10/12/20 | Fri 10/23/20 | 10 days | [Gantt bar: Oct 12 - Oct 23, 2020] | | | | | | | | | | | | | | | | | | | | | | | | | | | |
| 232 | ✈ | BASKETBALL COURT ASPHALT PAVING | | Mon 10/26/20 | Fri 10/30/20 | 5 days | [Gantt bar: Oct 26 - Oct 30, 2020] | | | | | | | | | | | | | | | | | | | | | | | | | | | |
| 233 | ✈ | LONG JUMP ASPHALT PAVING | | Mon 11/2/20 | Fri 11/6/20 | 5 days | [Gantt bar: Nov 2 - Nov 6, 2020] | | | | | | | | | | | | | | | | | | | | | | | | | | | |
| 234 | ✈ | ASPHALT PAVING (final coat all areas) | | Mon 11/9/20 | Fri 11/13/20 | 5 days | [Gantt bar: Nov 9 - Nov 13, 2020] | | | | | | | | | | | | | | | | | | | | | | | | | | | |
| 235 | ✈ | LINE PAINTINGS | | Mon 11/16/20 | Fri 11/20/20 | 5 days | [Gantt bar: Nov 16 - Nov 20, 2020] | | | | | | | | | | | | | | | | | | | | | | | | | | | |
| 236 | ✈ | FENCE INSTALLATION | | Mon 9/21/20 | Fri 10/9/20 | 15 days | [Gantt bar: Sep 21 - Oct 9, 2020] | | | | | | | | | | | | | | | | | | | | | | | | | | | |
| 237 | ✈ | TOPSOIL | | Mon 10/5/20 | Fri 10/16/20 | 10 days | [Gantt bar: Oct 5 - Oct 16, 2020] | | | | | | | | | | | | | | | | | | | | | | | | | | | |
| 238 | ✈ | PLANTING | | Mon 10/12/20 | Fri 10/23/20 | 10 days | [Gantt bar: Oct 12 - Oct 23, 2020] | | | | | | | | | | | | | | | | | | | | | | | | | | | |
| 239 | ✈ | SODDING | | Mon 10/26/20 | Fri 10/30/20 | 5 days | [Gantt bar: Oct 26 - Oct 30, 2020] | | | | | | | | | | | | | | | | | | | | | | | | | | | |
| 240 | ✈ | REINFORCED SOD @ EXTERIOR PLAY AREAS | | Mon 11/2/20 | Fri 11/6/20 | 5 days | [Gantt bar: Nov 2 - Nov 6, 2020] | | | | | | | | | | | | | | | | | | | | | | | | | | | |
| 241 | ✈ | WOOD CURBS / FURNITURE | | Mon 11/2/20 | Fri 11/6/20 | 5 days | [Gantt bar: Nov 2 - Nov 6, 2020] | | | | | | | | | | | | | | | | | | | | | | | | | | | |
| 242 | ✈ | | | | | | | | | | | | | | | | | | | | | | | | | | | | | | | | | |
| 243 | ✈ | CONSULTANT DEFICIENCY REVIEWS | | Mon 2/1/21 | Fri 2/26/21 | 20 days | [Gantt bar: Feb 1 - Feb 26, 2021] | | | | | | | | | | | | | | | | | | | | | | | | | | | |
| 244 | ✈ | DEFICIENCY CORRECTION | | Mon 3/1/21 | Fri 6/11/21 | 75 days | [Gantt bar: Mar 1 - Jun 11, 2021] | | | | | | | | | | | | | | | | | | | | | | | | | | | |
| 245 | ✈ | CONSULTANT DEFICIENCY RE-REVIEW / SIGN-OFF | | Mon 5/3/21 | Fri 5/28/21 | 20 days | [Gantt bar: May 3 - May 28, 2021] | | | | | | | | | | | | | | | | | | | | | | | | | | | |
| 246 | ✈ | VERIFICATION + COMMISSIONING + BALANCING | | Mon 3/1/21 | Fri 6/11/21 | 75 days | [Gantt bar: Mar 1 - Jun 11, 2021] | | | | | | | | | | | | | | | | | | | | | | | | | | | |
| 247 | ✈ | CONSTRUCTION CLEAN | | Mon 5/24/21 | Fri 6/11/21 | 15 days | [Gantt bar: May 24 - Jun 11, 2021] | | | | | | | | | | | | | | | | | | | | | | | | | | | |
| 248 | ✈ | CONSULTANT OCCUPANCY REVIEWS | | Mon 6/14/21 | Fri 6/18/21 | 5 days | [Gantt bar: Jun 14 - Jun 18, 2021] | | | | | | | | | | | | | | | | | | | | | | | | | | | |
| 249 | ✈ | OCCUPANCY | | Mon 6/28/21 | Mon 6/28/21 | 1 day | [Gantt bar: Jun 28, 2021] | | | | | | | | | | | | | | | | | | | | | | | | | | | |
| 250 | ✈ | SUBSTANTIAL | | Thu 7/1/21 | Thu 7/1/21 | 1 day | [Gantt bar: Jul 1, 2021] | | | | | | | | | | | | | | | | | | | | | | | | | | | |

Project: Redevelopment of Dav Date: Wed 6/10/20

| | | | | | | | | | | | | | |
|-----------|--|-----------------|--|--------------------|--|-----------------------|--|----------------|--|--------------------|--|-----------------|--|
| Task | | Summary | | Inactive Milestone | | Duration-only | | Start-only | | External Milestone | | Critical Split | |
| Split | | Project Summary | | Inactive Summary | | Manual Summary Rollup | | Finish-only | | Deadline | | Progress | |
| Milestone | | Inactive Task | | Manual Task | | Manual Summary | | External Tasks | | Critical | | Manual Progress | |