



Baycrest Public School Relocation to the Sir Sandford Fleming Site

PROJECT BULLETIN October, 2019

PREAMBLE:

- The TDSB and School Community are moving closer to the relocation of Baycrest Public School to a new site.
- This Bulletin is intended to inform the community regarding development of key aspects of this complex project. It is intended to provide a platform for information about the following:
 - THE NEW SCHOOL FACILITY – A summary of key aspects of Baycrest in the new location.
 - THE TRANSITION – Information regarding the move to the new home.
- This is not a closed list and the project Bulletin is intended to be a flexible document.
- Items will be added as the project evolves.



THE NEW FACILITY – Baycrest PS at Sir Sandford Fleming

In September 2020, the existing facility at 145 Baycrest Avenue will close. The current school will relocate to the site of Sir Sandford Fleming, which is in the process of being refurbished. The key project components are:

- General room and building improvements necessary for the school program.
- Relocation of the existing Childcare facility – into rooms that meet Provincial licensing standards
- Creation of Full-Day Kindergarten spaces and related outdoor play areas
- Site development - the creation of outdoor play space and other improvements necessary for an Elementary School.

OVERALL CONTEXT:

It should be noted that the use of Sir Sandford Fleming will be shared with St Margaret Catholic School (TCDSB), who currently occupy space in the building through a lease agreement with TDSB.

This shared use is intended to last until September 2022, at which time St Margaret will move into a new facility.

St Margaret portion of the school –
Shown in blue



Baycrest PS Relocation – PROJECT BULLETIN-October, 2019

GROUND FLOOR PLAN:

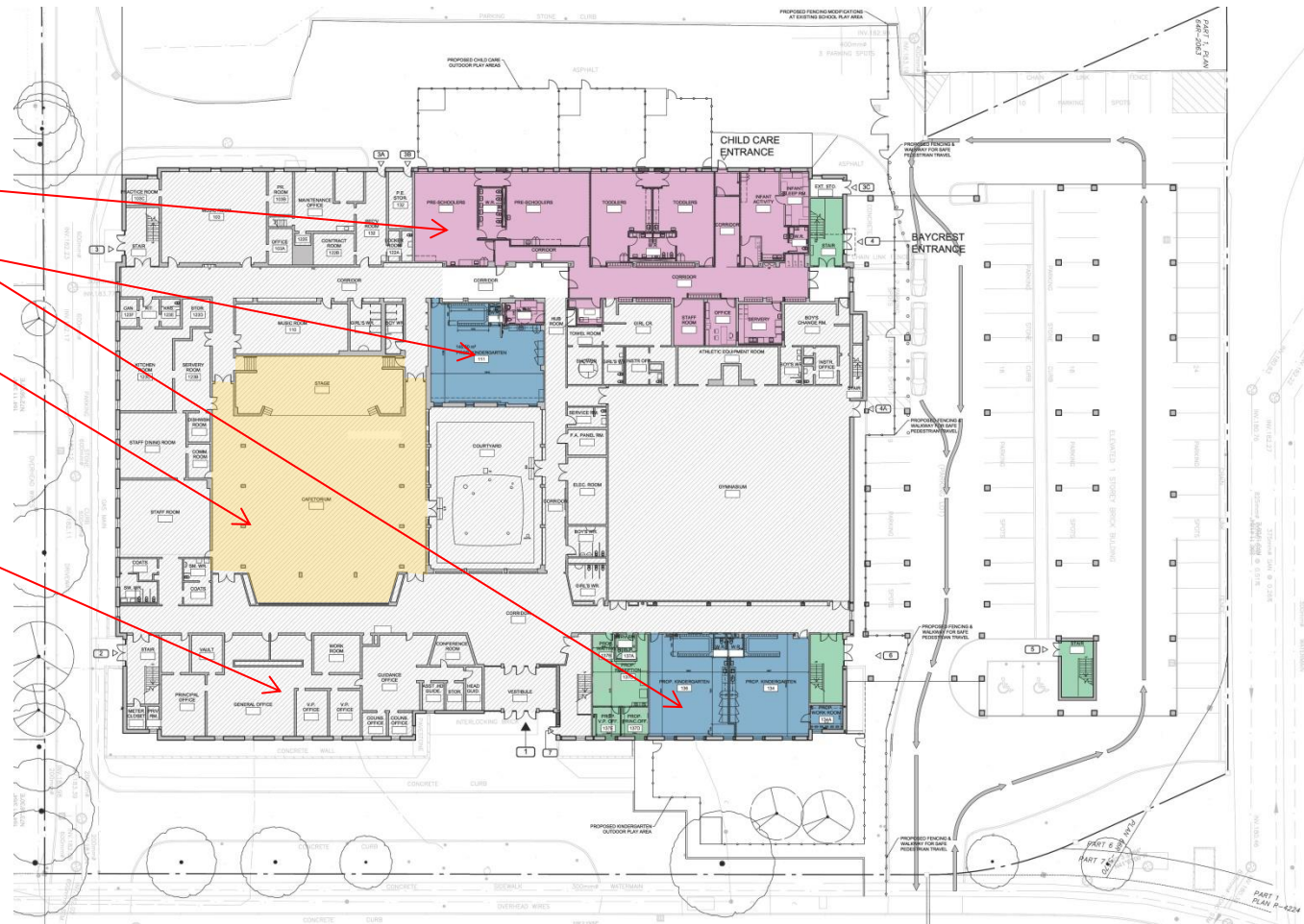
Key Elements:

Baycrest Childcare

Baycrest – Full-Day Kindergarten

Shared element – “cafetorium”

TCDsb – St Margaret Catholic School



Baycrest PS Relocation – PROJECT BULLETIN-October, 2019

SECOND FLOOR PLAN:

Key Elements:

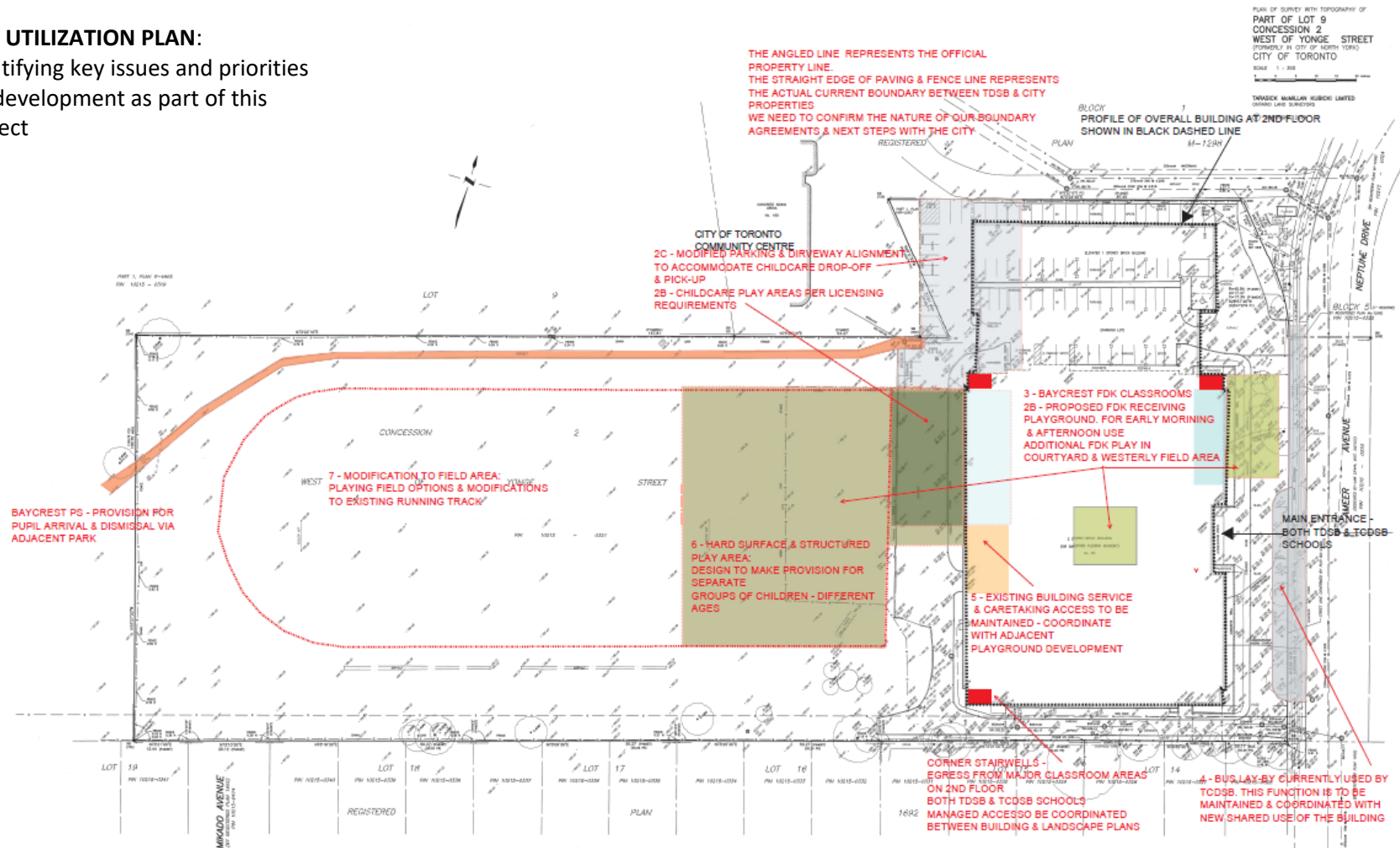
TDSB – Baycrest Classroom Space – shown in yellow

TCDSB – St Margaret Catholic School – shown in brown



SITE UTILIZATION PLAN:

Identifying key issues and priorities for development as part of this project



TRANSITION – Baycrest PS to Sir Sandford Fleming

The work to improve the existing building and prepare it to receive Baycrest PS has already begun.

- Roofing and Roof Deck replacements have been carried out during the past two summers.
- The replacement of existing windows has also begun this summer, with the future Baycrest area largely complete. The second phase of this work – completing full building window replacement – has begun.
- Room improvements in consultation with the Principal (and through her the community) have been prepared and are currently being priced to determine budget compliance.
- The design of the Childcare facility has been approved by the operator.



NEXT STEPS

There will be an opportunity for parent/caregiver input on the overall site plan, site utilization.

This piece is still in development by the consultant team and we will provide an update through a separate Bulletin.

In the meantime, please forward your questions through Principal Stewart.

