

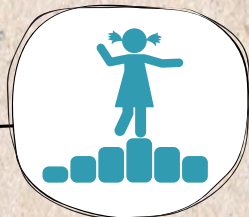
Overview

How to use this resource

This resource will guide the integration of loose parts and loose parts play into your school grounds.

Understand your site

Loose parts are a valuable addition to any outdoor play setting. Start collecting loose parts that will help to enhance your space!



Plan/Collecting parts

Ensure that there are combinations and diversity of parts within the space. This will provide a platform for multiple forms of learning and play.



Contact us

For further information regarding loose parts and how you can enhance your school ground play and learning environment contact:



Gail Bornstein / Gail.Bornstein@tdsb.on.ca / 647-227-3451

Safety

1

Understanding your site

- Identify which loose parts will help to enhance and benefit the play experience in the school ground
- Determine what objects will work in collaboration with existing features and spaces
- Understand that there is acceptable risk that comes along with loose parts play in the outdoor environment

2

Identifying the risks

- Understand what objects might cause potential risks, develop a series of guidelines on handling or moving the object
- Manage risk by encouraging and supporting students to take responsibility for safety within their space
- Allow students to create their own rules to encourage them to further develop their independence

3

Be Aware

- Be aware; observe the play going on within the space
- Identify potential issues or risks and be ready with a potential intervention
- Observe the play that occurs and be flexible with the management of the play, this will ensure that there continues to be open – ended play

Storage

1

Clean-up

- Encourage students to incorporate the “clean-up” of loose parts as a part of the free / loose parts play time
- Ensure that the loose parts are available for the next group of students and staff
- Preserve and maintain the loose parts for future use by cleaning-up, organizing and /or sorting the objects

2

Maintenance

- Care and continued maintenance of loose parts is to be based on the environmental conditions and the intensity use of the objects
- All materials will require maintenance at some point in time, this is to be determined by the staff facilitating loose parts play
- Regularly replenish and add to the selection of loose parts to encourage continued use and excitement with new and familiar objects

3

Storage

- Decide on a storage solution that ensures that the materials are accessible to the students and staff
- Storage allows staff to rotate the use of loose parts keeping things exciting and new for students
- Storage options include storage units, laundry baskets, milk crates, etc.

Loose Parts



LOOSE PARTS

FOR DIFFERENT TYPES OF PLAY

Play is necessary to the development of children at an emotional, physical, cognitive and social level. Loose parts are essential components to meet these developmental needs. Loose parts enhance play environments ensuring that children have the ability to be the creators, innovators, and animators of open-ended play.

Structured Play and Free Play

- **Structured Play:** Play that has a structured, directed and intended use. Play environments with equipment and fixed features limit creativity and imagination.
- **Free Play:** Play that is self-directed providing open-ended play. Loose parts are non-prescriptive elements that allow children to manipulate, create, and discover within their play environments.
- Provide the opportunity for a variety of different types of play to occur in one space.

What are Loose Parts?

- The “theory of loose parts” was developed in the 1970’s by an architect named Simon Nicholson.
- He believed that children love to interact with variables that can be adapted or manipulated, and that “loose parts” allowed for children to be creative and innovative in any environment.

Benefits of loose parts

- Create engaging and dynamic play and learning environments
- Open-ended learning through imagination, creativity, discovery, and experimentation.
- Students learn to take risks while expanding on personal skills and interests

Make sure to choose items from Sections A, B, & C to ensure a diverse selection of loose parts!

Section A



Experimental Play

This group of loose parts provides the opportunity for building, manipulation, discovery and creation. These objects will aid in social, physical, and cognitive development.



Cedar Blocks



Plastic Bottles



PVC Pipe



Milk Crates



Plastic Buckets



Plastic Rake



Bamboo Troughs



Trowel



Thick Rope



Watering Can

Section B



Ecological Play

Ecological and natural elements can be investigated for observation promoting inquiry-based learning and discovery within the play environment.



Stone



Pebbles



Leaves



Flowers



Shells



Seeds



Stumps



Pinecones

Section C



Imaginative Play

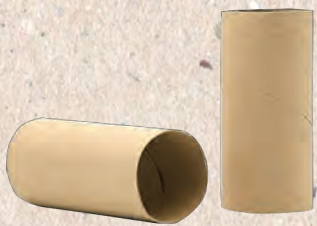
These objects allow students to let their imagination and creativity guide the play. These items provide the framework for creative play such as storytelling, drama, and imaginary worlds).



Hula Hoops



Cardboard Boxes



Cardboard Tubes



Fabric (Light Weight)



Funnels



Chalk



Tarps or Drop Cloths



Parachutes