

## **PROGRESS OF CONSTRUCTION WORK – 38%**

### **Zone A (historical York Memorial CI school footprint):**

- Auditorium steel and courtyard walls progressing. To be completed by the end of Summer 2025.
- Heritage masonry on south-east façade complete and scaffolding taken down.
- Window removals ongoing. New windows to be installed throughout.
- Ongoing mechanical, electrical, and sprinkler routing throughout.

#### Upcoming Work:

- Metal roof deck and new roof installation
- Supply and install of new windows
- Stair A at main vestibule rebuild
- West façade scaffold dismantle

### **Zone B (former 2 Trethewey administrative building):**

- Environmental abatement 80% complete
- Exterior wall pre-cast panel removal ongoing
- Ongoing mechanical, electrical, and sprinkler routing throughout

#### Upcoming Work:

- Install of new windows and cladding system
- Interior walls build up

### **Zone C (former Trethewey Annex):**

- Exterior Masonry block build up complete
- Interior masonry, overhead electrical, and overhead mechanical routing ongoing
- New exterior façade brick mock up reviewed and accepted

#### Upcoming Work:

- New windows install
- Brick veneer
- Full building enclosure

## **COMMUNITY UPDATE:**

The reconstruction of the consolidated school is beginning to take shape. Where the auditorium once stood and remained open as an excavation pit following demolition and removals, now stands the concrete and steel bones of the auditorium that is to take its place. The school's face from Eglinton is no longer concealed by retention towers and scaffolding, as period masonry is being completed and scaffolding dismantled. The former 2 Trethewey (Zone B) has been opened and gutted for reinstatement of new exterior windows and cladding and interior finishes. Zone C has been demolished, and the new program spaces are coming to life with new block walls going up and mechanical and electrical routing. Occupancy remains anticipated for September 2026.

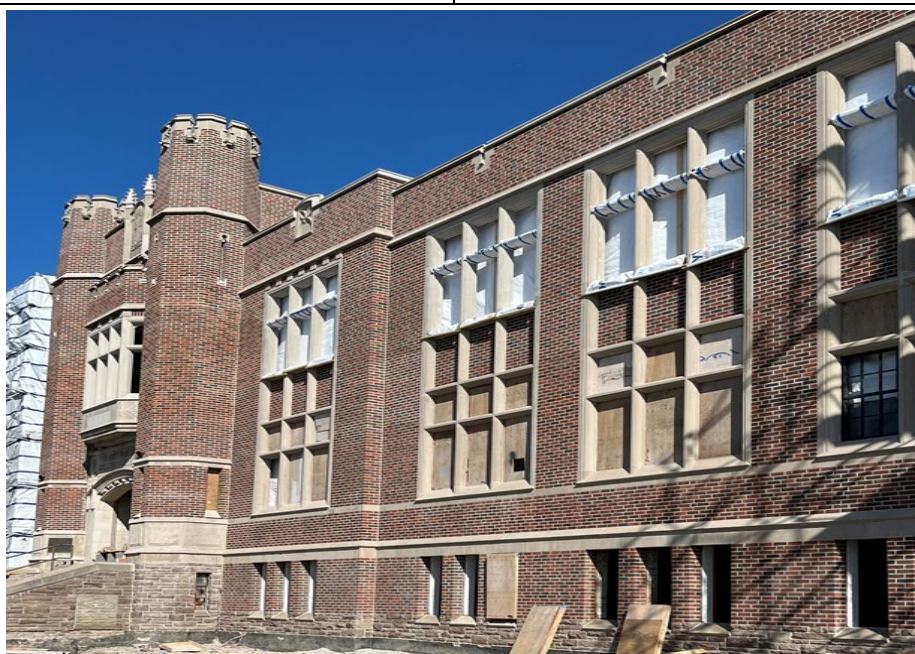
## CONSTRUCTION PROGRESS PHOTOS:



An overview of the auditorium steel installation – ZONE A



Plaster mock-up to be installed in reconstructed auditorium – ZONE A



South-east façade period masonry rebuild – ZONE A



## York Memorial Collegiate Institute Update

June 26, 2025



Window removals in progress to accommodate new operable windows. – ZONE A



Third floor block wall reconstruction – ZONE A



Pre-cast panel removal – ZONE B

## York Memorial Collegiate Institute Update

June 26, 2025



Interior block walls, window frame, mechanical routing, and electrical routing install in progress – ZONE C