

York Memorial CI- School Reconstruction

UPDATE

Community Meeting

Product #4 / #356

Land Acknowledgement

We acknowledge we are hosted on the lands of the Mississaugas of the Anishinaabe, the Haudenosaunee Confederacy and the Wendat. We also recognise the enduring presence of all First Nations, Métis and Inuit peoples.

Introductions

- **Liban Hassan**, Trustee, Ward 6, TDSB
- **Roni Felsen**, Superintendent
- **Donald Drummond**, Principal, YMCI and GHCI, TDSB
- **Maia Puccetti**, Executive Officer, Facility Services and Planning, TDSB
- **Prithula Prosun**, Manager, Project Dev. & Community Consultation, TDSB
- **Tom Schloessin**, Design Coordinator, TDSB
- **Jill Taylor**, Principal, THA Architects

Agenda

1.	Opening Remarks + Introductions	Roni Felsen - SOE Maia Puccetti - Exec. Officer
2.	School Update: Key messages	Donald Drummond - Principal Liban Hassan - Trustee
3.	Project Context & Design Update	Jill Taylor - THA Architects
3.	Project Update	Prithula Prosun - Capital Manager Tom Schloessin - Design Coordinator
4.	Questions and Answers	All
5.	Adjournment	Roni Felsen - SOE Maia Puccetti - Exec. Officer

Opening Remarks

Roni Felsen, Superintendent
Maia Puccetti, Executive Officer

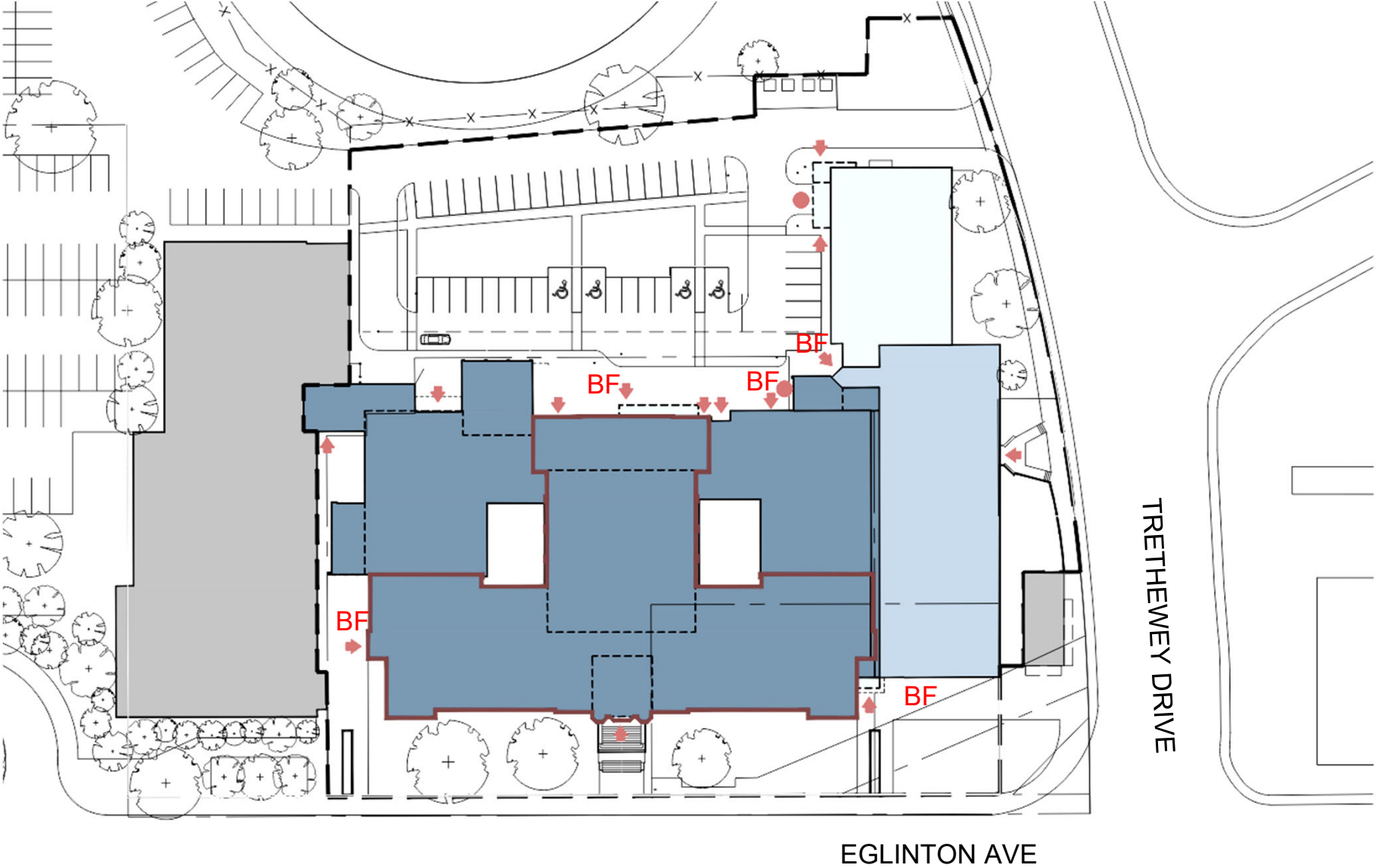
School Update: Key messages

Donald Drummond, Principal
Liban Hassan, Trustee

Project Context & Design Update

Jill Taylor
Principal, THA Architects

Site Plan



2019 Fire damage to 1929 structure and additions.



Post-Fire stabilization, dismantle & salvage.

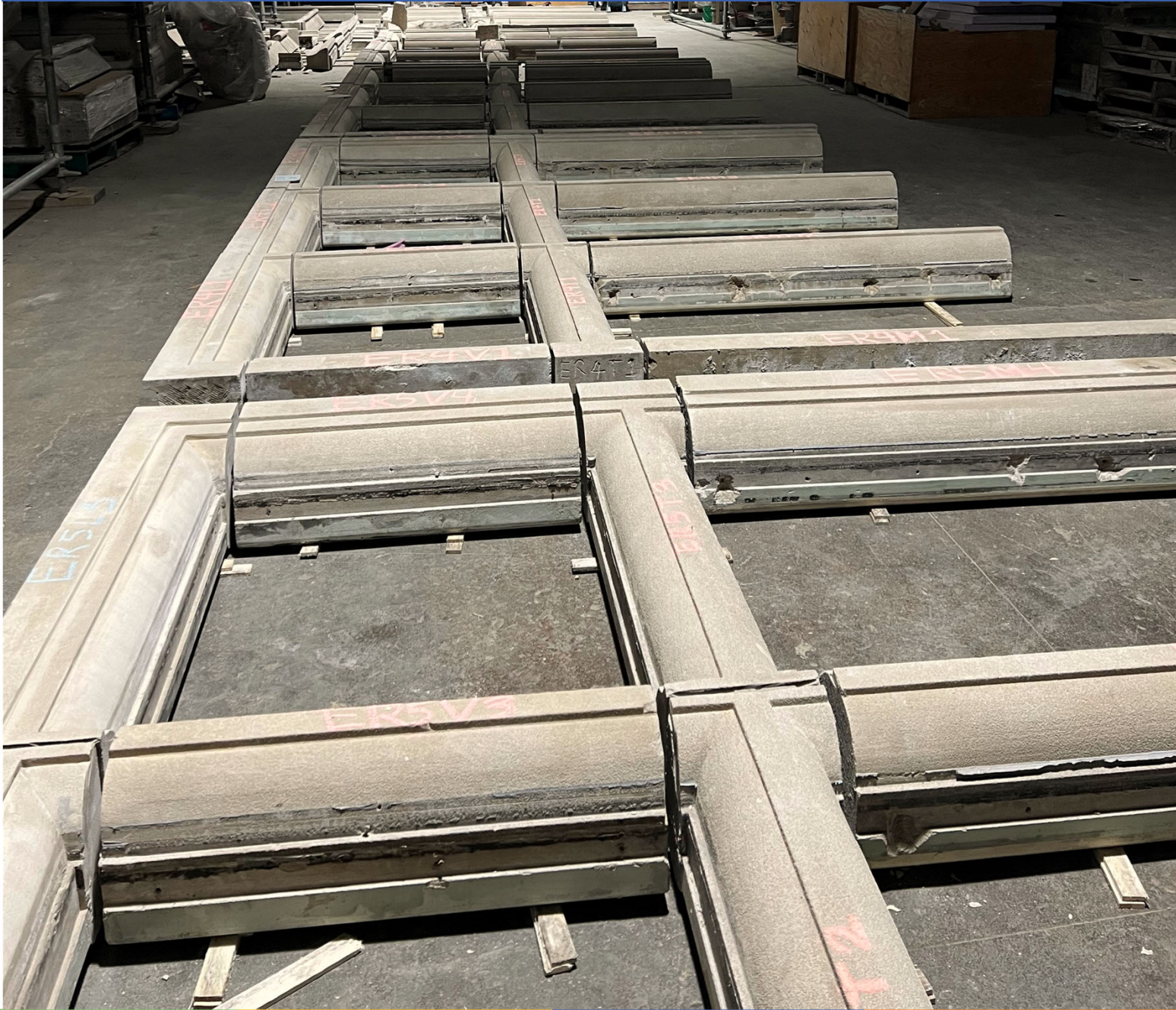


1929 Façade Stabilization, Remediation & Partial Rehabilitation





Restoration of the 1929 front façade east bay.



Review of salvaged limestone at CRL shop.

York Memorial Collegiate Institute – March 2023



Pre-fire view of east auditorium wall with stained glass.



Post-fire view of dismantled east auditorium wall.



Meeting at EGD studio for the restoration of the stained glass windows.



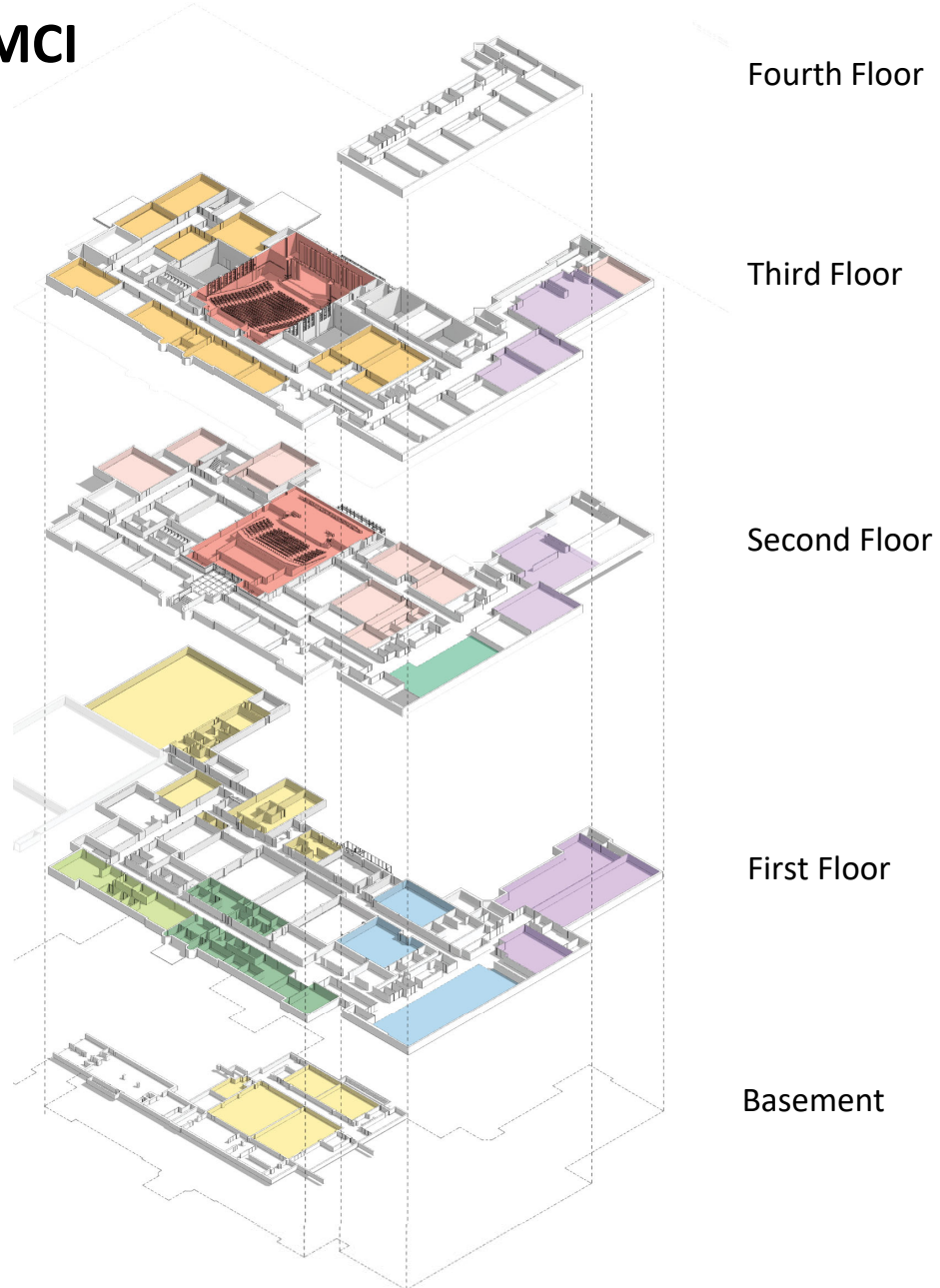
Above: Conservation of the John Hall mural to be reinstated in the foyer.

Left: Foyer post-fire with John Hall mural removed for conservation.

New Building Design

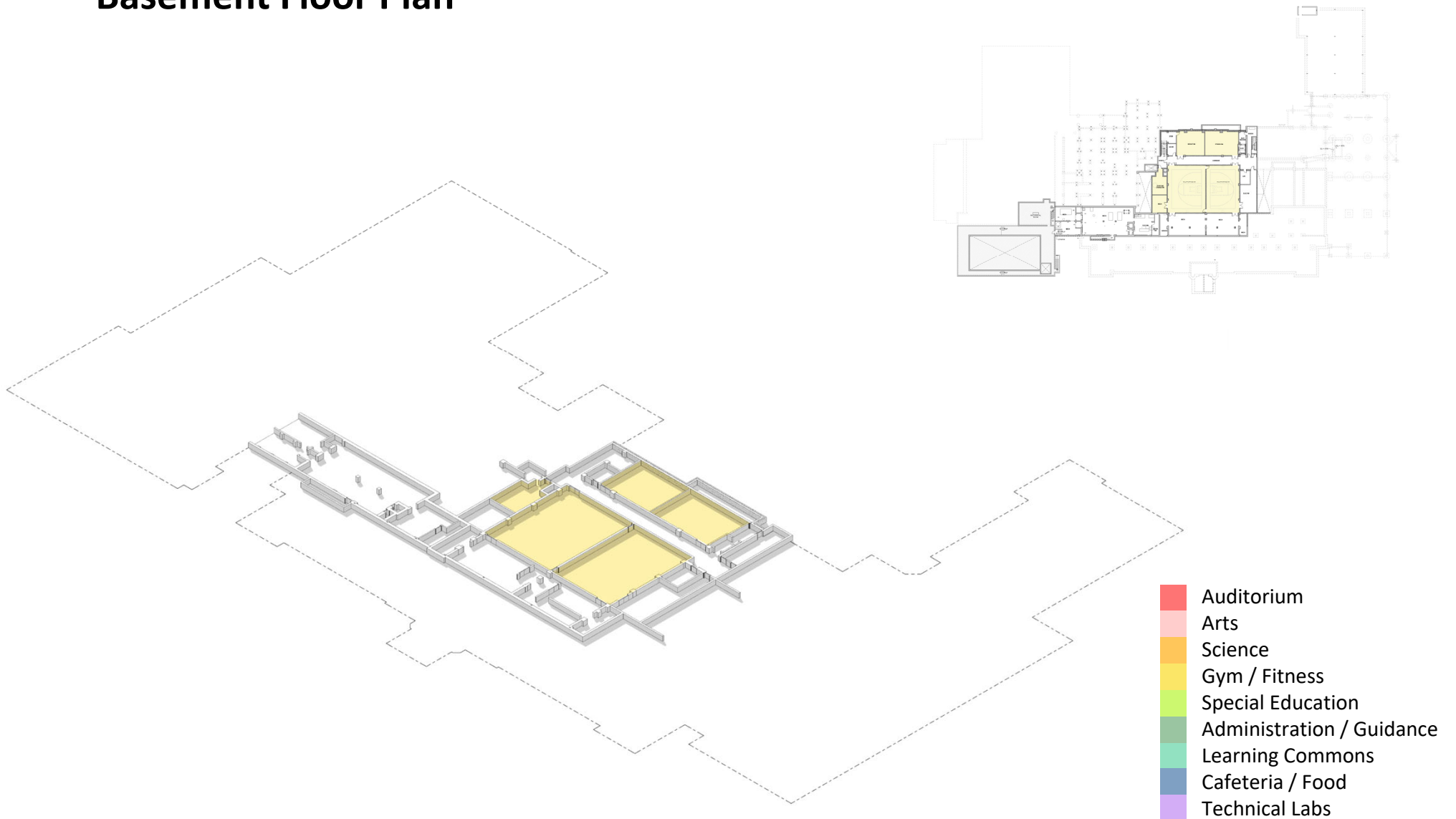
- Designed to accommodate the new York Memorial Collegiate Institute.
 - ✓ Combination of YMCI and GHCI and respective key programs in each institution (Arts and Technical Programming, etc.)
- Up to 1,300 pupil places are anticipated
- Total facility area 17,070 square meters (183,740 square feet).
- Combination of 3 and 4 storey structures.

Stacked plan YMCI

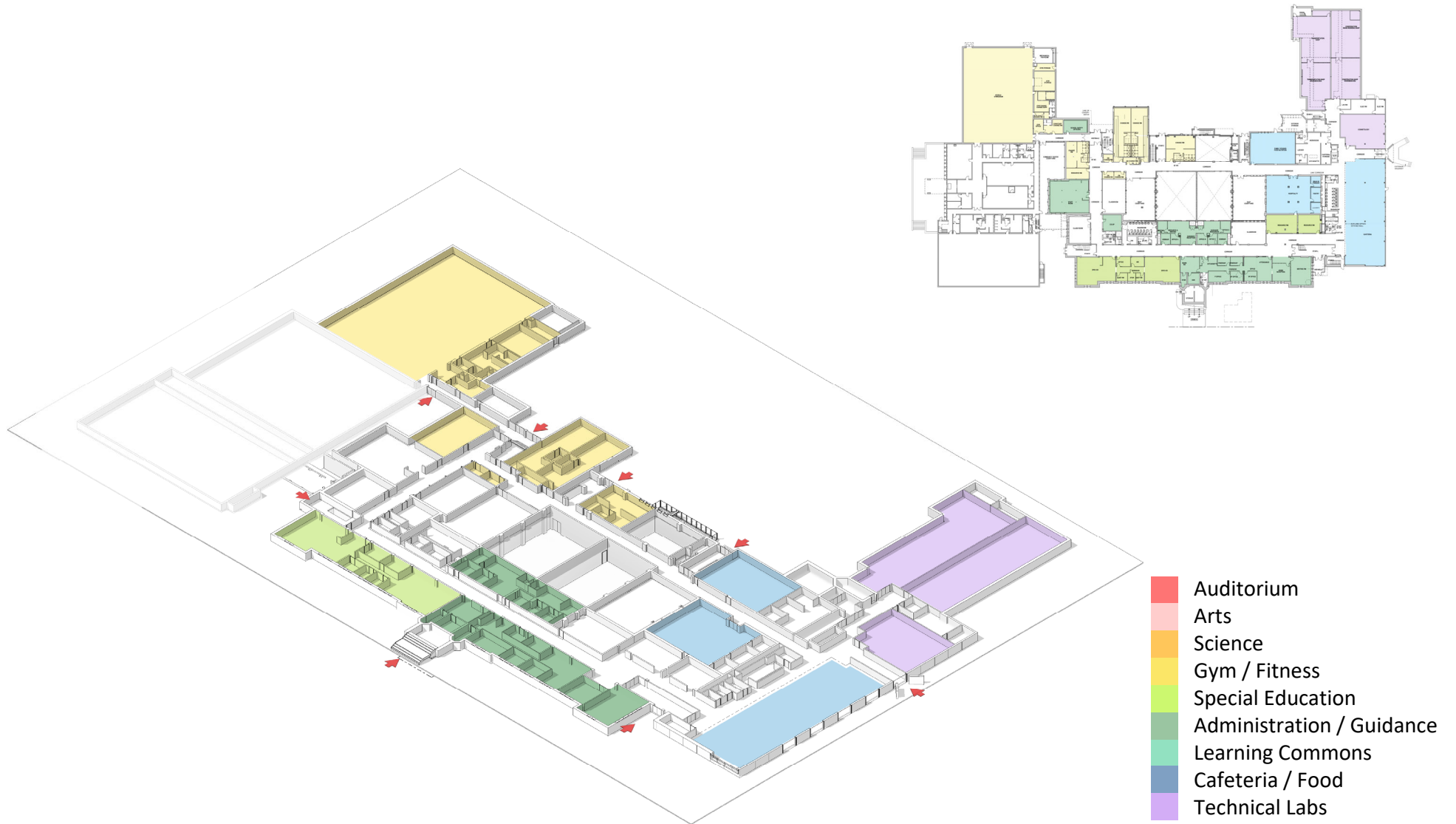


- Auditorium
- Arts
- Science
- Gym / Fitness
- Special Education
- Administration / Guidance
- Learning Commons
- Cafeteria / Food
- Technical Labs

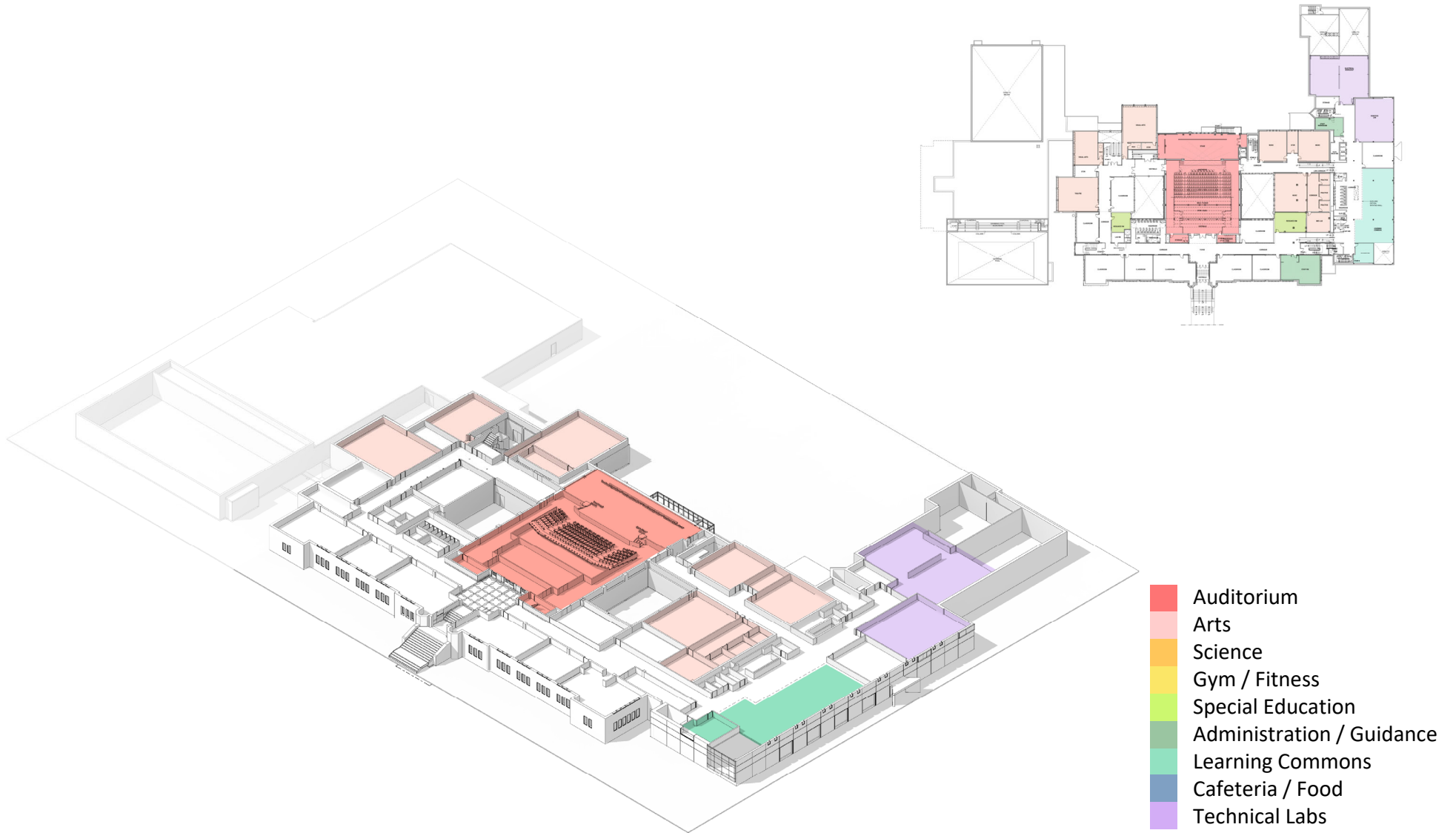
Basement Floor Plan



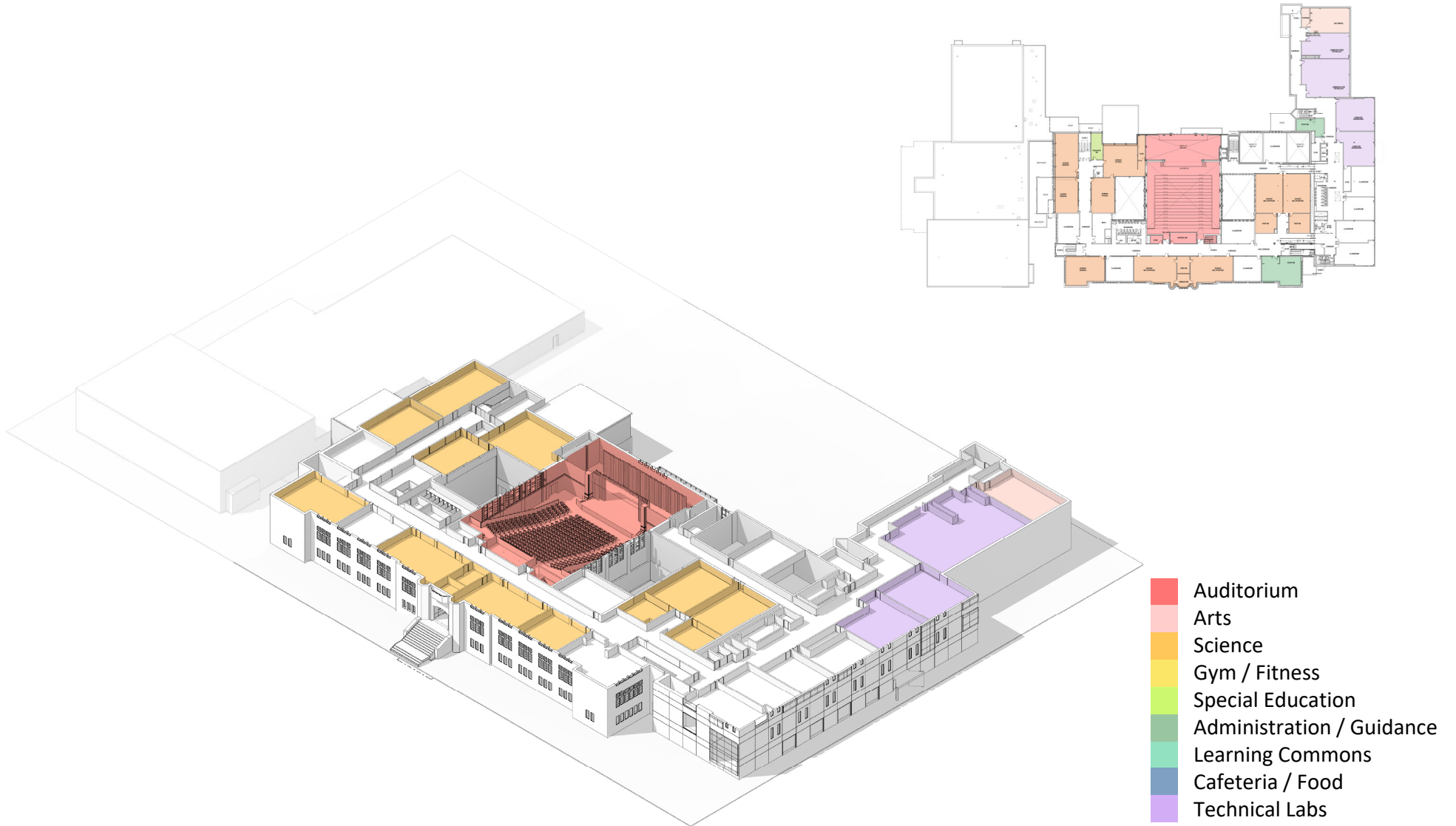
1st Floor Plan



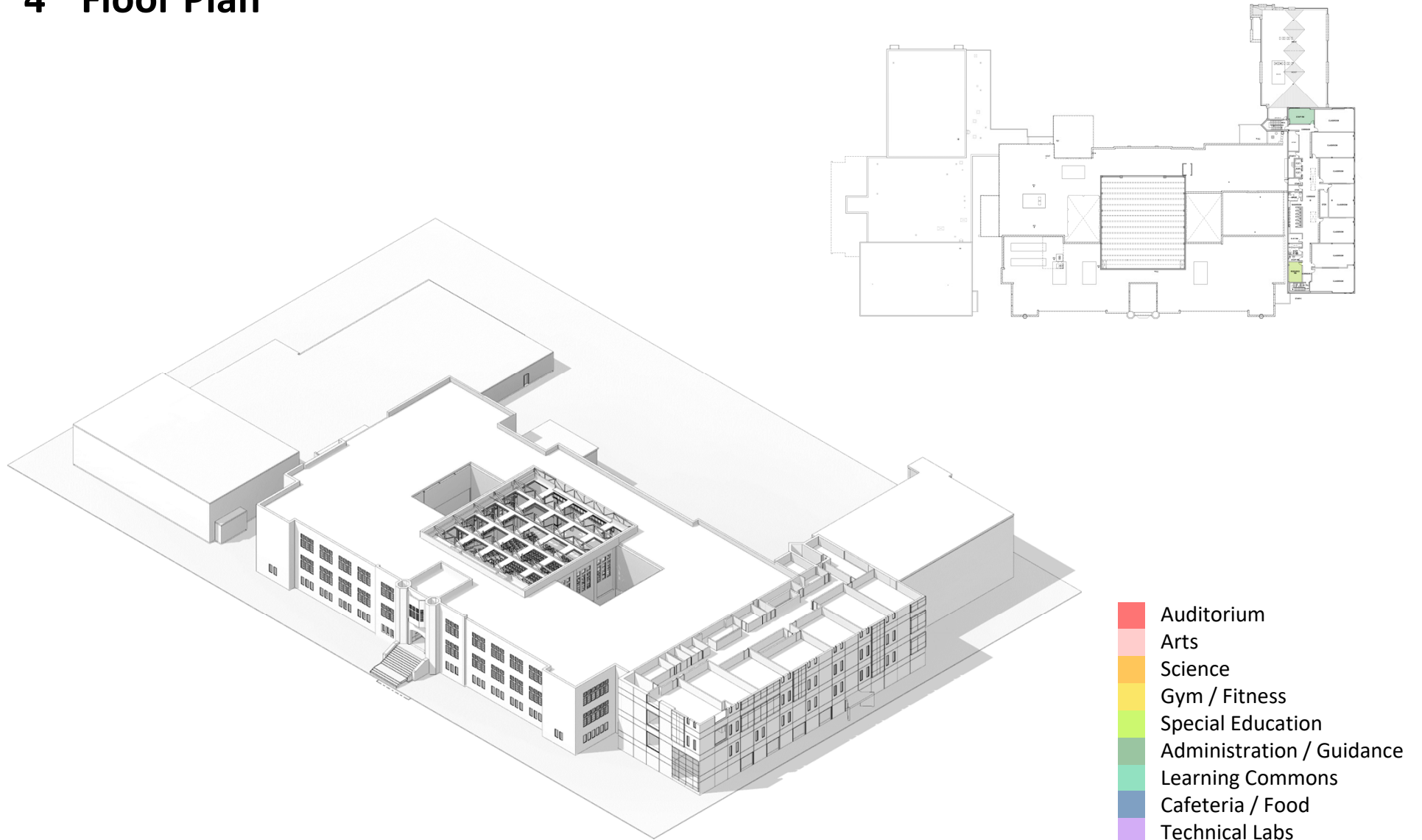
2nd Floor Plan



3rd Floor Plan



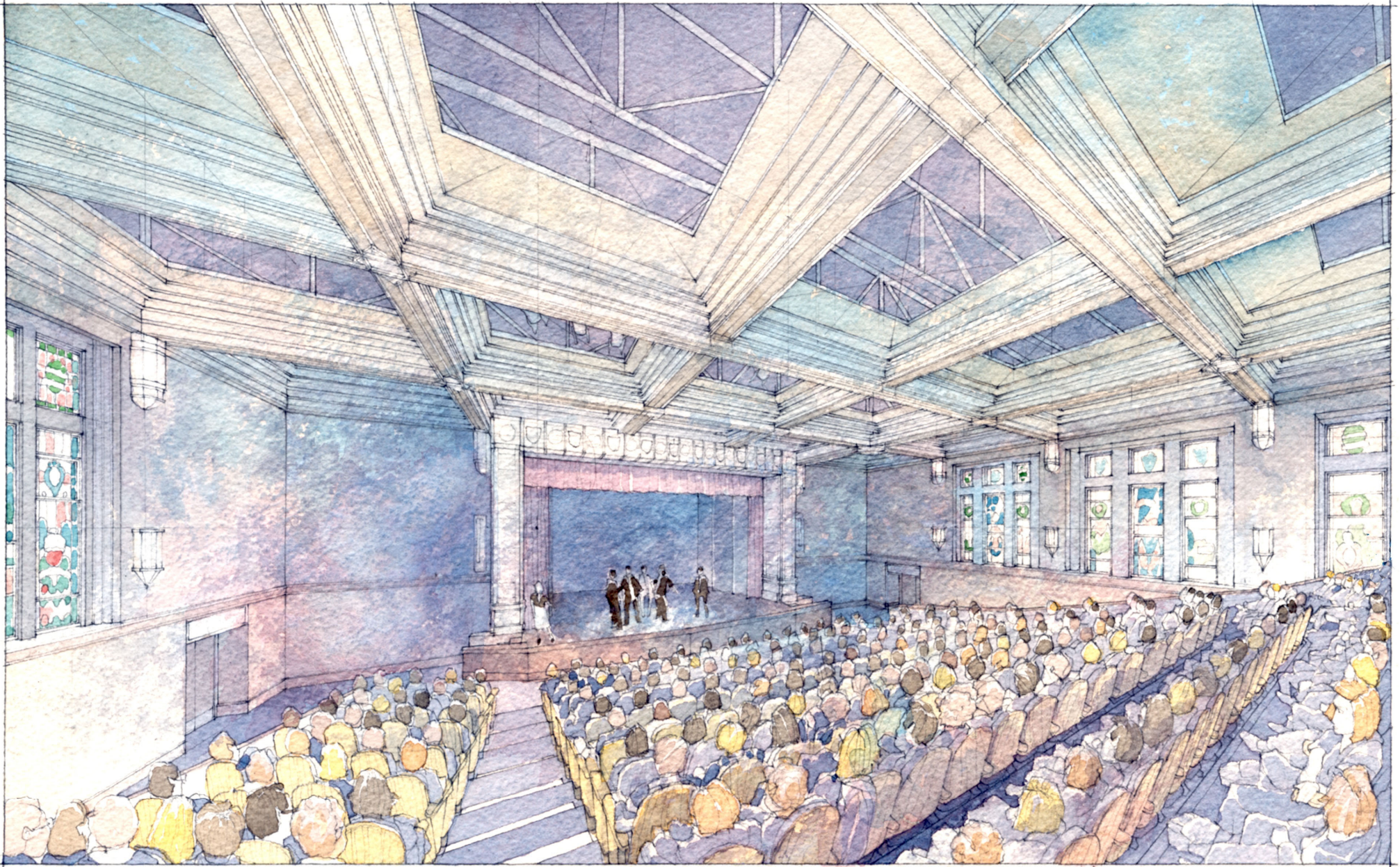
4th Floor Plan



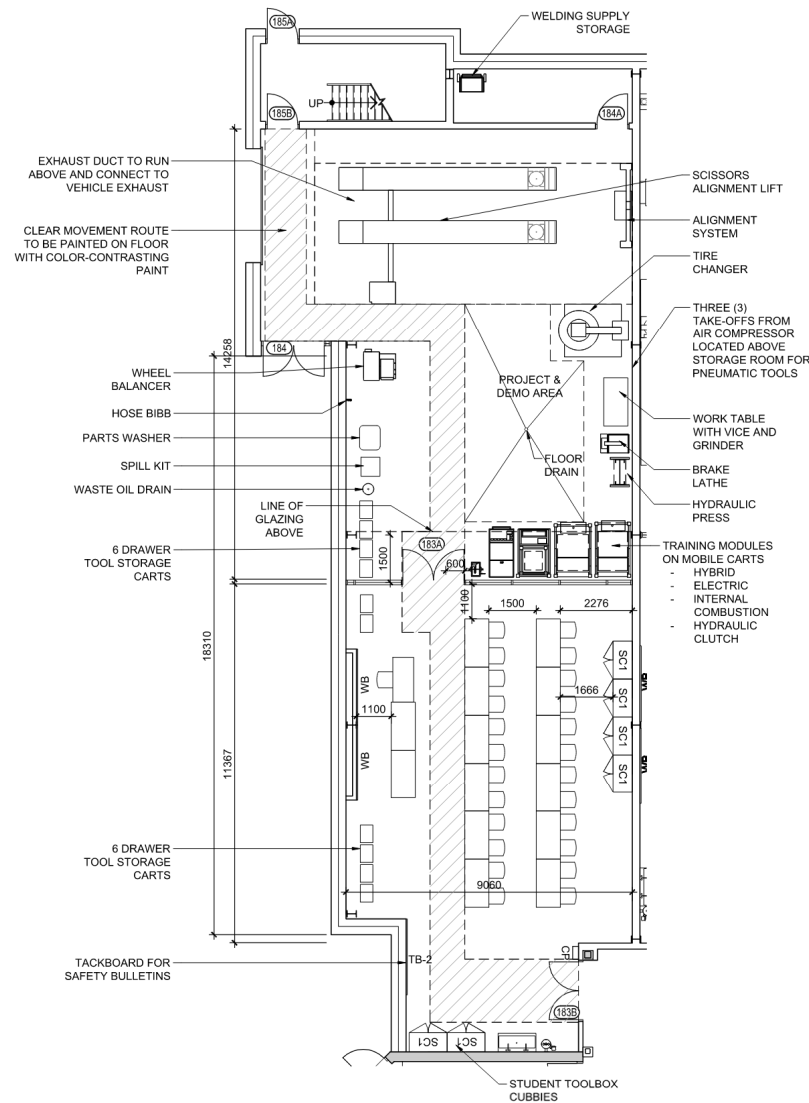
- Auditorium
- Arts
- Science
- Gym / Fitness
- Special Education
- Administration / Guidance
- Learning Commons
- Cafeteria / Food
- Technical Labs



Image of pre-fire
Auditorium at YMCI,
sourced from Twitter.

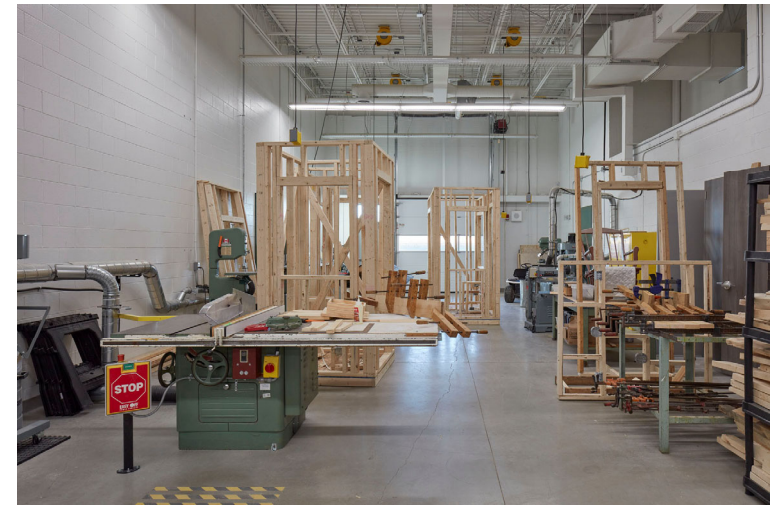
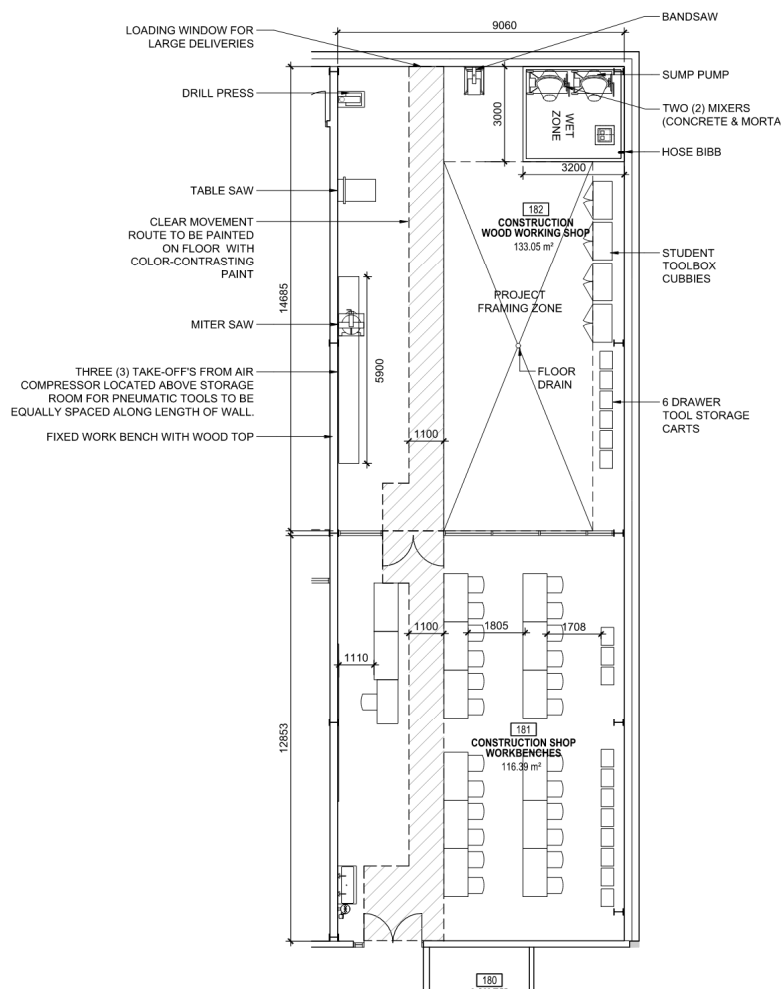


Transportation Workshop



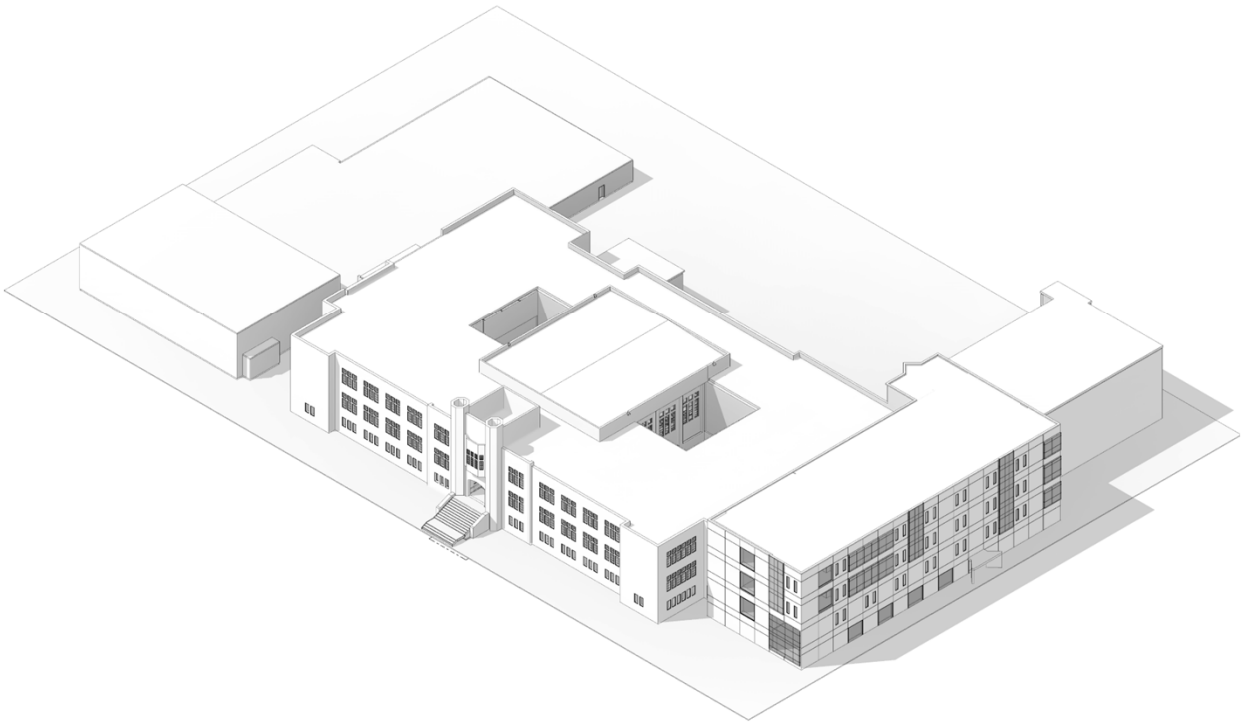
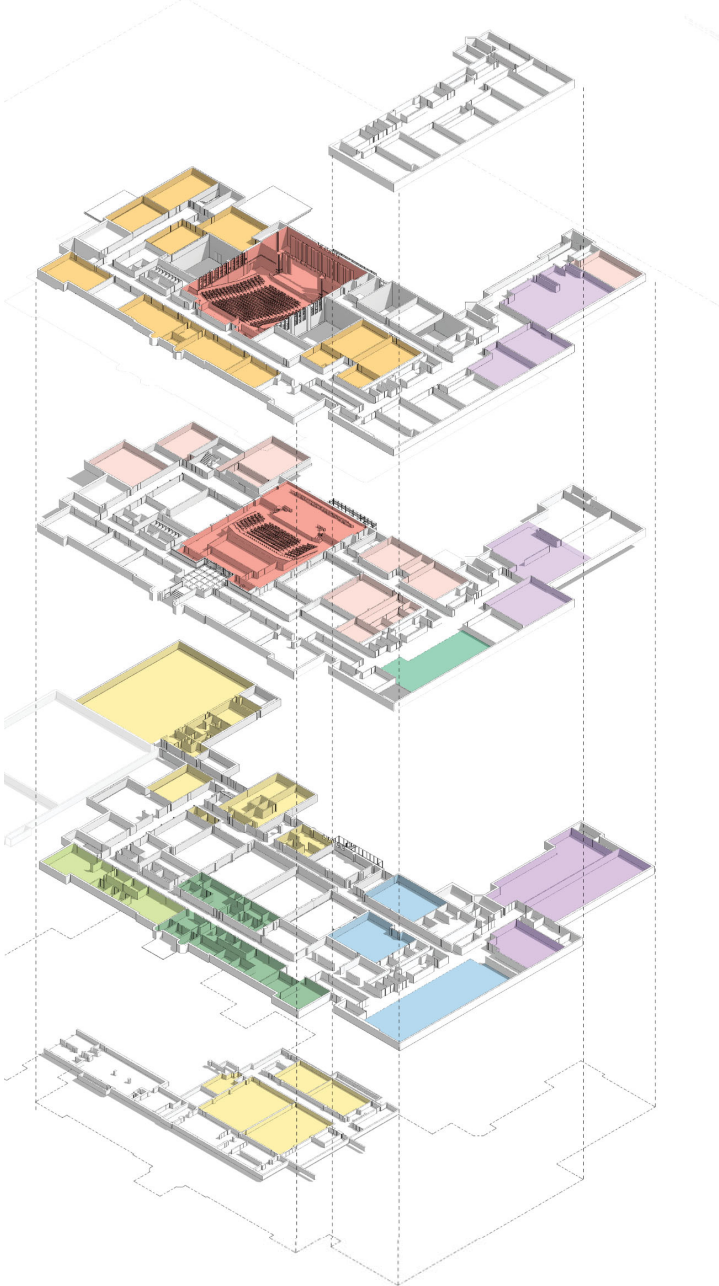
Shop visit to identify best practices for the new transportation workshop.

Construction Workshop



Example of a Construction Technology workshop.

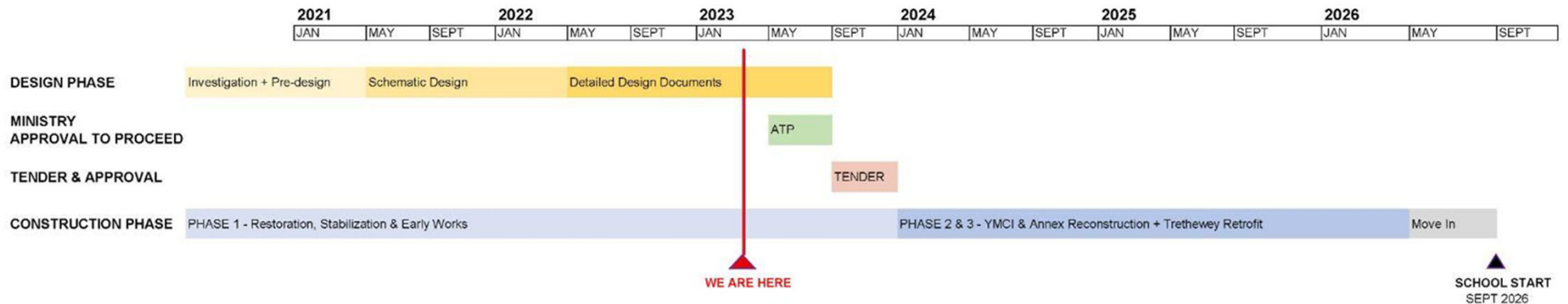
York Memorial Collegiate Institute – March 2023



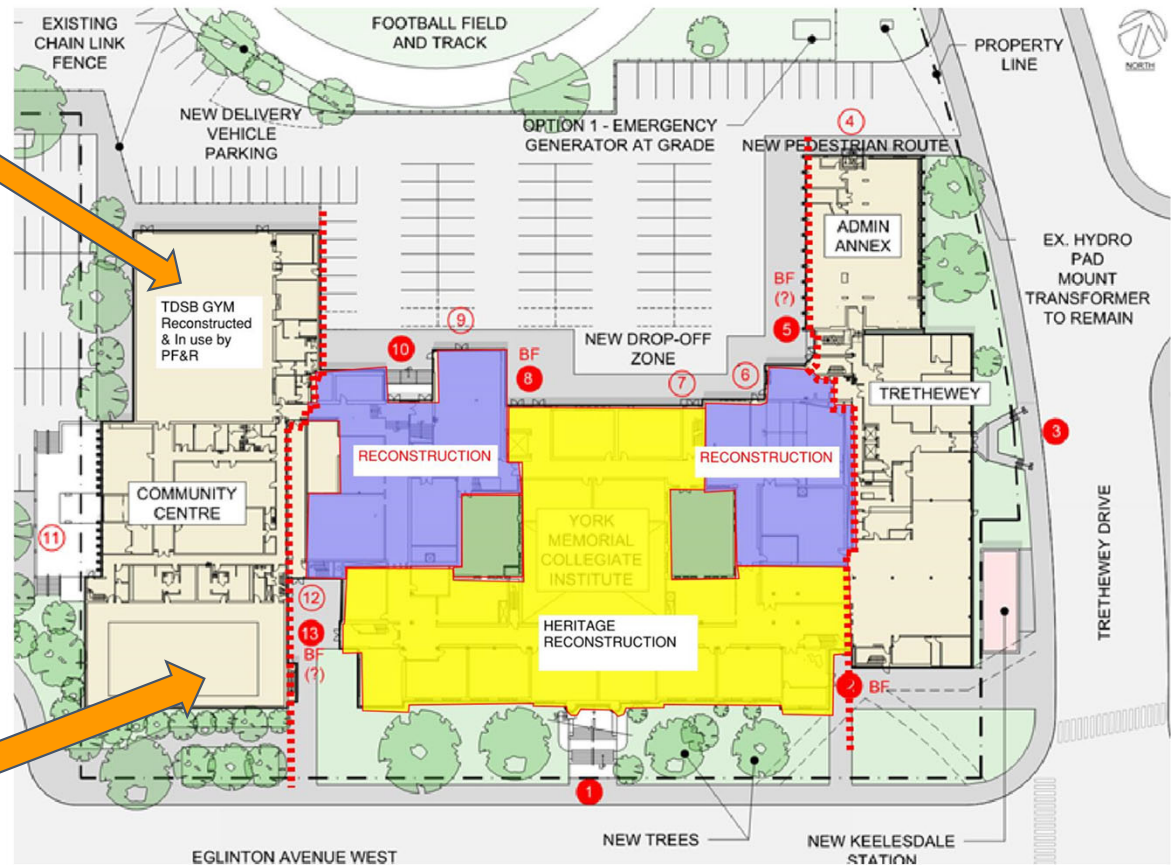
Project Update

Prithula Prosun, Capital Manager
Tom Schloessin, Design Coordinator

Project Timeline



Project Progress



CURRENT AREAS OF ACTIVITY -

- YELLOW BLOCK - HERITAGE RECONSTRUCTION & AUDITORIUM
- BLUE BLOCK - RECONSTRUCTION OF NON - HISTORICAL AREAS
- 2 TRETHEWEY + ANNEX - DESIGN OF NEW ACADEMIC AREAS

FINAL CONTEXT



Q&A

Thank you!

