



Program Area Review for Alternative Scarborough Education 1 (ASE 1), St. Andrews Public School, and Willow Park Junior Public School

To: Planning and Priorities Committee

Date: 23 June, 2021

Report No.: 06-21-4131

Strategic Directions

- Provide Equity of Access to Learning Opportunities for All Students
- Allocate Human and Financial Resources Strategically to Support Student Needs

Recommendation

It is recommended that Alternative Scarborough Education 1 (ASE 1) be relocated to Willow Park Junior Public School as of September 1, 2022.

Context

Rationale for the Review

The Long-Term Program and Accommodation Strategy (LTPAS) for 2020-2029, approved in November 2020, identified the need to explore the relocation of Alternative Scarborough Education 1 (ASE 1), a secondary alternative school, from St. Andrews PS due to emerging accommodation pressures at the site.

The enrolment pressures at St. Andrews PS continue to increase on a yearly basis. Current projections indicate two additional portables will need to be added to the existing four portables on site for a total of six portables this upcoming 2021-22 school year. Current enrolment of ASE 1 consists of 48 secondary students and is projected to remain stable. ASE 1 occupies five classrooms at St. Andrews PS. The relocation of ASE 1 would allow these classrooms to be used by St. Andrews students and help reduce the number of portables on site over the long term.

It was determined that a Program Area Review should be conducted to identify a suitable alternate school with space to accommodate ASE 1.

Preliminary Work of the Local Feasibility Team

A Local Feasibility Team (LFT) comprised of the area Trustees, Superintendents, Principals and Planning staff was formed to conduct the investigation. The Superintendent and Principal for ASE 1 identified that an elementary setting was necessary given the alternative nature of the program and provided the following requirements for relocation:

- Main office space
- Five classrooms
- Kitchenette (sink, fridge, counter space, and microwave)
- Separate entrance with buzzer
- Washrooms
- Good access to public transportation

The LFT reviewed several elementary school sites in Scarborough and determined that Willow Park Jr PS was in the appropriate location and had sufficient surplus space to accommodate ASE 1. Willow Park Jr PS is a single-track Junior Kindergarten to Grade 6 school. It is located just off of a major arterial road, Lawrence Avenue East, and has good access to public transit. The school currently operates at 60% utilization (335 students) and projections suggest that enrolment will remain stable for the next ten years. An addition for a childcare centre is currently proposed for Willow Park Jr PS. The date for the start of construction is yet to be determined. The relocation of ASE 1 would help increase the current utilization of classroom space at Willow Park Jr PS.

Work of the Program Area Review Team

The Program Area Review Team (PART) was established in May 2021 to continue the work of the LFT in evaluating the feasibility of the relocation of ASE 1 to Willow Park Jr PS. The PART consisted of the staff on the LFT as well as two parent representatives of the impacted schools and two ASE 1 students. The PART sought the advice and feedback of parent representatives and community members from the impacted schools through the course of three working meetings on May 11, 18 and June 1, 2021 and a public meeting held on May 25, 2021.

The PART reviewed the proposed space plan for Willow Park Jr PS showing the addition of ASE 1 on the second floor. The PART discussed the operations of ASE 1, the needs of the students, and the required renovations. After the second PART working meeting, a virtual public meeting was held which explored a detailed review of the proposed location in the building and examined all the questions about the introduction of ASE 1 to Willow Park Jr PS. The public meeting was attended by a total

of 18 members of the public. The community provided insight, asked questions about the relocation of ASE 1 to Willow Park Jr PS and responded to the survey made available at the public meeting and on the review webpage. All documents that were reviewed by the PART as well as the slides from the presentations to PART members can be viewed on the Program Area Review page of the TDSB's website (<https://www.tdsb.on.ca/About-Us/Strategy-Planning/Search-All-Reviews>)

The third PART working meeting reviewed the feedback from the survey and the additional questions submitted after the public meeting generally relating to ASE 1 operations and how the two schools would co-exist. The PART members reviewed the goal of alleviating accommodation pressures at St. Andrews PS, the sufficiency of Willow Park Jr PS facilities (classrooms, washrooms and parking) to accommodate ASE 1, and also engaged in considerable conversation about the interaction of secondary students and elementary students in the corridor on the second floor.

Commentary on the Recommended Changes

Staff and PART members both agreed that there was sufficient space at Willow Park Jr PS to accommodate ASE 1. After discussing the potential interaction of secondary and elementary students in the second floor corridor, the PART developed an additional recommendation that staff engage in a design and operational logistics exercise to determine if there are additional opportunities to further enhance separation of secondary and elementary students and mitigate to every extent possible potential unintended interaction in the corridor on the second floor. The proposal from the PART included the potential to look at alternate spaces on the first floor of Willow Park Jr PS that may offer better physical separation for ASE 1.

Staff, consisting of Planning and the Principals of ASE 1 and Willow Park Jr PS, attended a site visit at Willow Park Jr PS on June 3, 2021, to explore potential design and operational ideas to address the recommendation of the PART. A potential alternate design concept which would accommodate ASE 1's main office, space for lunch and washrooms on the first floor and classrooms on the second floor was developed. This design achieves fully self-contained space for ASE 1 at Willow Park Jr PS. This design is the preferred staff recommended option as it responds directly to the recommendation that the PART provided in the final working meeting and completely separates ASE 1 from Willow Park Jr PS and eliminates any potential interactions between secondary and elementary students.

Furthermore, in response to the PART's request to consider if there was an opportunity to create additional parking space, staff reviewed the parking lot at Willow Park Jr PS. The design of the parking lot cannot be modified to incorporate additional spaces. The 48 parking spots included in the current design provide sufficient parking on site.

Appendix A contains tables that show the schools' enrolments, facility capacities, and utilization rates for the recommended scenario.

Appendix B shows the preferred staff recommended floor plan of Willow Park Jr PS based on PART recommendations of relocating ASE 1 to Willow Park Jr PS.

Appendix C contains a map that shows the current and proposed ASE 1 locations relative to where the majority of ASE 1 students reside.

Appendix D contains the Final Report of the Program Area Review Team for St. Andrews PS, Alternative Scarborough Education 1 (ASE 1), and Willow Park Jr PS.

Action Plan and Associated Timeline

Subject to Board approval:

- The affected Superintendents and Principals will notify staff and students about the Board decision to provide one-year's notice of the relocation.
- Work will begin to relocate ASE 1 to Willow Park Jr PS for September 1, 2022.
- Construction is anticipated to be conducted over summer months to limit interference with regular school operation during the school year. Once completed, ASE 1 will occupy six classrooms and a resource space.

Resource Implications

The cost of the renovations at Willow Park Jr PS to accommodate ASE 1 is estimated to be \$500,000. It will be funded through the budget of the Central Accommodation Team.

The cost is offset by savings achieved by not adding additional portables at St. Andrews PS that would have been required over the next ten years.

Communications Considerations

Details about the outcome of the review will be posted on the TDSB's Accommodation Reviews website. Information and notice of the Board decision will also be provided through the school websites, the school profile pages on the TDSB website, backpack circulation, and will be emailed to all attendees at the public meeting who provided an email address.

Notation will be added to the street guide notifying anyone using 'Find Your School' search function of the Board-approved changes and directing them to the latest information about the outcome of this review.

Board Policy and Procedure Reference(s)

P068 Accommodation and Program Review

PR715 Program Area Review

Appendices

- Appendix A - Planning and Enrolment Data
- Appendix B – Staff Recommended Space Plan for ASE 1 and Willow Park Jr PS
- Appendix C – Map – Locations of St Andrews PS, Willow Park Jr PS and Secondary School Areas Where ASE 1 Students Reside
- Appendix D – Final Report of the Program Area Review Team for St. Andrews PS, Alternative Scarborough Education 1 (ASE 1), and Willow Park Jr PS

From

Maia Puccetti, Executive Officer, Facilities and Planning, at maia.puccetti@tdsb.on.ca or at 416-393-8780

Andrew Gowdy, System Planning Officer, Strategy and Planning, at andrew.gowdy@tdsb.on.ca or at 416-394-3917

Bill Wallace, Coordinator, Educational Planning, Strategy and Planning, at william.wallace@tdsb.on.ca or at 416-394-3944

Planning and Enrolment Data

Table 1: Status Quo

ASE 1 remains at St. Andrews PS

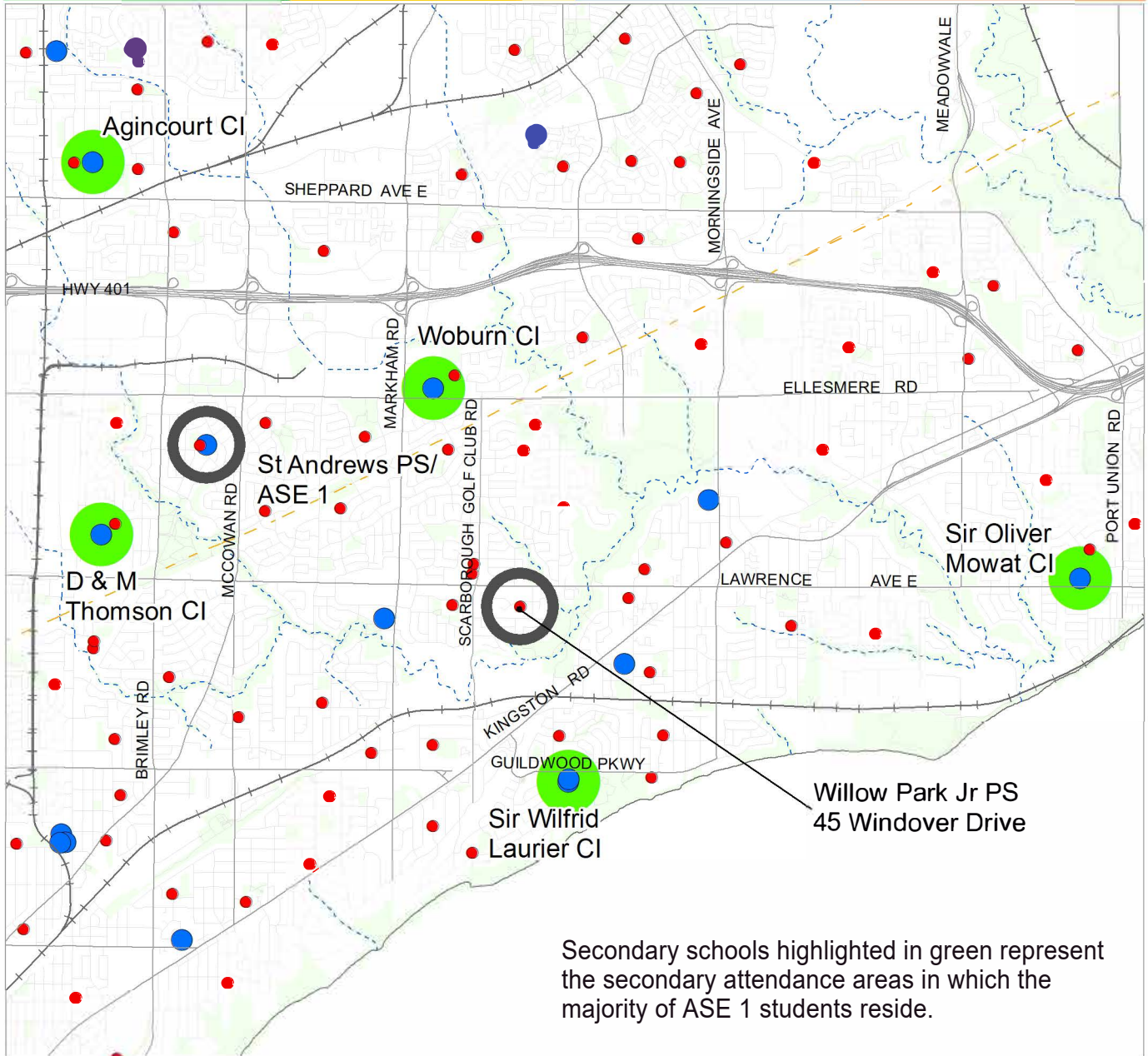
Facility	Capacity	October 31, 2020 Actual			October 31, 2025 Projection			October 31, 2030 Projection		
		Enrolment	Utilization	Portables	Enrolment	Utilization	Portables	Enrolment	Utilization	Portables
St. Andrews PS	384	468	122%	4	740	193%	10+	965	251%	20+
Alternative Scarborough Education 1 (ASE 1)	127	48	38%	0	46	36%	0	46	36%	0
Willow Park Jr PS	563	335	60%	0	349	62%	0	365	65%	0
total	1,074	851	79%	4	1,135	106%	14	1,376	128%	20+

Table 2: Staff Recommendation

Relocate ASE 1 to Willow Park Jr PS for the 2022-23

Facility	Capacity	October 31, 2020 Actual			October 31, 2025 Projection			October 31, 2030 Projection		
		Enrolment	Utilization	Portables	Enrolment	Utilization	Portables	Enrolment	Utilization	Portables
St. Andrews PS	511	468	92%	0	740	145%	9	965	189%	10+
Alternative Scarborough Education 1 (ASE 1)	127	48	38%	0	46	36%	0	46	36%	0
Willow Park Jr PS	436	335	77%	0	349	80%	0	365	84%	0
total	1,074	851	79%	0	1,135	106%	9	1,376	128%	0

Locations of St Andrews PS, Willow Park Jr PS and Secondary School Areas Where ASE 1 Students Reside



Secondary schools highlighted in green represent the secondary attendance areas in which the majority of ASE 1 students reside.

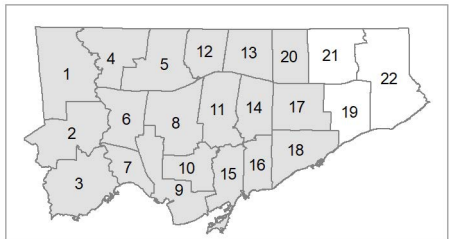
0 0.325 0.65 1.3 1.95 2.6 3.25 km

Produced by:
Strategy and Planning, TDSB
May 2021

Source:
Base Map- Geospatial Competency Centre
Facility - Strategy and Planning, TDSB
Data- City of Toronto

Legend:

- Elementary School
- Secondary School
- Ward Boundary
- Road
- +— Railway
- - - Utilityline
- - - Waterway



**Final Report of the Program Area Review Team for
St. Andrews PS, Alternative Scarborough Education 1 (ASE 1),
and Willow Park JR PS
June 9 2021**

RECOMMENDATIONS

The Program Area Review Team recommends:

1. That Alternative Scarborough Education 1 (ASE 1) relocate to the second floor of Willow Park JR PS for the 2022-2023 school year.
2. That staff engage in a design and operational logistics exercise to address any potential concerns related to the interaction of Secondary and Elementary students on the second floor of Willow Park JR PS.

BACKGROUND

The Long-Term Program and Accommodation Strategy (LTPAS) identifies the need to explore the relocation of Alternative Scarborough Education (ASE) 1 from St Andrews PS due to emerging accommodation pressures at the site. It was determined a Program Area Review would need to be explored to alleviate enrolment pressures by relocating ASE 1.

The enrolment pressures at St Andrews PS continue to rise on a yearly basis. Current projections indicate 2 additional portables will need to be added to the existing 4 portables on site for a total of 6 portables this upcoming 2021/2022 school year (Appendix A).

Current enrolment of ASE 1 consists of 48 students and is projected to remain stable. ASE 1 occupies 5 classrooms at St Andrews (Appendix A). The purpose of the program area review is to identify an alternate host school for ASE 1 with sufficient space to accommodate the program while alleviating accommodation pressures and eliminating the need for additional portables at St Andrews PS.

A Local Feasibility Team (LFT) comprised of the area Trustees, Superintendents, TDSB Principals and planning staff, was reconvened this spring 2021. The objective of the LFT was to investigate the potential for ASE 1 to relocate to Willow Park JR PS.

ASE 1 provided the following 6 requirements for relocation:

1. Office space
2. 5 classrooms
3. Kitchenette (sink, fridge, counter space, microwave)
4. Separate entrance
5. Local transportation (ease of access to TTC stops)
6. Washrooms

Willow Park Jr PS is a single-track junior kindergarten to grade 6 school. The school is currently operating at 60% utilization (335 students) and projections suggest that the school will remain stable within this utilization rate for the next 10 years (Appendix A). A daycare addition is currently proposed at Willow Park Jr PS. The date for the start of

construction is yet to be determined.

The addition of ASE 1 would help increase the utilization of classroom space at Willow Park Jr PS. The overall benefits of this partnership were analyzed and explored by the LFT. The LFT recommended to the Central Accommodation Team to move forward to a Program Area Review Team (PART) public process.

The objective of the PART is to continue the work of the LFT in evaluating the feasibility of the relocation of ASE 1 to Willow Park Jr PS and by further seeking advice and feedback from parent representatives and community members from the impacted schools through the course of three working meetings and a public meeting.

The PART meetings reviewed the proposed Willow Park Jr PS school floor plan with the addition of ASE 1 on the second floor (Appendix B). The PART reviewed renovations that would need to occur as well as asked questions related to the operations and character of ASE 1 and its students. After the second PART meeting a public meeting was held which explored a detailed review of the proposed location in the building as well as examined all of the questions relating to the introduction of ASE 1 to Willow Park Jr PS (Appendix C). The Public meeting was attended by a total of 18 members of the public. The community provided insight on and asked questions about the relocation of ASE 1 to Willow Park Jr PS as well as responding to the survey made available at the public meeting and on the review webpage (Appendix D).

The third PART meeting examined the feedback from the survey as well as reviewed additional questions submitted after the public meeting generally relating to ASE 1 operations and how Willow Park Jr PS would co-exist. The PART members reviewed the goal of alleviating accommodation pressures at St Andrews PS, the sufficiency of Willow Park facilities (classrooms, washrooms and parking) to accommodate ASE 1, and also engaged in considerable conversation about the interaction of secondary students and elementary students in the corridor on the second floor.

STAKEHOLDER ENGAGEMENT

Program Area Review Team		
School/Organization	Name	Role
ASE 1	Denis Lopes	Principal
ASE 1	Lynda Turner	Parent Representative
ASE 1	Jennifer Themelis	Parent Representative
ASE 1	Rachel Turner	Student Representative
ASE 1	Alex Themelis	Student Representative
St Andrews Public School	Kim Rainford	Principal
St Andrews Public School	Venkat	Parent Representative

	Shanmugasundaram	
St Andrews Public School	Katie Contreras	Parent Representative
Willow Park Junior Public School	Sheila Smalley	Principal
Willow Park Junior Public School	Sheyi Momoh	Parent Representative
Willow Park Junior Public School	Emtiaz Bala	Parent Representative
Ward 17, Scarborough Centre	David Smith	Trustee
Ward 19, Scarborough - Guildwood	Zakir Patel	Trustee
TDSB Superintendent	Peter Chang	System Superintendent
TDSB Superintendent	Kurt McIntosh	Superintendent, Learning Network 13
TDSB Superintendent	John Chasty	Superintendent
TDSB Superintendent	Harpreet Ghuman	Superintendent, Learning Network 15

Staff Resources		
Organization	Name	Role
TDSB	Manpreet Sian	Planning Department
TDSB	William Wallace	Planning Department
TDSB	Cindy Kim	Administrative Liaison

Meeting Details		
Meeting Type	Date	Time
PART meeting #1	May 11 2021	6pm-8pm
PART meeting #2	May 18 2021	6pm-8pm
Public meeting	May 25 2021	6pm-8pm
PART meeting #3	June 1 2021	6pm-8pm

ANALYSIS OF ALTERNATIVES

Status quo

St. Andrews PS is a Junior kindergarten to grade 8 regular track school currently operating at 122% utilization rate. The long-term projections suggest the utilization will increase up to 251% by the year 2030. The current optional attendance is closed so students from outside of the attendance area cannot apply to attend St Andrews PS. The enrolment pressures are proposed to be alleviated by relocating ASE 1 to another school with space and returning 5 classrooms for use by St Andrews. This would mitigate the need of portables on site as there are currently 4 portables on site with an additional 2 portables being added for the 2021-2022 school year.

ASE 1 is currently housed within St Andrews PS on the second floor. ASE 1 utilizes 5 full sized classrooms. The enrolment numbers of ASE 1 have declined recently. In 2017 ASE 1 had 120 students enrolled. The current 2020-21 school year has 48 students enrolled with the majority of students coming from various other Secondary schools within the

Scarborough area (Appendix E). The long-term projections suggest ASE 1 may remain stable throughout the next 10 years. ASE 1's criteria for relocating consists of: Office space, 5 classrooms, washrooms, a small kitchen, and good access to public transportation options.

Willow Park Jr PS is currently operating at 60% utilization and is projected to remain in the 60-65% range over the next 10 years. In 2017 Willow Park Jr PS was approved for a new childcare addition and the construction is expected to begin soon after the Ministry of Education approves to tender the project.

Option presented to PART members (ASE1 relocates from St Andrews PS to Willow Park Jr PS)

With the information available on each site the PART was presented with the recommendation to relocate ASE 1 to Willow Park Jr PS. Willow Park Jr PS was identified based on its geographic proximity to existing ASE 1 students and access to a public transit corridor (see Appendix D), as well as the availability of sufficient classroom space. The floor plan identifying proposed rooms to be occupied by ASE 1 were reviewed. The proposed relocation would assign classroom capacity from Willow Park PS to ASE 1 allowing the school facility to be more efficiently utilized. Further, the proposed relocation would assign classroom capacity of the 5 rooms currently occupied by ASE 1 back to St Andrews PS increasing its capacity and mitigating the need for any further portables into the foreseeable future.

SUMMARY OF FINDINGS

Throughout the process, the PART reviewed a significant amount of questions regarding the relocation of ASE 1 to Willow Park JR PS. Questions regarding ASE 1 focused on what exactly ASE 1 is, the type of students that attend ASE 1, how the school operates and the benefits it can provide. Questions regarding Willow Park JR PS focused on what would change with the addition of ASE 1; what rooms would be used how the students would interact, what type of support would be gained, and the renovations that would need to happen to accommodate both the daycare and ASE 1.

All questions were well thought out and appreciated. ASE 1 was described in more detail. The nature of the program, the admission process, what the student's study and the relationship they have the elementary school was explored. The benefits such as reading buddies and teacher's assistant were all highlighted through the question and answer phase of the PART meetings. Staff and parent representatives spoke openly about their experience with the current colocation of ASE 1 and St Andrews as positive and mutually beneficial.

Questions from Willow Park Jr PS staff and parents were also explored and answered during the PART meetings. Details about the time frame to complete the renovations, the classrooms that would be used by ASE 1, the use of washrooms and the overall function of ASE 1 within the Willow Park JR PS building were reviewed in detail.

All questions submitted through the PART process and the answers provided can be found in the PART meeting slide decks as well as the 'Question and Answer' document all posted to the review webpage.

The final PART meeting led to a thorough discussion around the placement of ASE 1 in Willow Park JR PS. PART members believed that there is a need to further investigate how Secondary and Elementary students may interact on the second floor of Willow Park Jr PS. It was suggested that additional separation needs to be considered between Willow Park Jr PS and ASE 1. Moreover, the number of parking spaces was also considered. A request to review the design of the parking lot to accommodate additional parking space was also requested.

In the final working meeting, the PART was unable to reach consensus on the recommendation *"That Alternative Scarborough Education 1 (ASE 1) relocate to the second floor of Willow Park JR PS for the 2022-2023 school year."* As such, a vote was taken with the outcome being 7 votes in favour of the recommendation and 1 vote opposed.

In light of the considerable conversation and acknowledgement by voting PART members of a need to further consider how secondary and elementary students can be kept separate, an additional recommendation was tabled *"That staff engage in a design and operational logistics exercise to address any potential concerns related to the interaction of Secondary and Elementary students on the second floor of Willow Park Jr PS."* On this recommendation consensus of the 8 voting PART members in attendance was reached. The next steps included the Principal of Willow Park JR PS, the Principal of ASE 1, Planning staff, and Design and Construction to visit Willow Park Jr PS to determine what changes can be made to address this recommendation.

Planning and Enrolment Data

Table 1: Status Quo
ASE 1 remains at St. Andrews PS

Facility	Capacity	October 31, 2020 Actual			October 31, 2025 Projection			October 31, 2030 Projection		
		Enrolment	Utilization	Portables	Enrolment	Utilization	Portables	Enrolment	Utilization	Portables
St. Andrews PS	384	468	122%	4	740	193%	10+	965	251%	20+
Alternative Scarborough Education 1 (ASE 1)	127	48	38%	0	46	36%	0	46	36%	0
Willow Park JR PS	563	335	60%	0	349	62%	0	365	65%	0
total	1,074	851	79%	4	1,135	106%	14	1,376	128%	20+

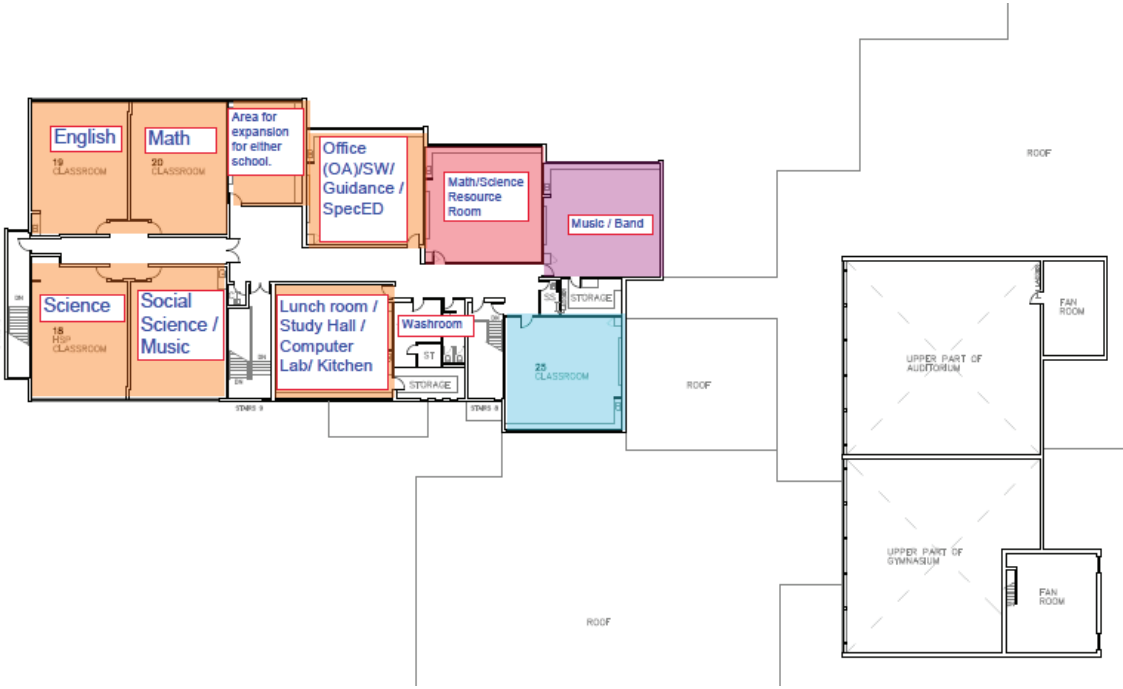
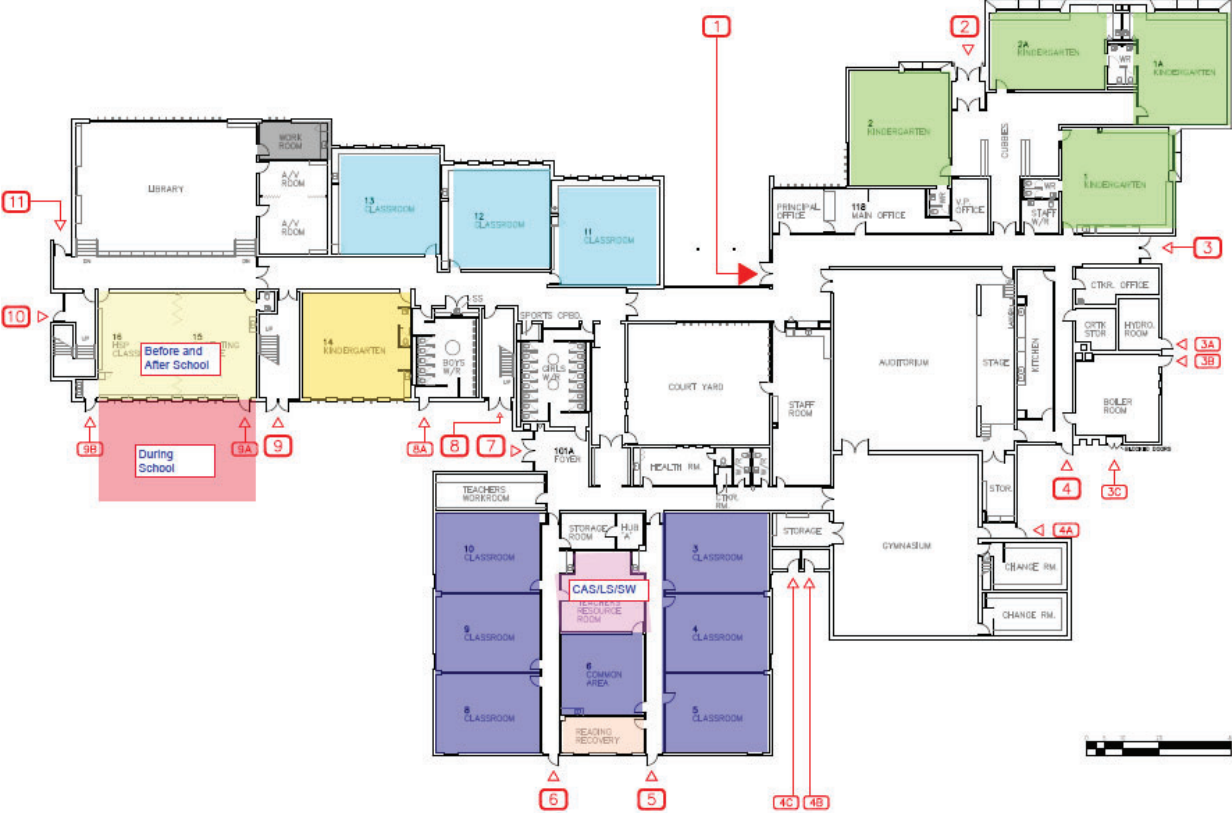
Table 2: Staff Recommendation
Relocate ASE 1 to Willow Park JR PS

It is recommended:

1. That Alternative Scarborough Education 1 (ASE 1) relocate to the second floor of Willow Park JR PS for the 2022-2023 school year.
2. That staff engage in a design and operational logistics exercise to address any potential concerns related to the interaction of Secondary and Elementary students on the second floor of Willow Park JR PS.

Facility	Capacity	October 31, 2020 Actual			October 31, 2025 Projection			October 31, 2030 Projection		
		Enrolment	Utilization	Portables	Enrolment	Utilization	Portables	Enrolment	Utilization	Portables
St. Andrews PS	511	468	92%	0	740	145%	9	965	189%	10+
Alternative Scarborough Education 1 (ASE 1)	127	48	38%	0	46	36%	0	46	36%	0
Willow Park JR PS	436	335	77%	0	349	80%	0	365	84%	0
total	1,074	851	79%	0	1,135	106%	9	1,376	128%	0

PART REPORT APPENDIX B





St. Andrews PS, Alternative Scarborough Education 1 (ASE 1) & Willow Park JR PS Program Area Review

Questions and Answers (as of May 18, 2021)

1. What is a Program Area Review?

A **Program Area Review** (PART) looks at the programs offered within a community or grouping of schools and identifies program gaps or space needs. It may involve looking at a range of options to increase access to programs including the establishment of new schools, introduction of new specialized programs or possible changes to grade configurations. To learn more about Program Area Reviews, please visit:

https://www.tdsb.on.ca/portals/default/ARC_helpful_info_docs/TDS130%20ParentGuardian%20Fact-revised-final-print%20version-Nov.%202020,%202017.pdf.

A PART is one of the strategies included in the Board's Long-Term Program and Accommodation Strategy (LTPAS), a document that was first created in 2014 and is reviewed annually. The strategy provides an approach to program and accommodation planning with a ten-year timeframe that allows for responsiveness and flexibility in a changing environment. It is a roadmap for the future that identifies future studies that could lead to Accommodation Reviews.

To learn more about the Long Term Program and Accommodation Strategy, please visit: <https://www.tdsb.on.ca/About-Us/Strategy-Planning/Long-Term-Program-and-Accommodation-Strategy>

Questions regarding ASE 1

2. What is ASE 1?

Alternative Scarborough Education 1 (ASE 1) is an Alternative school operated by the Toronto District School Board. Alternative schools offer smaller school environments and are ideal for students seeking an alternative to mainstream education.

The schools use non-traditional, hands-on approaches to learning the required Ontario Ministry of Education Curriculum. Each school has a distinct identity and focus.

Alternative schools are open and free to any resident of Toronto. Space is limited and students can apply to attend on [optional attendance](#). The application process is different for each alternative school.

3. What is the focus of ASE 1?

Alternative Scarborough Education 1 (ASE 1) offers Grades 11 and 12 programs emphasizing independent study, computers and technology in the classroom integrated with its Moodle online experience, flexible timetables and a collegial learning atmosphere similar to post-secondary studies. Most students go on to post-secondary studies.

More details can be found online:

[ASE1 Brochure](#)

[ASE1 TDSB webpage](#)

[ASE 1 School webpage](#)

4. How old are ASE 1 students?

ASE 1 students are 17 to 19 years of age (Grade 11 and 12 students).

5. Will ASE 1 students be taking a bus/car/transit?

ASE 1 students use different methods to get to school including taking public transit, walking, and being dropped off by a family member. There is no onsite parking for students.

6. What is the ASE 1 student-teacher ratio?

The average ratio is 18 students to 1 teacher.

7. Are ASE 1 students currently studying virtually or are they in class?

Currently, due to COVID-19, students are studying virtually with TDSB Virtual School. In normal circumstances, the school is operated in-person with the option of taking some classes online.

8. How do Secondary Students interact with Elementary Students?

Secondary students interact with elementary students under supervision in many ways:

- Classroom volunteers for required Secondary School Community Service hours (Co-op classroom placements)
- Community service projects (Earth Day, community clean-up)
- Collaboration to support elementary students with special circumstances (assistance with snack program donations)
- Shared social work services
- Participation in school safety drills (e.g. fire drills, lockdown drills)
- Kindergarten assistants

- Reading Buddies program
- Assistant coaches – baseball, basketball, soccer
- Sports equipment assistant – prepare, organize, clean equipment and jerseys; lined sports field when required
- Assistance with set-up and running of Fun Day
- Teacher’s assistant – e.g. photocopying, preparing art materials

9. In the past, have there been issues with ASE 1 students sharing a site with another school?

The students interact with each other and teachers in a positive, responsible, and respectful manner. The students never hesitate to lend a helping hand when needed.

10. Will the secondary students share washrooms with the elementary students?

We anticipate the current washroom upstairs will need to be converted to boys’ and girls’ washrooms to be used by ASE 1 secondary students. The elementary students will utilize the washrooms on the main floor.

11. Do ASE 1 students go out for lunch breaks or recess?

ASE 1 students have a lunch break only (no recess). Like all secondary students, if they have an unassigned period, students have the option to work independently in a designated work area or can leave the school.

Questions regarding Willow Park JR PS

12. How will Willow Park Junior PS rooms be used when ASE 1 moves in? Will there be any spare rooms?

There will be spare rooms. Currently Willow Park Jr. PS has 25 full-sized classrooms. The school uses 18 classrooms. ASE 1 will use 5 classrooms. The remaining rooms will be used if needed but can easily be used as core classrooms if the space is required.

13. Will there be extra support for the administration of Willow Park Junior PS or will ASE 1 operate separately?

ASE 1 will operate separately. Principal Denis Lopes will oversee all ASE 1 program and staff needs. There is also a curriculum leader always on site at ASE 1 who is the direct day to day liaison with the Willow Park JPs Principal. Willow Park JPS currently has a Principal and Vice Principal assigned to their school for the fall of 2021-22. Based on past experience with secondary alternative schools in elementary sites, this provides the necessary administrative support for both schools.

14. Have you accounted for out-of-boundary students who use the childcare and attend Willow Park Junior PS?

The current optional attendance policy does allow for students enrolled in school-based licensed child care centres to have the option of attending the school in which the child care is located where there is no access to, or available space in licensed child cares feeding into their local school.

The projected enrolment at Willow Park Jr. PS does factor in some growth. Currently at Willow Park, classrooms are not full and more students could be accommodated into the existing classrooms. For example, the 4 Kindergarten classrooms could accommodate up to 116 Junior and Senior Kindergarten students and current enrolment projections anticipate about 100 students.

15. How will dismissal time work? Will the elementary students have to walk through crowds of high school students?

The dismissal time for ASE 1 students will be earlier. Moreover, ASE 1 students will enter and exit through their own designated door (Door 10 on the Willow Park Junior PS floor plan). Elementary students will not have to walk past any secondary school students to exit the building.

16. How will fire drills work?

Fire drills will work the same as always. Safety is key. All students will use the nearest exits to leave the building. Practice drills will be held together so everyone knows what to do in the event of an emergency.

17. When will ASE 1 be moving into Willow Park Jr. PS?

The proposal is September 2022.

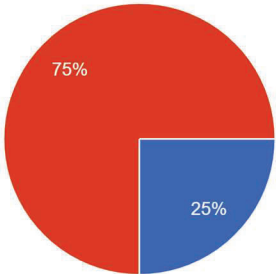
18. When will the renovations be done?

The renovations to accommodate the needs of ASE 1 are anticipated to be planned to occur during the summer months to limit potential disruption to students during the school year.

Public Meeting Survey Results

Which school community do you belong to?

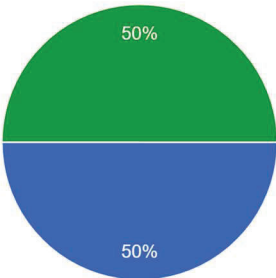
4 responses



- St. Andrews PS
- Alternative Scarborough Education 1 (ASE 1)
- Willow Park Jr PS

Please describe your connection to this school:

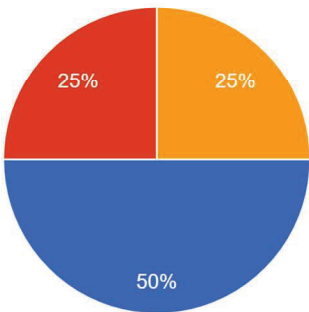
4 responses



- Parent/Guardian
- Student
- Community Member
- TDSB Staff

Do you support the proposal to relocate ASE 1 to the second floor of Willow Park Jr PS?

4 responses



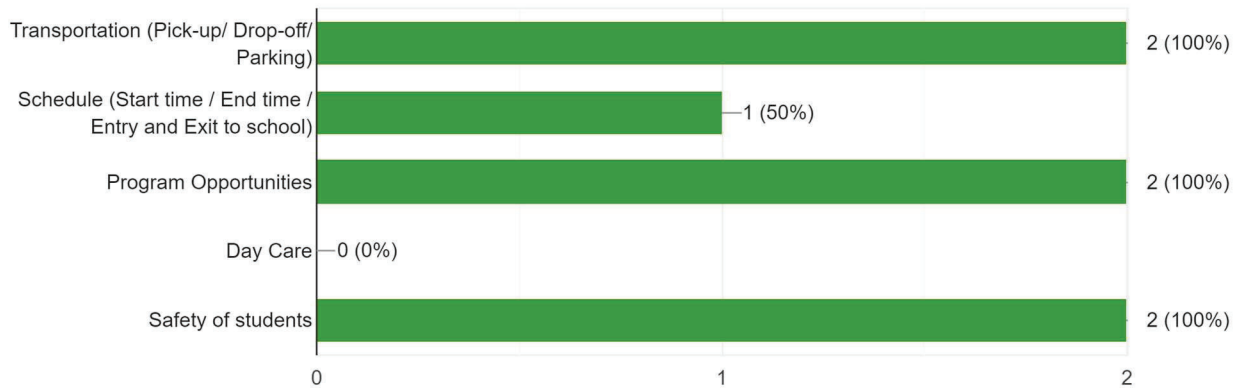
- Yes
- No
- Undecided

Please tell us why you agree, disagree or are undecided with the proposal to relocate ASE 1 to the second floor of Willow Park Jr PS? 2 responses

After listening to the questions, I am now concerned about the safety of high school students walking from the bus stop to Willow Park at different times when there may not be a lot of families around.

New location for ASE seems acceptable in terms of location, sufficient space, etc. St. Andrews is growing, it would be good to have some stability for ASE knowing that they have a long-term home.

There are a number of considerations that the PART has discussed and have also been asked about. We would like to know if these are also impo...to Willow Park Jr PS? (Please check all that apply)
2 responses

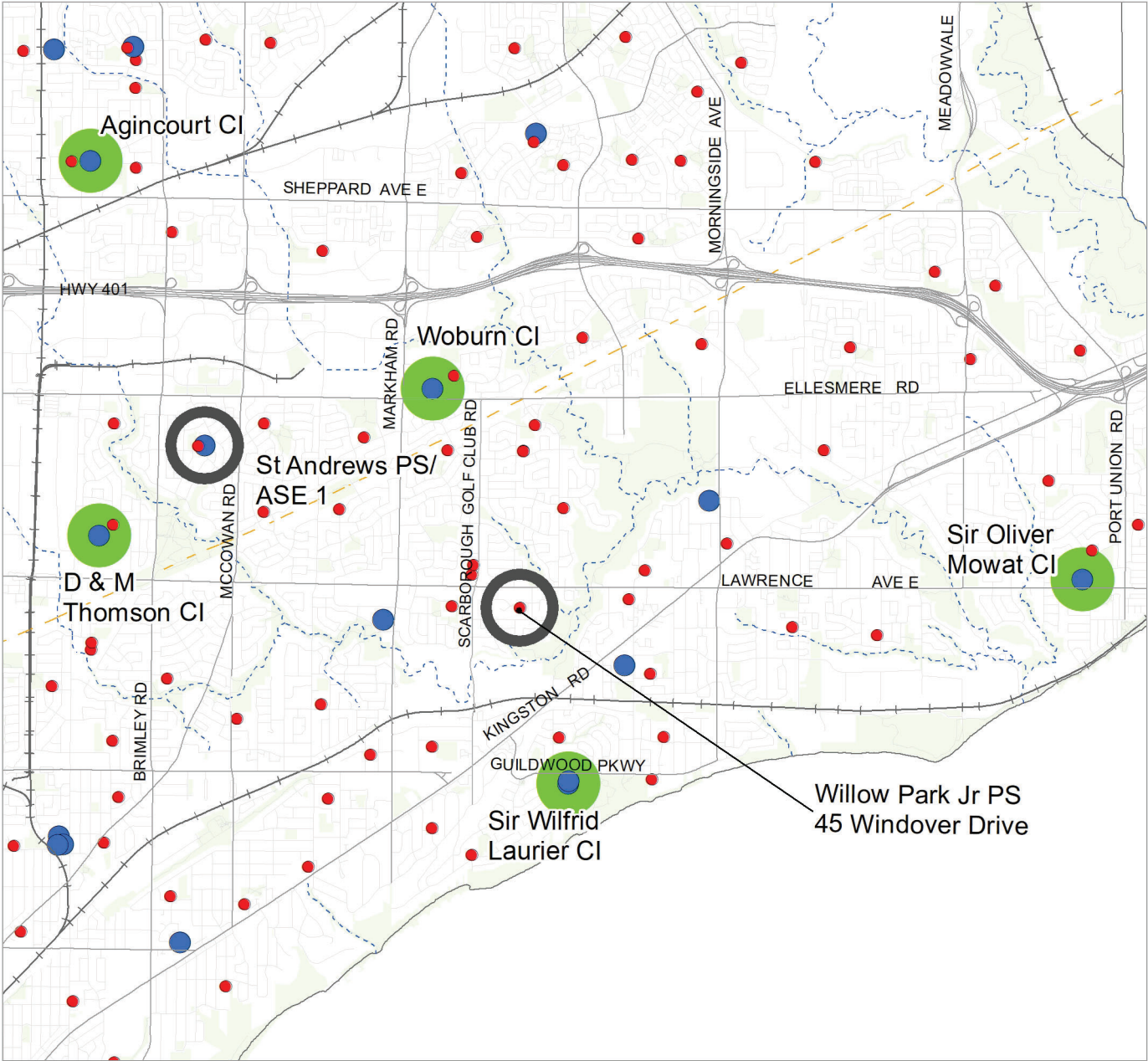


Do you have any other suggestions, comments, and/or questions that you would like the TDSB to consider? 2 responses

Promote ASE 1 properly so that students who are struggling with regular secondary school know that they have a fantastic option to support them!

Please ensure that ASE has comparable technology in the new location - specifically smartboards.

Where the Majority of ASE 1 Students Home Secondary Schools Are Located



0 0.325 0.65 1.3 1.95 2.6 3.25 km

Produced by:
Strategy and Planning, TDSB
May 2021
Source:
Base Map- Geospatial Competency Centre
Facility - Strategy and Planning, TDSB
Data- City of Toronto

- Legend:
- Elementary School
 - Secondary School
 - Ward Boundary
 - Road
 - +— Railway
 - - - Utilityline
 - - - Waterway

