



TDSB Psychological Services, Backlog Wait Lists, 2020-2021: Update

To: Program and School Services Committee

Date: 5 May, 2021

Report No.: 05-21-4086

Strategic Directions

- Transform Student Learning
- Provide Equity of Access to Learning Opportunities for All Students
- Create a culture student and staff well-being

Recommendation

It is recommended that the report on the Psychological Services backlog of wait list be received.

Context

The goal of all psychological staff is to complete assessments quickly and effectively to support students' well-being and learning. Psychology staff deliver a variety of services to students and staff. The majority of their time is devoted to understanding students' strengths and needs through consultations and assessments. The purpose of this report is to provide information regarding TDSB Psychological Services' back log of psychological referrals wait lists.

A wait list is defined as the total number of students waiting for assessment at any given time. It does not describe the length of time needed to complete an assessment. Historically, caseload information has been collected directly from psychological services staff on a monthly basis to enable the monitoring of assessment referrals and ensure accountability for work completion. This report is based on the best effort to reconcile the data from these monthly statistics, across the four Learning Centres.

Assessment referrals are continuously generated through monthly School Support Team (SST) meetings held throughout the academic year; meetings are attended by Principals, Teachers, parents/guardians and a variety of members of Professional Support Services Staff (including Psychologists, Social Workers, and Speech & Language Pathologists).

Wait List and Caseload Data

Depending on the circumstances, students may be seen promptly or placed on a wait list. It is noted that wait list figures do not reflect how long a student has waited for an assessment (i.e., it does not distinguish whether a student was referred on the first or last day of school). The new online database will provide information about response times which will support the identification of strategies to improve the delivery of assessments.

The following are some considerations a psychological referral would stay on the wait list:

- School staff or parent/guardian request that the assessment be delayed.
- The student has made progress and the referral is no longer a priority.
- The school prioritizes new, urgent referrals.
- Parents/Guardians are reluctant to give consent for the assessment.
- Other reasons (e.g., illness, family crisis, out of country, etc.)

Appendices A, B and C chart the wait list data for school years of 2018-2019, 2019-2020 and for the current school year from September 2020-April 2021.

- Appendix A presents the cumulative information as of June 2019 and the second table updates this data to August 2019. The second table includes the summer assessments completed through the additional funding from the Ministry of Education. The first table indicates that in the 2018-2019 academic year, 77.4% of all assessment referrals were resolved by the end of June (67.1% completed and 10.3% removed). The second table, end of August 2019, psychology staff resolved 79.3% of all referrals (68.9% completed and 10.4% removed); 19.6% remained on the wait list.
- Appendix B presents the cumulative information as of June 2020 and the second table updates this data to August 2020. The second table includes the summer assessments completed through additional funding from the Ministry of Education. The 2019-2020 school year was interrupted by the school lockdown in March 2020 as a result of the pandemic. The data reflects the impact the school lockdown from March to June 2020 had on the completion of psychological assessments. The data indicates, regardless of the school lockdown, 74.8% of all referrals were resolved (62.7% completed and 12.1% removed) and 25.5% remained on the wait list.
 - The wait list was 5% more than the previous year which is a direct result of the school lockdown from March 2020 to June 2020.
 - Re-aligning confidentiality and consent in a virtual platform took additional training and information gathering during the sudden school lockdown in March 2020.
 - Some psychological assessments cannot be completed virtually as a result of varying abilities of the child; consistent use of the technology; technological equity and barriers to assessments such as observation of

body language, non-verbal cues that cannot be accurately assessed virtually.

- Appendix C details the statistical data regarding psychological assessments for the current academic year, up to the end of April 2021. 69% of current referrals (Regular and Gifted) were completed, removed, or were in progress as of end of April, 2021. This decrease in assessments is related to challenges experienced as a result of the pandemic and include:
 - Late start to the 2020-2021 school year in September 2020.
 - School closures from January 4, 2021 to February 16, 2021 and the current school closure order as of April 8, 2021.
 - Staff being unable to safely assess students with high needs who could not wear face masks.
 - Remote assessment methods were not possible for students who required tactile testing materials or students who did not have access to the necessary technology.
 - Some families have chosen to wait until their child can be assessed safely at school.
 - Challenges in trying to complete assessments when student cohorts were quarantined or students were absent from school.

Aligned with TDSB's Multi-year Strategic Plan with the continued focus on anti-oppressive practices psychological staff have provided a variety of supports to meet the learning needs of students, families and staff members during the school closures such as:

- Professional development for staff and parents on learning strategies;
- Academic guidance and interventions for students- both in person and in virtual classrooms and the provision of relevant resources.
- Psychological Services staff have worked collaboratively with Special Education staff by participating on IPRC committees
- Have engaged in initiatives with Special Education staff and PSS staff to support new and inclusive models that provide learning strategies for all students.

There are a number of factors which have contributed to the wait lists. They are as follows:

- Prioritization of new referrals over older referrals based on students' needs.
- Rate of new referrals received in each school.
- Variability of time taken to complete a referral. While some assessments can be completed relatively quickly, others are complex and require more time.
- Referrals received in May and June are likely to be carried over to the next school year. There were 1589 referrals carried over to the 2020-2021 school year.
- Requests to complete assessments without compelling evidence rather than seeking alternative solutions or interventions.
- Gaps in staffing due to short-term absences and inability to replace staff quickly and effectively.
- Parents/Guardians are reluctant to give consent for the assessment.
- Other reasons (e.g., illness, change of schools, out of country, etc.).

Action Plan and Associated Timeline

What is being done to reduce wait lists?

Despite staffing reductions, several strategies are being considered in order to ensure timely service and address the backlog:

- Consideration of targeted or brief assessments, when appropriate.
- Consideration for per diem psychological staff that only do Gifted Assessments next year allowing the rest of the staff to concentrate on regular assessments and waitlists.
- Use staff consultation and intervention skills to address referral concerns without an assessment (APA, NASP, CPA recommendation).
- Hiring practices— consider timelier and not after school year begins to post jobs; have more permanent postings.
- Discussion with Special Education about assessment deadlines for DK and gifted.
- Emphasis on prevention; evidence-based practice in early years to screen, support and intervene potentially preventing an assessment in the future reducing wait lists.
- Board considerations for on-call short term supply psychologists to replace leaves.
- Starting in September 2020, a new referral and database system for all Professional Support Services was implemented. This new system allows for the tracking of time intervals between when referrals are received and when service begins; provides information about actual wait times for service, and offers detailed data on the completion time of referrals. We continue to work with our IT department to finalize these tracking priorities.
- Continue to implement the Action Plans in the TDSB MYSP for Inclusion. Ensure all staff understand the goals in the plan and have the skills required to meet students' needs.
- Review School Support Teams (SST) and In-School Support Teams (IST) processes to ensure they are utilizing consultative supports from psychological services prior to referrals to assessments.

Board Policy and Procedure Reference(s)

Not applicable

Appendices

- Appendix A: Assessment Statistics from September 2018 to Late August 2019
- Appendix B: Assessment Statistics from September 2019 to Late August 2019
- Appendix C: Assessment Statistics from September 2020 to April 2021 Per Learning Centre
- Appendix D: Wait List Referrals & Time Per Learning Centre
- Appendix E: Pie Graphs of Wait List Referrals & Time Per Learning Centre
- Appendix F: Wait List Referrals Per School Per Learning Centre Excel Chart

From

Interim Associate Director Curtis Ennis – Equity, Well-Being and Student Achievement
at Curtis.ennis@tdsb.on.ca

System Leader, Mental Health and Professional Support Services at Shameen
Sandhu@tdsb.on.ca



Appendix A
Psychological Services: Assessment Statistics
(2018-2019)

Cumulative Statistics for each LC from September 2018 - June 2019

	LC1	LC2	LC3	LC4	Total	Percentage*
Completed/ ¹ Removed	1738	1643	1228	1701	6310	77.4
In Progress	11	26	13	39	89	1.1
Waiting	518	250	349	639	1756	21.5
Total Referrals	2267	1919	1590	2379	8155	100

Waiting as of end of June: **1756**

Cumulative Statistics for each LC as of August 31, 2019

	LC1	LC2	LC3	LC4	Total	Percentage*
Completed/ ² Removed	1770	1663	1249	1745	6427	79.3
In Progress	11	26	13	39	89	1.1
Waiting	486	230	328	551	1595	19.6
Total Referrals	2267	1919	1590	2335	8111	100

* The calculations for each category were determined on the basis of total referrals

Summary:

Completed to June reporting period	6310
In Progress Cases	89
Completed in July/August 2019 EPO	117

Total Completed/Removed by end August 2019 **6427**
Remaining end of August 2019 **1595**

¹ ¹Referrals Completed: Assessment cases that have been completed or closed (e.g., parents refused assessment, moved out of board, etc.)

² Ibid.

Appendix B
Psychological Services: Assessment Statistics
(2019-2020)

Cumulative Statistics for each LC from September 2019-June 2020

	LC1	LC2	LC3	LC4	Total	Percentage*
Completed/ ³ Removed	1140	1082	830	1205	4257	68.4
In Progress	23	18	47	136	224	3.6
Waiting	461	266	403	617	1747	28
Total Referrals	1624	1366	1280	1958	6228	100

Wait list end of June 2020: **1747**

Cumulative Statistics for each LC as of August 31, 2020

	LC1	LC2	LC3	LC4	Total	Percentage*
Completed/ ⁴ Removed	1183	1188	902	1366	4639	74.5
In Progress	0	0	0	0	0	0
Waiting	441	178	378	592	1589	25.5
Total Referrals	1624	1366	1280	1958	6228	100

* The calculations for each category were determined on the basis of total referrals

Summary:

Completed to June reporting period	6228
Removed to June 2020	751
In Progress Cases	224
Completed in July/August 2020 EPO (<i>only in progress assessments</i>)	382

Total Completed/Removed by end August 2020 **6228**
 Wait list end of August 2020 **1589**

³ ¹*Referrals Completed*: Assessment cases that have been completed or closed (e.g., parents refused assessment, moved out of board, etc.)

⁴ Ibid.



Appendix C
Psychological Services: Recent Assessment Statistics
(As of April 2021)

Referral Statistics Per LC

	LC1	LC2	LC3	LC4	Total	Percentage
Completed/ ⁵ Removed	604	598	515	618	2335	40
Completed Gifted	297	237	22	380	936	16
In Progress	142(43)*	160(9)	189(9)	253(67)	744	13
Waiting	392(82)**	342(60)	383(75)	677(98)	1794	31
Total Referrals	1435	1337	1109	1928	5809	100

*Number in bracket indicates Gifted as part of the total

**Number in bracket indicates Gifted as part of the total

¹Referrals Completed: Assessment cases that have been completed or closed (e.g., parents refused assessment, moved out of board, etc.)

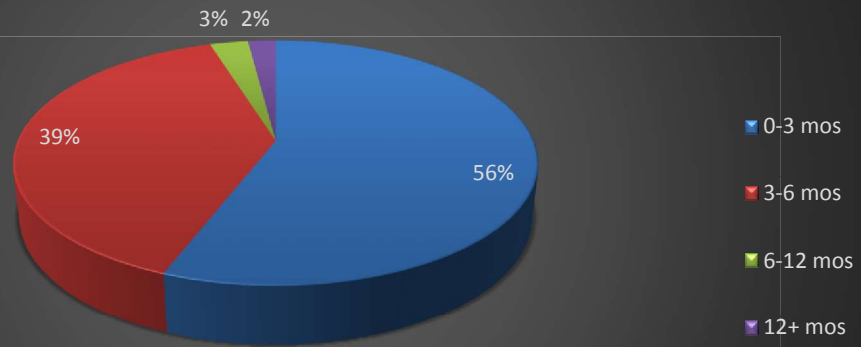
Appendix D
Psychological Services: Wait List Referrals & Wait Time Per Learning Centre (As of April 2021)

	LC1	LC2	LC3	LC4	Total	Percentage
0-3 Months	219	258	237	298	1012	56
3-6 Months	154	55	46	124	379	21
6-12 Months	11	1	58	33	103	6
12+ Months	8	28	42	222	300	17
	392	342	383	677	1794	100

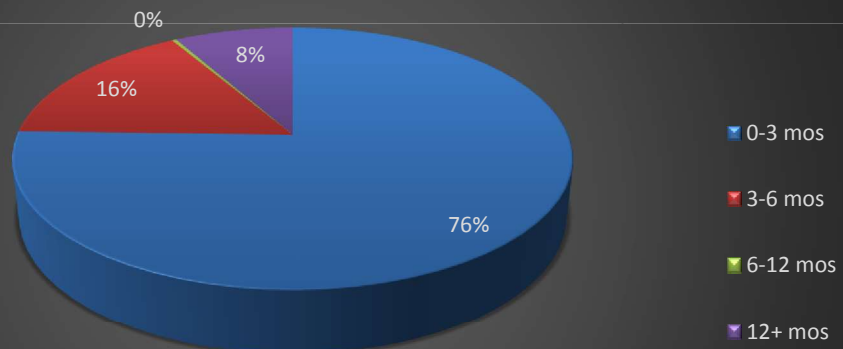
Appendix E

Psychological Services: Pie Graphs of Wait List Referrals & Time Per Learning Centre (As of April 2021)

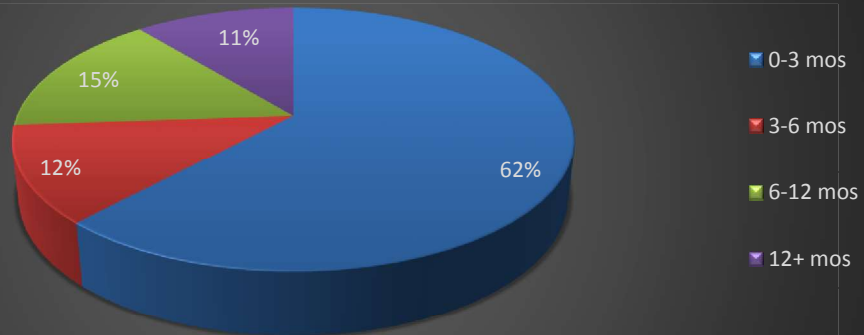
LC 1



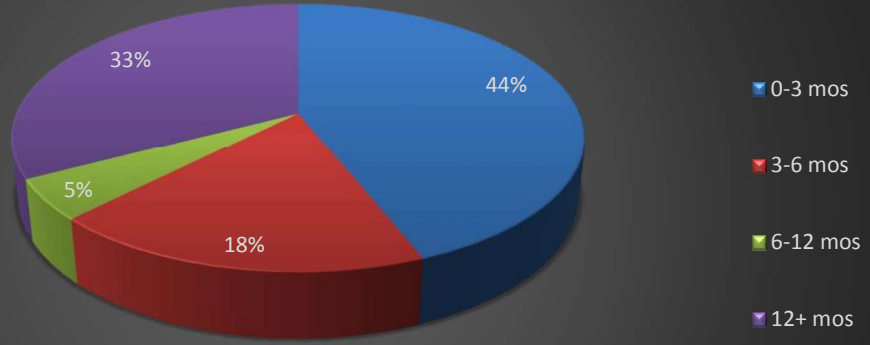
LC2



LC3



LC4



Learning Centre 1	Waiting	0-3 mos	3-6 mos	6-12 mos	12+ mos
Albion Height JS	5	3	1	0	0
Allenby JR PS	5	3	1	0	0
Amesbury MS	3	2	1	0	0
Armour Heights PS	2	1	1	0	0
Bala Avenue CS	3	2	1	0	0
Baycrest PS	2	1	1	0	0
Beaumont Heights JMS	6	3	1	0	0
Bedford Park PS	4	2	1	0	0
Bennington Heights	1	1	0	1	0
Bessborough Drive EMS	3	2	1	0	0
Bloordale MS	2	1	1	0	0
Bloorlea MS	2	1	1	0	0
Blythwood JR PS	3	2	1	1	0
Braeburn JS	2	1	1	0	0
Briarcrest JS	3	2	1	0	0
Broadacres JS	3	2	1	0	0
Brookhaven PS	5	3	1	0	0
Brown Jr PS	4	2	1	1	0
CR Marchant	2	1	1	0	0
Cedarvale CS	1	1	0	0	0
Charles E Webster Jr PS	5	3	2	0	0
Claireville JS	2	1	1	0	0
Cordella JR PS	2	1	1	0	0
Cottingham PS	1	1	0	1	0
Davisville JR PS (Spectrum Alt.)	4	2	2	0	0
Deer Park Jr/Sr PS	2	1	1	0	0
Denlow PS	2	1	1	0	0
Dennis Avenue CS	1	1	0	0	0
Dixon Grove JMS	3	2	1	0	0
Dunlace PS	1	1	0	1	0
Eatonville JS	2	1	1	0	0
Eglinton PS	4	2	2	0	0
Elmbank JMA	4	2	2	0	0
Elmlea JS	3	2	1	0	0
Fairbank PS	2	1	1	0	0
Flemington PS	2	1	1	1	0
Forest Hill Jr/Sr PS	3	2	1	0	0
Fraser Mustard ELA	5	3	1	0	0
George Anderson	1	1	0	0	0
George Syme CS	4	2	1	0	0
Glen Park PS	4	2	1	0	0
Glenview Sr PS	2	1	1	0	0
Gracefield PS	2	1	1	0	0
Greenholme JMS	4	2	2	2	0
HJ Alexander CS	6	3	2	0	0
Harrison PS	1	1	0	0	0

Agenda Page 65

Harwood PS	1	1	0	0	0
Highfield JS	7	4	2	0	0
Hillcrest CS	2	1	1	2	0
Hilltop MS	4	2	2	0	0
Hodgson MS	1	1	0	0	0
Hollycrest MS	2	1	1	0	0
Humber Valley Village JMS	1	1	0	0	0
Humberwood Downs JMA	7	4	3	0	0
Humewood CS	3	2	1	0	0
JR Wilcox CS	5	3	2	0	0
John D. Parker JS	5	3	2	0	0
John Fisher Jr PS	2	1	1	0	0
John G Althouse MS	1	1	0	0	0
John R Robertson Jr PS	3	2	1	0	0
John Wanless Jr PS	5	3	1	0	0
Joyce PS	2	1	1	0	0
Keelesdale Jr PS	1	1	0	0	0
Kingsview Village JS	7	4	2	0	0
Lambton Park CS	2	1	1	0	0
Lawrence Heights MS	2	1	1	0	0
Ledbury Park Jr/Sr PS	3	2	1	0	0
Maple Leaf PS	3	2	1	0	0
Maurice Cody Jr PS	5	3	1	0	0
McMurrich PS	5	3	1	0	0
Melody Village JS	2	1	1	0	0
Mill Valley JS	1	1	0	0	0
Millwood JS	2	1	1	0	0
North Kipling JSM	6	3	1	0	1
North Prep Jr PS	2	1	2	0	0
Northlea EMS	5	3	2	0	0
Oriole Park Jr PS	2	1	1	0	0
Owen PS	4	2	1	0	0
Park Lane PS	4	2	2	0	1
Parkfield JS	5	3	2	0	0
Pelmo Park PS	4	2	2	0	0
Portage Trail CS	6	3	2	0	0
Princess Margaret Jr PS	4	2	2	0	0
Rippleton PS	2	1	2	0	1
Rivercrest JS	2	1	2	0	0
Rockcliffe MS	2	1	1	0	0
Rolph Road PS	2	1	1	0	0
Roselands Jr PS	4	2	2	0	0
Rosethorn JS	2	1	2	0	1
Seneca School	6	3	2	0	0
Silverthorn CS	5	3	2	0	0
Smithfield MS	3	2	2	0	0
St Andrew's MS	2	1	2	0	0

Agenda Page 66

St George's JS	2	1	2	0	1
Sunnyview Jr/Sr PS	2	1	2	0	0
The Elms JMS (Boy's Academy)	5	3	2	0	0
Thornccliffe Park PS	14	8	5	0	0
Valleyfield JS	4	2	2	0	1
Wedgewood Jr PS	4	2	2	0	0
Wellesworth JS	2	1	2	0	0
West Glen JS	2	1	2	0	0
West Humber JMS	2	1	1	0	1
West Preparatory PS	5	3	2	0	0
Westmount JS	2	1	1	0	0
Weston Memorial Jr PS	2	1	1	0	0
Westway JS	2	1	1	0	0
Windfields JHS	3	2	1	0	1
Winona Drive Sr PS	2	1	1	0	0
Central Etobicoke	3	2	1	0	0
Etobicoke CI	3	2	1	0	0
Forest Hill CI	2	1	1	0	0
Frank Oke SS/Haney	2	1	1	0	0
George Harvey CI	2	1	1	0	0
John Polanyi CI	2	1	1	0	0
Kipling CI	3	2	1	0	0
Lawrence Park CI	3	2	1	0	0
Leaside HS	1	1	0	0	0
Marc Garneau	1	1	0	0	0
Martingrove CI	3	2	2	0	0
North Albion CI	2	1	2	0	0
North Toronto CI	2	1	1	0	0
Northern SS	3	2	1	0	0
Richview CI	2	1	1	0	0
S.E.E.	0	0	0	0	0
Silverthorn CI	1	1	0	0	0
Thistleton CI	1	1	0	0	0
West Humber CI	2	1	1	0	0
Weston CI	2	1	1	0	0
Yorkdale SS	0	0	0	0	0
York Humber HS	2	1	1	0	0
York Memorial CI	4	2	2	0	0
York Mills CI	2	1	1	0	0
York Mills CI	2	1	1	0	0
TOTAL	392	219	154	11	8

LEARNING CENTRE 2	0-3 mos	3-6 mos	6-12 mos	12+ mos
A. Y. Jackson SS		2		
Africentric Alternative				
Agincourt Jr PS				
Ancaster PS		1		
Arbor Glen				
Arbor Glen PS	8			
Arbor Glen PS				
Avondale Alt				
Avondale Alternative ES	2			
Avondale Elementary				
Avondale PS	9			
Bayview MS	1			
Beverly Heights MS		5		
Beverly Glen Jr PS	3			
Blacksmith PS				
Blaydon PS	1			
Brian PS	6			
Brian PS	2			
Bridlewood Jr PS	5			
Broadlands PS	4			
Brookmill Blvd Jr PS	1	2		
Brookview MS				
Calico PS				
Cameron PS	4			
Cameron PS				
Cassandra PS	4	2		
Chalkfarm PS				
Charles H. Best MS				
Cherokee PS				
Cherokee PS				
Chester Le Jr PS	1			
Churchill				
Churchill PS	20			
Claude Watson PS				
Cliffwood PS	6			
Cresthaven PS	2			
Crestview PS	6			
Cummer Valley MS				2
CW Jefferys CI				
Dallington PS				
David Lewis PS	1	2		
Daystrom PS		1		
Derrydown PS				
Don Mills CI	1			
Don Mills MS	4			
Don Valley MS	1			

Donview MHS		2		3
Downsview PS		3		
Downsview SS		1		
Dr. Norman Betnune				
Drewry				
Drewry SS				
Driftwood PS				
Dublin Heights EMS	8	1		
Earl Haig SS				
Earl Haig SS				
Elia MS	1			
Elia MS				
Elkhorn PS	3			
Emery SS	1	1		
Ernest PS				
Fairglen PS	1	1		
Faywood				
Faywood ABC				
Faywood Arts-Based	5			
Fenside PS				
Finch PS				
Firgrove PS	1	1		
Fisherville Sr PS				
Forest Manor PS	3	1		
Gateway PS	1	1		
George Harvey				
George S. Henry Academy	1			
Georges Vanier SS		1		
Gosford PS		1		
Gosford PS				
Gracedale PS				
Gracedale PS	2			
Greenland PS	1			
Grenoble PS				
Gulfstream PS	4	2		
Gulfstream PS	2			
Highland Hts Jr PS				
Highland MS		1		
Highland MS				
Highview PS				
Hillmount PS	1			
Hollywood PS				
Hollywood PS	1			
Humber Summit MS				
Inglewood Hts Jr PS	4			
J.B. Tyrell PS				
JB Tyrell PS				

Agenda Page 69

John Buchan Sr PS	1		1	
Kennedy PS	2			
Kingslake PS		1		
L.B. Pearson ES	6			
Lamberton PS				
L'Amoreaux CI	3			
Lescon PS				
Lillian PS	5	2		1
Lynngate Jr PS	2	1		1
Lynnwood Heights Jr PS	3			
McKee PS	35	1		
McKee PS				
Milne Valley MS	1			
Muirhead PS				
Muirhead PS		1		
Newtonbrook SS	3	1		
Norman Ingram PS	1			
North Bridlewood Jr PS				1
Northview Heights SS				
Oakdale Park MS	1	1		2
Other schools				
Pauline Johnson Jr PS				
Pierre Laporte MS	1	1		
Pineway PS	1			
Pleasant PS	6	2		
Pleasant PS				
Pleasant View MS				
R.J. Lang EMS	7	4		
Ranchdale PS				
Rene Gordon Health & W				
Rockford PS				
Roywood PS	5			1
Seneca Hill PS				
Seneca Hill PS				
Shaughnessy PS	3	1		
Sheppard PS		2		1
Shoreham Public Sports	3			
Silver Springs PS	3			1
Sir Ernest MacMillan Sr PS	1			
Sir John A. MacDonald CI				
Sir Samuel Steele Jr PS	5			2
Sir William Osler HS	2			
Sloane PS	1			
Stanley PS				
Steelesview PS				
Stephen Leacock CI		1		
Stilecroft PS				

Agenda Page 70

Summit Heights PS	2				
Tam O'Shanter Jr PS	1				
Terry Fox PS	2	2			
Three Valleys PS	1				
Timberbank JPS	1	1			
Timberbank Jr PS					
Timberbank Jr PS	1				
Topcliff PS					
Tumpane PS					
Valley Park MS					
Valley Park MS					
Valley Park MS	1			12	
Victoria Park CI	1				
Victoria Village PS	1				
Vradenburg Jr PS	2				
Westview SS	1				
Willowdale MS	1				
Wilmington PS					
Wm Lyon Mackenzie CI	1				
Woodbine MS	3			1	
Yorkview MS	3				
Yorkwoods PS	2	1			
Zion Heights MS	1				
TOTAL	258	55	1	28	342

Agenda Page 71

LEARNING CENTRE 3	Waiting	0-3 mos	3-6 mos	6-12 mos	12+ mos
ASE 1	0	0	0	0	0
Agincourt C.I.	3	2	0	0	0
Agnes MacPhail	2	1	0	0	0
Albert Campbell C.I.	0	0	0	0	0
Alexander Stirling Public	2	1	0	0	0
Alexmuir PS	2	1	0	0	0
Alvin Curling	3	2	0	0	0
Anson Park Public	3	2	0	0	0
Anson S. Taylor Jr.	1	1	0	0	0
Banting and Best	0	0	0	0	0
Bellmere Jr.	2	1	0	0	0
Ben Heppner Vocal Mus. Ac.	1	1	0	0	0
Bendale Jr.	0	0	0	0	0
Berner Trail Jr.	4	2	0	1	0
Birch Cliff	7	4	1	1	1
Birch Cliff Hts	4	2	0	1	0
Birchmount Park Cl	2	1	0	0	0
Blantyre Public	5	3	1	1	1
Bliss Carman Sr.	2	1	0	0	0
Brimwood Blvd Jr	2	1	0	0	0
Brookside Public	3	2	0	0	0
Buchanan Public	2	1	0	0	0
Burrows Hall Jr.	0	0	0	0	0
C.D.Farquharson	5	3	1	1	1
Cedar Dr. Jr.	0	0	0	0	0
Cedarbrae C.I.	9	6	1	1	1
Cedarbrook Jr.	5	3	1	1	1
Centennial Rd. Jr.	0	0	0	0	0
Charles Gordon Sr.	0	0	0	0	0
Charlottetown Jr.	1	1	0	0	0
Chartland Jr. PS	1	1	0	0	0
Chief Dan George Public	1	1	0	0	0
Chine Dr. Public	6	4	1	1	1
Churchill Hts. Public	1	1	0	0	0
Clairlea Public	4	2	0	1	0
Cliffside Jr.	0	0	0	0	0
Cornell Jr.	6	4	1	1	1
Corvette Jr.	4	2	0	1	0
Courcelette Public	5	3	1	1	1
Danforth Gardens	1	1	0	0	0
David & Mary Thomson C.I.	3	2	0	0	0
Delphi Secondary Alt.	0	0	0	0	0
Donwood Park Jr.	10	6	1	2	1
Dorset Park Jr.	0	0	0	0	0
Dr. M. Hilliard Sr	0	0	0	0	0

Agenda Page 72

Eastview Jr.	3	2	0	0	0
Edgewood Public	3	2	0	0	0
Elizabeth Simcoe Jr.	7	4	1	1	1
Ellesmere-Statton Public	0	0	0	0	0
Emily Carr Public	1	1	0	0	0
Fairmount Jr.	7	4	1	1	1
Fleming Public	0	0	0	0	0
Galloway Rd. Public	2	1	0	0	0
General Brock Public	4	2	0	1	0
General Crerar Public	3	2	0	0	0
George B. Little Jr.	6	4	1	1	1
George P. Mackie Jr.	2	1	0	0	0
George Peck Public	0	0	0	0	0
Glamorgan Jr.	1	1	0	0	0
Glen Ravine Jr.	2	1	0	0	0
Golf Rd. Jr.	1	1	0	0	0
Grey Owl Jr.	0	0	0	0	0
Guildwood Jr.	5	3	1	1	1
H.A.Halbert Jr.	0	0	0	0	0
Heather Hts. Jr.	5	2	1	1	1
Henry Hudson Sr.	4	2	0	1	0
Henry Kelsey	1	1	0	0	0
Heritage Park Public	6	4	1	1	1
Highcastle Public	6	3	1	1	1
Highland Creek Public	5	3	1	1	1
Hunter's Glen Jr.	2	1	0	0	0
Ionview Public	1	1	0	0	0
Iroquois Jr PS	2	1	0	0	0
J.G.Workman Public	0	0	0	0	0
Jack Miner Sr.	0	0	0	0	0
John A. Leslie Public	3	2	0	0	0
John G. Diefenbaker	0	0	0	0	0
John McCrae Sr.	2	1	0	0	0
Joseph Brant	7	4	1	1	1
Joseph Howe Sr.	0	0	0	0	0
Knob Hill Jr.	3	2	0	0	0
Lester B Pearson C.I.	1	1	0	0	0
Lord Roberts Jr.	6	4	1	1	1
Lucy Maud Montgomery	2	1	0	0	0
Macklin	4	2	0	1	0
Malvern Jr. PS	0	0	0	0	0
Manhattan Park Jr.	1	1	0	0	0
Maplewood High	5	3	1	1	1
Mary Shadd Public	2	1	0	0	0
Maryvale Public	0	0	0	0	0
Mason Rd. Jr.	4	2	0	1	0
Meadowvale Public	0	0	0	0	0

Agenda Page 73

Military Trail Public	4	2	0	1	0
Milliken	2	1	0	0	0
Morrish Public	4	2	0	1	0
Native Learning Centre	0	0	0	0	0
Norman Cook Jr.	0	0	0	0	0
North Agincourt	4	2	0	1	0
North Bendale Jr.	0	0	0	0	0
Oakridge Public	12	7	1	2	1
Parkview Alternative	0	0	0	0	0
Percy Williams Jr.	0	0	0	0	0
Poplar Rd. Jr.	7	4	1	1	1
Port Royal	7	3	1	1	1
R.H.King Academy	4	2	0	1	0
Regent Hts. Jr.	7	4	1	1	1
Robert Service Sr.	1	1	0	0	0
Rouge Valley Public	1	1	0	0	0
Samuel Hearne Sr.	5	3	1	1	1
SATEC@ W.A.Porter CI	4	2	0	1	0
Scarb. Centre for Alt.Studies	0	0	0	0	0
Scarborough Village	1	1	0	0	0
Sir Alexander MacKenzie Sr.	0	0	0	0	0
Sir Oliver Mowat CI	3	2	0	0	0
Sir Wilfrid Laurier CI	4	2	0	1	0
South-East Year-Round Alt. Centre	0	0	0	0	0
St. Andrew's Jr.	15	9	1	2	1
St. Margaret's Public	7	4	1	1	1
Taylor Creek	10	6	1	2	1
Tecumseh Sr	3	2	0	0	0
Terraview Willowfield	3	2	0	0	0
Thomas L. Wells Public	3	3	0	0	0
Tom Longboat Jr.	5	3	1	1	1
Tredway Woodsworth	5	3	1	1	1
Walter Perry Jr.	4	2	0	1	0
West Hill C.I.	2	1	0	0	0
West Hill Public	3	2	0	0	0
West Rouge Jr.	5	3	1	1	1
Wexford C.I.	2	1	0	0	1
Wexford Public	0	0	0	0	0
White Haven PS	0	0	0	0	0
William G. Davis Jr.	2	1	0	0	0
William G. Miller Public	9	6	1	1	1
Willow Park Jr.	0	1	1	1	0
Winston Churchill CI	1	1	0	0	0
Woburn C.I.	2	2	0	0	0
Woburn Jr.	1	1	0	0	0
TOTAL	383	237	46	58	42

Agenda Page 74

LEARNING CENTRE 4	0-3 mos	3-6 mos	6-12 mos	12+ mos
Adam Beck Jr PS	3	0	1	0
Alexander Muir/Gladstone Ave Jr & Sr	2	0	1	3
ALPHA Alternative School Jr	1	0	0	0
ALPHA Alternative School Jr	0	1	0	0
ALPHA II Alternative School Sr	1	0	0	0
Annette Street Jr & Sr PS	3	2	1	1
Balmy Beach Community School	0	0	1	1
Beaches Aternative Jr PS	1	0	0	0
Beverley School	2	0	0	3
Blake Street Jr PS	12	0	0	8
Bloor Cl	1	0	0	0
Bowmore Road Jr & Sr PS	4	2	0	0
Brock PS	1	2	0	0
Bruce Jr PS	2	0	1	0
Carleton Village Jr & Sr Sports & Wellness Acad	2	0	0	9
Castlebar Jr	6	0	0	0
Central Technical School	1	1	0	0
Central Toronto Academy	1	0	0	0
Charles G Fraser Jr PS	2	6	0	2
Chester ES	4	0	0	2
Church Street Jr PS	1	0	0	2
City Adult Learning Centre (CALC)	1	0	0	0
City School	1	0	0	0
City View Alternative Sr. School	1	0	0	0
Clinton Street Jr PS	1	1	0	0
Contact Alternative School	1	0	0	0
Cosburn MS	3	1	0	1
Crescent Town Elementary School	3	1	0	2
D A Morrison Middle School	2	0	0	2
da Vinci School (Alt)	1	0	0	0
Danforth C & TI	1	3	0	0
David Hornell JS	1	4	0	1
Delta Alternative Sr School	1	0	0	0
Dewson Street Jr PS	3	0	0	0
Diefenbaker ES	1	2	2	0
Dovercourt Jr PS	3	0	0	0
Downtown Alternative School	2	0	0	2
Downtown Vocal Music Academy of Toronto	0	0	0	0
Duke of Connaught Jr & PS	6	3	0	2
Dundas Jr PS	4	1	0	2
Earl Beatty Jr & Ps	3	3	0	1
Earl Grey Sr PS	1	1	0	3
Earl Haig PS	4	0	0	2
EAST (East Alternative School of Toronto)	0	0	0	0
East York Alternative SS	1	0	0	0
East York Cl	0	0	0	2
Eastdale Cl	1	1	0	0
Equinox Holistic Alternative School	1	0	1	0

Agenda Page 75

Essex Jr & Sr PS	1	1	1	1
Étienne Brûlé JS	1	1	0	0
Etobicoke School of the Arts	1	0	0	0
Etobicoke Year-Round Alt. Centre	1	0	0	0
F.H. Miller Jr PS	2	0	0	0
Fairbank Memorial Community School	1	2	0	2
Fern Avenue PS	2	3	0	6
Frankland Community School Jr	3	0	0	1
Garden Avenue Jr PS	1	1	0	4
General Mercer Jr PS	0	0	0	4
George R Gauld JS	0	0	0	2
George Webster Jr PS	0	1	2	10
Givins/Shaw Jr PS	0	2	1	0
Gledhill Jr PS	1	0	0	3
Glen Ames Sr PS	1	0	0	0
Gordon A Brown MS	0	0	0	3
Greenwood SS	1	1	0	0
Harbord CI	1	0	0	0
Hawthorne II Bilingual Alternative School	2	0	0	0
Heydon Park SS	1	0	0	1
High Park Alternative Jr PS	1	0	0	0
Horizon Alternative Sr School	1	0	0	0
Howard Jr PS	3	0	0	0
Humbercrest PS	9		2	3
Humberside CI	1	0	0	1
Huron Street Jr PS	1	1	0	2
Indian Road Crescent Jr PS	2	0	0	0
Inglennook Community School	1	0	0	0
Island Public/Natural Science School	5	0	0	2
Islington JMS	1	0	0	1
Jackman Avenue Jr PS	14	2	0	0
James S Bell Jr Middle Sports & Wellness Acade	1	1	0	1
Jarvis CI	1	0	0	0
Jean Lumb PS	2	0	0	1
Jesse Ketchum PS	0	1	0	2
John English JMS	2	0	0	1
Kapapamahchakwew - Wandering Spirit School	1	2	0	3
Karen Kain School of the Arts	3	2	0	0
Keele Street Jr PS	2	0	4	1
Kensington Jr Community School	1	1	0	0
Kew Beach Jr PS	3	2	1	0
Kimberley Jr PS	1	0	0	0
King Edward Jr. & Sr. PS	1	0	0	3
King George Jr PS	2	1	0	0
Lakeshore CI	1	0	0	0
Lambton Kingsway JMS	0	4	0	2
Lanor JMS	2	2	0	1
Leslieville Jr PS	1	0	0	10
Lord Dufferin Jr & Sr PS	0	5	0	1

Agenda Page 76

Lord Lansdowne PS	1	1	0	0
Lucy McCormick School Sr	1	0	0	4
Malvern CI	1	0	1	0
Market Lane Jr & Sr PS	1	0	0	7
Monarch Park CI	1	1	0	2
Montrose Jr PS	2	0	0	1
Morse Street Jr PS	0	4	0	0
Mountview Alternative Jr School	0	1	0	1
Native Learning Centre	1	0	0	0
Nelson Mandela Park PS	0	0	0	1
Niagara Street Jr PS	1	0	0	0
Norseman Jr JMS	0	6	0	5
Norway Jr Ps	3	2	0	0
Oakwood CI	1	0	0	0
Oasis Alternative SS	0	0	0	0
O'Connor PS	0	0	0	4
Ogden Jr PS	2	0	0	1
Orde Street PS	2	3	0	0
Ossington/Old Orchard Jr PS	1	0	0	0
Palmerston Avenue Jr PS	5	0	0	2
Pape Avenue Jr PS	2	2	0	1
Park Lawn Jr JMS	6	0	0	3
Parkdale CI	0	0	0	0
Parkdale Jr & Sr PS	4	0	0	5
Parkside ES	1	0	0	0
Pauline Jr PS	1	2	0	0
Perth Avenue Jr PS	0	1	2	0
Presteyn Heights Jr PS	2	0	0	0
Queen Alexandra MS	1	0	0	5
Queen Victoria Jr PS	9	4	0	1
Quest Alternative Sr School	2	0	0	0
R H McGregor Jr PS	3	2	1	3
Rawlinson CS	2	1	0	5
Regal Road PS	1	3	0	1
Riverdale CI	2	0	0	0
Roden PS	3	2	0	8
Rose Avenue Jr PS	2	2	0	0
Rosedale Heights School of Arts	1	0	2	1
Rosedale Jr PS	3	0	0	0
Runnymede CI	0	1	0	0
Runnymede Jr & Sr PS	1	0	0	0
Ryerson Community School	2	2	3	3
S.O.L.E. (School of Life Experience)	2	0	0	0
Second Street JMS	2	0	0	0
Secord Elementary	7	1	0	6
SEED Alternative School	1	0	0	0
Selwyn Jr PS	2	0	0	0
Seventh Street Jr School	1	0	0	0
Shirley Street Jr PS	1	0	0	0

Agenda Page 77

Sir Adam Beck Jr School	2	2	0	0	
Sprucecourt PS	3	1		7	
Subway Academy I	1	0	0	0	
Subway Academy II	0	0	0	0	
Sunnylea Jr School	1	0	0	0	
Swansea Jr & Sr PS	2	0	0	0	
The Grove CS	0	0	0	0	
The Student School	0	0	0	0	
The Waterfront School	0	2	0	0	
Twentieth Street Jr School	0	2	0	4	
Ursula Franklin Academy	1	0	0	0	
Victoria Park Elementary	1	1	0	1	
Warren Park Jr PS	4	0	0	5	
West End Alternative School	1	0	0	0	
Western Technical-Commercial School	1	0	0	0	
Westwood MS	2	1	0	0	
Whitney Jr PS	2	1	0	1	
Wilkinson Jr PS	0	0	0	2	
William Burgess ES	2	0	0	4	
William J McCordic School	1	0	0	1	
Williamson Road Jr PS	2	2	3	1	
Winchester Jr & Sr PS	4	0	2	2	
Withrow Avenue Jr PS	4	0	1	1	
TOTAL	298	124	33	222	677

Blank Page