

**SEAC MEETING:**

**SECONDARY PROGRAM REVIEW**

**FEBRUARY 3, 2020**



# Secondary Program Review

What it is and why it's necessary

### What?

- TDSB currently has 111 secondary schools, with over 20,000 unused spaces
- Develop an 8-10 year plan to consolidate schools and improve access to programming, including strengthening local neighbourhood schools
- The Review will look at all types of schools, including considering the consolidation of small congregated sites or the relocation of congregated sites into existing secondary/elementary schools

### Why?

- Consolidation will increase student course options and experiences
- Unused space comes at a financial cost. Money can be redirected into programming supports for students and/or into capital repairs

### New Realities

#### **Demographic Changes and the Impact on Enrolment**

- The secondary panel has declined from a high of 140,433 students in 1976 to approximately 72,600 students today.

#### **School Utilization**

- As of October 31, 2019, the average utilization rate across all 111 secondary schools was 78%.

#### **Aging Buildings**

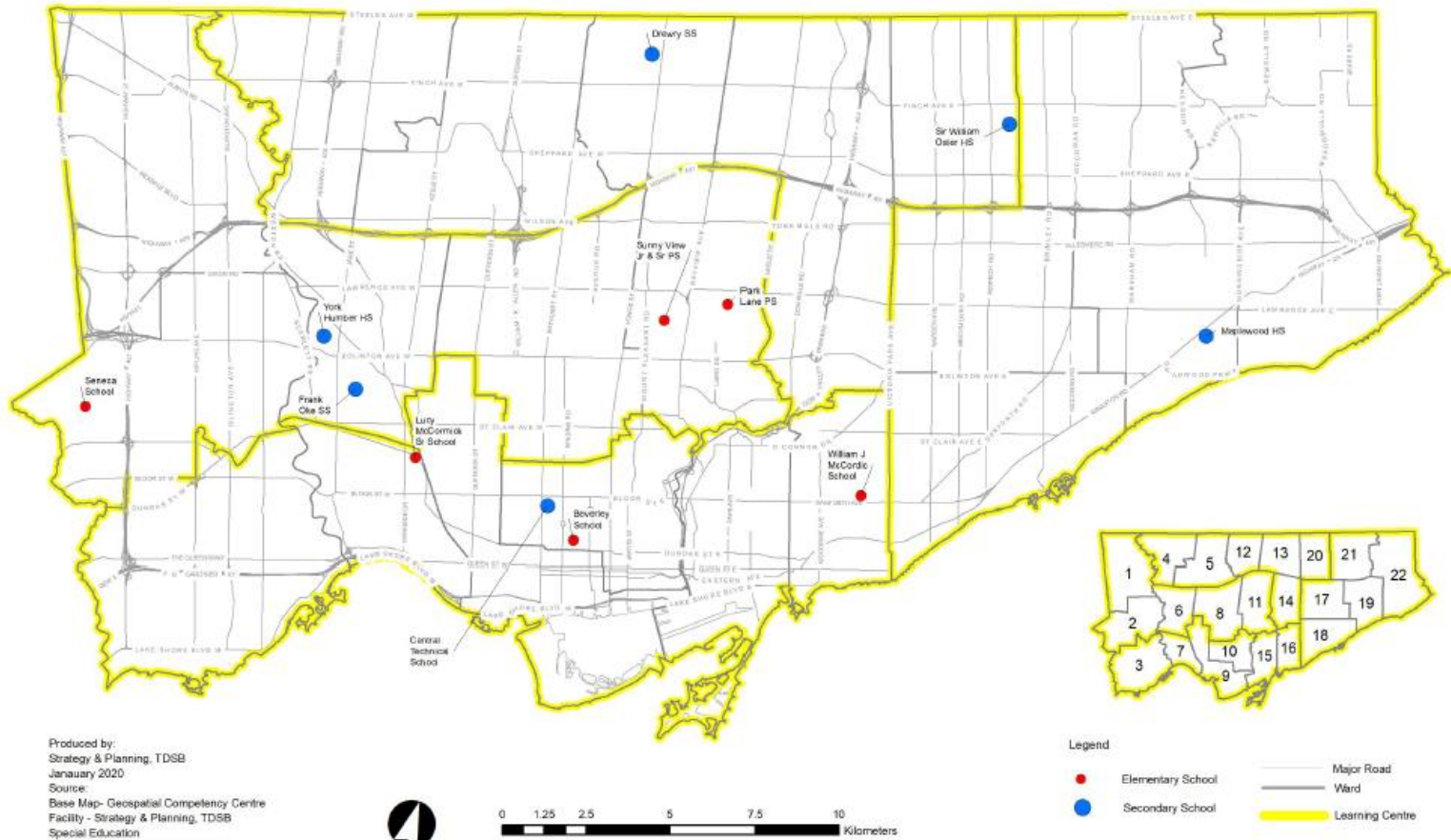
- The average age of our secondary school buildings is 64.

#### **Change to Secondary Average Class Size**

- The recent changes to secondary school class size significantly impact staffing and program offerings

#### **Polarization of City of Toronto**

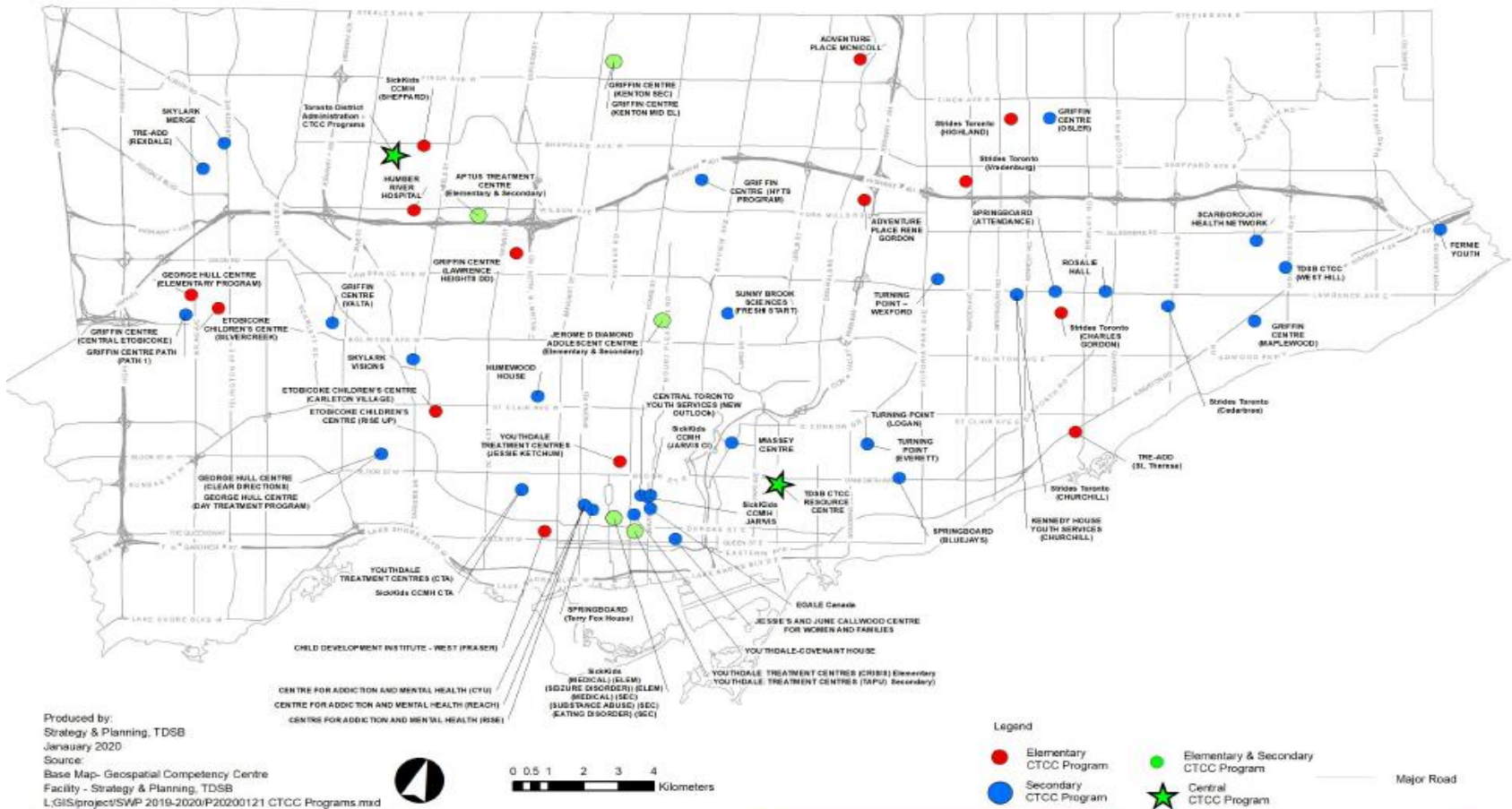
- Secondary students are choosing programs and schools in higher income areas and fleeing from those in lower income areas.



# Current Enrolment and Utilization

School Name	Panel	Capacity	Enrolment (Oct 31st 2019)	Utilization
Beverley School	E	117	78	67%
Lucy McCormick Sr School	E	171	69	40%
Park Lane PS	E	90	71	79%
Seneca School	E	117	82	70%
Sunny View Jr & Sr PS	E	207	71	34%
William J McCordic School	E	153	70	46%
Central Etobicoke HS	S	378	134	35%
Drewry SS	S	399	99	25%
Frank Oke SS	S	144	86	60%
Maplewood HS	S	501	136	27%
Sir William Osler HS	S	528	195	37%
York Humber HS	S	441	164	37%

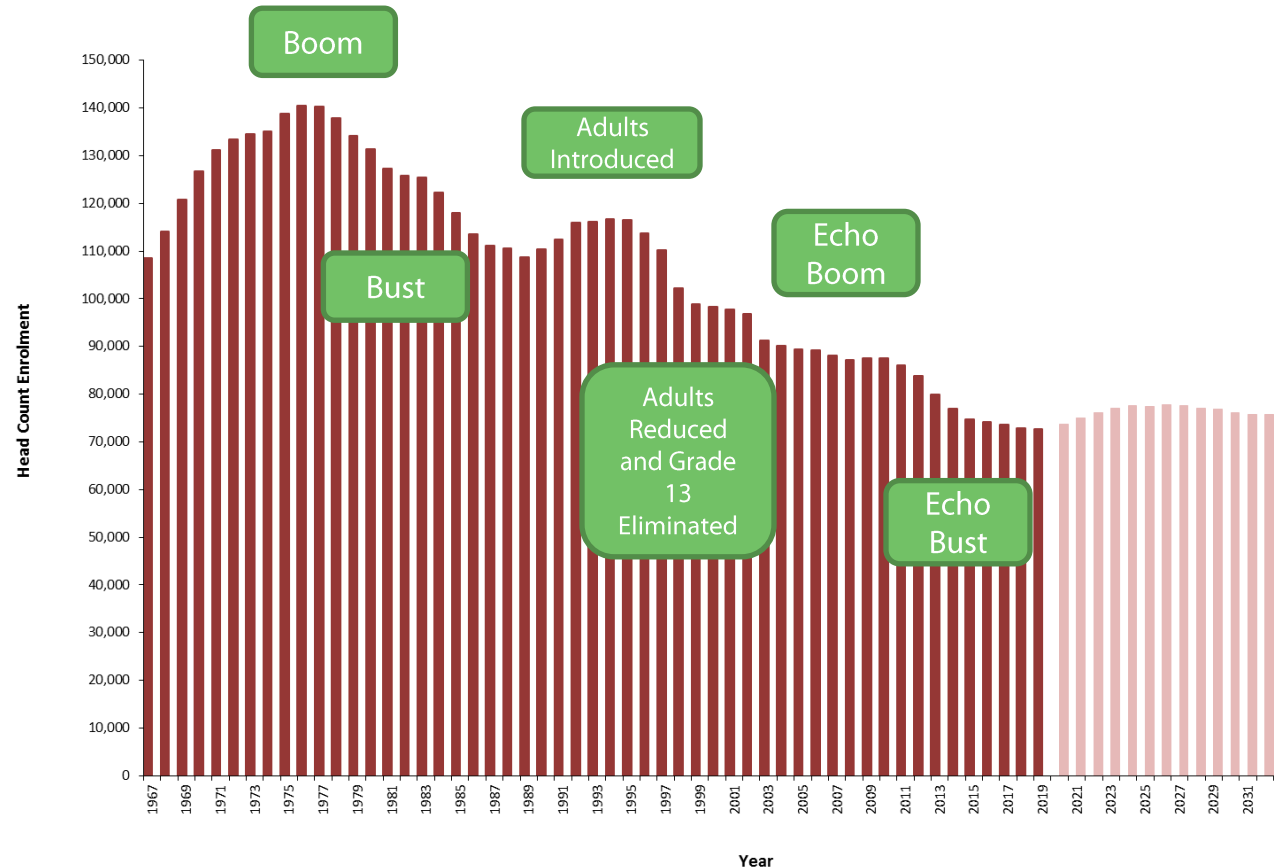
# SEAC Meeting: Secondary Program Review





# What's Happening with Secondary Enrolment?

- First peak in 1976.
- First low in 1989 – decline of 32,000 (-23%) over 13 years.
- Second peak in 1994 – growth of 8,000 (+6%) over 5 years.
- Second low in 2008 – decline of 29,000 (-25%) over 14 years.
- Third peak in 2010 – growth of 370 (+0.3%) over 2 years.
- Decline of 14,925 (-17%) from 2010 to now.
- Reached a period of decline and enrolment is projected to marginally increase, then stabilize



# Secondary Program Review

## Facilitated Discussion

# Secondary Program Review

- What are the positive aspects of the school your child currently attends?
- What challenges has your child experienced at your current school?
- Do you see benefits to consolidating congregated sites or the relocation of programs within existing secondary/elementary schools? If so, what? If not, please explain.
- What impact will consolidation have for CTCC?
- Any additional comments?



Toronto  
District  
School  
Board