

School Address

22 South Dr.
Toronto, M4W1R1
Tel: (416) 393-1330
Fax: (416) 393-1332

Principal

Pat Chater

Administrative Office Staff

Janice Isopp

*

School Council Chair(s)

Sue Gray
Mandy Birch

*

Ward 14 Trustee

Sheila Ward
(416) 397-2571

Superintendent

Andrea Alimi
(416) 394-2050

Director of Education

Chris Spence

OUR SCHOOL

Rosedale Junior Public School has been providing a high level of academics, artistic enrichment and community involvement for the children of Rosedale and nearby neighbourhoods for over a century. Founded in 1891, the kindergarten through grade six community school was re-constructed to its present location in 1957. Two new playgrounds and a garden were added in 2002.

Our school's motto, "integrity and scholarship" is evidenced in our school's safe and nurturing environment. The parents, who are very involved with the schooling of their children, work closely with the staff in mutual advocacy for happy, healthy children who take pride in being independent learners, well-informed citizens and responsible leaders. We are committed to furthering our development of an extensive Arts program which includes partnerships with music, dance, visual and drama artists, such as Prologue for the Performing Arts. Many students participate in our widely acclaimed steel pan band under the direction of Salmon Cupid. Fully committed to healthy bodies, lifestyles and minds, our enthusiastic teachers take pride in encouraging the participation and accomplishment of our students in a variety of sports such as flag football, soccer, volleyball, basketball, track, cross-country and for the first time, cricket. An optional lunch hour enrichment program during the winter months provides students with instruction in outdoor games, power soccer, yoga, chess, the Arts and Crafty Couture. The school houses South Drive Children's Circle which works in conjunction with the school to provide childcare under the supervision of Gloria Samuel.

Our Code of Behaviour, which focuses on the peaceful resolution of problems through self respect and co-operation, is practised through the combined guidance of our parents, staff, students, and student council. Last year, we introduced a program called Second Steps to reinforce with students how to keep themselves safe and get along with one another in school, at home and in their communities.

With almost 200 students, we offer an intimate environment for learning both in the classroom and on the playing field.

OUR STUDENTS (As of spring 2008)

	<u>No.</u>	<u>Percent</u>
✦ Total number of students:	196	
Junior Kindergarten - Grade 3	132	
Grade 4 - Grade 6	64	
✦ Gender:		
Female	89	45%
Male	107	55%
✦ Primary language other than English:	29	15%*
✦ Students born outside of Canada:		
Students living in Canada for 2 years or less	5	3%
Students living in Canada for 3 - 5 years	5	3%

* Calculation does not include students for whom language information is missing.

THE SCHOOL BOARD PROVIDES:

The Toronto District School Board (TDSB), in partnership with students, parents, teachers and all our communities, is committed to taking responsibility for continuous improvement of schools. This is achieved through:

- ✦ **Relevant Curriculum**
- ✦ **Equity**
- ✦ **Accountability**

Regular Instructional Programs

- ✦ Languages - English, English as a Second Language, and French
- ✦ Mathematics, Science and Technology
- ✦ Arts - Music, Visual Arts, Drama and Dance
- ✦ Social Studies, Health and Physical Education

Special Education Programs

A variety of special education programs and services are offered to meet the needs of all students, including students with exceptionalities, such as behavioural, communication, intellectual, physical and multiple learning disabilities. Students' exceptionalities are identified through a formal review process undertaken by an Identification, Placement and Review Committee (IPRC).

OUR SCHOOL ALSO OFFERS:

Co-Curricular

Arts Programs

- ✦ Dramatic Arts:
Lorraine Kimsa Theatre for Young People
- ✦ Music:
Choir, Music Concerts / Performances, Steel Pan/Band, Strings, Vocal
- ✦ Visiting Artists:
Dance, Drama, Prologue to the Performing Arts
- ✦ Visual Arts:
Crafts, Excursions

Athletic Teams

- ✦ Basketball
- ✦ Cricket
- ✦ Cross Country
- ✦ Flag Football
- ✦ Slo-Pitch
- ✦ Softball
- ✦ Track and Field
- ✦ Volleyball

Clubs

- ✦ Announcement Club
- ✦ Chess
- ✦ Library Helpers
- ✦ Math
- ✦ Senior Citizen Club - Reading Buddies
- ✦ Sewing
- ✦ Silver Birch Book Club

Leadership

- ✦ Kindergarten Assistants
- ✦ Lunch Monitors
- ✦ School Safety Patrol Program

- ✦ Student Announcers

Competitions

- ✦ Kiwanis Festival:
Steel Pan

Curricular Enhancement

- ✦ Book Bags
- ✦ Borrow a Book Program
- ✦ Developmental Reading Assessment
- ✦ Family Literacy Night
- ✦ Family Math Night
- ✦ Scientists in the School

Community, Culture and Caring

Community - Mentoring

- ✦ Community Based:
Toronto Police Services - School Liaison Officer

Information about the success of our programs comes from a wide variety of student assessments. These assessments are based on clear expectations for all learners, consistent with those described in *The Ontario Curriculum*.

The primary purpose of student assessment is to improve learning. Assessment has the greatest potential to improve learning when it is an integral part of classroom activities. Teachers assess student progress towards achieving the expectations on an ongoing basis by using strategies such as projects, class presentations, homework assignments, classroom observations, portfolios of student work, and tests.

Schools use assessment information and information from other sources to make informed decisions for school improvement planning. Schools identify areas of strength as well as areas that require improvement. Input is obtained from a variety of sources such as student assessments, teacher feedback, parent feedback, and community surveys. In this way, schools monitor, celebrate and improve their efforts in providing a supportive and challenging learning environment for all their students.

WHAT OUR SCHOOL IS PLANNING FOR THIS YEAR

Emphasis remains on regular curriculum initiatives and maintaining a balance between arts, sports and academic subject areas. Our priorities include:

MATHEMATICS

- ✦ manipulatives in Math and Science programs (structured activities will be used at all grade levels)
- ✦ instruction in the use of the language of mathematics
- ✦ problem-solving activities
- ✦ use of Math manipulatives to re-inforce and support lateral and higher order thinking skills

READING

Continued emphasis through various programs which focus on Balanced and Integrated Literacy:

- ✦ First Steps (Gr. 1-6)
- ✦ 100 Read Aloud Book Club (library program)
- ✦ Silver Birch Book Programme
- ✦ Book Buddies and shared reading

WRITING

- ✦ Writing programs (resources: Calkins gr. 1-3, Fletcher gr. 4-6)
- ✦ First Steps Writing program
- ✦ Poetry and short story contests
- ✦ Writers in Electronic Residence program
- ✦ Bookmaking - publishing (computer generated)
- ✦ Script writing transferred to film

SOCIAL STUDIES

- ✦ A close look at Canada - past, present, and future in terms of community, geography, and government
- ✦ Guest speakers from the greater community
- ✦ Expansion of resource materials
- ✦ Toronto Urban Studies Centre programs

SCIENCE

- ✦ Extensive use of licenced science C.D.'s

- ✦ On-line exploration of various science-related sites
- ✦ Expansion of resource materials
- ✦ Science Fair (spring)
- ✦ Mad Science extracurricular activities
- ✦ Scientists in the Classroom

ARTS

- ✦ Fall Festival
- ✦ Musical productions involving choirs, steel pan bands, and strings
- ✦ Concerts and productions
- ✦ Environmental sculptures

OUR COMMUNITY PARTNERS

Parent And Community Involvement

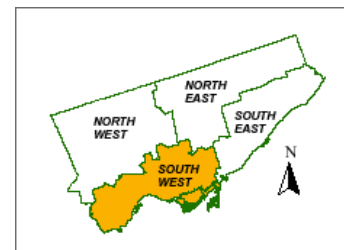
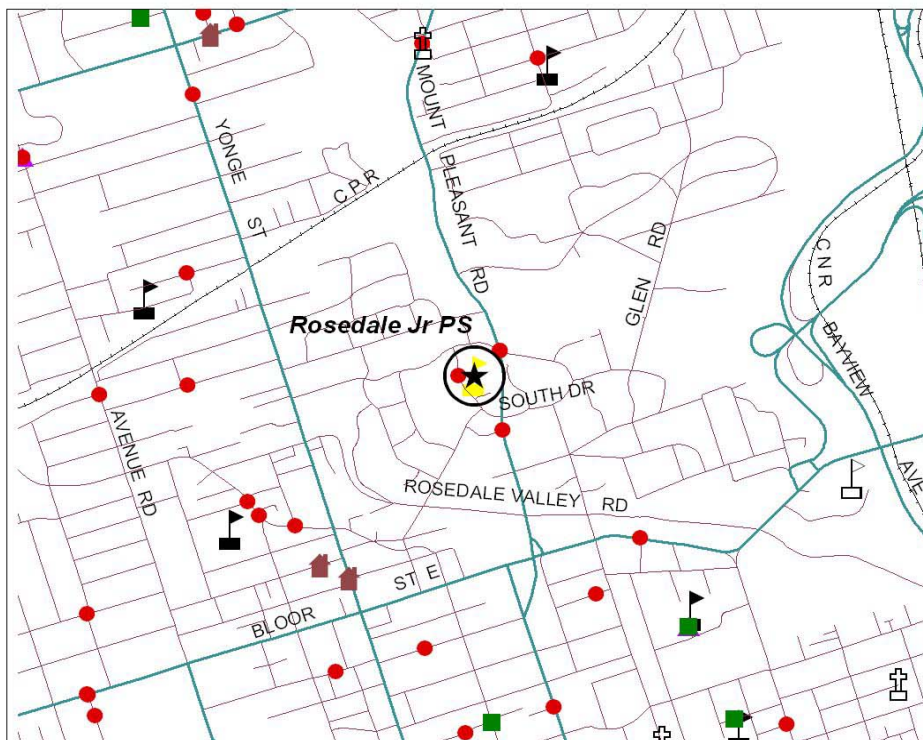
Parent Involvement:

- ✦ High parent involvement at Rosedale Public School through Friends of Rosedale
- ✦ Active and supportive School Community Council
- ✦ Parent volunteers involved in class support, environment committee, field trips, coaching, library, computers, and other activities
- ✦ Committees: safety, yearbook, graduation, library
- ✦ Enrichment lunch programs
- ✦ Intergenerational programs - seniors and students
- ✦ Book Fairs
- ✦ School community events- Family Math Night, Literacy Night, BBQ's, pizza lunches, fundraisig events

Community Links:

- ✦ Intergenerational connections (Senior citizens and Grade 1-2 students)
- ✦ Several community volunteers who assist in a variety of projects
- ✦ In school Day Care "Circle" directed by Gloria Samuel
- ✦ Close relationship with Mooredale House/Community Centre
- ✦ Working relationship with Prologue for the Performing Arts, Soulepper Theater, TSO etc

OUR NEIGHBOURHOOD



- ★ OUR SCHOOL
- ▣ TDSB Elementary School
- ▣ TDSB Secondary School
- ⊕ Separate School
- Daycare/Nursery School
- Family Resource/ Parenting Centre
- ▲ Community/ Recreation Centre
- 🏠 Public Library

0 0.5 1 Kilometers

Notes: The map shows the locations of local schools, community and social service facilities. For more information about these locations please contact the school. Sources: TDSB - Academic Accountability, Facility Services; City of Toronto - Children's Services, Toronto Land Information Services.