

School Address

211 Cameron Avenue
Toronto, M2N1E8
Tel: (416) 395-2140
Fax: (416) 395-2142

Principal

Andrew Lubczynski

Administrative Office Staff

Elaine Moore

*

School Council Chair(s)

Lauren Hendrickson

*

Ward 12 Trustee

Mari Rutka
(416) 395-8411

Superintendent

Sue Pfeffer
(416) 396-9172

Director of Education

Chris Spence

OUR SCHOOL

Cameron Public School is located in the close-knit community west of Yonge Street and south of Sheppard Avenue. The geographic catchment area of the school has been expanded to include five buildings on Yonge and Beecroft.

The school first opened in 1949 and was expanded in 1953, 1954, 1968 and 1986 to include a gymnasium and additional classroom space. A new computer lab was added in 2005.

- ✦ The school serves approximately 246 students, representing over 20 language groups. About 16% of the students speak Russian with 35% of the total student population speaking English as a second language.
- ✦ Glen Cameron For Kids Daycare is housed in the building and works in close partnership with the school community. (Tel: 416-225-5788)
- ✦ Cameron is a barrier-free school that facilitates the inclusion of physically challenged students in regular classrooms.

School Focus For This School Year

- ✦ improving Non-Fiction Writing (e.g. Procedure writing, Report Writing)
- ✦ increasing awareness of student gender differences and student attitudes toward writing
- ✦ encouraging parents to read to students at home and to listen to their reading
- ✦ building on the foundations for literacy laid in the Primary Division into the Junior Division (Grades 4 + 5) by developing a balanced literacy program that prepares students for higher learning and growing independence
- ✦ incorporating literacy instruction into the content areas in the Junior Division to provide more time for direct reading and writing instruction
- ✦ helping teachers increase their knowledge through in-services and colleague mentoring
- ✦ implementing current research on the most effective ways to teach
- ✦ using consistent methods of assessment to improve programming for students
- ✦ integrating information technology into classroom programming
- ✦ providing for increased opportunities for physical activity throughout the school

OUR STUDENTS (As of spring 2008)

	<u>No.</u>	<u>Percent</u>
✦ Total number of students:	248	
Junior Kindergarten - Grade 3	184	
Grade 4 - Grade 5	64	
✦ Gender:		
Female	109	44%
Male	139	56%
✦ Primary language other than English:	81	33%*
✦ Students born outside of Canada:		
Students living in Canada for 2 years or less	15	6%
Students living in Canada for 3 - 5 years	23	9%

* Calculation does not include students for whom language information is missing.

THE SCHOOL BOARD PROVIDES:

The Toronto District School Board (TDSB), in partnership with students, parents, teachers and all our communities, is committed to taking responsibility for continuous improvement of schools. This is achieved through:

- ✦ **Relevant Curriculum**
- ✦ **Equity**
- ✦ **Accountability**

Regular Instructional Programs

- ✦ Languages - English, English as a Second Language, and French
- ✦ Mathematics, Science and Technology
- ✦ Arts - Music, Visual Arts, Drama and Dance
- ✦ Social Studies, Health and Physical Education

Special Education Programs

A variety of special education programs and services are offered to meet the needs of all students, including students with exceptionalities, such as behavioural, communication, intellectual, physical and multiple learning disabilities. Students' exceptionalities are identified through a formal review process undertaken by an Identification, Placement and Review Committee (IPRC).

OUR SCHOOL ALSO OFFERS:

Co-Curricular

Arts Programs

- ✦ Dance:
Concert & Performances
- ✦ Dramatic Arts:
Live Production/Play
- ✦ Integrated Programs:
Learning through the Arts
- ✦ Music:
Choir, Choral Project, Excursions, Music Concerts / Performances
- ✦ Visiting Artists:
Dance, Drama, Music, Prologue to the Performing Arts
- ✦ Visual Arts:
Excursions, Visual Arts Workshops

Intramurals

- ✦ Basketball
- ✦ Dodgeball
- ✦ House League
- ✦ Volleyball

Athletic Teams

- ✦ Cross Country
- ✦ Dance Club
- ✦ Skating
- ✦ Slo-Pitch
- ✦ Track and Field

Clubs

- ✦ Arts and Crafts
- ✦ Boy's Reading
- ✦ Gardening
- ✦ Silver Birch Book Club
- ✦ Skipping Club

Leadership

- ✦ Lunch Monitors
- ✦ Office Helpers
- ✦ P.A.L.S. Playground Activity Leaders in Schools
- ✦ Student Announcers

Competitions

- ✦ Speech Arts

Curricular Enhancement

- ✦ Daily Independent Reading
- ✦ Toronto Schools on the Move

Community, Culture and Caring

Community - Mentoring

- ✦ Community Based:
Big Brothers/Big Sisters - In School Mentoring Program, Toronto Police Services - School Liaison Officer

Culture/Caring

- ✦ Caring:
Food Drives, Free The Children
- ✦ Fundraisers:
Book Fair, Dance-A-Thon, Entertainment Book, Jump Rope for Heart, Pizza Days, Terry Fox Run
- ✦ Nutrition Programs:
Lunch Program, Milk Program, Pizza Lunches
- ✦ Safe & Caring Schools:
BRASS Program
- ✦ Social Skills:
Character Development Program, Roots of Empathy

Equity

- ✦ Assemblies

Specializations and Other Programs

Special Education Programs

- ✦ LD - Learning Disability
- ✦ MID/Behaviour

Programs and Services

THE SCHOOL BOARD PROVIDES:



Information about the success of our programs comes from a wide variety of student assessments. These assessments are based on clear expectations for all learners, consistent with those described in *The Ontario Curriculum*.

The primary purpose of student assessment is to improve learning. Assessment has the greatest potential to improve learning when it is an integral part of classroom activities. Teachers assess student progress towards achieving the expectations on an ongoing basis by using strategies such as projects, class presentations, homework assignments, classroom observations, portfolios of student work, and tests.

Schools use assessment information and information from other sources to make informed decisions for school improvement planning. Schools identify areas of strength as well as areas that require improvement. Input is obtained from a variety of sources such as student assessments, teacher feedback, parent feedback, and community surveys. In this way, schools monitor, celebrate and improve their efforts in providing a supportive and challenging learning environment for all their students.

WHAT OUR SCHOOL IS PLANNING FOR THIS YEAR

Literacy

- ♦ improve non-fiction writing (e.g. Procedure Writing, Report Writing)
- ♦ increase our awareness of student gender differences and their attitudes towards writing
- ♦ to provide students with additional opportunities to produce writing on the computer
- ♦ update and add to literacy resources
- ♦ hold in-school staff development and team planning sessions to develop programming, teaching and assessment techniques
- ♦ use team based planning to integrate literacy instruction in the junior grades into other content areas and to focus on critical literacy
- ♦ provide support from resource teachers to meet student needs
- ♦ promote school-wide literacy during Family Literacy Week
- ♦ celebrate students' best writing with parents and community during Young Authors' Day
- ♦ use mentoring methods such as Student Learning Buddies, volunteer reading assistants

Science and Technology

- ♦ provide hands-on science experiences, Junior Kindergarten to Grade 5
- ♦ host "Scientists in the School" program
- ♦ organize field trips based on curriculum expectations to provide real world connections
- ♦ expand library resources to support science
- ♦ maintain a central math and science resource room for equipment and materials

Assessment

- ♦ provide in-school support, modeling, staff development and planning sessions to develop programming, teaching and assessment techniques
- ♦ link data from formal and informal assessments to guide instruction
- ♦ help parents and students develop a better understanding of expectations and achievement levels by using scoring scales and exemplars of student work during lessons and parent-teacher conferences

Life Skills

- ♦ create a positive, safe and inclusive teaching and learning environment
- ♦ promote self-esteem through student recognition and celebration of achievement (Newsletter, Monthly Sharing Assemblies, Character Development Programs, Young Authors' Day, Bullying Awareness Week, Anti-Bullying Pledge)
- ♦ B.R.A.S.S. [Behaviour Resource and Support Services] Program
- ♦ provide social skills groups and counselling by working with various agencies / services
- ♦ to increase opportunities for extra-curricular activities
- ♦ Roots of Empathy Program

Mathematics

- ♦ encourage parents to share math and problem-solving situations with their children as they occur in everyday life
- ♦ Family Math Night
- ♦ maintain a central math resource room for mathematics documents and manipulatives
- ♦ use mathematics resource materials to encourage students to discuss, discover, record and explain their thinking

Physical Education

- ♦ increase opportunities for physical activity
- ♦ increase physical fitness of students
- ♦ improve student attitude and comfort levels in physical education
- ♦ increase lunch and recess intramurals by providing more variety and frequency of activities
- ♦ train Grade 5 students as QDPA (Quality Daily Physical Activity) leaders and referees for DPA (Daily Physical Activity) and intramurals
- ♦ provide activity bins/bags for each classroom
- ♦ provide teacher professional development through TSM (Toronto Schools on the Move)
- ♦ bring in professionals and community members as resources (e.g. Yoga Instructor)
- ♦ QDPA and student achievement bulletin board and athletic prize packages

OUR COMMUNITY PARTNERS

Parent And Community Involvement

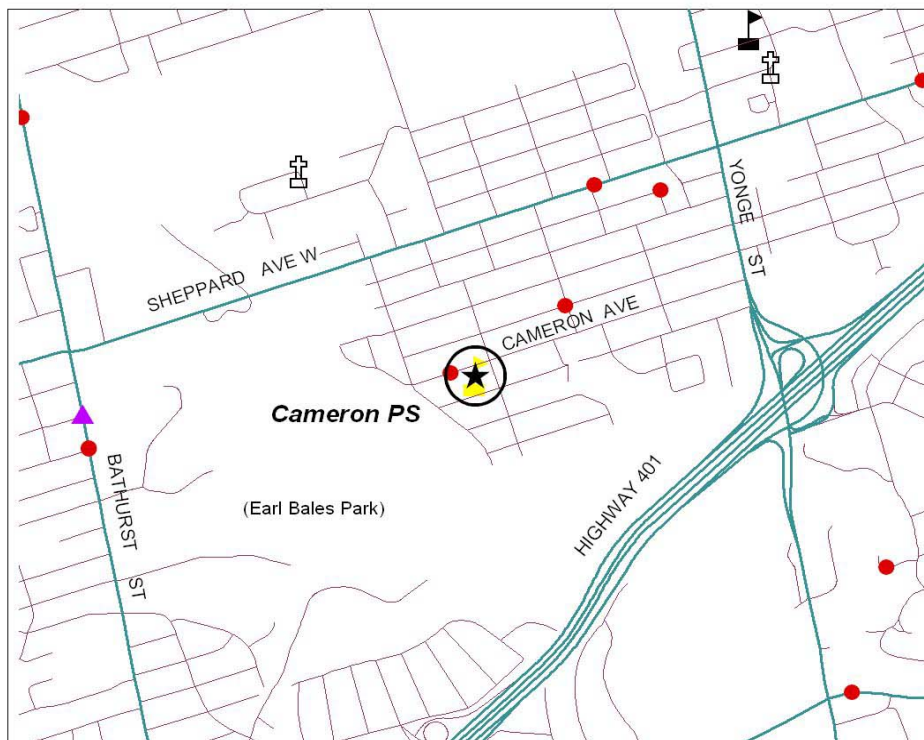
Parent Involvement:

- ✦ School Council
- ✦ Dedicated parent and community volunteers
- ✦ A variety of spirit raising and fundraising events including the Annual Spring Fair, Winter Bazaar, Cupcake Sales, Staff Appreciation Lunch and Volunteer Appreciation Tea, Community Appreciation Pancake Breakfast
- ✦ Family Math Night for parents and children to see what students are learning in mathematics, demonstrate links between mathematics and 'real life' and learn strategies supporting children in their mathematics studies at home

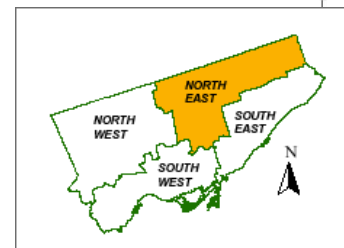
Community Links:

- ✦ Committed community volunteers who assist with classroom programs
- ✦ Collaboration with community and social agencies
- ✦ Student teachers from a variety of Teacher Training programs

OUR NEIGHBOURHOOD



0 0.5 1 Kilometers



- ★ OUR SCHOOL
- 🏫 TDSB Elementary School
- 🏫 TDSB Junior High School
- 🏫 TDSB Secondary School
- 🏫 Separate School
- Daycare/Nursery School
- Family Resource/ Parenting Centre
- ▲ Community/ Recreation Centre
- 📖 Public Library

Notes: The map shows the locations of local schools, community and social service facilities. For more information about these locations please contact the school. Sources: TDSB - Academic Accountability, Facility Services; City of Toronto - Children's Services, Toronto Land Information Services.