

Eglinton Jr PS, Hodgson MS, and Northlea E & MS Boundary Change Review

Public Meeting

May 23, 2019

More information about the Eglinton Jr PS, Hodgson MS, and Northlea E & MS Boundary Change Review is available on the TDSB public web site at www.tdsb.on.ca. Click on **Accommodation Reviews** at the bottom of the page.



Agenda

7:00 p.m. to 8:30 p.m.

1.	Land Acknowledgement and Welcome
2.	Setting the Context
3.	Overview of Enrolment and School Utilization
4.	Presentation of Boundary Change Option
5.	Discussion
6.	Next Steps
7.	Adjournment

Setting the Context: why are we here?

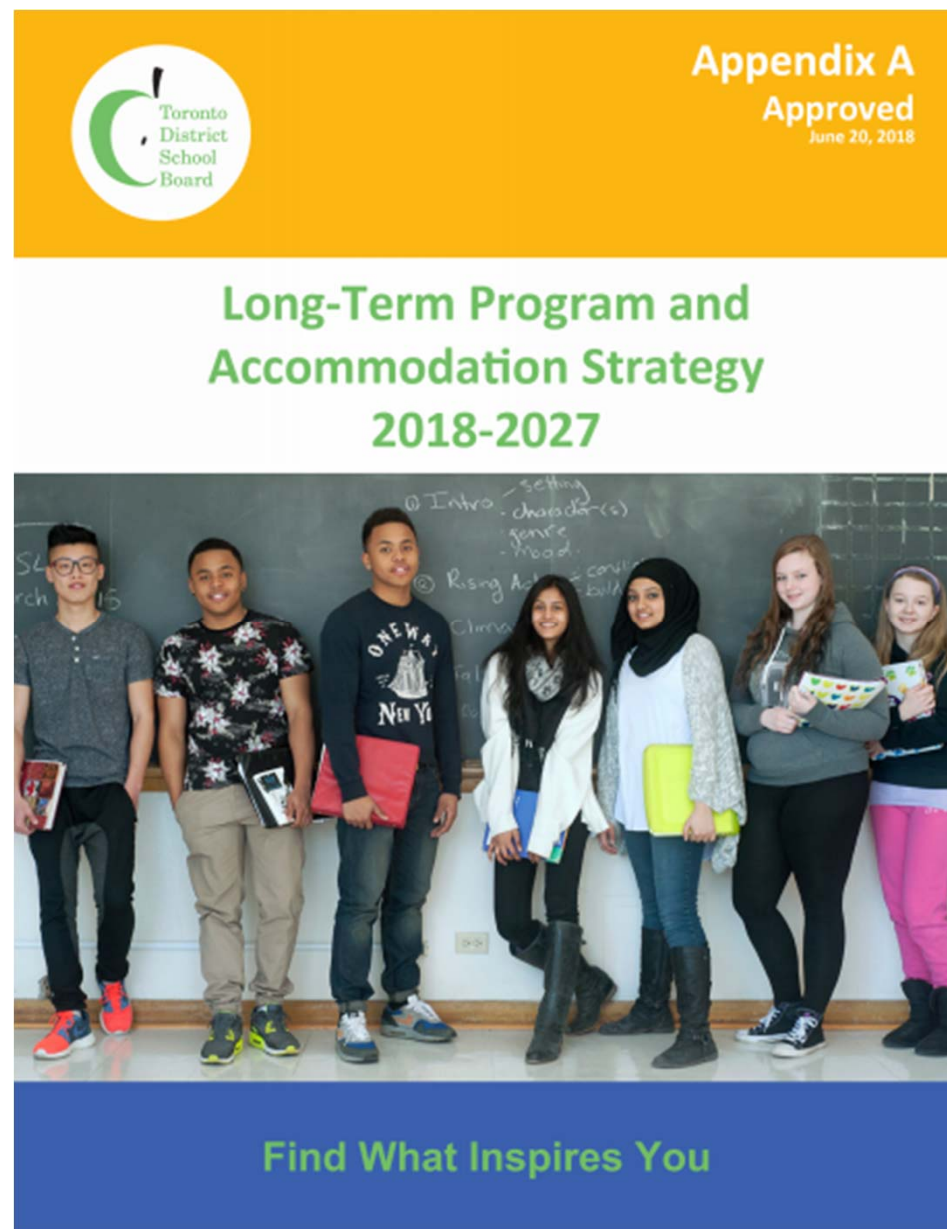
- Development activity has been accelerating in the Yonge-Eglinton area over the past five years.
- There continues to be significant accommodation pressures at local elementary schools, particularly at Eglinton Jr PS.
- The proposed boundary change would redirect approximately 30-40 students away from Eglinton Jr PS and Hodgson MS to Northlea E & MS. This would help provide a short-term solution to the accommodation issues at both schools.
- It is acknowledged that the boundary change does not solve the overcapacity issue at Eglinton Jr PS. Phase 2 of the Yonge-Eglinton review will resume in the fall of 2019 to consider longer-term solutions to address growth in this area.

Completed Accommodation Studies for TDSB Schools in the Yonge-Eglinton Area

2009-10	<ul style="list-style-type: none">• Pupil Accommodation Review: Davisville Jr PS, Eglinton Jr PS, Hodgson Sr PS, Maurice Cody Jr PS, Spectrum Alternative Sr School• Spectrum Alternative Senior School was relocated from Eglinton Jr PS to Davisville Jr PS• Internal renovations to create an additional kindergarten room at Eglinton Jr PS• Internal addition at Maurice Cody Jr PS
2013-15	<ul style="list-style-type: none">• Relocation of Toronto Lands Corporation offices from Davisville Jr PS (2013)• Relocation of the Deaf & Hard of Hearing program from Davisville Jr PS into Faywood ABC School (2014)• Creation of new Extended French program at Forest Hill Jr & Sr PS (2015)
2015-16	<ul style="list-style-type: none">• Program Area Review: Davisville Jr PS, Eglinton Jr PS, Forest Hill Jr & Sr PS, Hodgson Sr PS, Maurice Cody Jr PS, Oriole Park Jr & Sr PS, Spectrum Alternative Sr School• Grade changes at Davisville Jr PS (English track only), Eglinton Jr PS, Maurice Cody Jr PS, Oriole Park Jr PS (all became JK to Grade 5 schools) and Hodgson Sr PS (became a Grades 6-8 school)• Boundary change between Eglinton Jr PS/Hodgson Sr PS and Northlea E & MS• Capital funding secured from Ministry of Education to construct new, larger facility for Davisville Jr PS/Spectrum Alternative Sr School, as well as a large addition at Hodgson MS.
2017-18	<ul style="list-style-type: none">• Boundary change between Maurice Cody Jr PS and Eglinton Jr PS• Redirection of nine new residential developments from Eglinton Jr PS to Whitney Jr PS

TDSB's Long-Term Program and Accommodation Strategy

- Outlines guiding principles and studies to address accommodation issues and program priorities across the system within ten-year timeframe.
- First approved in 2014 and is updated annually. The latest version was approved in June 2018.
- Allows for responsiveness and flexibility in a changing environment by including an annual cycle of review.
- Includes a work plan for the upcoming school year (Annual Planning Document).



Current studies in the LTPAS

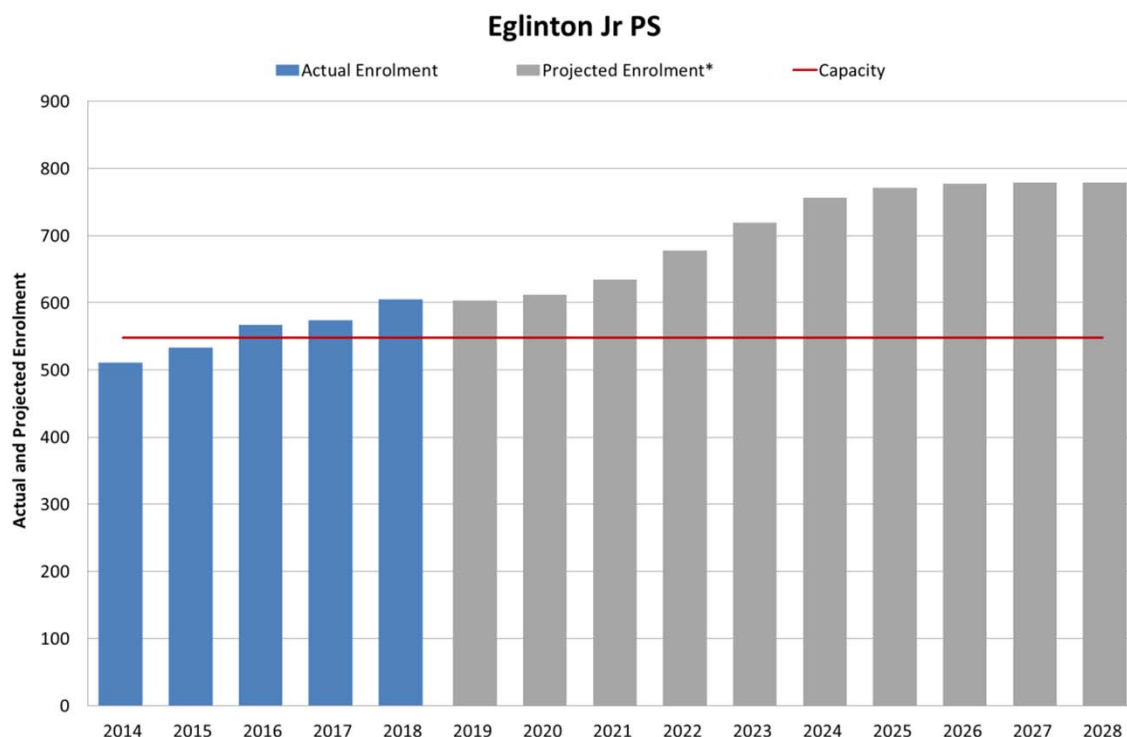
- New Program Study: Continue with the second phase of the Yonge-Eglinton PART as a means to address continued projected enrolment growth and accommodation pressure at local elementary schools in the area (Wards 8, 11, and 13). This review should determine the future program to be delivered within the Bannockburn building. This study will reflect the long-term need to identify further opportunities for additional school capacity in the Yonge-Eglinton community. This review will also include an exploration of the space occupied by the child care centre at Eglinton Jr PS.

The provision of a new elementary school will be sought through the exploration and pursuit of innovative partnerships with the City of Toronto and the development community to ensure that the long-term accommodation requirements of the community are addressed. This will require a long-term capital funding solution and the acquisition of a site and/or strata ownership to ensure that the ability to accommodate long-term enrolment growth is secured.

- Program Relocation Study: Explore the relocation of the existing Extended French program operating at Eglinton Jr PS (4-5) and Hodgson MS (6-8).

Eglinton Jr PS, Hodgson MS, and Northlea E & MS Boundary Change Review

Current Situation – Eglinton Jr PS



Eglinton Jr PS

JK-Grade 5 (English track)
Grade 4-5 (Extended French)

Site Size: 1.61 acres

Current School Capacity: 548

2018/19 Enrolment: 605

Current Building Utilization: 110%

2018/19 Optional Attendance Status: Closed (English)/Closed (Extended French)

Existing Permanent Classroom Spaces: 28

Other Users: Central Eglinton Children's Centre (4 classrooms)

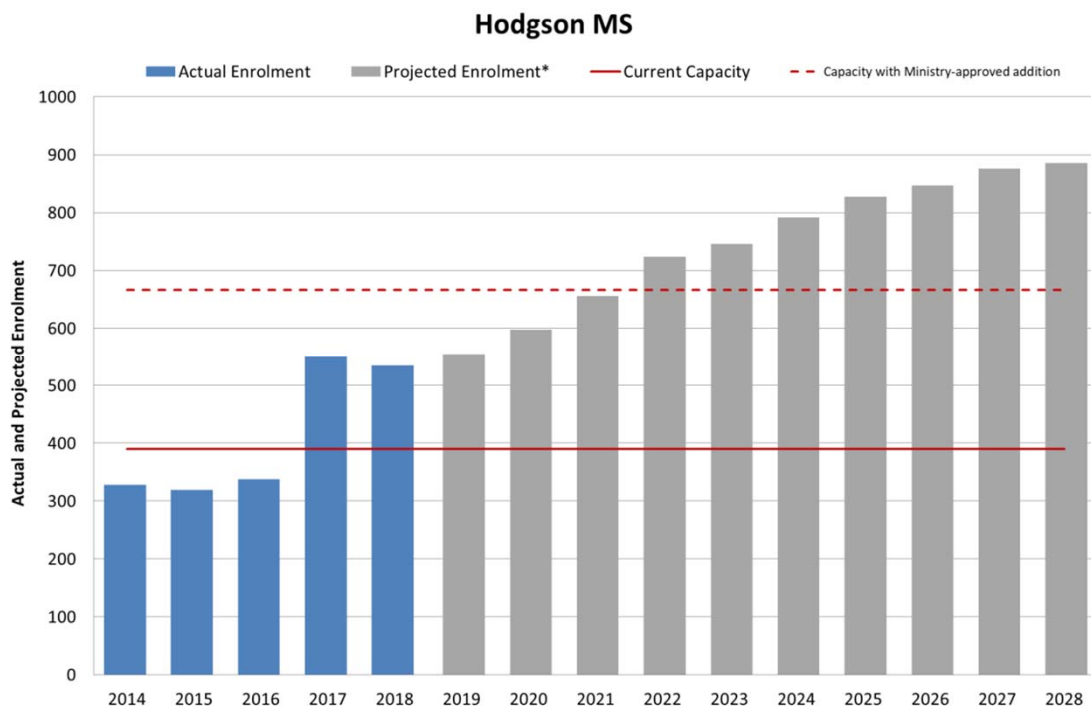
Portables cannot be accommodated on-site.
25 active residential development applications in the catchment (excl. 9 that have been directed to Whitney Jr PS).

	2019	2020	2021	2022	2023	2024	2025	2026	2027	2028
Enrolment	603	612	634	678	719	756	771	777	779	779
Utilization	110%	112%	116%	124%	131%	138%	141%	142%	142%	142%
Classroom Surplus/ Deficit	-5	-6	-6	-8	-9	-11	-12	-12	-12	-12

*These are preliminary projected enrolments as 2019/20 long-term projections have not been finalized yet.

Eglinton Jr PS, Hodgson MS, and Northlea E & MS Boundary Change Review

Current Situation – Hodgson MS



Hodgson MS

Grade 6-8 (English track)
Grade 6-8 (Extended French)

Site Size: 4.18 acres

Current School Capacity: 390

2018/19 Enrolment (Week 4): 534

Current Building Utilization: 137%

2018/19 Optional Attendance Status: Closed (English)/Closed (Extended French)

Existing Permanent Classroom Spaces: 17

	2019	2020	2021	2022	2023	2024	2025	2026	2027	2028
Enrolment	571	603	662	724	746	791	827	847	876	885
Utilization	146%	155%	170%	186%	112%	119%	124%	127%	132%	133%
Classroom Surplus/ Deficit**	-5	-7	-10	-13	+1	-1	-2	-3	-4	-4

*These are preliminary projected enrolments as 2019/20 long-term projections have not been finalized yet.

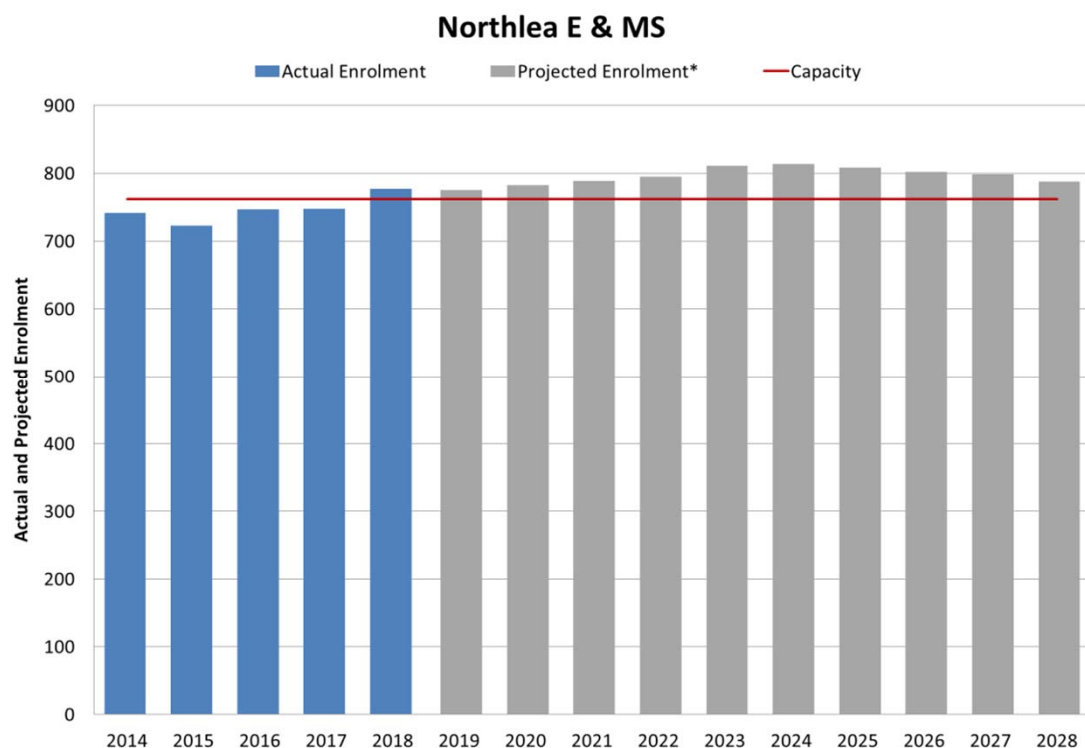
**Room counts and capacity reflect completion of the Ministry-approved 12-room addition by 2023. Capacity is adjusted to 666.

***If approved, construction of the larger addition could require the demolition and reconstruction of 2 existing classrooms between 2021 and 2022 (assuming construction begins in September 2021).

Classroom deficit in 2021 and 2022 assumes this need for two additional classrooms.

Eglinton Jr PS, Hodgson MS, and Northlea E & MS Boundary Change Review

Current Situation – Northlea E & MS



Northlea E & MS

JK-Grade 8 (English track)

SK-Grade 8 (French Immersion)

Site Size: 4.6 acres

Current School Capacity: 777

2018/19 Enrolment (Week 4): 773

Current Building Utilization: 102%

2018/19 Optional Attendance Status: Closed (English)/Closed (French Immersion)

Existing Permanent Classroom Spaces: 37

Programs: DD (2 classrooms + 1 sensory classroom)

Other Users: Northlea Community Child Care Centre (2 classrooms)

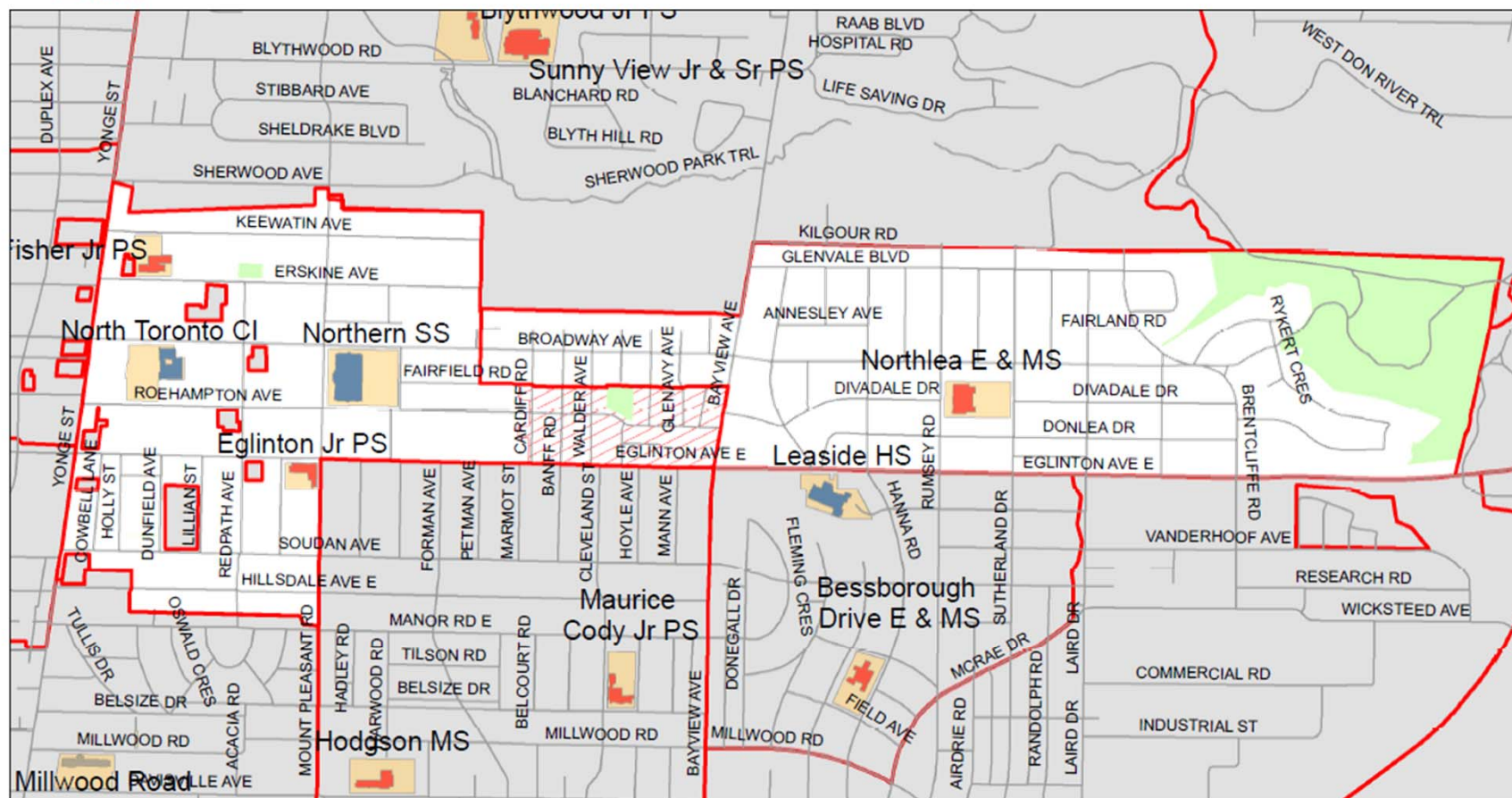
	2019	2020	2021	2022	2023	2024	2025	2026	2027	2028
Enrolment	775	782	789	795	811	814	808	802	798	788
Utilization	102%	103%	104%	104%	106%	107%	106%	105%	105%	103%
Classroom Surplus/ Deficit	0	-1	-1	-1	-2	-2	-2	-2	-2	-1

*These are preliminary projected enrolments as 2019/20 projections have not been finalized yet.

Eglinton Jr PS, Hodgson MS, and Northlea E & MS Boundary Change Review



Eglinton Junior Public School and Northlea Elementary & Middle School Proposed Boundary Change Area



Legend:

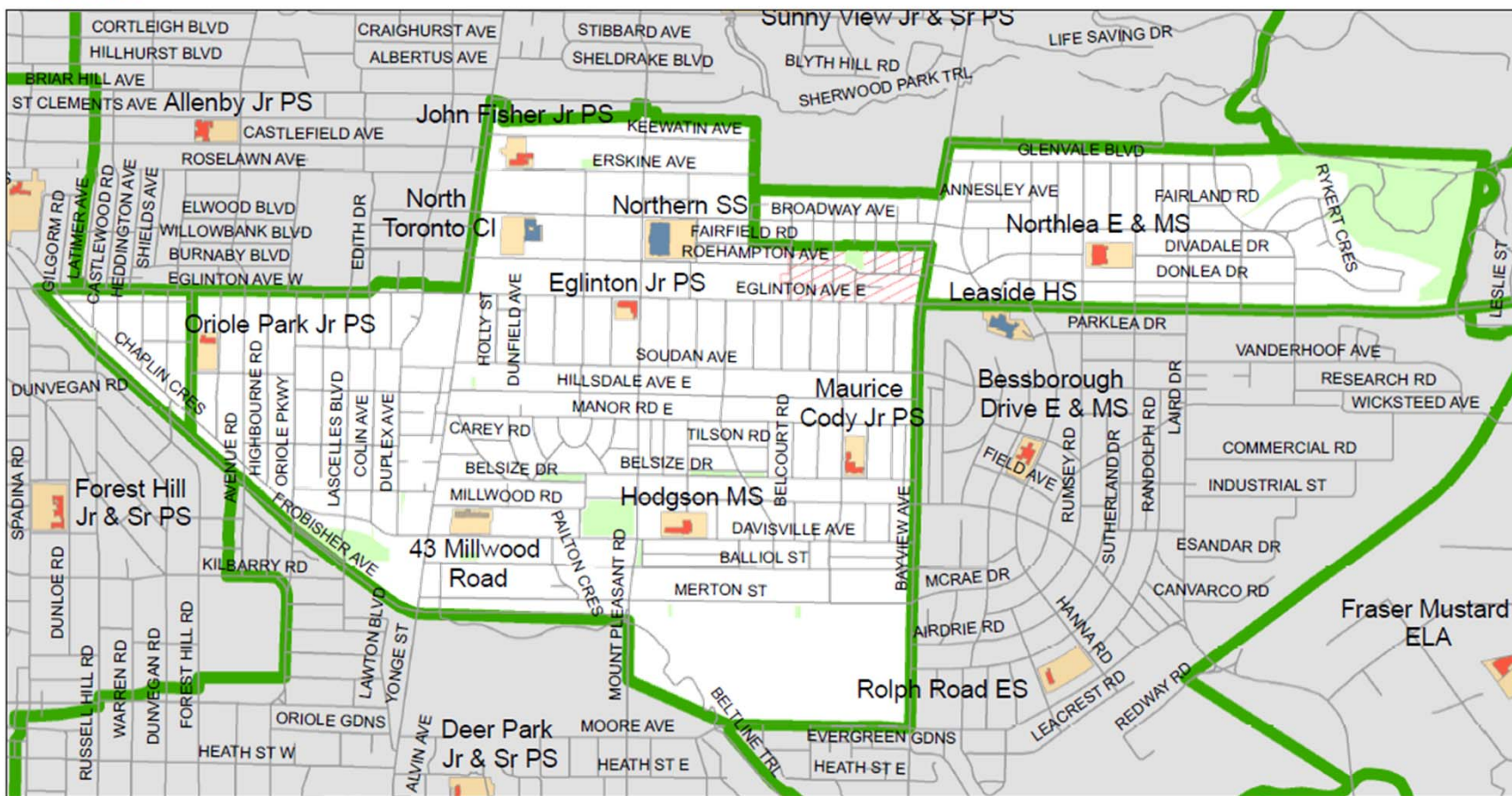
- Elementary School
- Secondary School
- Site
- Junior Attendance Area
- Proposed Junior Boundary Change Area

Please note:
The lines on this map representing the Attendance Areas are approximate. For specific information on designated schools to serve individual addresses, please consult the TDSB Street Guide.


0 0.175 0.35 0.7 1.05
Kilometers

Produced by:
Planning Division, TDSB
May 2019
Source:
Base Map- Geospatial Competency Centre
Facility - Planning Division, TDSB
Data- City of Toronto

Eglinton Jr PS, Hodgson MS, and Northlea E & MS Boundary Change Review



Legend:

-  Elementary School
 Secondary School
 Site
-  Intermediate Attendance Area
 Proposed Intermediate Boundary Change Area

Please note:
The lines on this map representing the Attendance Areas are approximate. For specific information on designated schools to serve individual addresses, please consult the TDSB Street Guide.



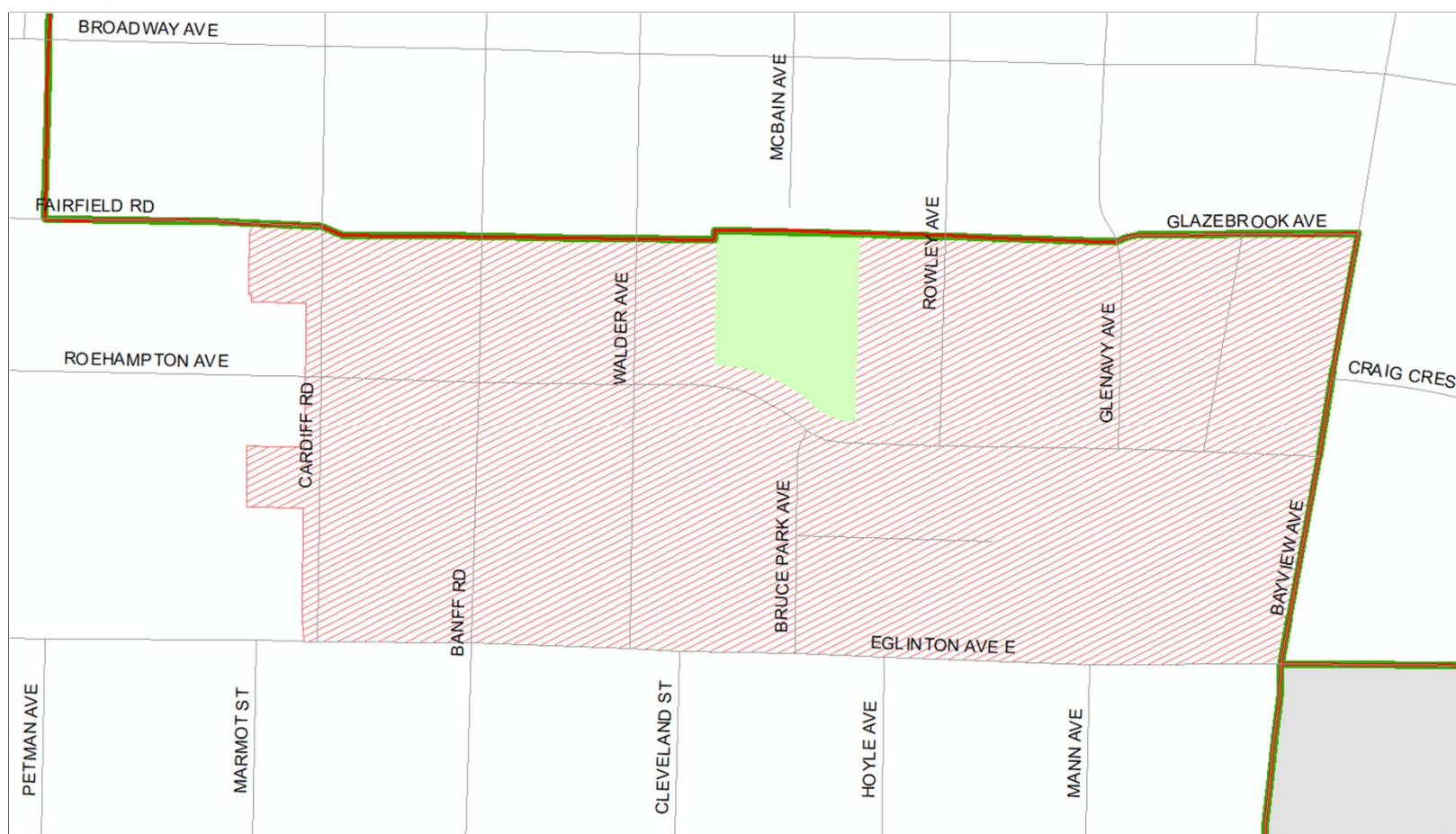
Produced by:
Planning Division, TDSB
May 2019
Source:
Base Map- Geospatial Competency Centre
Facility - Planning Division, TDSB
Data- City of Toronto



Eglinton Jr PS, Hodgson MS, and Northlea E & MS Boundary Change Review

Students Residing within Proposed Boundary Change Area who Attend Eglinton Jr PS/Hodgson MS (Reg+HSP), 2014-2018

	JK	SK	Grade 1	Grade 2	Grade 3	Grade 4	Grade 5	Grade 6	Grade 7	Grade 8	Total
2014	5	3	3	3	1	1	0	1	0	5	22
2015	2	5	3	2	2	0	1	0	0	0	15
2016	3	1	5	2	3	1	1	2	3	0	21
2017	3	3	3	6	3	2	2	0	2	5	29
2018	6	2	3	3	7	3	1	2	0	2	29



Eglinton Jr PS

Status Quo

	2019	2020	2021	2022	2023	2024	2025	2026	2027	2028
Enrolment	603	612	634	678	719	756	771	777	779	779
Utilization	110%	112%	116%	124%	131%	138%	141%	142%	142%	142%
Classroom Surplus/ Deficit	-5	-6	-6	-8	-9	-11	-12	-12	-12	-12

LFT Recommended Scenario

	2019	2020	2021	2022	2023	2024	2025	2026	2027	2028
Enrolment	591	597	618	658	696	731	743	748	749	751
Utilization	108%	109%	113%	120%	127%	133%	136%	137%	137%	137%
Classroom Surplus/ Deficit	-5	-5	-6	-8	-8	-10	-11	-11	-11	-11

*These are preliminary projected enrolments as 2019/20 long-term projections have not been finalized yet.

Hodgson MS

Status Quo

	2019	2020	2021	2022	2023	2024	2025	2026	2027	2028
Enrolment*	571	603	662	724	746	791	827	847	876	885
Utilization	146%	155%	170%	186%	112%	119%	124%	127%	132%	133%
Classroom Surplus/ Deficit**, ***	-5	-7	-10	-13	+1	-1	-2	-3	-4	-4

LFT Recommended Scenario

	2019	2020	2021	2022	2023	2024	2025	2026	2027	2028
Enrolment	569	600	658	720	743	789	824	842	869	876
Utilization	146%	154%	169%	185%	112%	118%	124%	126%	130%	131%
Classroom Surplus/ Deficit**, ***	-5	-7	-10	-13	+1	-1	-2	-3	-4	-4

*These are preliminary projected enrolments as 2019/20 long-term projections have not been finalized yet.

**Room counts and capacity reflect completion of the Ministry-approved 12-room addition by 2023. Capacity is adjusted to 666.

***If approved, construction of the larger addition could require the demolition and reconstruction of 2 existing classrooms between 2021 and 2022 (assuming construction begins in September 2021). Classroom deficit in 2021 and 2022 assumes this need for two additional classrooms.

Northlea E & MS

Status Quo

	2019	2020	2021	2022	2023	2024	2025	2026	2027	2028
Enrolment*	775	782	789	795	811	814	808	802	798	788
Utilization	102%	103%	104%	104%	106%	107%	106%	105%	105%	103%
Classroom Surplus/ Deficit	0	0	-1	-1	-2	-2	-2	-2	-2	-1

LFT Recommended Scenario

	2019	2020	2021	2022	2023	2024	2025	2026	2027	2028
Enrolment	789	800	809	819	838	841	839	836	835	825
Utilization	104%	105%	106%	107%	110%	110%	110%	110%	110%	108%
Classroom Surplus/ Deficit	0	-1	-2	-3	-4	-4	-4	-4	-4	-3

*These are preliminary projected enrolments as 2019/20 long-term projections have not been finalized yet.

Implementation Details

- The proposed junior and intermediate boundary changes would be implemented effective 1 September 2020.
- For the 2019/20 school year, all JK to Grade 8 students who reside in the proposed junior and intermediate boundary change areas will have the option to register at Eglinton Jr PS, Hodgson MS, or Northlea E & MS.
- If Board of Trustees approve the boundary changes on June 19, 2019, Eglinton Jr PS and Hodgson MS English program students (pre-registered JK to Grade 7 students) will be contacted individually to determine whether they would like to attend Eglinton Jr PS, Hodgson MS, or Northlea E & MS in September 2019.
- All Eglinton Jr PS and Hodgson MS students who reside in the proposed boundary change area as of the 2019/20 school year will be allowed to remain at their respective schools until they graduate.
- All Eglinton Jr PS students who reside in the proposed boundary change area as of the 2019/20 school year be allowed to keep their current intermediate school pathway (Hodgson MS) until they graduate from Grade 8.

Next Steps

- **Committee of the Whole:** Wednesday, June 12, 2019 – 4:30pm
 - This is the opportunity for members of the public to present a deputation to Trustees. The deputation can be made in person or submitted in writing.
 - In order to depute, you must contact Governance and Board Services by 4pm on Monday, June 10, 2019.
 - Email: delegates@tdsb.on.ca
 - Phone: 416-397-3627
 - For more information, please go to:
<http://www.tdsb.on.ca/Leadership/Boardroom/Delegations>
- **Board of Trustees Meeting:** Wednesday, June 19, 2019 – 7:00pm
 - The final decision will be made by the Board of Trustees.
- **Phase 2 of the Yonge-Eglinton Program Area Review will resume in the Fall.**

Questions?

